

Monroe Township Municipal Utilities Authority

Monitoring Agreement

Purpose

Monitor export of Kirkwood Cohansey water out of the Pinelands and to address inter-basin transfer from the Atlantic Basin to the Delaware River Basin

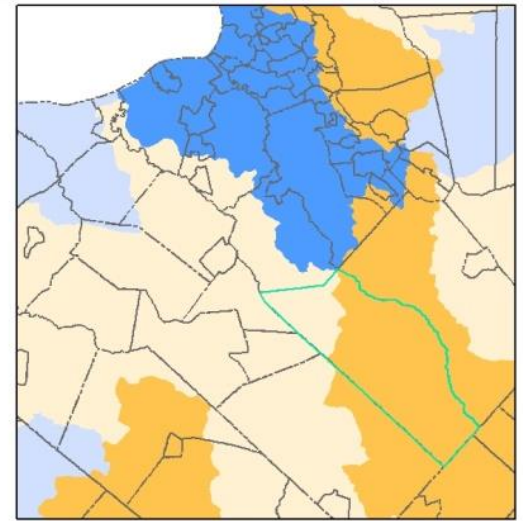
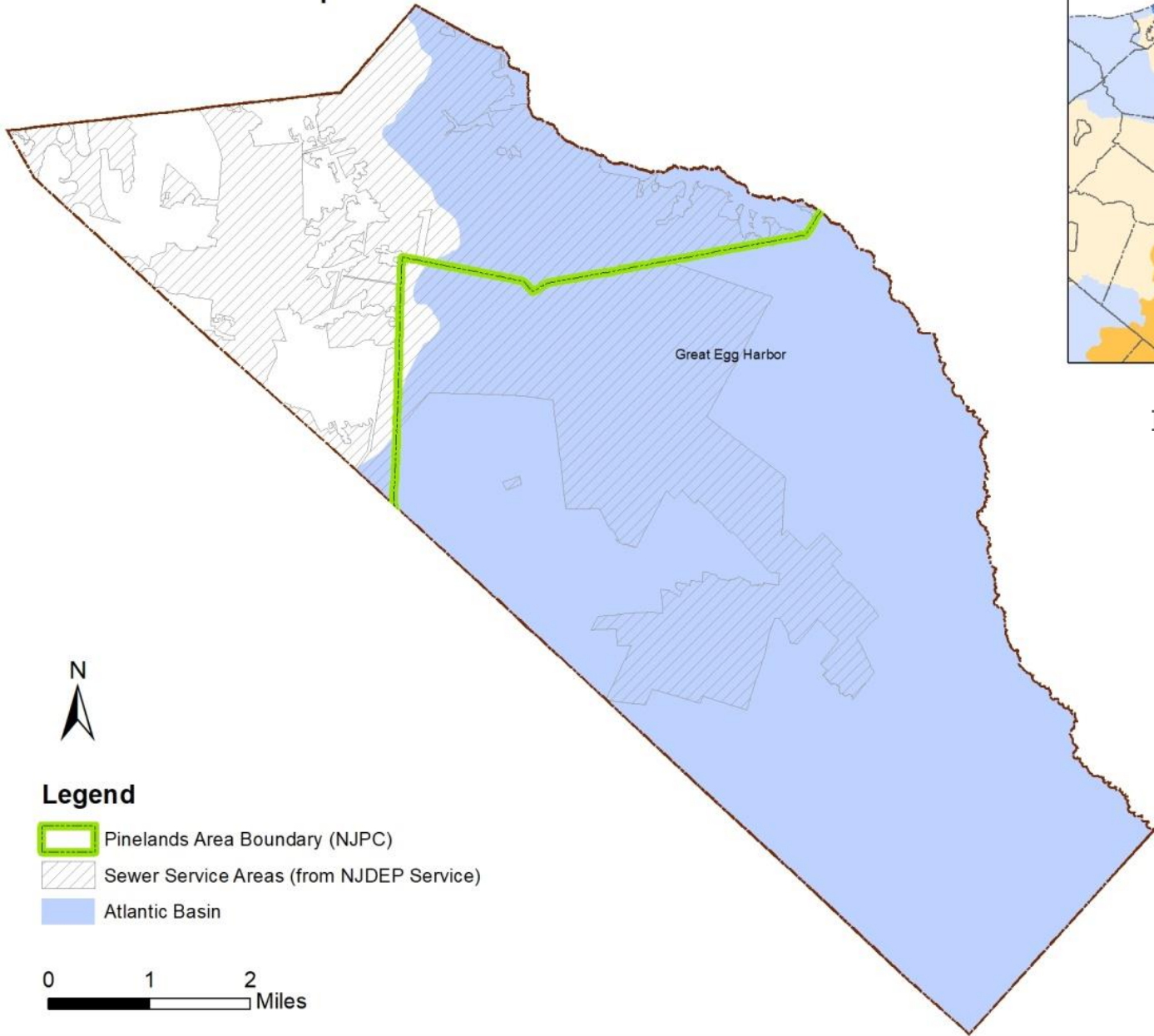
Agreement

- Sewer Service Area (WQMP) amendment generated need to review water export
- Sewers discharge to the Delaware River via the Gloucester County Utility Authority pipe
- Water supplied from public and private wells in K/C (& other sources)
- Hydrologic monitoring agreement signed in March 1990

Limits

- MTMUA is limited to discharging up to 3 MGD wastewater
- MTMUA reports sewer discharge, water use from the entire system and from the Atlantic Basin portion of the system
- Approximately 90% of that discharge is from the Atlantic Basin
- “Trigger Point” – sewer discharge of 2.4 – 2.7 MGD (2001; RAZ)




Monroe Township

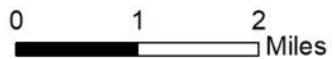


Inset: Water Supply Map

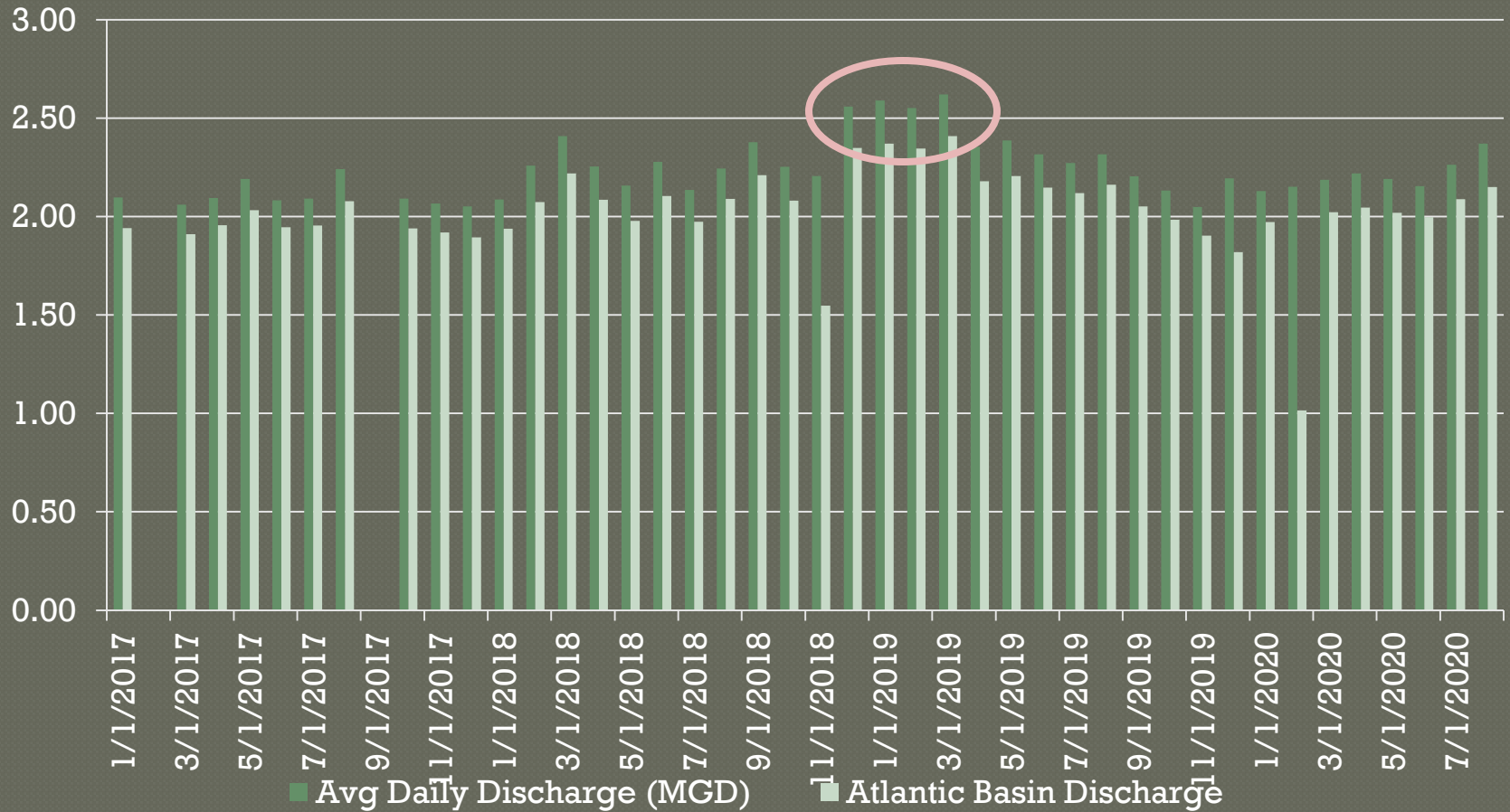


Legend

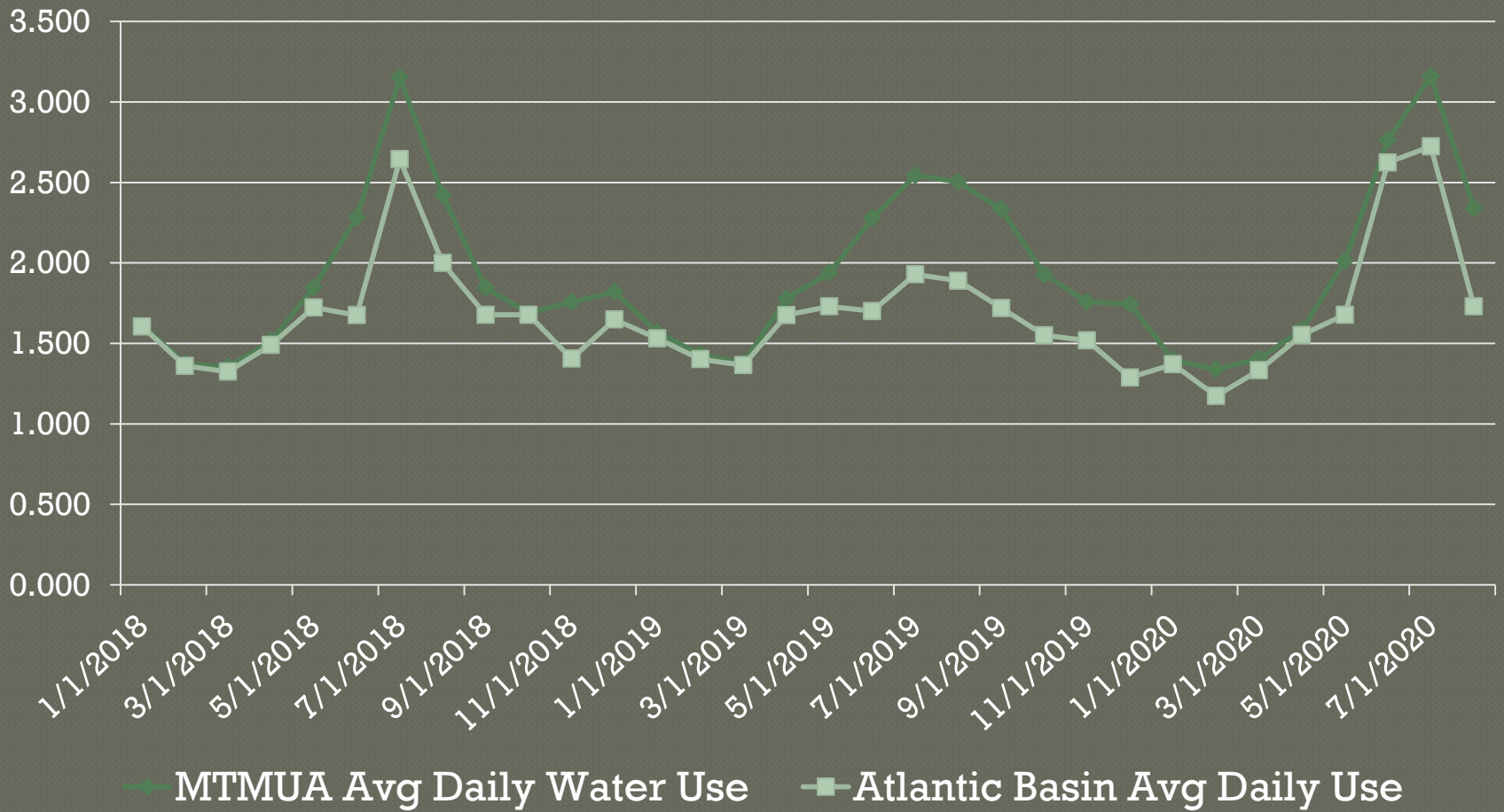
-  Pinelands Area Boundary (NJPC)
-  Sewer Service Areas (from NJDEP Service)
-  Atlantic Basin



2017 – Current Average Daily Discharge (MGD)



Average Daily Water Use (MGD)



Review and Conclusion

- Continue monitoring sewer discharge (export) not water use
- If discharge consistently greater than 2.4 – 2.7 MGD, then new stream monitoring is required
- MUA instituted a program to detect and repair infiltration and inflow (I&I) to the system in March 2019
- System is operating within parameters of agreement