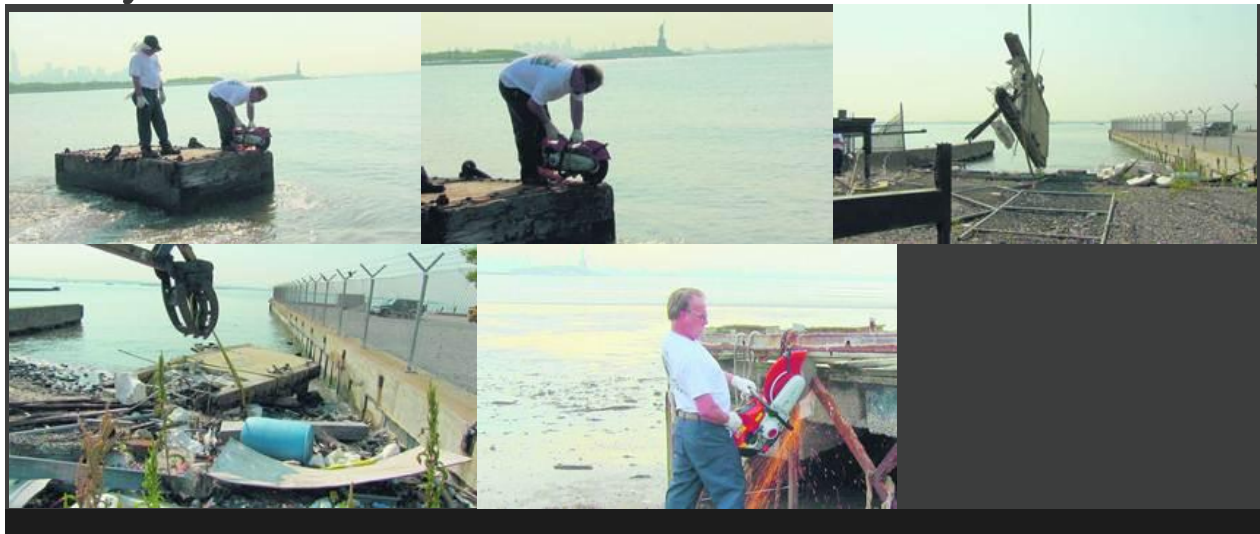


## Passaic Valley Sewerage Commission clears post-Sandy debris from Port Liberte shoreline



*The Passaic Valley Sewerage Commission clears post-Sandy debris from shoreline  
Equipment Operators Muzafer Ramadani and Thomas Scorsone using demolition saw to  
dismantle dock near the 14th hole of Liberty National Golf Course.*



By Paige Morris/The Jersey Journal

on July 03, 2013 at 12:20 PM, updated July 03, 2013 at 12:52 PM

The Passaic Valley Sewerage Commission (PVSC) has spent the past few weeks clearing the major post-Hurricane Sandy debris left along the shoreline adjoining Port Liberte and New York Harbor. The clean-up efforts come just in time for the Statue of Liberty's Independence Day re-opening.

The debris has posed both an aesthetic threat as well as a threat to the health of Port Liberte residents. Timbers, fragments of docks and piers and other floating debris were among the trash cleared from the shoreline

“It’s fitting that PVSC – through our River Restoration Program – has been able to remove this ugly debris and transform these beautiful vistas just in time for our nation’s 237th birthday,” said PVSC Executive Director Michael DeFrancisci.

The PVSC has embarked on an intensive, strategic post-storm cleanup campaign to free the Passaic River and major tributaries of blockages, help with flood control and maintain the quality of the waterways. Cleanups will continue throughout the summer.

The Statue of Liberty, which had been closed for a year until October 28, 2012, was closed once again a day after it re-opened due to the impact of Hurricane Sandy. Now, thanks largely to the efforts of the PVSC, the statue will re-open to the public tomorrow.