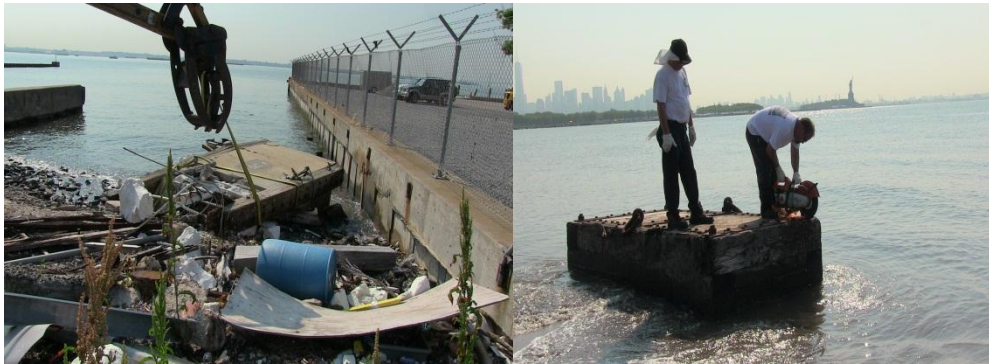


Passaic Valley Sewerage Commission lends ‘Lady Liberty’ a hand



PVSC Crew clears debris left by Sandy off Liberty Island and in New York Harbor

JERSEY CITY – July 10, 2013

No one was spared the wrath of Superstorm Sandy – including the Statue of Liberty.

For the past few weeks, the Passaic Valley Sewerage Commission (PVSC) has been hard at work clearing major debris deposited by Superstorm Sandy from the shoreline that adjoins Port Liberte and New York Harbor.

For residents of Port Liberte – a townhouse and condominium community, which commands a spectacular, panoramic view of the New York Skyline – the debris left behind by Sandy presented an esthetic as well as a safety problem. Among the debris removed from the shoreline are large timbers, pieces of ravaged docks and piers and other floatables that not only are unsightly and dangerous to residents, but hazardous to recreational and commercial traffic in the navigation channel.

“It’s fitting that PVSC – through our River Restoration Program – has been able to remove this ugly debris and transform these beautiful vistas just in time for our nation’s 237th birthday,” said PVSC Executive Director Michael DeFrancisci.

The PVSC has embarked on an intensive, strategic post-storm cleanup campaign to free the Passaic River and major tributaries of blockages, help with flood control and maintain the quality of the waterways. Cleanups will continue throughout the summer.

According to PVSC Commissioner Kenneth J. Lucianin, “PVSC is mindful of the pollution and quality of life issues associated with the storm debris, as well as the navigational and safety



hazards they pose. The removal of this debris is a significant undertaking. We're glad that PVSC was able to lend assistance to our neighboring towns and businesses.”

The Statue of Liberty is a neoclassical sculpture on Liberty Island in the middle of New York Harbor, in Manhattan, New York City. The statue, designed by Frédéric Auguste Bartholdi and dedicated on October 28, 1886, was a gift to the United States from the people of France.

The statue, an icon of freedom and of the United States, is inscribed with the date of the American Declaration of Independence, July 4, 1776. The Statue of Liberty was closed for a year until October 28, 2012, so that a secondary staircase and other safety features could be installed; Liberty Island remained open.

However, one day after the reopening, Liberty Island closed due to the effects of Superstorm Sandy, and the island remains off limits to the public. Public access to the balcony surrounding the torch has been barred for safety reasons since 1916.

The statue and Liberty Island reopened to the public on July 4, 2013.