

# RGGI REGIONAL GREENHOUSE GAS INITIATIVE

## CLIMATE INVESTMENTS DASHBOARD USER MANUAL



## Introduction

Under Governor Murphy's leadership, New Jersey formally rejoined the Regional Greenhouse Gas Initiative (RGGI) in 2020. RGGI is a multi-state, market-based program that establishes a regional cap on carbon dioxide (CO<sub>2</sub>) emissions and requires fossil fuel power plants with a capacity greater than 25 megawatts (MW) to obtain an allowance for each ton of CO<sub>2</sub> emitted annually. Power plants may comply by purchasing allowances from quarterly auctions, other generators within RGGI, or through projects that offset CO<sub>2</sub> emissions. States use the proceeds from the CO<sub>2</sub> allowance auctions to invest in programs to help further reduce CO<sub>2</sub> and other greenhouse gas pollution, spur clean and renewable energy, and provide rate relief on energy bills.

The New Jersey Department of Environmental Protection (NJDEP), along with the New Jersey Board of Public Utilities (NJBPU) and New Jersey Economic Development Authority (NJEDA) each receive a portion of the state's RGGI auction proceeds to invest in climate, clean energy and equity programs. The distribution of investment proceeds is guided through a [Strategic Funding Plan](#), which covers a three-year funding period.

The Strategic Funding Plan identifies the four initiatives the Agencies will invest the RGGI auction proceeds in for the years 2020 through 2022. The initiatives are:

1. Catalyze Clean, Equitable Transportation
2. Promote Blue Carbon in Coastal Habitats
3. Enhance Forests and Urban Forests
4. Create a New Jersey Green Bank.

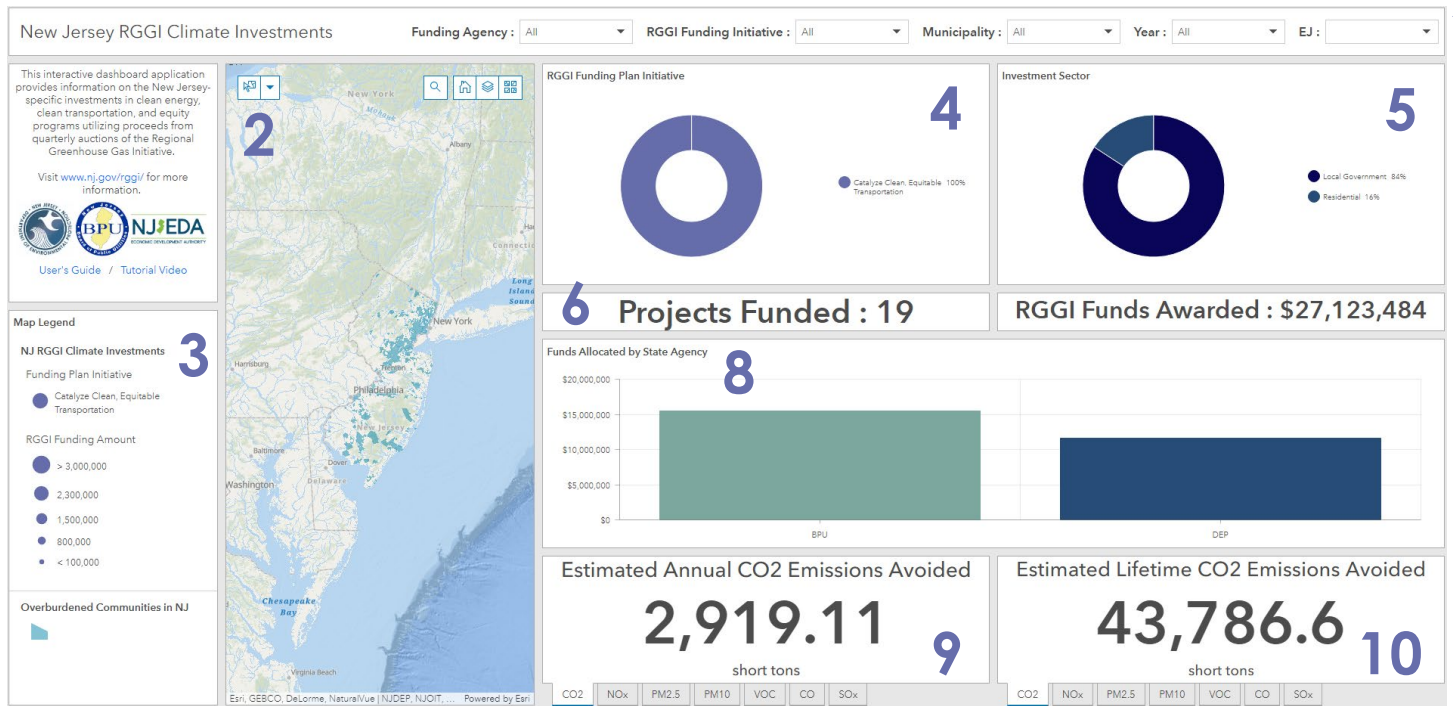
## Purpose of the RGGI Dashboard

Accountability and transparency are essential elements for all Regional Greenhouse Gas Initiative (RGGI) investments. The public needs to know how administering agencies are investing RGGI proceeds and what benefits are being achieved from those investments. The RGGI Climate Investments Dashboard is an online mapping tool that publicly tracks the investment of the state's auction proceeds. It provides detailed, project level information, along with aggregating data across agency and by Strategic Funding Plan Initiative. New Jersey residents can also follow investments made in their communities.

## Using the Dashboard

This dashboard contains a number of different interactive charts and widgets that enable the user to easily digest information about the climate investments being made by the NJDEP, NJBPU, and NJEDA utilizing funds obtained through quarterly auctions of the Regional Greenhouse Gas Initiative. Interacting with different widgets and filters within the dashboard will change the values shown throughout the dashboard, specific to the selections made in the filters. The following section will go through each individual component of the dashboard, and how making certain selections can enable the user to obtain specific and detailed information.

# Dashboard Orientation

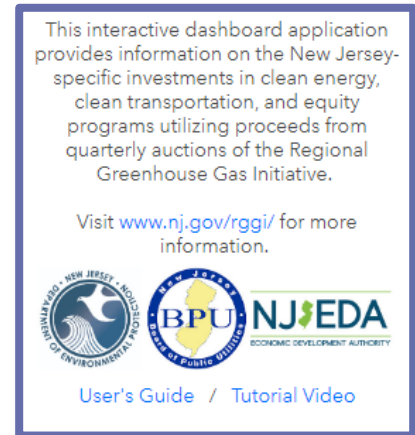


1. Description Box
2. Interactive Map
3. Map Legend
4. RGGI Funding Plan Initiative Pie Chart
5. Investment Sector Pie Chart
6. Number of Funded Projects
7. Dollar Amount of RGGI Funds Awarded
8. Funds Allocated by State Agency
9. Estimated Annual Emissions Avoided of CO<sub>2</sub> and Criteria Pollutants
10. Estimated Lifetime Emissions Avoided of CO<sub>2</sub> and Criteria Pollutants
11. Category Filters

## Widget/Component Descriptions

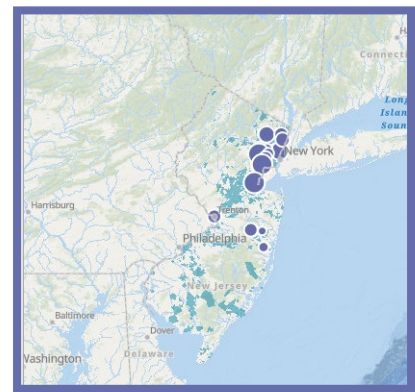
### 1. Description Box

This box provides a brief written overview of the dashboard, stating that it provides information on the New Jersey-specific investments in clean energy, clean transportation, and equity programs utilizing proceeds from quarterly auctions of the Regional Greenhouse Gas Initiative (RGGI). This box also provides hyperlinks to NJ’s RGGI webpage, as well as a link to this User’s Guide document and to a [tutorial video](#). Lastly, the agency logos from the three partner agencies (NJDEP, NJBPU, and NJEDA) are displayed here.



### 2. Interactive Map

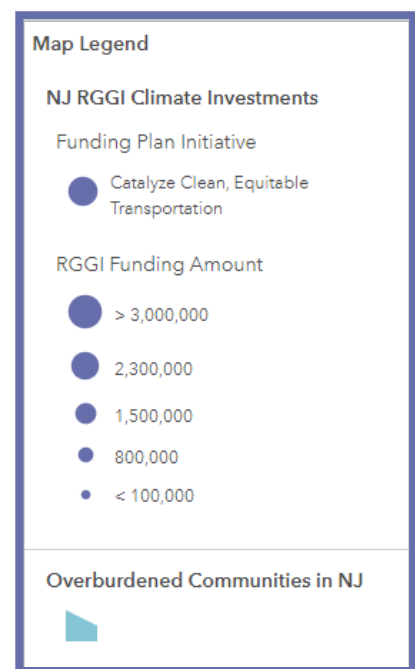
This map shows the location of each project that has been awarded funding. The colors of the dots are representative of the specific Initiative of the RGGI Strategic Funding Plan that each project addresses. The size of each dot is indicative of the amount of funding awarded to each project, with the larger dots representing higher dollar values. Users can zoom in/out on the map to get a closer look at where these projects are located. Clicking a point on the map brings up a pop-up description that provides the user with relevant information about that specific project, including the address, project description, project cost, RGGI funds awarded, and the status of the project.



### 3. Map Legend

The map legend provides context to the symbology of the different data layers that are shown in the map. By default, users will see the color of the dots on the map representing the Initiative of the RGGI Strategic Funding Plan, while the size of the dots represent the dollar value of funds awarded. Also, an overlay of Overburdened Communities in New Jersey is shown by default. An [Overburdened Community](#), as defined by the law, is any census block group, as determined in accordance with the most recent United States Census, in which:

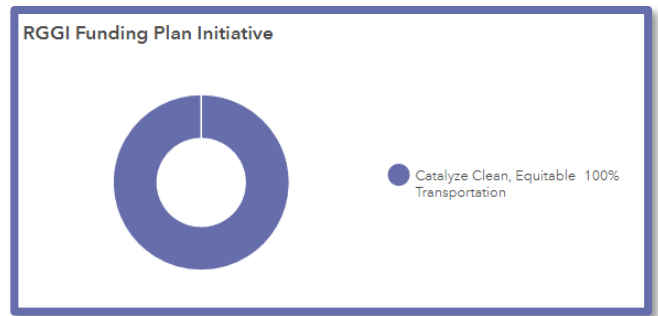
1. at least 35 percent of the households qualify as low-income households (at or below twice the poverty threshold as determined by the United States Census Bureau);
2. at least 40 percent of the residents identify as minority or as members of a State recognized tribal community; or
3. at least 40 percent of the households have limited English proficiency (without an adult that speaks English “very well” according to the United States Census Bureau).



#### 4. RGGI Funding Plan Initiative Pie Chart

This pie chart shows the number of projects that fall into the four overarching Initiatives of the RGGI Strategic Funding Plan:

1. Catalyze Clean, Equitable Transportation
2. Promote Blue Carbon in Coastal Habitats
3. Enhance Forests and Urban Forests
4. Create a New Jersey Green Bank

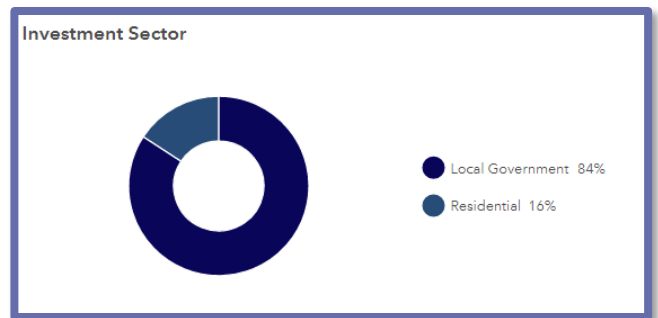


Clicking one of the slices of the pie chart will automatically filter all of the widgets on the dashboard to show the information related to that selection.

#### 5. Investment Sector Pie Chart

This pie chart shows the number of projects that have been awarded that are serving a given sector. The options for sector are:

- Commercial/Industrial
- Institutional
- Local Government
- Non-Profit
- Residential
- State Government
- Administrative
- Small Business



Clicking one of the slices of the pie chart will automatically filter all of the widgets on the dashboard to show the information related to that selection.

#### 6. Number of Funded Projects

This indicator shows the number of projects that have been awarded funding. By default, upon launch, the dashboard shows the total number of projects funded. Selections in other widgets in the dashboard will change this value to be representative of the number of projects that fit the selected criteria.

**Projects Funded : 19**

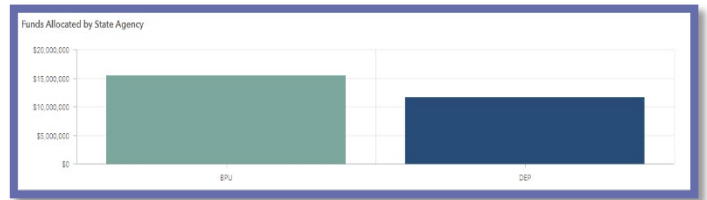
#### 7. Dollar Amount of RGGI Funds Awarded

This indicator shows the dollar value amount of funding that has been awarded. By default, upon launch, the dashboard shows the total dollar value of RGGI funds awarded. Selections in other widgets in the dashboard will change this value to be representative of the funds awarded to projects that fit the selected criteria.

**RGGI Funds Awarded : \$27,123,484**

### 8. Funds Allocated by State Agency

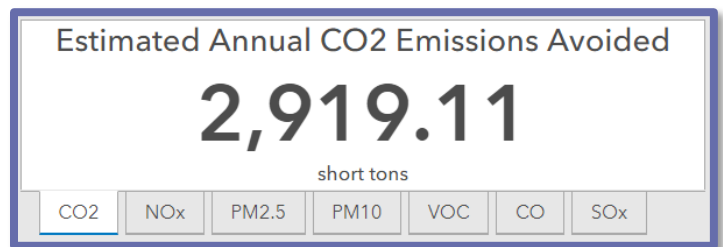
This bar chart shows the total funds awarded by each of the three partner Agencies; The New Jersey Department of Environmental Protection (DEP), the New Jersey Board of Public Utilities (BPU), and the New Jersey Economic Development Authority (EDA). Clicking one of the bars in the chart will filter the entire dashboard to show the specific project-level information for projects awarded by the selected State Agency.



### 9. Estimated Annual Emissions Avoided of CO<sub>2</sub> and Criteria Pollutants

This series of stacked indicators shows the estimated annual emissions avoided for the selected projects. By default, upon launch, the dashboard shows the total estimated emissions avoided from all awarded projects. These values will change based on the selections made in the other widgets in the dashboard. Each tab at the bottom of the indicator box represents a different pollutant, including:

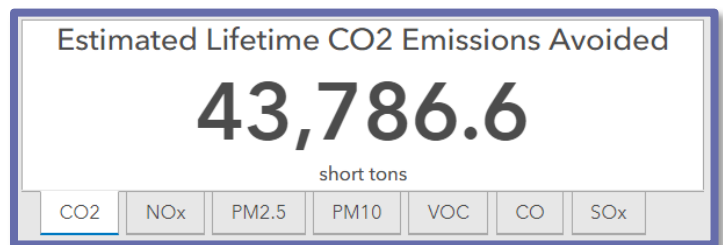
- Carbon Dioxide (CO<sub>2</sub>)
- Nitrogen Oxide (NO<sub>x</sub>)
- Particulate Matter 2.5 (PM<sub>2.5</sub>)
- Particulate Matter 10 (PM<sub>10</sub>)
- Volatile Organic Compounds (VOC)
- Carbon Monoxide (CO)
- Sulfur Oxide (SO<sub>x</sub>)



### 10. Estimated Lifetime Emissions Avoided of CO<sub>2</sub> and Criteria Pollutants

This series of stacked indicators shows the estimated lifetime emissions avoided for the selected projects. By default, upon launch, the dashboard shows the total estimated emissions avoided from all awarded projects. These values will change based on the selections made in the other widgets in the dashboard. Each tab at the bottom of the indicator box represents a different pollutant, including:

- Carbon Dioxide (CO<sub>2</sub>)
- Nitrogen Oxide (NO<sub>x</sub>)
- Particulate Matter 2.5 (PM<sub>2.5</sub>)
- Particulate Matter 10 (PM<sub>10</sub>)
- Volatile Organic Compounds (VOC)
- Carbon Monoxide (CO)
- Sulfur Oxide (SO<sub>x</sub>)



### 11. Category Filters

These series of filters enable users to filter the widgets quickly and easily in the dashboard in the following categories:

- Funding Agency
- RGGI Funding Initiative
- Municipality of Awarded Projects
- Calendar Year of Awarded Projects
- Projects serving or located in Environmental Justice communities

