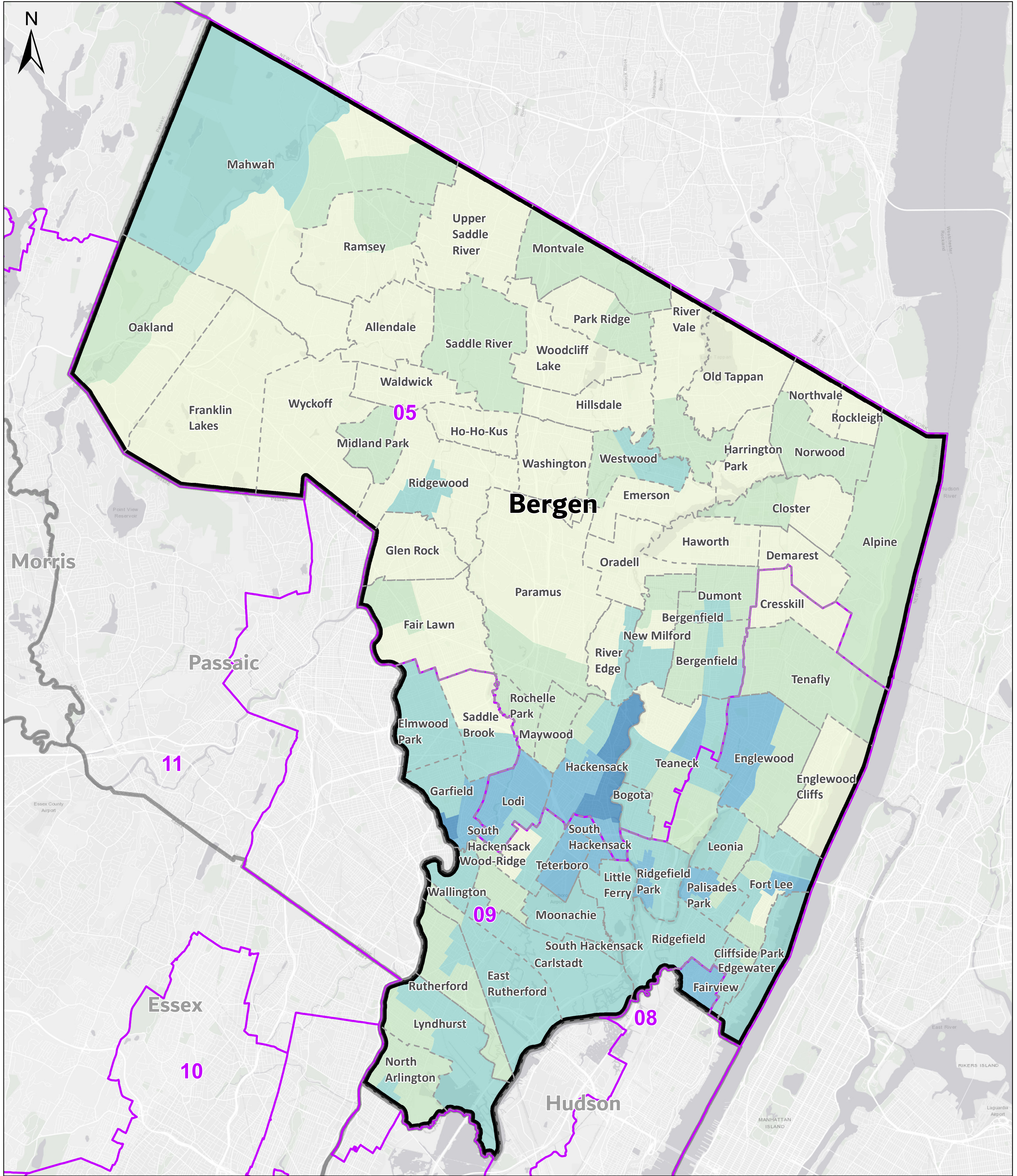
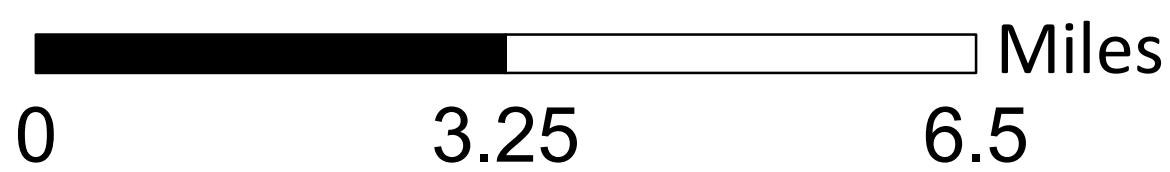


# Bergen County Low Response Score



United States  
**Census**  
**2020**

NAD 1983 State Plane: New Jersey (2900)  
Low Response Score data available at <https://www.census.gov/roam>



**Legend**

- County
- Congressional District
- Minor Civil Division
- Place

**Low Response Score by Tract**

- 30% - 49.9%
- 25% - 29.9%
- 20% - 24.9%
- 16% - 19.9%
- 0.1% - 15.9%
- Rate Not Calculated