

# STATE HISTORICAL MARKER PROGRAM

**Guidelines Overview**

**June 2025**

# INTRODUCTION



# INTRODUCTION

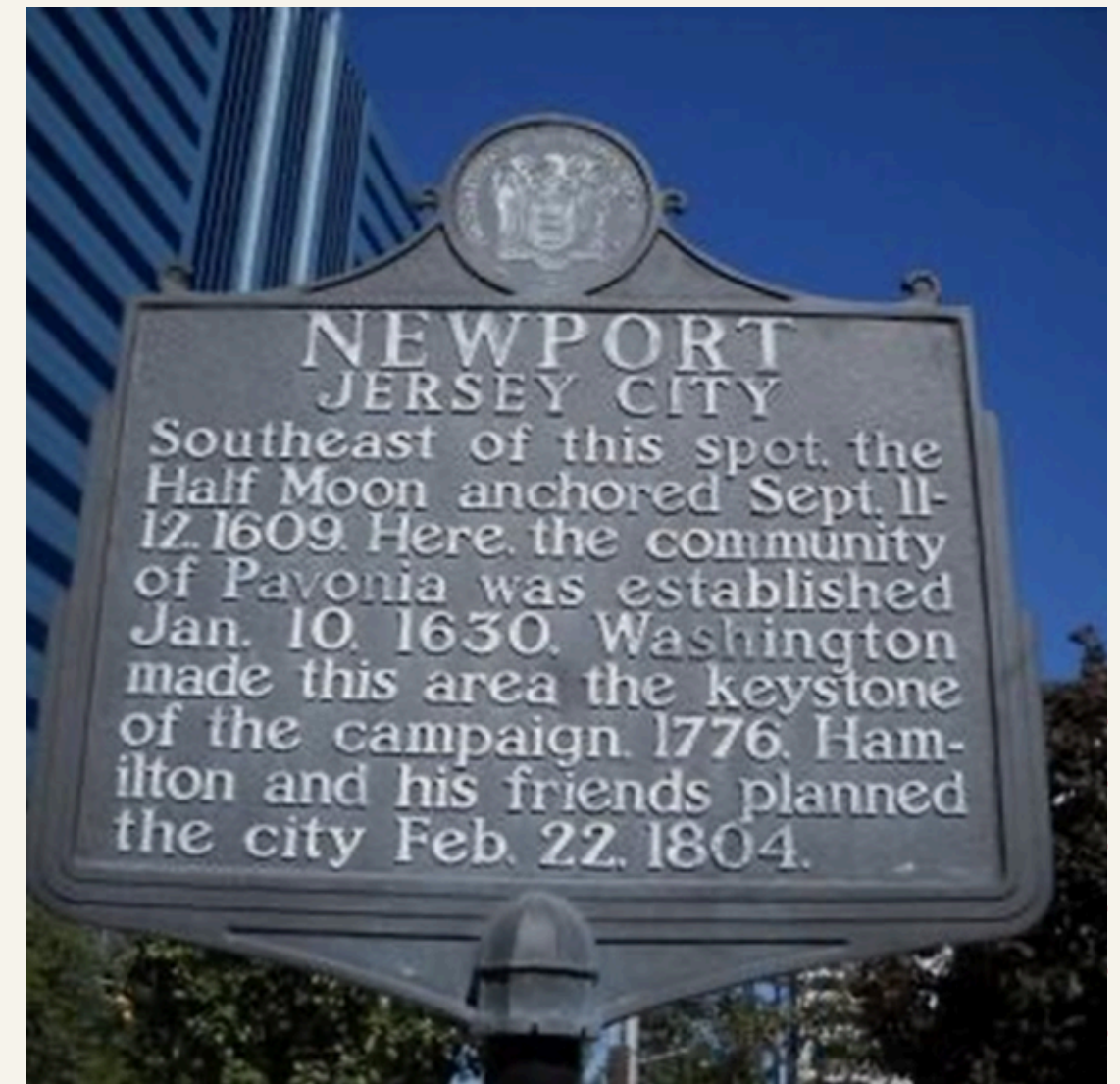


**RevolutionNJ**

ENGAGE THE PAST. SHAPE THE FUTURE.

# INTRODUCTION

**The State of New Jersey produced  
historical markers from the 1920s -1970s**

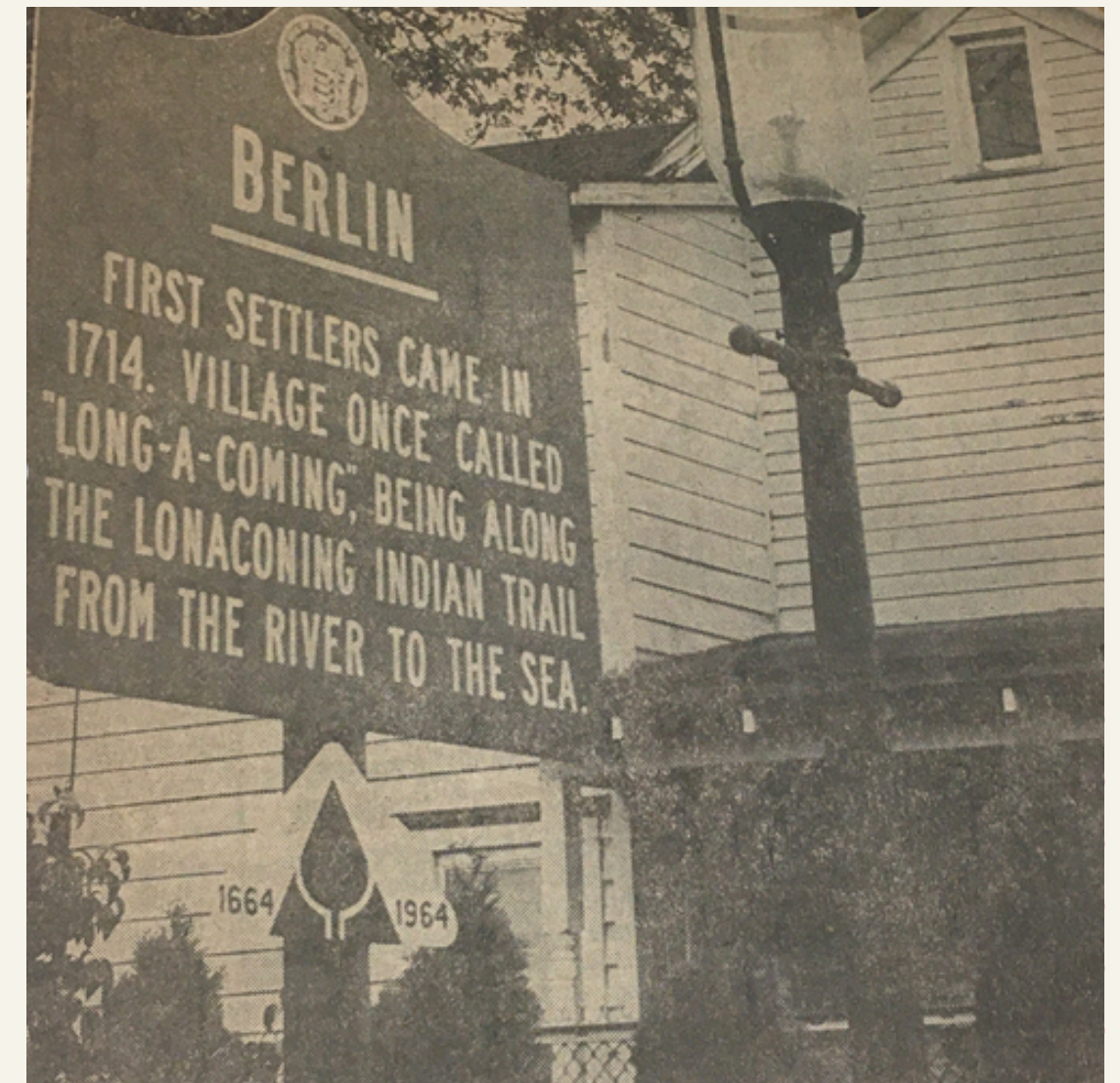




# INTRODUCTION

## 20th Century Markers

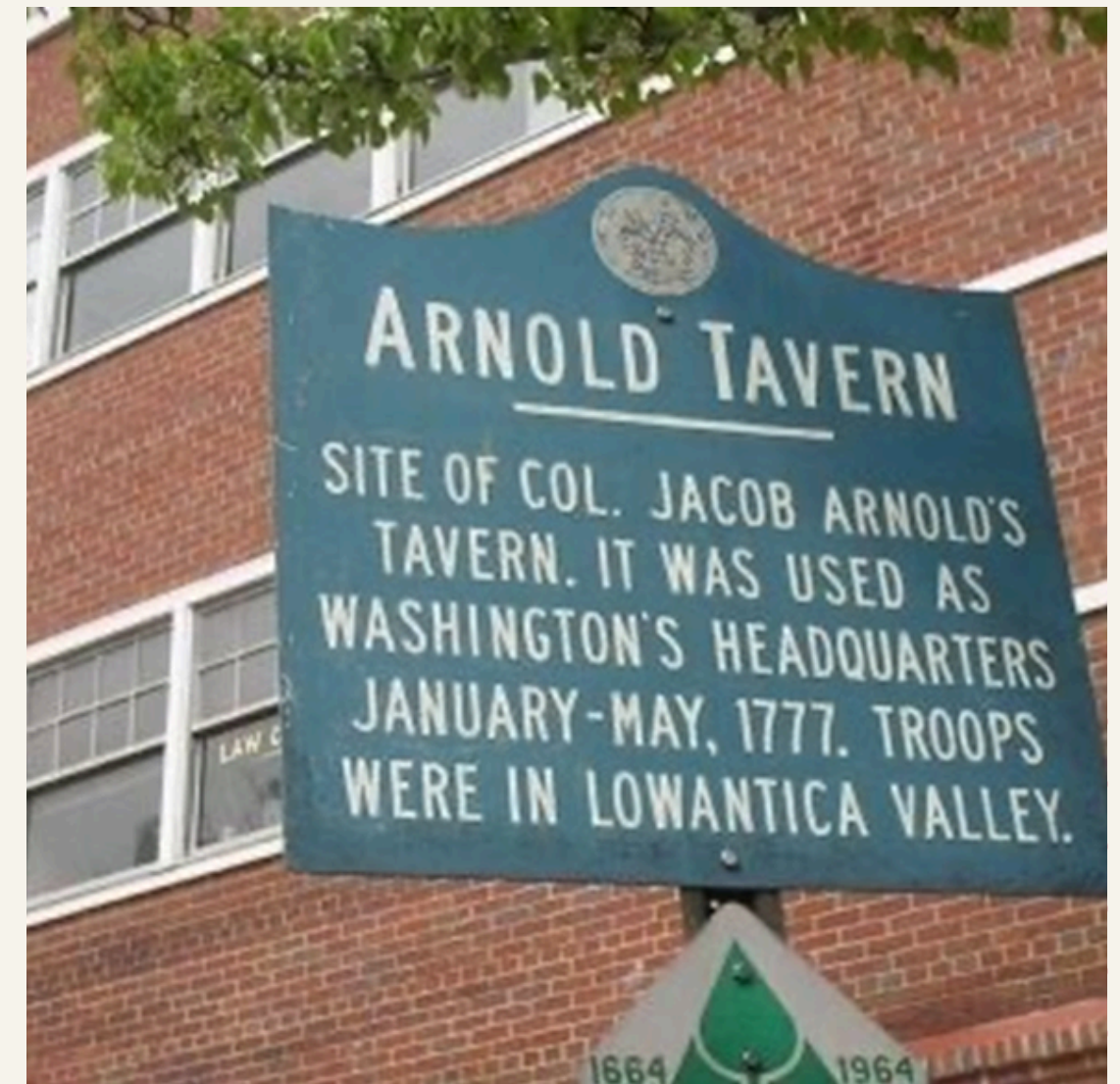
- Total number of historical markers: 455
- Total historical markers still standing: 125
- Total historical markers missing: 330



# INTRODUCTION

## New Funding

- 250th preparation with RevolutionNJ
- This phase will end in December 2026
- SHMP will continue after 2026





# COMMUNITY INPUT

## 4 Meetings

- Camden, NJ
- Paterson, NJ
- Newark, NJ
- Virtual

## Survey

- 438 responses
- 50/50 split between history field members and non
- 43% of respondents were 65+

# PROGRAM GOALS

- 1** Install and replace ~50 historical markers across the state
- 2** Repair and replace 20th century markers as requested
- 3** Collaborate with existing historical marker programs



# GUIDELINES

NJHC | 2025

1

The public will submit nominations for historical marker topics and locations. This applies to both new and updated markers.

2

All new and updated markers must connect to one of RevolutionNJ's themes and demonstrate historical significance on the local, state, or national level

3

Marker applications will be reviewed by our Advisory Committee comprised of subject matter experts and community representatives

# FUNDING

NJHC | 2025

1

**The State can only pay for markers, new or replacements, that are installed on public land.**

2

**Private sites can fund a State Historical Marker Program marker.**

3

**Easements do not count as public land under the legislation. NJHC staff will recommend public land alternatives whenever possible.**

# THEMATIC FRAMEWORK

**Nominations must connect to one of RevolutionNJ's themes**

**Inclusion/ Exclusion**

**Property and  
Sovereignty**

**Revolutionary Ideals**

**Political Participation**

**Movement of People**

**New Jersey as a  
"Battleground"**



# WHERE WILL MARKERS BE PLACED?





# WHERE WILL MARKERS BE PLACED?

**Public decides!**



# AFRICAN AMERICAN HISTORY SITES

**New Jersey Black Heritage Trail**

**vs.**

**New Jersey State Historical  
Marker Program**

# WHICH PROGRAM SHOULD I APPLY TO?

- **State Marker Program**
  - State Marker Program styling
  - Officially listed and promoted as part of the 250<sup>th</sup> commemoration

- **NJ Black Heritage Trail**
  - NJ Black Heritage Trail styling
  - Heritage tourism promotion
  - Additional programming opportunities

# APPLICATION PROCESS

## Primary Sources

Original documents, objects, and sources that were created at the time under study.

## Secondary Sources

Accounts that retell, analyze, or interpret events based on primary sources.

Nominators will be asked to provide draft marker text and location as well as primary and secondary sources supporting the marker's historical claims.



# KEY DATES

NJHC | 2025

**7/11**

**Research Webinar**

**8/12**

**First Round Deadline**

**7/25**

**Early Bird Deadline**

**10/7**

**Second Round Deadline**



**New Jersey Historical Commission | 2025**

# **HERE TO HELP**

**[history.nj.gov](https://history.nj.gov)**

**[RevNJ.org](https://RevNJ.org)**

**For additional questions, please contact:  
[NJHC.Programs@sos.nj.gov](mailto:NJHC.Programs@sos.nj.gov)**

