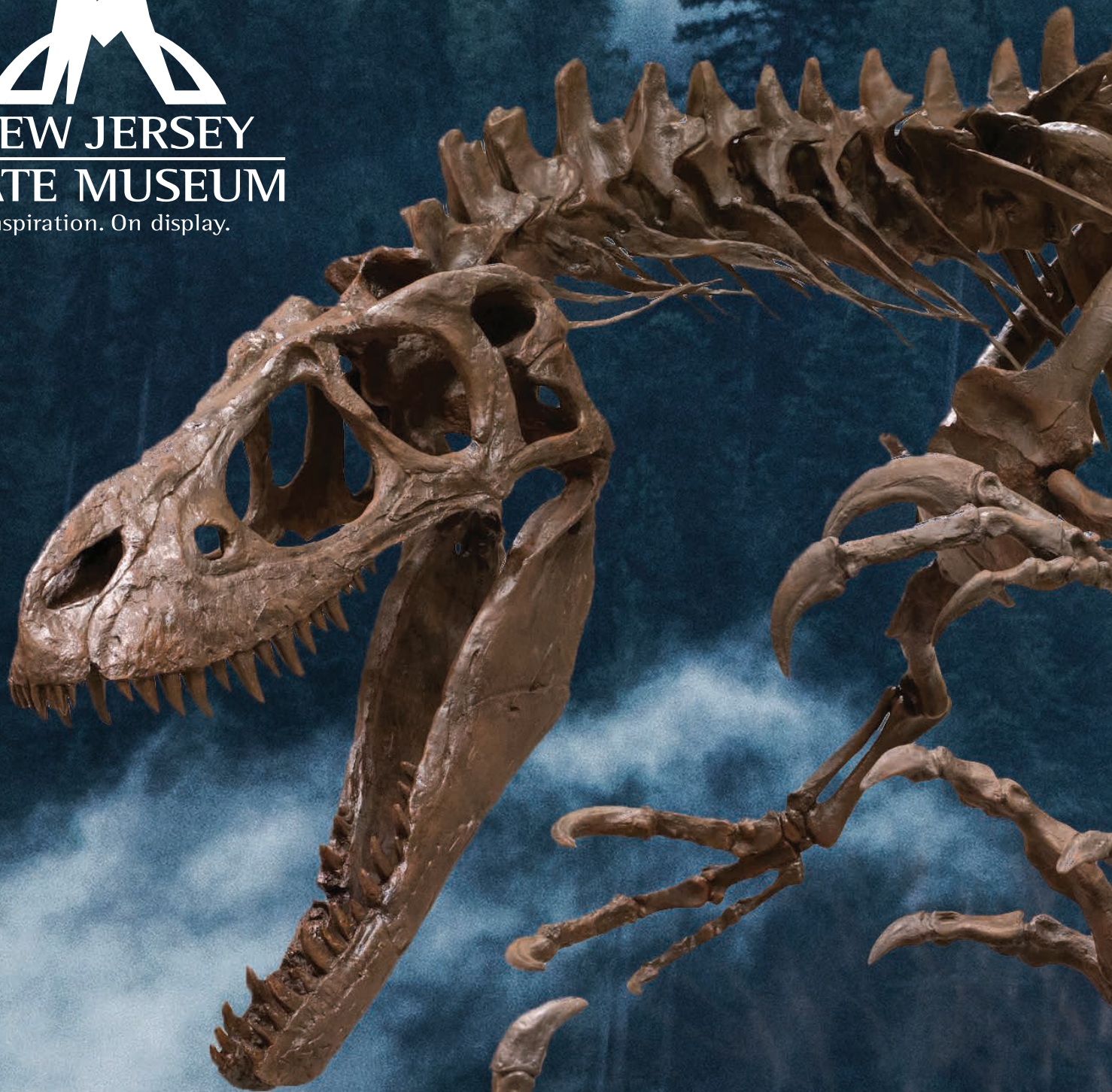




**NEW JERSEY
STATE MUSEUM**

Inspiration. On display.



Field Trip Planning Guide

2019-2020 School Year



Planetarium Featured Shows

NEW THIS YEAR: Scheduled show times are 10 am, 11 am and 1 pm.
Advanced reservations and payment are required.

PLEASE NOTE: Planetarium shows begin promptly at the scheduled times; groups arriving late may miss their show.
We are unable to issue refunds for late arrivals.

LENGTH: 25 to 45 minutes. Most presentations include a New Jersey sky talk.

COST: \$3 per person, including teachers and chaperones.

GROUP SIZE: Our Planetarium seats 140 people; larger groups will be split into two or more shows. Minimum group size of 15 attendees.

NEW! CapCOM Go! (Grades 4-12)

What obstacles did NASA engineers and astronauts overcome to land humans on the moon? Follow the Apollo program through immense challenges, and inspire your students to become the explorers, designers, engineers, thinkers and dreamers of the future!

NEW! Tales of the Maya Skies (Grades 3-12)

The ancient Maya achieved an unparalleled understanding of astronomy. Experience how Maya culture, life, architecture, and legends were intertwined with the ancient Maya's scientific observation and recording of planetary movements.

Earth, Moon & Sun (Grades 2-5)

Our most popular show! Discover Earth's place in the universe, and the patterns in the motion of sun, moon and stars with the help of clever Coyote.

Dark Universe (Grades 7-12)

Unravel the complexities of the cosmos with Neil deGrasse Tyson as your guide! Plunge into Jupiter's atmosphere and explore the mysteries of dark matter and dark energy in this spectacular show.

Wildest Weather in the Solar System (Grades 2-12)

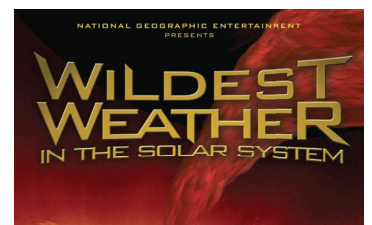
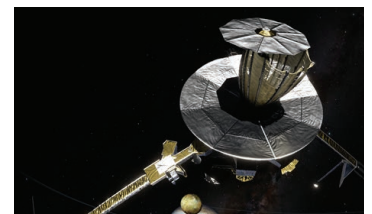
Fly through the thick atmosphere of Venus, magnetic storms on the sun, liquid methane showers on Titan, and a raging 400-year-old-hurricane on Jupiter. You'll emerge glad you live on Earth! Pair this show with our Wide World of Weather workshop.

Magic Treehouse: Space Mission (Grades K-4)

Based on the book series by Mary Pope Osborne. Adventure through space with brother-sister team of Jack and Annie... and their Magic Tree House!

One World, One Sky (Pre-K-1)

Join Sesame Street's Big Bird, Elmo and their Chinese friend Hu Hu Zhu on a discovery of the sun, moon and stars!



Planning Your Trip

Use this guide to help schedule your visit.

Be sure to contact us early – dates and programs are booked on a first-come, first-served basis. Reservations **MUST** be made at least 2 weeks in advance; full payment is due 2 weeks before the program date.

Call (609) 292-1382 or email Reservations.NJSM@sos.nj.gov

Please have the following information ready when you call or email:

- Dates for visit and times of arrival and departure
- School name and mailing address
- Teacher/group leader name & grade level
- Contact telephone number and email address
- Program choices & lunch needs;
Lunch times are 10:00 am, 10:45 am, 11:30 am, 12:15 pm and 1:00 pm
- Number of students and adults
(you need at least 1 chaperone for every 10 students)
- Special mobility or learning needs, or additional information, such as State House tour times, that will help us schedule your day

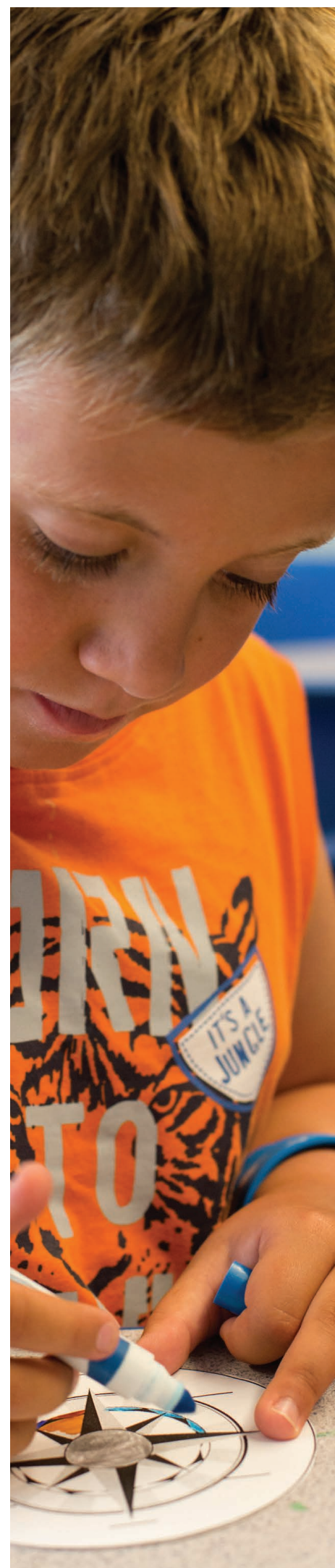
PLEASE NOTE: *Groups arriving late on the day of their trip will be accommodated to the best of our ability. However, we are unable to issue refunds for missed programs.*

Guided Gallery Tours

Guided tours explore NJ History, American art and artists, natural science or the Lenape in NJ. Tours are **FREE**, advanced reservations are required. Minimum group size 15 students; groups larger than 25 students may be split to rotate through tours and other activities.

Homeschools

Homeschool groups of 15 students or more are invited to schedule learning labs, studio experiences, early learning programs, tours and Planetarium shows. No minimum group size is required for Thursday Theater performances. Advanced reservations and payment required; the same fees and cancellation policies apply to school and homeschool groups.



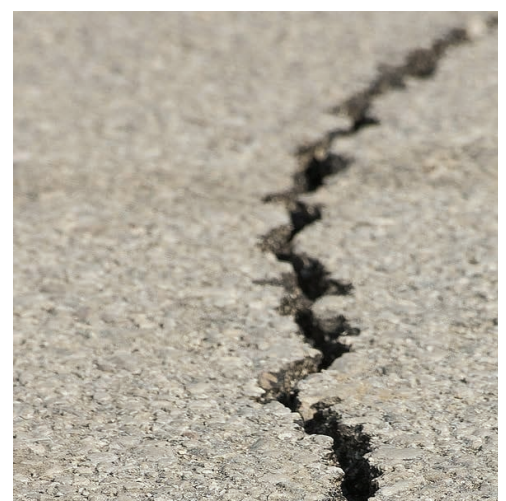
Labs and Studio Experiences

Designed around New Jersey's curriculum standards, our hands-on workshops connect to your classroom and deepen your student's field trip experience. *Advance reservations and payment are required.*

LENGTH: 45 minutes

COST: \$3 per student

GROUP SIZE: 15-30 students per workshop session. Groups larger than 30 may be split to rotate through workshops and other activities.



Wide World Of Weather (Grades K-4)

Explore Earth's dynamic weather and climate patterns, projected onto our interactive Magic Planet, and experiment with an electrifying weather phenomenon!

Lenape Artistic Traditions (Grades 1-5)

Learn about Delaware Lenape culture past and present through the artistry and designs reflected in our galleries. After examining what elements create a culture, students will express their own artistic selves through Lenape-inspired stamped baskets.

Digging For Dinosaurs (Grades 2-7)

Explore Earth's geologic history through New Jersey's extraordinary fossils! Students will understand how life and Earth have changed over time, and use fossil clues to rebuild a Cretaceous landscape from New Jersey 70 million years ago!

Hearth & Home (Grades 4-8)

Humans are among the most adaptable creatures on earth, thriving in very different environments with different resources, climates, and dangers. Looking to the Lenape of New Jersey for inspiration student teams will assess a North American ecosystem and build a unique, sustainable home model.

Earthquakes (Grades 4-10)

An earth science lab with an engineering twist! Digging into earthquakes and plate tectonics, student teams undertake an engineering design challenge to build and test prototype seismometers.

Early Learning

Created especially for preschool and kindergarteners, our programs introduce science, history and art through creative play, crafts and storytelling. *Advanced reservations and payment are required.*

LENGTH: 45 minutes

COST: \$2 per student

GROUP SIZE: 15-20 students per workshop session.

Groups larger than 20 may be split up to rotate through workshops and other activities.



Dino Motion

What can we learn from a footprint? Discover how dinosaurs navigated through their environment as we combine art, imaginative play and real fossils. Your “herd” of young paleontologists will even create a life-sized dinosaur trackway!

Paint Me A Story

Art and storytelling go hand in hand! Children explore the *American Perspectives* gallery and discover the stories that paintings tell through color, themes and feelings. Children will end the session in the studio using real art materials and tools to paint their own unique story.



Stars & Shapes Forever

Introduce young children to our solar system! Meet our favorite star, Sol, and the planets that orbit around it through creative play, then make a stellar craft. Be sure to reserve one of our Planetarium shows to pair with this workshop (additional fees apply).



Discovery Den

Visit our natural sciences play space, designed just for kids ages 0 – 8 years old. Explore nature in New Jersey through touchable specimens, games, books, puppets, costumes and more! Maximum 15 students at one time with adult supervision in this self-guided space.

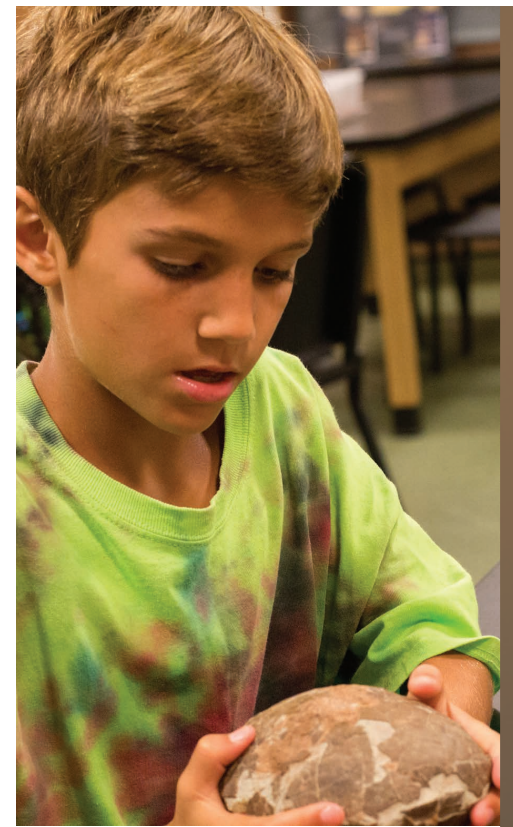
Ask the Experts

More in-depth than a gallery tour, our interactive assemblies focus on the sciences of Paleontology or Archaeology, and the scientists working here at NJSM. Presentations and payment are adaptable to students in grades 3-12. *Advance reservations and payment are required.*

LENGTH: 45 minutes

COST: \$3 per person, including teachers and chaperones.

GROUP SIZE: Perfect for large audiences! Groups of 25 or more will be accommodated in our auditorium. Minimum group size 15 attendees.



Fossil Hunters in New Jersey

New Jersey abounds with fossils – its rocks represent 80 percent of the Earth's history since life began! Paleontologist Dr. Dana Ehret shares exciting local discoveries, what fossils tell us about ancient ecosystems, and all of the challenges paleontologists face in this adventurous field.

People of the Past: Archaeology in New Jersey

How do artifacts help archaeologists understand the lives of prehistoric humans? Archaeologist Dr. Gregory Lattanzi leads this exploration of the unique artifacts, geography and environments of important New Jersey archaeological sites.



Paleo Lab

Take a peek at our latest fossil discoveries! Follow the progress of our scientists and volunteers, preparing fossil specimens from sites in New Jersey, Wyoming and Montana. Open to the public Tuesday through Friday.

Skype a Scientist

Our Curator of Archaeology, Dr. Gregory Lattanzi, is participating in this online program to connect scientists with classrooms! To sign up, access the teacher form here: <http://www.skypeascientist.com/> and be sure to check the box for Archaeology to connect with Dr. Lattanzi.



Thursday Theatre 2020 Season

Every Thursday in May!

Perfect for large groups, choose from a variety of quality live theater shows. We are committed to offering children a theatre experience that engages and inspires, for the amazingly low cost of \$3 per person! Do not miss out! *Advanced reservations and payment are required.*

SHOWTIME: 11:15 am

LENGTH: 45 minutes

COST: \$3 per person, including teachers and chaperones. Trenton Public Schools attend performances FREE of charge.

GROUP SIZE: Groups of all sizes, including homeschools, are welcome.

May 7 - *¿Dónde está Juana?*

¿Dónde está Juana? Native Spanish-speakers Andrés and Christina explore geography, culture, music and language as they search for their friend Juana in this bilingual showcase of the Americas!

May 14 - *Academy of Natural Sciences: Discovering Dinosaurs*

How do we know what dinosaurs were like? Were other animals alive at the same time as the dinosaurs? How were they similar to animals that are still alive today? Learn the answers to the puzzles of paleontology by examining fossils and participating in engaging interactives.

May 21 - *Mad Science: Spin, Pop, Boom!*

Spectacular experiments spark children's curiosity and highlight the very best of Mad Science. Included in the event will be such experiments as "Famous, Flaming Didgeridoo" and "Fantastic Flying Foam Factory."

May 28 *Bantaba: The Circle of Celebration*

Through a high-energy fusion of percussive dance, traditional music, and rousing call-and-response, the Seventh Principle performers connect students to the history of African dance and culture, and celebrate an art form that brings people together around the world.

Exhibits

PRESERVING THE PINELANDS

ALBERT HORNER'S PORTRAITS OF A NATIONAL TREASURE



October 12, 2019 – June 28, 2020

Images that capture the quiet beauty and intimate landscapes of New Jersey's Pinelands National Reserve by photographer Albert Horner, and artifacts from the NJ State Museum's collections which tell just some of the stories of the land, animals, people and industries.

Fine Feathered Friends



Birds as Mainstay and Muse

January 4 – September 13, 2020

Explore the amazing world of avians through nearly 200 rarely-seen artifacts that reveal birds both as ecological mainstays and in their historical role as a muse for New Jersey craftspeople.



First Class Mail
US Postage
PAID
Trenton, NJ
Permit 21

PO Box 530 Inspiration. On display.
205 West State Street
Trenton, NJ 08625-0530

General Information

Location

The New Jersey State Museum is located at 205 West State Street in Trenton, NJ. We are within walking distance of the New Jersey State House and Old Barracks Museums.

Contact Us

For information and reservations, call us at (609) 292-1382 or email Reservations.NJSM@sos.nj.gov

Admission

Open Tuesday through Sunday, 9 am to 4:45 pm. General admission is FREE for school groups. Field trip experiences are each just \$3 per participant; guided gallery tours are FREE. Advance reservations are REQUIRED for all programs, free and fee-based.

Lunch Plans

Lunch space is available by reservation in the Museum's Riverview Court on a first-come, first-served basis. Lunch time should be scheduled at the time of booking.

www.statemuseum.nj.gov

