



NEW JERSEY  
ARTS ANNUAL  

---

CRAFTS 1993

JERSEY CITY MUSEUM



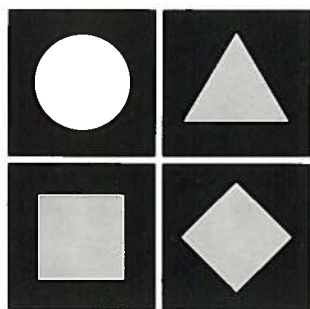
NEW JERSEY  
STATE  
COUNCIL  
ON THE  
ARTS

Funding for this exhibition has been made available in part by the New Jersey State Council on the Arts/Department of State.

All photography courtesy of the artists, except Marjorie Simon page 13 courtesy of Ralph Gabriner

© 1993 Jersey City Museum  
Main Library Building  
472 Jersey Avenue  
Jersey City, NJ 07302

Cover image:  
Lisa Kavalos,  
*Redspotted Maubray Hawkfish*  
(*Amblycirrhitus Pinos*), 1993,  
Marzipan, 4 x 7 x 3 ins.  
Photograph has been inverted  
with the artist's permission.



NEW JERSEY  
ARTS ANNUAL

---

CRAFTS

JERSEY CITY MUSEUM  
SEPTEMBER 9 - NOVEMBER 6, 1993

JERSEY CITY MUSEUM  
BOARD OF TRUSTEES  
1992-1993

Audrey Winkler, Chairman  
Dean Siegal, Vice-Chairman  
Dena Bianchino  
Dominick D'Agosta  
Dr. Carlos Hernandez  
Carol M. Preisinger  
Mark Russoniello  
Mayor Bret Schundler, ex-officio  
Kevin Sluka

JERSEY CITY MUSEUM STAFF

Nina S. Jacobs, Director  
Gary Sangster, Curator  
David Silletto, Business Manager  
Linda Dandridge, Development Director  
Winifred McNeill, Education Coordinator  
Marjorie Branchaud, Education Associate  
Catherine Dunning, Education Associate  
Charles Thomas Strider, Collections Manager  
Francine Corcione, Research Associate/Assistant  
to the Director  
Linda Kugler, Public Relations Officer  
Michele Marcantonio, Administrative Assistant

## NEW JERSEY ARTS ANNUAL: CRAFTS

The *New Jersey Arts Annual* provides an invaluable opportunity for New Jersey artists to exhibit their work in some of the most important museums throughout the state. This exhibition series is an outstanding example of the quality and diversity of our state's artistic talent. It gives all of us the chance to experience and celebrate the wealth of artistic talent in New Jersey.

We are indeed fortunate to have the opportunity to view the works of thirteen of the state's best craft artists as a part of this *New Jersey Arts Annual: Crafts*, hosted by the Jersey City Museum. It is especially exciting to note that the works of these artists will be seen by so many people throughout the month of October, as New Jersey joins the nation to celebrate the Year of the American Craft.

By serving as host for this Arts Annual, the Jersey City Museum is continuing its tradition of showcasing the talent and achievements of some of New Jersey's best artists. I thank the New Jersey State Council on the Arts and all of the participating museums and artists for their great contributions to New Jersey's cultural life.

Daniel J. Dalton  
Secretary of State



NEW JERSEY STATE COUNCIL ON THE ARTS

The New Jersey State Council on the Arts is pleased and proud to co-sponsor the *New Jersey Arts Annual: Crafts* at the Jersey City Museum. This is the seventeenth in the series of Arts Annual exhibitions held throughout the state since 1985, and is the first time that the crafts segment of the Arts Annual exhibition series is being hosted by the Jersey City Museum.

It is important to note that this exhibition extends throughout the month of October, the month marking two important national celebrations, the "Year of the American Craft 1993," and "National Arts and Humanities Month." The *New Jersey Arts Annual: Crafts* is one of many events taking place throughout New Jersey highlighting the works of craft artists. The Council is very proud of New Jersey's crafts community and sincerely hopes that this exhibition helps to illustrate what makes crafts so distinctive and vibrant among the many forms of art.

We extend warm best wishes to the artists for continued success and development in their artistic endeavors. We also wish to thank the Jersey City Museum Director, Nina S. Jacobs, Curator, Gary Sangster, and the dedicated staff of the Museum, for their professional attention to every detail of this event.

Each year, the council looks forward to its role of providing New Jersey artists and arts organizations with opportunities such as the *New Jersey Arts Annual*. We commend the six participating museums: the Jersey City Museum, The Montclair Art Museum, The Morris Museum, The Newark Museum, the New Jersey State Museum and The Noyes Museum for their important contributions in providing millions of people annually with opportunities to appreciate the exceptional talent of New Jersey's best artists through the New Jersey Arts Annual series.

Sharon A. Harrington  
Chairman

Barbara F. Russo  
Executive Director

Tom Moran  
Visual Arts Coordinator

## DIRECTOR'S STATEMENT

The Jersey City Museum takes great pleasure in joining with the New Jersey State Council on the Arts and five other participating New Jersey museums to present the New Jersey Arts Annual. This unique series consists of a fine arts exhibition in spring/summer and a crafts exhibition in fall/winter. It provides the opportunity for The Newark Museum, The Morris Museum, the New Jersey State Museum, The Montclair Art Museum, The Noyes Museum and the Jersey City Museum to come together with the New Jersey State Council on the Arts in a collaborative spirit to highlight the activity of established and emerging artists who are working in the state, and to provide the public with a chance to view high-quality works that represent the diversity and breadth of New Jersey's artistic community.

It is a distinct pleasure to present the *New Jersey Arts Annual: Crafts* in 1993, a year that has been nationally designated as "The Year of American Craft". October has been selected as New Jersey's month to join in the national celebration by recognizing and paying tribute to the creative work of the hand. In this spirit the Jersey City Museum is very pleased to host the *New Jersey Arts Annual: Crafts, 1993*.

Many talented people have worked to prepare this exhibition. I would especially like to thank the New Jersey State Council on the Arts for its support and to offer particular thanks to Tom Moran, Visual Arts Coordinator, for his commitment to the Arts Annual process, and for his rigorous concern for artists in New Jersey. Deepest gratitude is extended to Hortense Green, the National State Coordinator for "The Year of American Craft", whose boundless dedication to crafts has encouraged the work of, and brought attention to, countless artisans and craftpeople who make New Jersey their home. Additional gratitude is also offered to Gary Sangster, the Curator for selecting the artists and works in the exhibition, with special thanks to Tom Strider for his organization and conscientious attention to detail. I am also very grateful to the team of installers who carefully presented the works, and to the entire staff of the JCM for their efforts in making this exhibition possible. Finally, the artists who have generously loaned works to the exhibition are deserving of our sincerest praise and thanks for providing objects of lasting beauty for our discovery and enjoyment.

Nina S. Jacobs  
Director  
Jersey City Museum

## FOREWORD

### *Curator's Notes*

It has been a privilege for me to participate in the development of the *New Jersey Arts Annual: Crafts*, 1993. The challenges of resolving different kinds of work, art materials, and ideas of aesthetic form and function into a coherent exhibition that speaks of the range and interests of artists involved with craft in New Jersey has been both stimulating and exacting.

After reviewing a broad pool of material that was submitted for this *Arts Annual* and seeking further material through the resources of the Slide Registries of the Jersey City Museum and the New Jersey State Council on the Arts, I have been able to draw together an exhibition that reflects aspects of craft that are inherently functional in nature. However, the notion of pure functionality, the foundation of much of modernist design, is not the focal point of the exhibition. Rather the basis of the exhibition is an exploration of function, where the nature of materials, in conjunction with finish and technique, serve as the nodal point through which aesthetic experience is framed and delineated.

The work included is drawn from a small number of artists, thirteen in all, providing an opportunity for the artists to present a broader selection of material than is frequently possible in statewide survey exhibitions. Tables and chairs in both rustic and highly finished forms, by Mark Sharrock and Pete Tischler respectively, are presented in various places within the galleries. John Hein is represented by a single amaranth cabinet, made from a variety of timbers including walnut, mahogany, amaranth, rosewood, and wenge. Kenneth Calum MacBain presents innovative silver tableware, combining the brilliance of anodized colors and high-key acrylic with polished metal surfaces. There are porcelain cups with highly stylized designs, produced at an international porcelain conference in Prague, by Marion Munk. Ceramic plates and teabowls by Mark Forman resonate with oriental references but remain unequivocally local. Jewelry, made from street detritus, by Marjorie Simon, or from the improbable material of safety pins, by Damita-Jo Nicholson, convey an understated commentary on "the economy of means" in making valuable art objects. John Graney's metalwork for heavy-duty fences, candle lamps, and fireplace tools is at once powerful and decorative. Ina S. Chapler's installations of miniature ceramics that refer to the local history of pottery are intriguing and are presented in the context of several historic jugs and containers from the eastern U.S. seaboard. There is an elegant sand-cast glass bowl and a glass sculpture by Don Manuel Gonzalez. An intriguing note is set by Zoe Morrow who uses shredded U.S. bills as a legitimate weaving material to make small "baskets of money" that create complex and whimsical surface patterns. Finally, there are a selection of more than twenty lifelike reproductions of fish, made by Lisa Kavalos, sculpted from an unlikely edible source of marzipan.



I would like to thank the New Jersey State Council on the Arts for its continued support of contemporary arts and crafts throughout New Jersey. I would also like to thank all the artists who submitted material for consideration for this exhibition for their interest in the *Arts Annual* and Jersey City Museum. I wish to express my particular appreciation to the artists who were invited to exhibit in Jersey City Museum's *New Jersey Arts Annual: Crafts* for 1993 for contributing their work and commitment to this project.

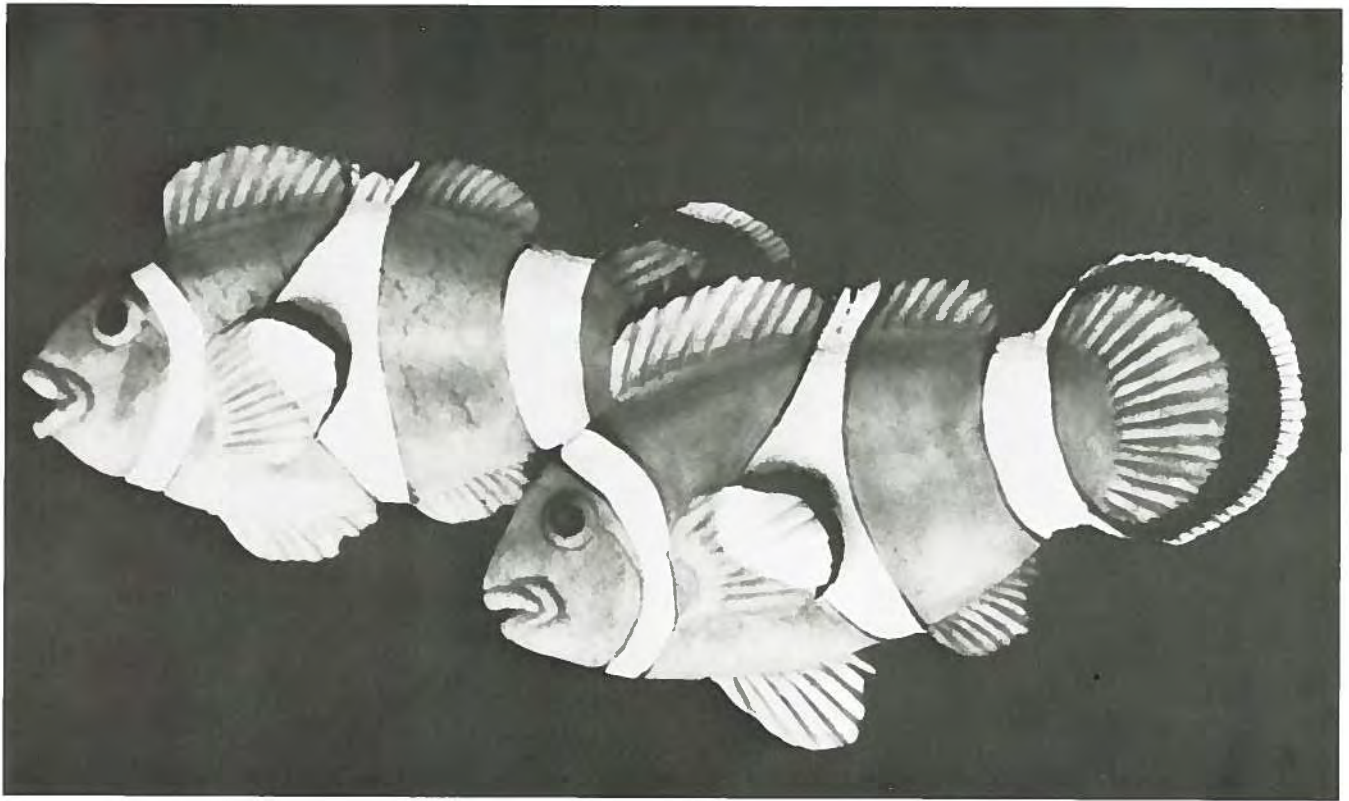
My thanks to Stephen and Joanne Gucciardo of Gucciardo Design Inc. who facilitated the production of the catalogue and other printed materials for this *Arts Annual*.

None of the fine body of exhibitions that are presented at Jersey City Museum can be accomplished without the generous participation of all staff members. I would like to thank my colleagues at Jersey City Museum for their invaluable support, advice, commentary, and assistance. In particular, Winifred McNeill continues to develop innovative and exciting education projects to complement the exhibition program, and the forums for the *Arts Annual* extend her thoughtful approach to enhancing understanding of contemporary artists' work. Also, Alison McGoran's work on the compilation of materials for the catalogue has been invaluable. I wish to extend my sincerest appreciation to the Jersey City Museum's Collections Manager, Tom Strider, who has been a constant aid and critical resource in the development, realization, and presentation of this project. Finally, our installation crews and art handlers continue to demonstrate exceptional talent and energy in producing complex exhibitions and displays with apparent ease.

Gary Sangster  
Curator  
Jersey City Museum

ARTIST LIST

Ina S. Chapler  
Mark W. Forman  
Don Manuel Gonzalez  
John Graney  
John Hein  
Lisa Kavalos  
Kenneth Calum MacBain  
Zoe Morrow  
Marion Munk  
Damita-Jo Nicholson  
Mark Sharrock  
Marjorie Simon  
Pete Tischler



Lisa Kavalos  
*Clown Fish (Amphiprion Percula)*  
1993  
Marzipan and food colors  
3½ x 5¼ x ¼ ins.



Mark Sharrock  
*Chair*  
1991  
Wood and rush  
38 x 18 x 16 ins.



Marjorie Simon

*Necklace*

1993

Sterling silver, epoxy resin, broken  
car glass, rusted metal, and rubber

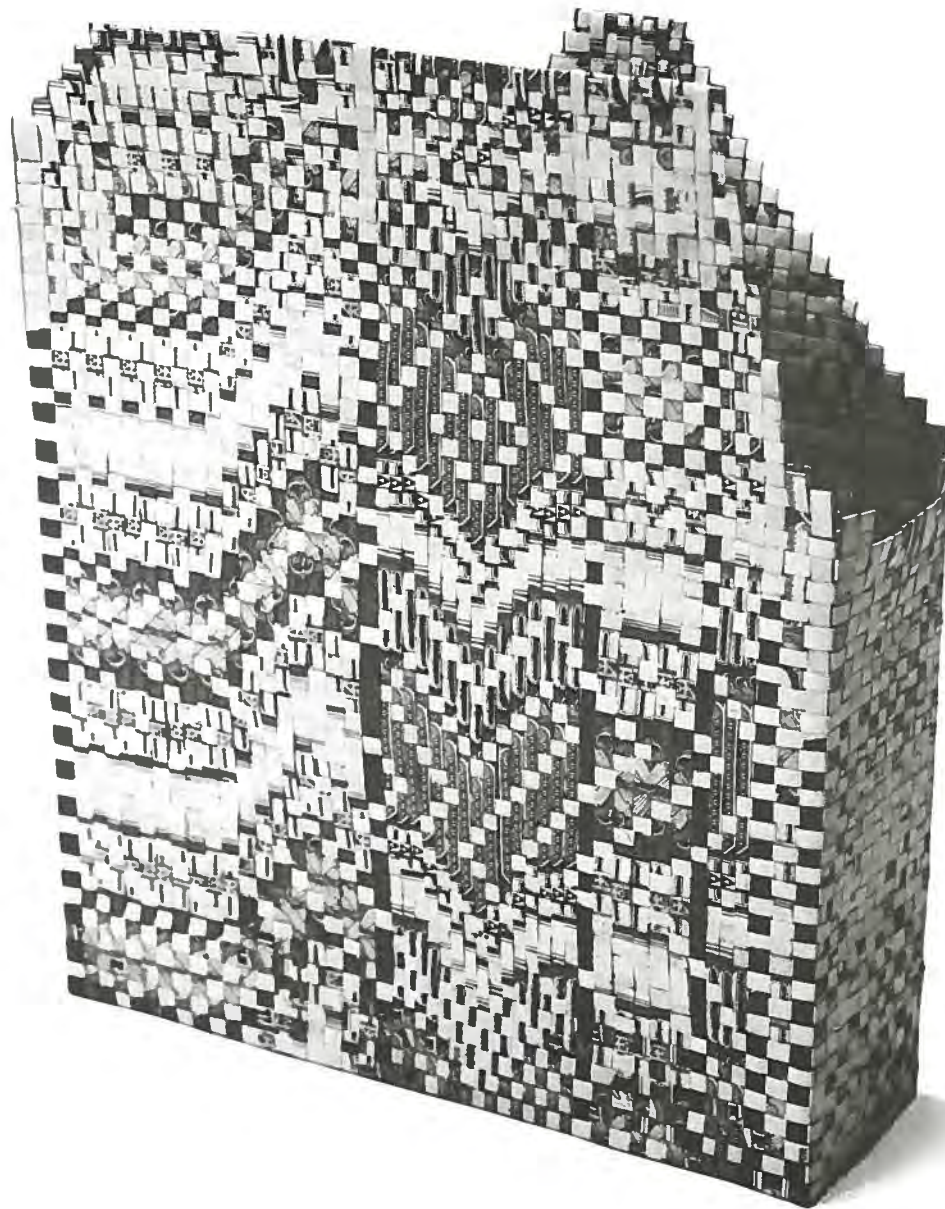
5 x 1½ ins.

(Not in exhibition)



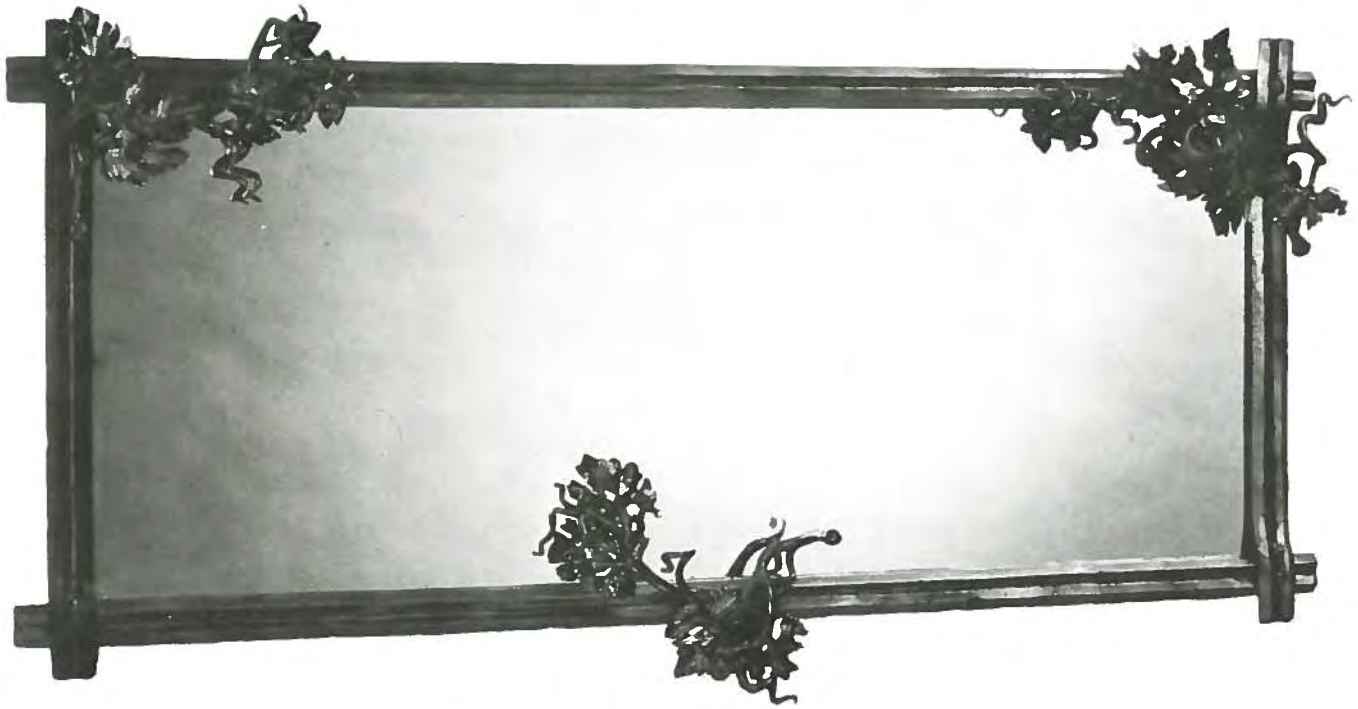


Zoe Morrow  
*Oh Why*  
1991  
Basket woven of  
shredded money  
7¼ x 6 x 1¼ ins.



Marion Munk  
*Striped Triangle*  
1993  
Porcelain  
4¼ x 5¼ x 3¼ ins.





John Craney  
*Grape Leaf Mirror*  
1992  
Forged metal  
50 x 20 ins.  
(Not in exhibition)

Pete Tischler  
*Ash Armchair*  
1992  
White ash  
28¼ x 22¼ x 20 ins.







Ina S. Chapler  
*Small Ware Assemblage (Horizontal)*  
1992  
Sawdust, raku, and  
luster-fired porcelain  
6½ x 50 x 3¼ ins.







John Hein  
*Amaranth Cabinet*  
1993  
Walnut, mahogany, amaranth,  
rosewood and wenge  
24 x 40 x 14 ins.



Damita-Jo Nicholson  
*The Nile*  
1987  
Safety Pins  
21¼ x 7 ins.  
(Not in exhibition)

Mark W. Forman  
*Tea Bowl*  
1993  
Clay and glaze  
3¼ x 4½ ins.



Don Manuel Gonzalez  
*Lure of the Siren*  
1993  
Sand-cast glass with  
fabricated bronze  
13¼ x 13 x 3 ins.





Kenneth Calum MacBain  
*Salt and Pepper Shakers*  
1993  
Nickel, silver and acrylic  
3 x 1¼ x 1¼ ins. each



WORKS OF ART IN THE EXHIBITION

Unless noted otherwise, the work is lent by the artist. Measurements are in inches.

**Ina S. Chapler**

*Small Ware Assemblage (Horizontal Freestanding)*  
1992  
Sawdust, raku, and luster-fired porcelain  
6 x 20 x 3½

*Ceramic Miniatures (3)*  
1992  
Sawdust-fired porcelain  
4¼ x 6 x 4 in plexiglass box

*Small Ware Assemblage (Vertical)*  
1993  
Wood-fired porcelain  
20 x 3 x 3½

*Small Ware Assemblage (Vertical)*  
1992  
Wood-fired and rustic porcelain  
20 x 3 x 3½

*Small Ware Assemblage (Horizontal)*  
1992  
Sawdust, raku, and luster-fired porcelain  
6½ x 50 x 3¼

*Ceramic Miniatures (3)*  
1991  
Wood-fired porcelain  
3½ x 6 x 2½

*Ceramic Miniatures (3)*  
1991  
Sawdust-fired porcelain  
3½ x 6 x 4

*Ceramic Miniature*  
1992  
Wood-fired porcelain  
2½ x 1¼ x 1¼

*Ceramic Miniatures (3)*  
1993  
Reduction-fired porcelain  
2½ x 4 x 4

*Ceramic Miniature*  
1992  
Wood-fired porcelain  
3¼ x 2 x 2 on an ebony stand

*Ceramic Miniature*  
1992  
Wood-fired porcelain  
3½ x 1½ x 1½

*Ceramic Miniatures (5)*  
1991  
Wood-fired, shino glaze, porcelain  
3½ x 10 x 3

*Ceramic Miniatures (3)*  
1991  
Wood-fired porcelain  
3¼ x 4 x 4

*Ceramic Miniatures (2)*  
1992  
Wood-fired porcelain  
3½ x 4 x 3

Stoneware Jug  
circa 1840  
Salt-glazed stoneware  
From the collection of Ina S. Chapler

Storage Jar  
circa 1840  
Salt-glazed, cobalt decoration,  
stoneware  
From the collection of Ina S. Chapler

Small Bottle  
circa 1840  
Salt-glazed stoneware  
From the collection of Ina S. Chapler

Bottle  
circa 1840  
Salt-glazed stoneware  
From the collection of Ina S. Chapler

**Mark W. Forman**

*Tea Bowl*  
1993  
Clay and glaze  
3¼ x 5

*Tea Bowl*  
1993  
Clay and glaze  
3½ x 4¼

*Tea Bowl*  
1993  
Clay and glaze  
3½ x 5

*Serving Plate*  
1993  
Clay and glaze  
10½ x 10½

*Tea Bowl*  
1993  
Clay and glaze  
3½ x 5½

*Tea Bowl*  
1993  
Clay and glaze  
3¼ x 4¼

*Tea Bowl*  
1993  
Clay and glaze  
3 x 4¼

*Tea Bowl*  
1993  
Clay and glaze  
3½ x 5

*Serving Plate*  
1993  
Clay and glaze  
12 x 13

*Serving Plate*  
1993  
Clay and glaze  
9¼ x 14¼

**Don Manuel Gonzalez**

*Lure of the Siren*

1993

Sand-cast glass with fabricated bronze  
13¼ x 13 x 3

*Icon*

1992

Sand-cast/blown glass  
4 x 14 x 14

**John Craney**

*Cat Tail Wall Sculpture*

1992

Forged pipe and angle iron, welded,  
painted with sprayed patina overcoat  
40 x 16 x 3

*Ivy Leaf Yard Fence - a Sketch in Iron*

1991

Forged steel sample of 65' of yard  
fence, repoussé leaves, collared pickets  
65 x 30 x 2

*Cat Tail Floor Sculpture*

1993

Forged steel, pipe and angle iron,  
raised plate steel base  
50 x 16 x 12

*Cat Tail Sculptural Table*

1993

Forged steel, pipe and angle iron, glass  
discs painted with patina overcoat  
52 x 16 x 14

*Bell Chandelier*

1992

Forged steel, forged pipe painted black  
with graphite paste top coat  
26 x 32 x 32

*Scroll Window Grille*

1991

Forged steel with traditional joinery  
techniques, mortise & tenon, collared  
scrolls slit punched and drift  
36 x 32 x 2

*Grape Leaf Hearth Screen*

1991

Forged steel branches and frame,  
repoussé grape leaves  
30 x 40 x 3

*Balcony Rail - a Sketch in Iron*

1992

Forged steel, forged repoussé leaves  
and collared joinery  
47½ x 10½ x 29½

**John Hein**

*Amaranth Cabinet*

1993

Walnut, mahogany, amaranth,  
rosewood and wenge  
24 x 40 x 14

**Lisa Kavalos**

*Orange-Finned Loach (Botia Modesta)*

1993

Marzipan and food colors mounted on  
an elliptical plaque  
2 x 5 x ¼

*Starfish (Stella Picus)*

1993

Marzipan and food colors mounted on  
an elliptical plaque  
4¼ x 3¼ x 1

*Batfish (Pletax Pinnatus)*

1993

Marzipan and food colors mounted on  
an elliptical plaque  
7 x 3¼ x 1

*Sea Horses (Hippocampus Hudsonius)*

1993

Marzipan and food color mounted on  
an elliptical plaque  
5½ x 1½ x 1 and 3½ x 1 x ½

*Ceylon Killfish (Aplocheilus Dayi)*

1993

Marzipan and food colors on an  
elliptical plaque  
1½ x 3¼ x ½

*Warpaint Shiner (Notropis Coccogenis)*

1993

Marzipan and food colors mounted  
on an elliptical plaque  
2¼ x 5½ x 2

*Sea Perch (Plectorhynchus Chaetodonoides)*

1993

Marzipan and food colors mounted  
on an elliptical plaque  
2¼ x 3¼ x ¼

*Tadpole Matdom (Noturus Gyrimus)*

1993

Marzipan and food colors on an  
elliptical plaque  
2 ¼ x 6 ½ x ¼

*Untitled (Cantbigaster Margaritatus)*

1993

Marzipan and food colors mounted  
on an elliptical plaque  
2¼ x 6 x 1¼

*Untitled (Plectorhynchus Albovittatus)*

1993

Marzipan and food colors mounted  
on an elliptical plaque  
3 x 5¼ x ¼

*Banded Chichlid (Cichlasoma Sererum)*

1993

Marzipan and food colors mounted  
on an elliptical plaque  
5 x 6¼ x ¼

*Surgeon Fish (Paracanthurus Theutbis)*

1993

Marzipan and food colors mounted  
on an elliptical plaque  
3¼ x 8 x 1

*Green Discus (Symphysodon Aequifasciata)*

1993

Marzipan and food colors mounted  
on an elliptical plaque  
7 x 7 x ½

*Clown Fish (Amphiprion Percula)*

1993

Marzipan and food colors mounted  
on an elliptical plaque  
3½ x 5¼ x ¼

*Redspotted Mawbray Hawkfish*

*(Amblycirrhitus Pinos)*

1993

Marzipan and food color mounted  
on an elliptical plaque  
3½ x 9 x 3

*Catfish (Ictalurus Lacustris)*

1993

Marzipan and food colors mounted  
on an elliptical plaque  
3½ x 9 x 3

*Oscar (Astronotus Ocellatus)*

1993

Marzipan and food colors mounted  
on an elliptical plaque  
5 x 10¼ x ¼

*Female Brook Trout (Salvelinus Fontinalis)*

1993

Marzipan and food colors on an  
elliptical plaque  
5½ x 10½ x 2½

*Tarpon (Megalops Atlantica)*

1993

Marzipan and food colors mounted  
on an elliptical plaque  
6 x 14 x 1

*Longnose Garr (Lepisosteus Osseus)*

1993

Marzipan and food colors mounted  
on an elliptical plaque  
3½ x 22 x ¼

**Kenneth Calum MacBain**

*Flatware*

1992

Sterling silver and anodized aluminum  
(purple, yellow and blue)  
8 x 2 each

*Flatware*

1992

Sterling silver and acrylic (red)  
7½ x 1½ each

*Flatware*

1993

Sterling silver and acrylic (purple)  
7 x 1½ each

*Salt and Pepper Shakers*

1993

Nickel, silver and acrylic  
3 x 1¼ x 1½ each

*Salad Serving Set*

1993

Sterling silver and anodized aluminum  
10 x 3 each

*Salad Serving Set*

1993

Sterling silver and acrylic (black)  
11 x 3 each

*Salad Serving Set*

1993

Sterling silver  
and halographic plastic  
11 x 3 each

*Napkin Ring Holders*

1993

Anodized aluminum  
1 x 2 x 2 each

**Zoe Morrow**

*Rippled Green*

1992

Basket woven of shredded money  
7¼ x 6 x 2¼

*Grey Twilled Bag*

1993

Basket woven of shredded money  
6¼ x 9¼ x 6¼

*Ob Why*

1991

Basket woven of shredded money  
7¼ x 6 x 1¼

*Gothic Twill*

1988

Basket woven of shredded money  
7 x 2¼ x 2¼

*burning a hole in my pocket*

1990

Basket woven of shredded money  
6¼ x 6 x 2

*V tower*

1989

Basket woven of shredded money  
8¼ x 4¼ x 4¼

*Off one side but back on the other*

1991

Basket woven of shredded money  
7½ x 6 x 2

*Green tower*

1992

Basket woven of shredded money  
8¼ x 2 x 2

*Pent-a-cent*

1993

Basket coiled of shredded money  
3 x 8¼ x 8¼

*American Green*

1990

Basket woven of shredded money  
10 x 10¼ x 5

*Sign of the Times II*

1993

Basket coiled of shredded money  
4 x 8 x 10



*Pour Basket*

1993

Basket coiled of shredded money  
4 x 8½ x 5

*Grid & Graph*

1991

Basket woven of shredded money  
7 x 5½ x 2

*This Way*

1990

Basket woven of shredded money  
7¼ x 4½ x 4½

*Graph it*

1989

Basket woven of shredded money  
6¼ x 8 x 5

*Money Mailed*

1987

Basket woven of shredded money  
9½ x 4½ x 1½

100

1990

Basket woven of shredded money  
7½ x 6 x 2

*Hole in one*

1992

Basket woven of shredded money  
4¼ x 3 x 2½

*Diamond Back*

1991

Basket woven of shredded money  
8 x 6 x 1½

*Look again*

1991

Basket woven of shredded money  
7¼ x 4¼ x 1½

*The Green and the Grey*

1991

Basket woven of shredded money  
7¼ x 4¼ x 2½

*Changed Purse*

1989

Basket woven of shredded money  
5¼ x 3 x 2

*Untitled*

1988

Basket woven of shredded money  
6¼ x 2 x 3

*Here we go loop de Lou*

1988

Basket woven of shredded money  
7 x 2½ x 2½

*Diamond Five*

1992

Basket woven of shredded money  
7½ x 4 x 2

*Tens and Twills II*

1988

Basket woven of shredded money  
7½ x 6 x 2

*This note*

1988

Basket woven of shredded money  
6½ x 6 x 2

**Marion Munk**

*Untitled*

Eleven (11) porcelain cups or mugs  
Approx. 4 x 5¼ x 4 each

**Damita-Jo Nicholson**

*Beaded Bib*

1993

Safety pins and beads  
18 x 14

*Beaded Belt*

1993

Safety pins and beads  
15 x 23

*Jeweled Cross*

1993

Safety pins and decorative stones  
7 x 3¼

*Earrings*

1992

Safety pins and beads  
2 x 2½

*Bare Nile, Bib*

1992

Safety pins and metal beads  
23 x 6

*Bracelet*

1993

Safety pins and metal beads  
8 x 1

*Chain Mail Tunic*

1993

Safety Pins  
38 x 18

**Mark Sharrock**

*Birch Rocker with Shaker Tape*

1993

Wood and cotton  
40 x 24 x 20

*Child's Birch Rocker with Shaker Tape*

1993

Wood and cotton  
24 x 16 x 16

*Chair with Ash Splint*

1993

Wood  
36 x 16 x 16

*Chair with Ash Splint*

1993

Wood  
36 x 16 x 16

*Coffee Table*  
1993  
Wood  
20 x 18 x 48

*Chair*  
1991  
Wood and Rush  
38 x 18 x 16

*Bench*  
1993  
Wood  
40 x 47 x 20

*Side Table*  
1993  
Wood  
24 x 24 x 19

### Marjorie Simon

*Amulet/Neckpiece*  
1993  
Sterling silver, assorted semi-precious stones and broken car glass amulet  
5 ¼ x 1 ¼ x ¼

*Urban Charms Necklace I*  
1993  
Sterling silver, assorted semi-precious stones, vermeil, broken car glass and Alaskan walrus ivory  
40" length

*Urban Charms Necklace II*  
1993  
Sterling silver, assorted semi-precious stones, rusted steel, vermeil and broken car glass  
40" length

*Urban Detritus Pin I*  
1993  
Sterling silver, rusted steel, alternative ivory  
4 ¼ x ½ x ½

*Urban Detritus Pin II*  
1993  
Sterling silver, rusted steel, broken car glass and rutilated quartz  
4 x ½ x ½

*Necklace*  
1993  
Sterling silver, epoxy resin, assorted semi-precious stones, rubber and carved acrylic  
dimensions variable

*Pin*  
1993  
Sterling silver, broken car glass, gold leaf and crystal  
4 x 1 x ¼

*Urban Detritus Necklace I*  
1993  
Sterling silver, rusted steel, Chinese turquoise, amethyst, rubber and magnets  
Pendant 6 x 2

*Urban Detritus Necklace II*  
1993  
Sterling silver, rusted steel, broken car glass, rubber, hematite and 14K gold  
Pendant 6 x 1

### Pete Tischler

*Roth Table*  
1993  
Walnut  
29 x 64 x 16

*Pedestal Table*  
1992  
Quilted maple cherry  
32 x 18 x 16

*Ash Armchair*  
1992  
White ash  
28 ½ x 22 ¼ x 20

*Birdseye Maple Armchair*  
1992  
Bird's-eye maple  
40 x 25 x 20

*Fullerton Hall Table*  
1993  
Silver maple and ebonized hardwoods  
33 x 33 x 13

*Fallen Log Coffee Table*  
1993  
Walnut  
16 x 57 x 34

BIOGRAPHIES

**Ina S. Chapler**

Born 1933  
Jersey City, NJ  
Lives and works in Englewood Cliffs, NJ

**EDUCATION**

Pratt Institute, Brooklyn, NY  
Monterey Peninsula College,  
Monterey, CA  
Greenwich House Pottery,  
New York, NY  
Penland School of Crafts, Penland, NC

**SELECTED EXHIBITIONS**

1991 *21st Annual Peters Valley Crafts Fair*,  
Layton, NJ  
1990 *In Search of Excellence*, New Jersey  
Designer-Craftsmen, New Brunswick, NJ  
1990 Green Meadow Waldorf School,  
Spring Valley, NY  
1989 *New Jersey Arts Annual: Clay & Glass*,  
The Newark Museum, Newark, NJ  
1989 New Jersey State Council on the  
Arts - *1989 Fellowship Exhibition*, The Noyes  
Museum, Oceanville, NJ  
1988 *14th Annual Invitational Pottery Show*,  
Demarest, NJ  
1988 *26th Contemporary Crafts Exhibition*,  
Delaware Art Museum, Wilmington, DE  
1988 *New Jersey Arts Annual: Clay and  
Glass*, The Montclair Art Museum,  
Montclair, NJ

**Mark W. Forman**

Born 1939  
Queens, New York  
Lives and works in Mt. Laurel, NJ

**EDUCATION**

Wagner College, Staten Island, NY, B.A.  
Rutgers University, New Brunswick,  
NJ, M.A.

**SELECTED EXHIBITIONS**

Peters Valley Craft Center, Layton, NJ  
The El Paso Museum, El Paso, TX  
Philadelphia Art Alliance,  
Philadelphia, PA  
Cooper-Hewitt Museum, New York, NY  
Rutgers University Gallery, Camden, NJ  
The Noyes Museum, Oceanville, NJ  
Montclair State College, Montclair, NJ  
Delaware Art Museum, Wilmington, DE  
The Newark Museum, Newark, NJ

**Don Manuel Gonzalez**

Born 1949  
Pittsburgh, PA  
Lives and works in Stockton, NJ

**EDUCATION**

University of Pittsburgh, Pittsburgh, PA,  
B.A., English Literature and Studio Arts  
Carnegie Mellon University, Pittsburgh,  
PA, Glassblowing under the direction of  
Boris Dudchenko and Jan Zandhuis  
Sausalito Art Center, Sausalito, CA,  
Glassblowing in a cooperative glass  
studio under the direction of Samantha  
Hawley

**SELECTED EXHIBITIONS**

1993 Holsten Gallery, Stockbridge, MA  
1993 Creative Glass Center of America,

Wheaton Village, Milledale, NJ

1992 *Arts Annual: Crafts*, New Jersey State  
Museum, Trenton, NJ  
1991 Genest Gallery, Lambertville, NJ,  
Group Exhibition  
1991 *In Our Circle*, Michener Art Center,  
Doylestown, PA,  
1989 *Philadelphia Craft Show*, Civic  
Center, Philadelphia, PA  
1987 *New Jersey Arts Annual: Clay and  
Glass*, The Montclair Art Museum,  
Montclair, NJ  
1987 Rosenfeld Gallery, Delaware  
Valley Glass  
1986 *Concept Design*, One person show,  
Lambertville, NJ  
1986 *In Recognition of Excellence*, The  
Montclair Art Museum, Montclair, NJ

**John F. Graney**

Born 1953  
New York, NY  
Lives and works in Garwood, NJ

**EDUCATION**

South West Wisconsin Voc/Tech.  
College, Fennimore, WI  
University of Wisconsin, Madison, WI  
Kalamazoo College, Kalamazoo, MI

**SELECTED EXHIBITIONS**

1993 *Living With Crafts*, New Jersey  
Designer-Craftsmen, New Brunswick, NJ  
1993 *Table of Contents*,  
Englewood Cliffs, NJ  
1993 Peters Valley Crafts Center  
Gallery, Layton, NJ  
1993 *Topeo*, New Hope, PA  
1993 *East Bay Gallery*, Charleston, SC

1992 Kornbluth Gallery, Fairlawn, NJ  
1992 A.C.E., Exposition Center, West  
Springfield, MA  
1992 A.C.E. *Winterfair*, Inner Harbour  
Convention Center, Baltimore, MD  
1990 *Washington Crafts Show*, Smithsonian  
Institution, Washington, DC  
1991 *Lincoln Center Crafts Show*, Lincoln  
Center, New York, NY  
1991 O.D.C. *Winterfair*, State Fair  
Grounds, Columbus, OH

### John Hein

Born 1955  
Albany, NY  
Lives and works in Trenton, NJ

### EDUCATION

Temple University, Philadelphia, PA,  
B.A., English

### SELECTED EXHIBITIONS

1993 *New Jersey Crafts: Present & Future*,  
Johnson & Johnson World Headquarters,  
New Brunswick, NJ  
1993 *John Hein*, (solo exhibit), The Finer  
Side, Salisbury, MD  
1993 *The New Classics*, Maryland  
Historical Society, Baltimore, MD  
1993 *John Hein: New Work*, (solo exhibit),  
Meredith Gallery, Baltimore, MD  
1992 *John Hein: New Furniture*,  
(solo exhibit), The Newark Museum,  
Newark, NJ  
1992 *New Jersey Arts Annual: Crafts*, New  
Jersey State Museum, Trenton, NJ  
1992 *Celebration of American Crafts*,  
Creative Arts Workshop,  
New Haven, CT

1992 *Sculptural Furniture*, Snyderman  
Gallery, Philadelphia, PA  
1991 *New Jersey Arts Annual: Crafts*, The  
Morris Museum, Morristown, NJ  
1991 *Trenton Artists Workshop Association:*  
*New Members Exhibit*,  
Trenton City Museum, Trenton, NJ  
1990 *New Jersey Arts Annual: Crafts*, The  
Noyes Museum, Oceanville, NJ

### Lisa Kavalos

Born 1964  
New Brunswick, NJ  
Lives and works in Elberon, NJ

### EDUCATION

Cooper Union, New York, NY, B.F.A.,  
Sculpture

### SELECTED EXHIBITIONS

1992 *New Jersey Arts Annual: Crafts*, New  
Jersey State Museum, Trenton, NJ

### Kenneth Calum MacBain

Born 1963  
Westwood, NJ  
Lives and works in Norwood, NJ

### EDUCATION

Tyler School of Art, Temple University,  
Philadelphia, PA, M.F.A., Metals  
State University of New York at New  
Paltz, B.F.A., Gold and Silversmithing

### SELECTED EXHIBITIONS

1992 *Metals Now 1992*, Downey Museum  
of Art, Downey, CA  
1992 Westchester Community College/  
Westchester Art Workshop Faculty  
Exhibition, Westchester County Gallery  
1991 *The Dining Experience: A Craft  
Expression*, Luckenbach Mill Gallery,  
Bethlehem, PA  
1991 Westchester Community College/  
Westchester Art Workshop Faculty  
Exhibition, Westchester County Gallery  
1991 *Small Works Exhibition*, Old Church  
Cultural Center, Demarest, NJ  
1991 *Signs of Personality*, Schwabisch  
Gmund, West Germany  
1990 *Form in the Form*, Erbach,  
West Germany  
1990 *Metals Now*, Downey Museum of  
Art, Downey, CA  
1989 *Conversations '89*, New Paltz Gallery,  
New Paltz, NY

### Zoe Morrow

Born 1955  
Camden, NJ  
Lives and works in Pennsauken, NJ

### EDUCATION

Moore College of Art, Philadelphia, PA,  
B.F.A., Textile Arts

### SELECTED EXHIBITIONS

1993 *Baskets*, Mobilia Gallery,  
Cambridge, MA  
1992 Solo Show of Baskets at Federal  
Reserve Board, Martin Building,  
Washington, DC



1992 *Outer/Inner Space. A Basket Invitational*,  
Pro-Art Gallery,  
St. Louis, MO  
1992 *New Jersey Arts Annual: Crafts*, New  
Jersey State Museum, Trenton, NJ  
1992 *The 3rd Annual Basketry Invitational*,  
The Sybaris Gallery, Royal Oak, MI  
1991 *The Collector's Eye*, auction to  
benefit the American Craft Museum,  
New York, NY  
1991 *Basketry: From All Directions*,  
Arrowmont School, Gatlinburg, TN  
1991 Metropolitan Home Showhouse 2,  
Daniel Mark/Bennett Bean room  
(a benefit for DIFFA) New York, NY  
1990 *Insight: Basketry for the 90's*- Clay &  
Fiber Gallery, Taos, NM  
1990 *Basketweave '90* - The Dairy Barn,  
Athens, OH

#### Marion Munk

Born 1937  
Forest Hills, NY  
Lives and works in Piscataway, NJ

#### EDUCATION

Rutgers University, New Brunswick, NJ,  
M.F.A., Ceramics  
Douglass College, Rutgers University,  
B.A., Studied with Ka Kwong Hui  
Mason Gross School of the Arts,  
Rutgers University  
Independent research project with  
Ka Kwong Hui  
The Brooklyn Museum School,  
Brooklyn, NY  
Studied with Arthur Floyd

#### SELECTED EXHIBITIONS

1993 Porcelain Mug Exhibition, Vienna,  
Frankfort & Dubi, Czech Republic  
1992 *The New Jersey Project Invitational: A  
Celebration of Women Artists at New Jersey  
Colleges*, Robeson Center Gallery, Rutgers  
University, New Brunswick, NJ  
1989 Taller Cultural, Santiago de Cuba,  
Cuba  
1987 *New Inventions in Crafts*, Johnson &  
Johnson International Headquarters,  
New Brunswick, NJ  
1987 Gallery "D", Prague, CSSR  
1987 Edison Hall Gallery, Middlesex  
County College, Edison, NJ  
1986 Ales South Bohemian Gallery,  
Bechyne, CSSR  
1986 International Ceramic Museum,  
Bechyne, CSSR  
1986 Lee Sclar Gallery, Morristown, NJ

#### Damita-Jo Nicholson

Born 1953  
Atlantic City, NJ  
Lives and works in Atlantic City, NJ

#### EDUCATION

Marie McCollough School of Modeling,  
Atlantic City Models Guild,  
Atlantic City, NJ  
International Fine Arts College of  
Fashion, Miami, FL  
Casino Career Institute, Atlantic  
Community College, Atlantic City, NJ

#### SELECTED EXHIBITIONS

1993 Virginia Beach Art Show on  
Boardwalk, Virginia Beach, VA  
1993 Oregon School of Arts and Crafts  
Show, Portland, OR  
1993 New Jersey Designer Craftsmen,  
New Brunswick, NJ  
1992 The Peninsula Fine Arts Center,  
Newport News, VA  
1991 Lincroft Gallery, Lincroft, NJ  
1990 The Noyes Museum, Lily Lake, NJ  
1990 Monmouth Museum, Lincroft, NJ  
1990 Virginia Beach Art Show,  
Virginia Beach, VA  
1989 The Peninsula Fine Art Center,  
New Port News, VA  
1987 Swan Gallery, Philadelphia, PA

#### Mark Sharrock

Born 1949  
Jersey City, NJ  
Lives and works in Jersey City, NJ

#### SELECTED EXHIBITIONS

1993 Peters Valley Craft Fair,  
Layton, NJ  
1993 Bloomingdale's Spring Show,  
Hackensack, NJ  
1993 A. J. Lederman Gallery,  
Hoboken, NJ  
1993-92 Hand-Mad Gallery,  
Hoboken, NJ  
1992 Adirondack Museum,  
Blue Mountain Lake, NY  
1992 Monroe Village Museum,  
Monroe, NY

**Marjorie Simon**

Born 1945  
Philadelphia, PA  
Lives and works in Highland Park, NJ

**E D U C A T I O N**

Parsons School of Design,  
New York, NY  
Bryn Mawr College, Bryn Mawr,  
PA, M.A.  
Connecticut College, B.A.

**S E L E C T E D E X H I B I T I O N S**

1992 *Forged and Fired*, Invitational Juried Show, National Ornamental Metal Museum, Memphis, TN  
1992 *A Salute to New England Craft and Design*, The Society of Arts and Crafts, Boston, MA  
1992 *Newport Harbor Art Museum Artisans Showcase*, Newport Beach, CA  
1992 Morristown Craftmarket, Morristown, NJ  
1992 Crafts at the Castle, Boston, MA  
1991 *New Work by A/K/A '92*, Invitational, Contemporary Crafts Gallery, Portland, OR  
1991 *New Jersey Arts Annual: Crafts*, The Morris Museum, Morristown, NJ  
1990 *Metal Media*, Sawtooth Center for Visual Design, Winston-Salem, NC  
1990 *Materials Hard and Soft*, Greater Denton Arts Council, Denton, TX  
1990 *National Metals Invitational*, Galeria Mesa, AZ  
1990 *40 Years of New Jersey Designer Craftsmen*, Invitational, The Newark Museum, Newark, NJ

**Pete Tischler**

Born 1960  
Orange, NJ  
Lives and works in Caldwell, NJ

**E D U C A T I O N**

North Bennett Street School, Cert. in Cabinetmaking  
University of Rhode Island, B.S., Natural Resources

**S E L E C T E D E X H I B I T I O N S**

1993 Prallsville Mill, Stockton, NJ  
1993 The Berkshire Museum, Pittsfield, MA  
1993 Worcester Center for Crafts, Worcester, MA  
1993 Fuller Museum of Art, Brockton, MA  
1993 *New Faces '93*, American Craft Council, Baltimore, MD  
1991-1993 New Jersey Designer Craftsmen, New Brunswick, NJ  
1992 New Jersey State Museum, Trenton, NJ  
1992 Peters Valley Craft Center, Layton, NJ

JERSEY CITY MUSEUM

Main Library Building  
472 Jersey Avenue  
Jersey City, New Jersey 07302