

New Jersey Arts Annual:
Crafts



EVERYTHING FOR THE HOME

T h e M o r r i s M u s e u m



NEW JERSEY
STATE
COUNCIL
ON THE
ARTS

Funding for this exhibition has been made possible in part by funds from the New Jersey State Council on the Arts/Department of State, a Partner Agency of the National Endowment for the Arts.

All photography courtesy of the artists

Catalogue Design: Meredith Neumann

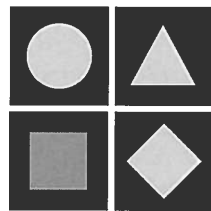
© 2000 The Morris Museum
6 Normandy Heights Road
Morristown, NJ 07960



Cover:
Nina Pellegrini
Dog Compote, 1999
Clay
7 x 9 inches

New Jersey Arts Annual:
Crafts

EVERYTHING FOR THE HOME



T h e M o r r i s M u s e u m

August 13 - November 12, 2000

New Jersey Arts Annual

New Jersey Arts Annual is a unique series of exhibitions highlighting the works of visual artists and craftspeople in the state. Two exhibitions take place each year in alternating sequence: Fine Arts in spring/summer, Crafts in fall/winter. This series of exhibitions is co-sponsored by the New Jersey State Council on the Arts/Department of State, Jersey City Museum, The Montclair Art Museum, The Morris Museum, The Newark Museum, New Jersey State Museum and The Noyes Museum of Art.

2

Upcoming exhibitions are:

Spring 2001 Fine Arts

The Noyes Museum of Art

Fall 2001 Crafts

New Jersey State Museum

Sales

Many of the works in this exhibition are for sale. Inquiries should be directed to the Admissions Desk of The Morris Museum.

State of New Jersey

The Honorable Christine Todd Whitman,
Governor

New Jersey State Council on the Arts

Leonard M. Fisher, Esq.
Chairman

Germaine B. Trabert
Vice-Chairman

Kenneth J. Endick, Esq.
Vice-Chairman

Agnes O. Armao, Ph.D.
Nicholas Asselta, Assemblyman, Ex-Officio
Lawrence K. Carlbon

Elizabeth G. Christopherson
Arthur Factor

Cynthia King Harkins, Esq.
Dolores A. Kirk

Penelope E. Lattimer, Ph.D.
Lillian Levy

Alexander J. Menza
DeForest B. Soaries, Jr., Secretary of State, Ex-Officio

Judith H. Stanley
Dana Dowd Williams

Barbara F. Russo
Executive Director

David A. Miller
Deputy Executive Director

Tom Moran
Senior Program Officer, Visual Arts

The Morris Museum Board of Trustees 2000-2001

Peter V. Mancuso, *Chairman*
Mary Chandor, *First Vice President*
Patricia Maynard, *Second Vice President*
Paul J. Laud, *Treasurer*
William Gilroy, *Assistant Treasurer*

Philip L. Anderson
William Blatt
Blair A. Boyer
Carl Braunschweiger
S. Jervis Brinton, Jr.
Austin R. Bush
Joseph V. Calvanelli, Jr.
Michelle Davis
Linda Dawson
Robert J. DiQuollo
Roger Ford
Ruth Hennessy
Bernadine Hines

Gerri Horn
Lois Johnson
Enid Kinney Ex-Officio
Anu Lacis
Carol Macgowan Ex-Officio
Michael P. Miller
Carol J. Murphy
Abby O'Neill
Fred H. Rohn
Catherine Sandbach
Nelson Schaenen, Jr.
Richard T. Sparks
Sheila Stephenson
Nan Thomson
Jane Tiger
Norman Tregenza
Robert Turnquist
Richard A. Watson
Jan Rock Zubrow

4

The Morris Museum Staff

Steven Klindt, *Executive Director*
Erin Dougherty, *Assistant Director for Programs*
Christine Moss-Lassiter, *Assistant Director for Administration*
Paula Hunchar, *Director of Development*
Walker Joyce, *Artistic Director, The Bickford Theatre*
Margery Reich, *Curator of Collections*
Meg Poltorak, *Exhibition Designer*
Kathy Sutherland, *Membership and Volunteer Coordinator*
Judith Altman, *Outreach Educator*
Janet Cantaffa, *Appointments Coordinator*
Joan Clarke, *School Loan Curator*
Anne Marie Cuskley, *School Loan Assistant*

Pat DeNegri, *Buildings and Grounds*
Sandra Miniutti, *Development Associate*
Meredith Neumann, *Graphic Designer*
Leonard Pavia, *Building and Grounds*
Lewis Perlmutter, *Technical Coordinator*
Toni Setteducato, *Museum Educator*
Laurel Smith, *Theatre Manager*
Eve Stamato, *Museum Educator*
Jan Steinhauer, *Administrative Assistant*
Peter Stevens, *Buildings and Grounds*
Ruth Zippler, *Museum Shop Manager*

New Jersey Department of State

On behalf of Governor Christine Todd Whitman and the State of New Jersey, I am pleased to congratulate the artists featured in this year's *New Jersey Arts Annual: Crafts: EVERYTHING FOR THE HOME*.

The creative work and accomplishments of these artists are indicative of the vibrancy and exceptional artistic talent in New Jersey today. This exhibition of their work reminds us of the important partnership forged by the New Jersey State Council on the Arts and six of the state's leading museums in the creation of the *New Jersey Arts Annual* exhibition series. Since the first Arts Annual at The Morris Museum 15 years ago, the succeeding exhibitions have provided over eleven hundred artists, many for the first time, with the opportunity to have their works exhibited in a fine art museum.

By drawing on the expertise and resources of The Morris Museum, New Jersey State Museum, The Noyes Museum of Art, The Newark Museum, The Montclair Art Museum, and Jersey City Museum, the *New Jersey Arts Annual* exhibitions have come to be recognized as important displays of talent in the mid-Atlantic region of the nation.

5

The Department of State and the New Jersey State Council on the Arts are proud of our involvement in this program and are particularly grateful for the contributions made this year by The Morris Museum. With the on-going commitment by the Council and its museum co-sponsors, the *Arts Annual* continues to attain the highest levels of artistic excellence.

I thank the artists, the curator and director, and all of the fine professionals of The Morris Museum whose hard efforts produced this special and memorable exhibition.

DeForest B. Soaries, Jr.
Secretary of State

New Jersey State Council on the Arts

The New Jersey State Council on the Arts is proud to co-sponsor the *New Jersey Arts Annual: Crafts: EVERYTHING FOR THE HOME* at The Morris Museum. The Council and its six New Jersey museum partners: The Newark Museum, the New Jersey State Museum, The Noyes Museum of Art, The Montclair Art Museum, Jersey City Museum and The Morris Museum are committed to the important opportunities provided to artists and the public by the *Arts Annual* exhibitions. Each year, two exhibitions, one featuring crafts and the other fine arts, present some of the most exciting work being done in New Jersey. These exhibitions are seen by a multitude of viewers and provide a meaningful look at the wide range of creativity in the crafts and the fine arts statewide. In the fall of 1985, The Morris Museum hosted the very first *Arts Annual* exhibition titled *Clay and Glass*. Now, fifteen years later, the *Arts Annual* exhibition series has returned to The Morris Museum, marking an important milestone in the history of the exhibition as it enters the new millennium.

6

The Council wishes to acknowledge and thank all of the exhibiting artists whose exceptional works are indicative of the diversity and breadth of activity in New Jersey. We also thank Margery Reich, The Morris Museum's Curator of Collections for her expertise and unique viewpoints that give us an inspiring exhibition thematically based on functional and suitable works for the home. She and certainly The Morris Museum's Executive Director, Steven Klindt, the Board of Trustees and the professional staff deserve our extended thanks and appreciation for their commitment to ensuring the success of this exhibition.

Leonard M. Fisher
Chairman

Barbara F. Russo
Executive Director

Tom Moran
Senior Program Officer, Visual Arts

Director's Statement

The Morris Museum is pleased to present the *New Jersey Arts Annual: Crafts*. This year we have established the theme of *EVERYTHING FOR THE HOME* as the foundation for the Arts Annual. I would particularly like to thank and recognize Margery Reich, Curator of Collections at The Morris Museum for the expertise and unique vision that she brought to selecting the works for this exhibition. The Morris Museum has a rich history of presenting the work of contemporary New Jersey craftspeople, and our permanent collection reflects a comprehensive record of that commitment. The works in our collection will long stand as a document to a state dedicated to artistic expression through contemporary crafts.

On behalf of The Morris Museum, I extend our appreciation to the New Jersey State Council on the Arts for continuing to support this important exhibition series and for their ongoing support of The Morris Museum and its programs.

Congratulations and thank you to the 23 artists whose work has been selected for this year's exhibition. Their talent, creativity and assistance is deeply appreciated.

Steven Klindt, *Executive Director*

The Morris Museum

August 2000



Olga Mercedes Bautista



Sandra Benscoter

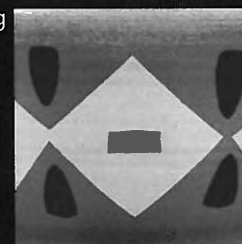


Linda Rae Coughlin

Catherine Dunning



Frank Bosco



Leslie Nobler Farber

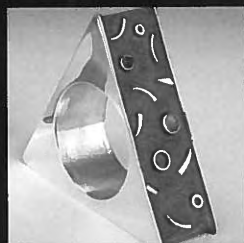
Jo

P a r t i c i p a t i



Paula Marino

Nina Pellegrini



Kenneth C. MacBain



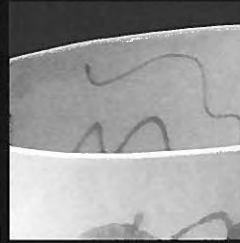
William McCreath



Franc Palaia



Terri Gelenian-Wood



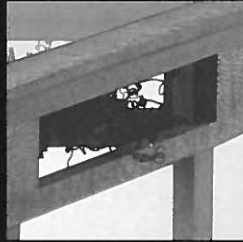
Ingrid Jordan



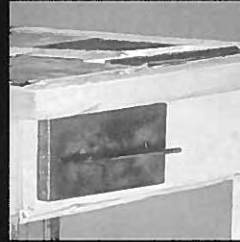
Betsy King



Louis Fulwood



Erik Johanson



Charles Kumnick

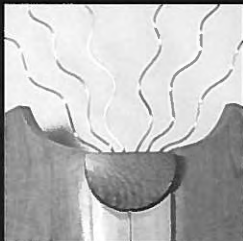
ng Artists



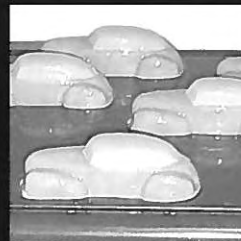
Andrea G. Raphael



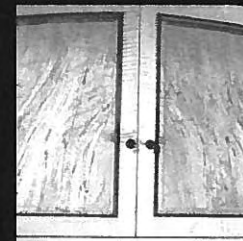
Eric Rhodes



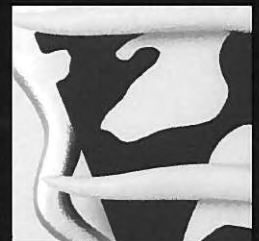
John D. Richie



Peter Tilgner



Peter Tischler



Stuart Topper



Olga Mercedes Bautista

Jar Numero Ocho, 1998

Earthenware

6 x 6 inches

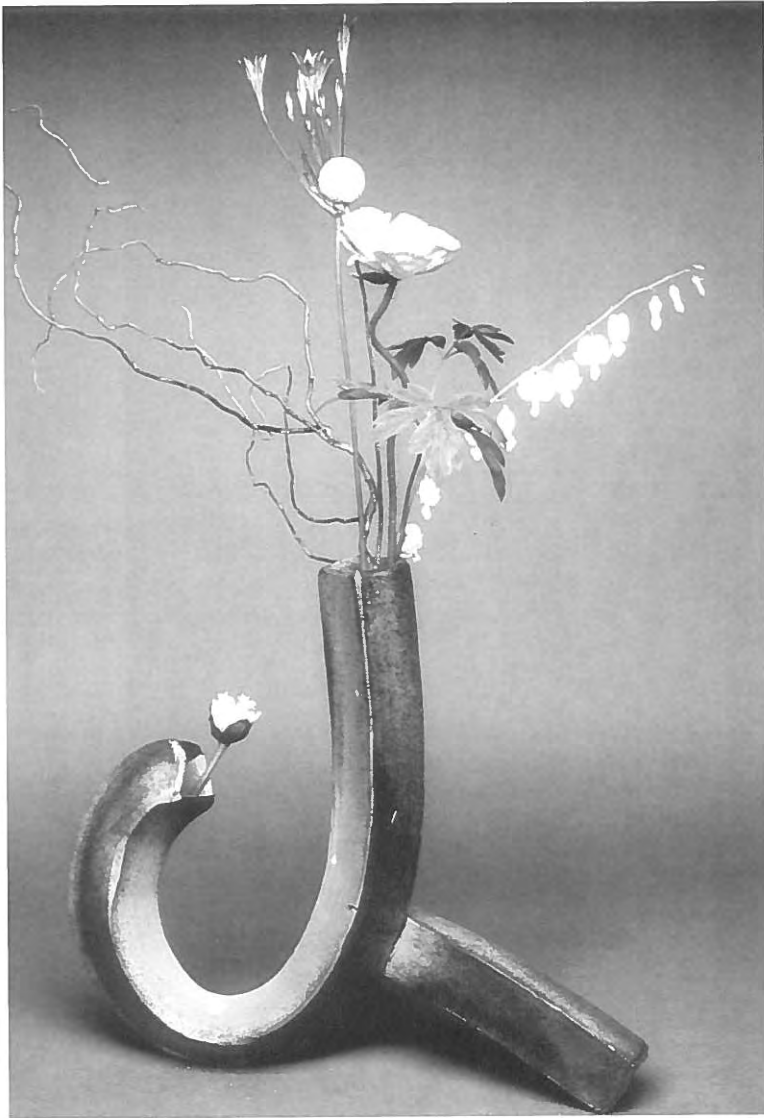


Sandra Benscoter

The Vasty Deep, 1999

Ceramic, raku

7 x 7 x 4 1/2 inches



Frank Bosco

Vase, 1999

Stoneware

13 1/2 x 16 1/2 x 10 inches



Linda Rae Coughlin

Standing Naked, 1999

Fiber

48 x 24 inches

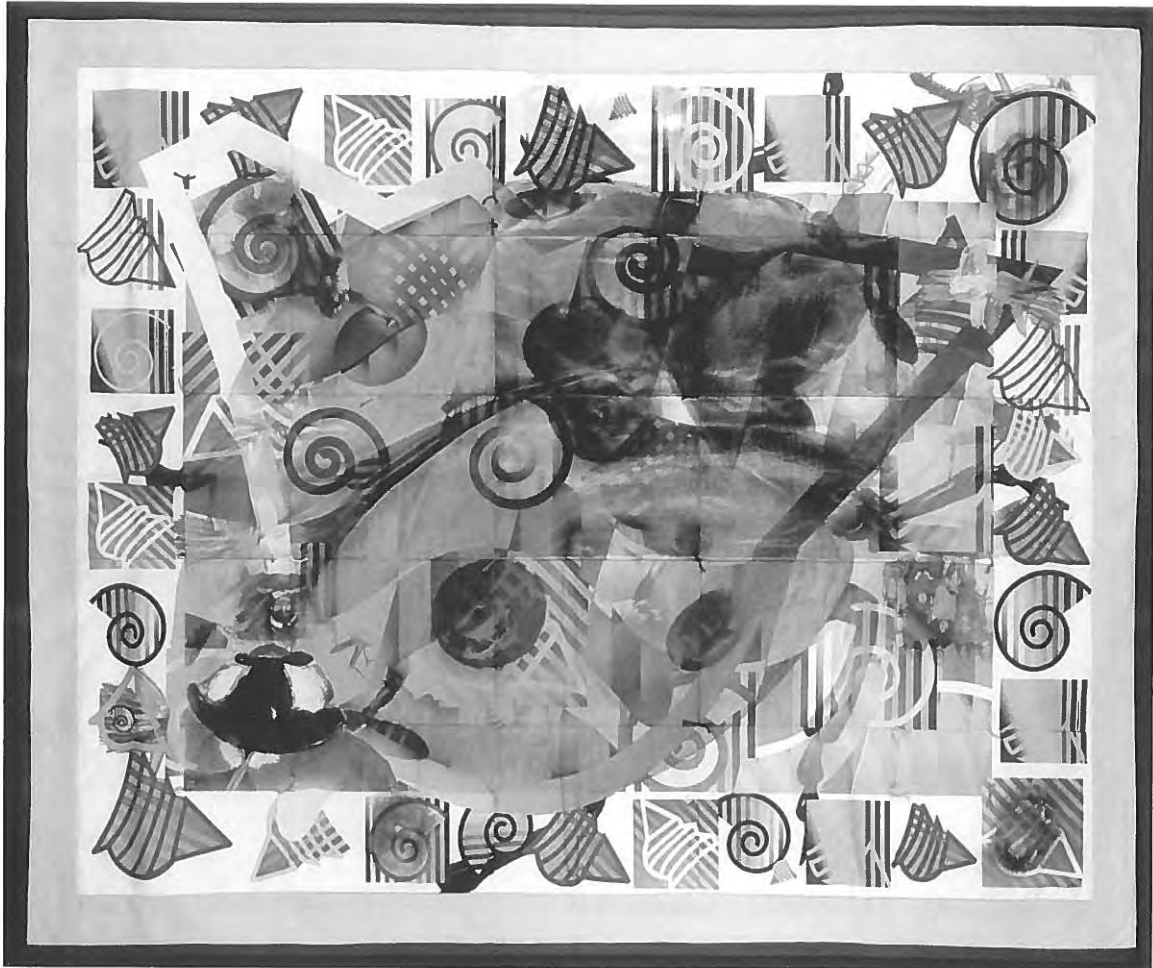


Catherine Dunning

Navajo Bowl, 2000

Earthenware

6 x 9 1/2 inches

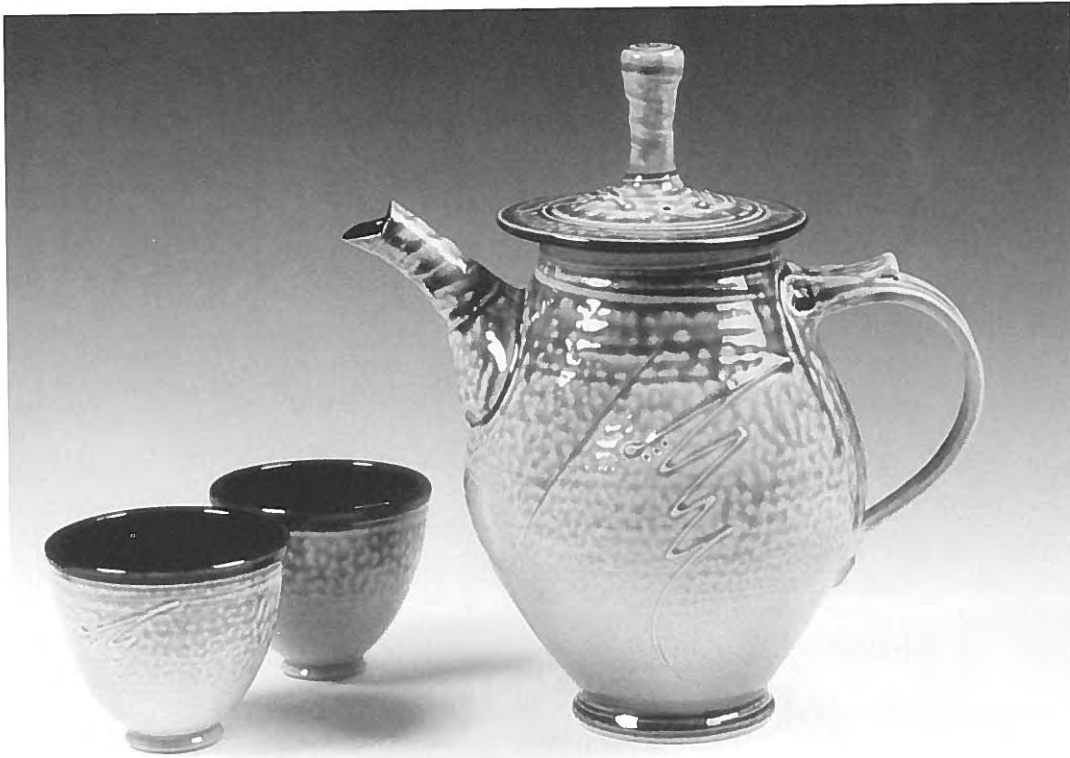


Leslie Nobler Farber

Scars from Spots, 1998

Mixed media

39 x 46 inches

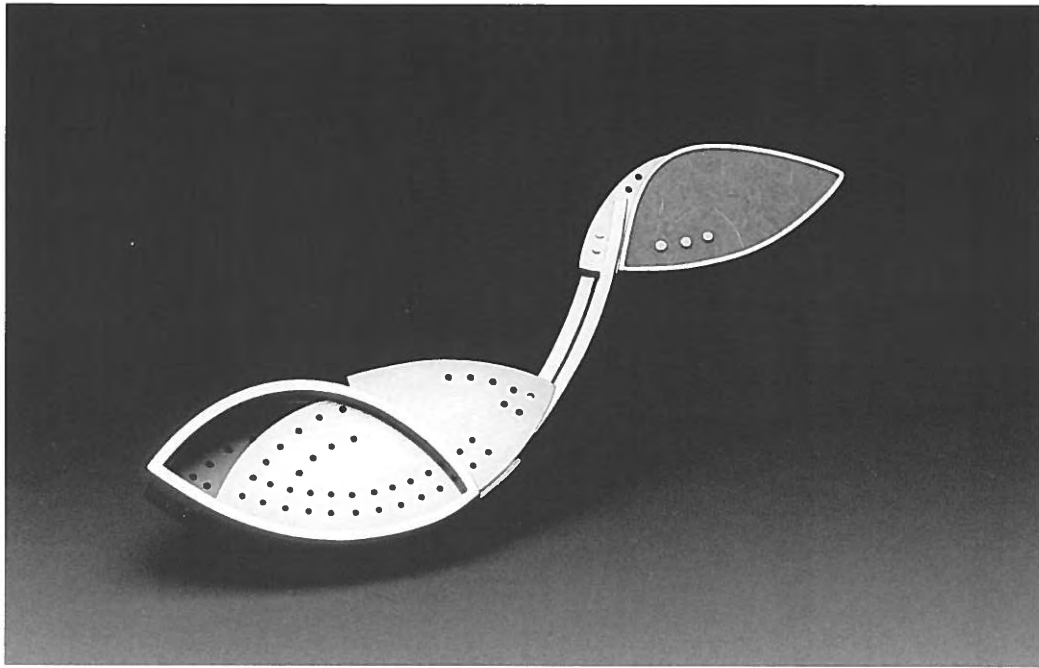


John Louis Fulwood

Tea Set, 2000

Ash glazed stoneware

9 x 9 inches

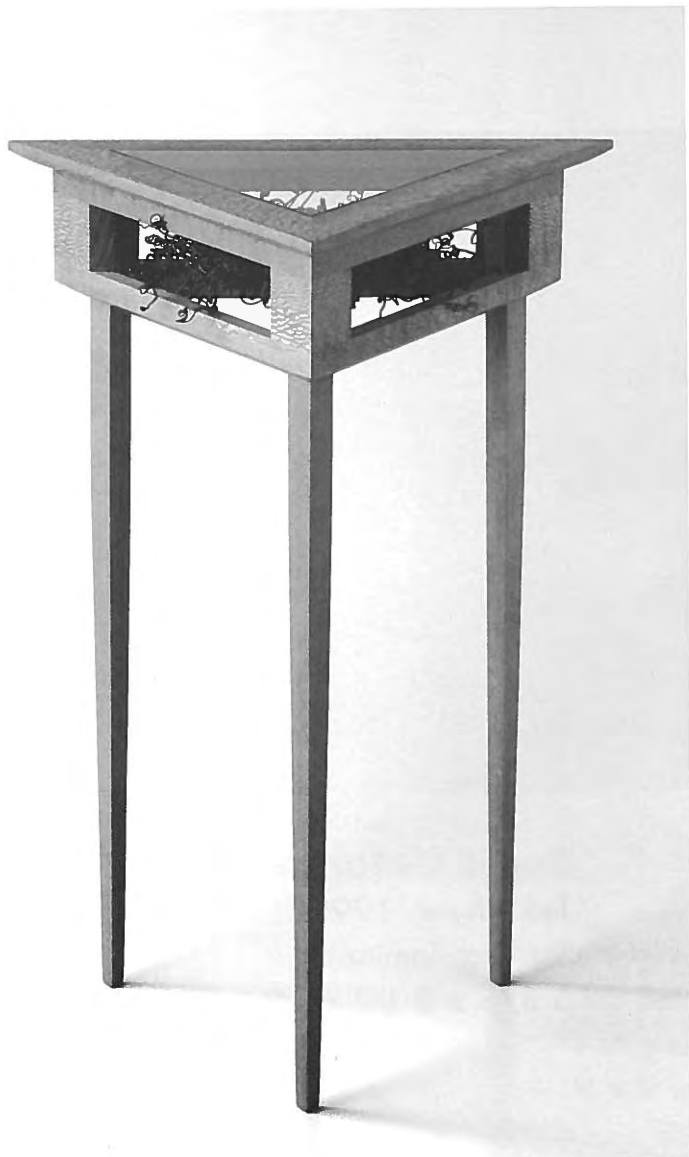


Terri Gelenian-Wood

Tea Infuser, 1999

Sterling, laminate

6 5/8 x 2 1/2 x 1/2 inches



Erik Johanson

Entwining, 1999

Wood

32 x 32 inches

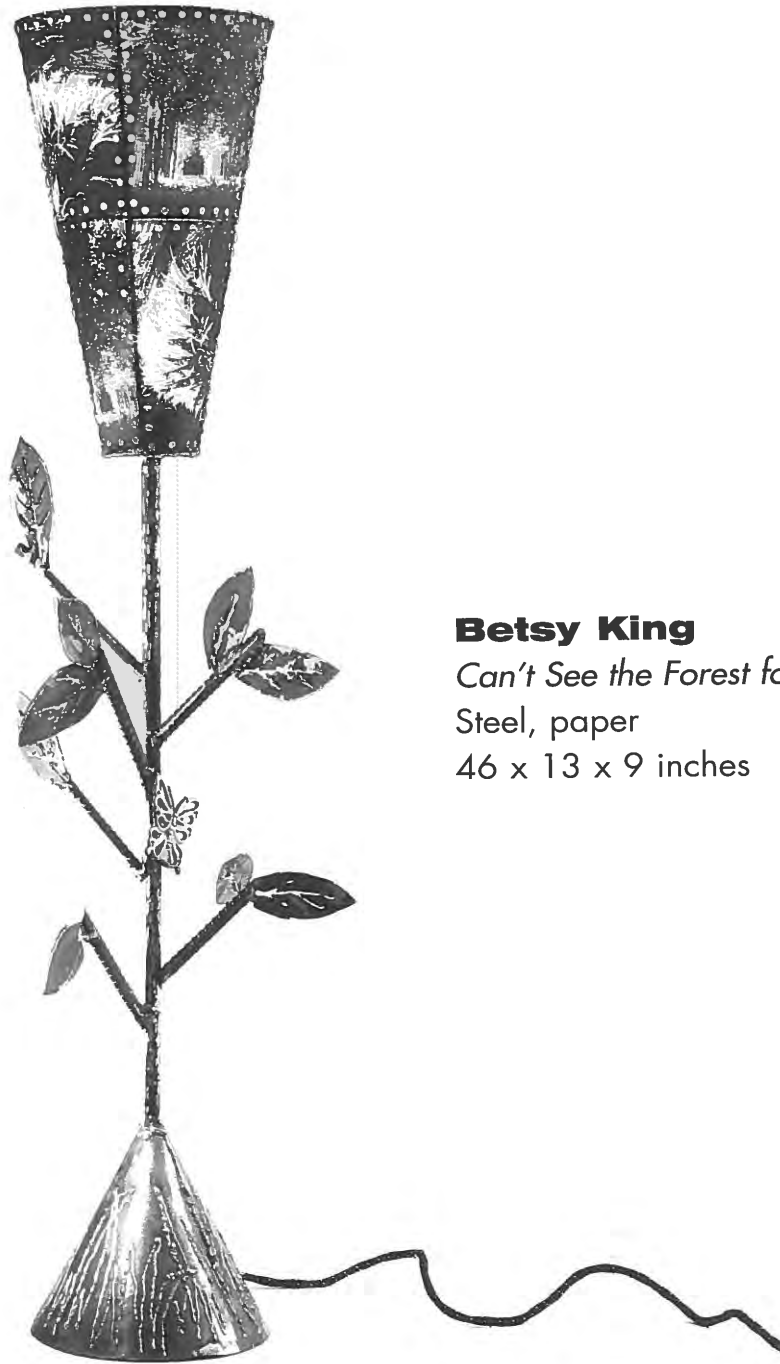


Ingrid Jordan

Footed Vessel, 1998

Clay

14 x 10 x 13 inches



Betsy King

Can't See the Forest for the Trees, 1999

Steel, paper

46 x 13 x 9 inches

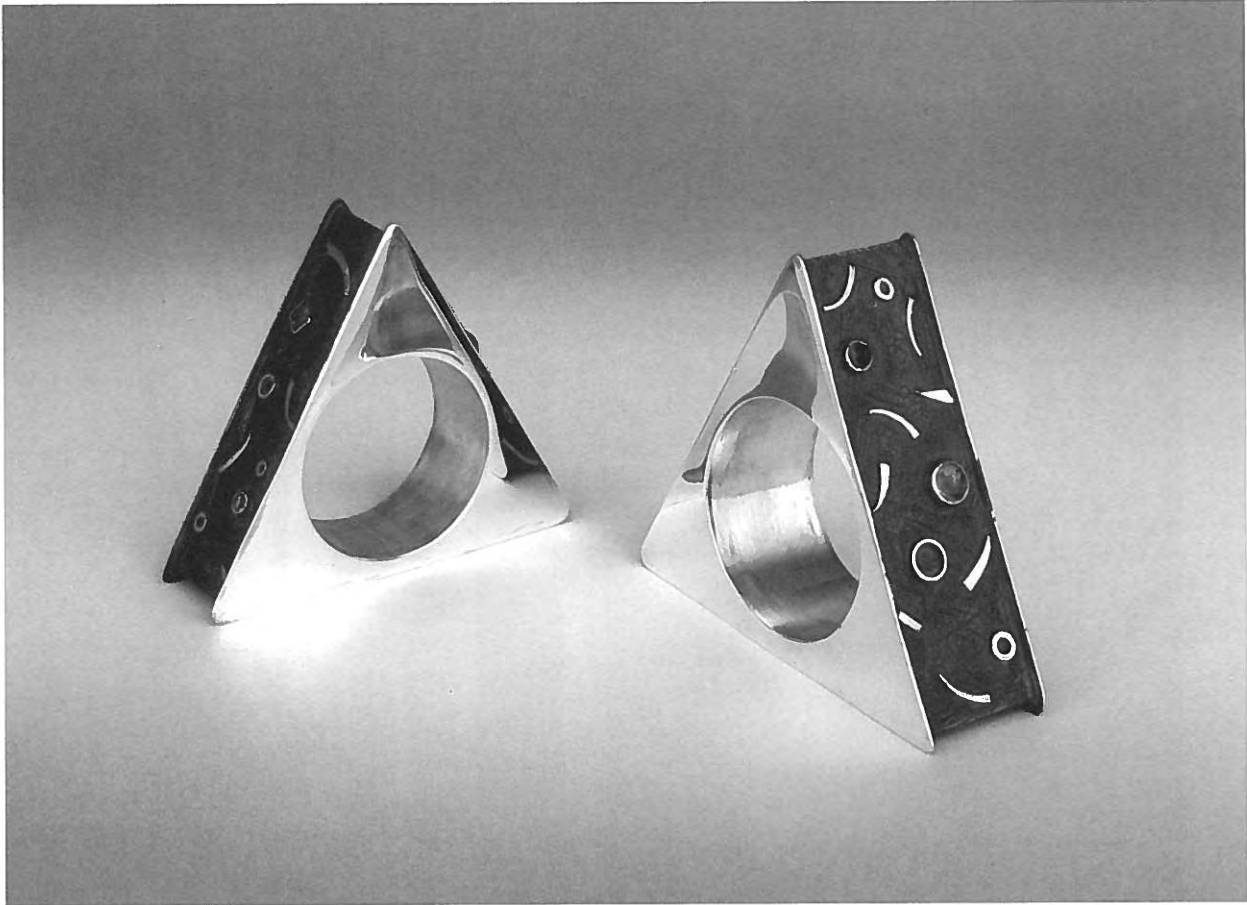


Charles Kumnick

Quilt, 1999

Oak, pine, steel

36 x 24 x 29 inches



Kenneth C. MacBain

Napkin Holders, 1999

Silver, 14K gold, citrine

2 1/2 x 2 1/2 x 2 1/2 inches



Paula Marino

Girlfriends #4, 1998

Gold leaf on byobu screens

60 x 24 inches



William McCreath

Vase Triste, 2000

Reduction fired stoneware

15 1/2 x 5 inches



Franc Palaia

Liberty, Iconic Lantern, 2000

Light, metal, plastic transparencies

14 x 6 x 5 inches



Nina Pellegrini

Dog Platter, 1999

Clay

9 1/2 x 12 inches



Andrea G. Raphael

Blue Box, 1998

Mixed media

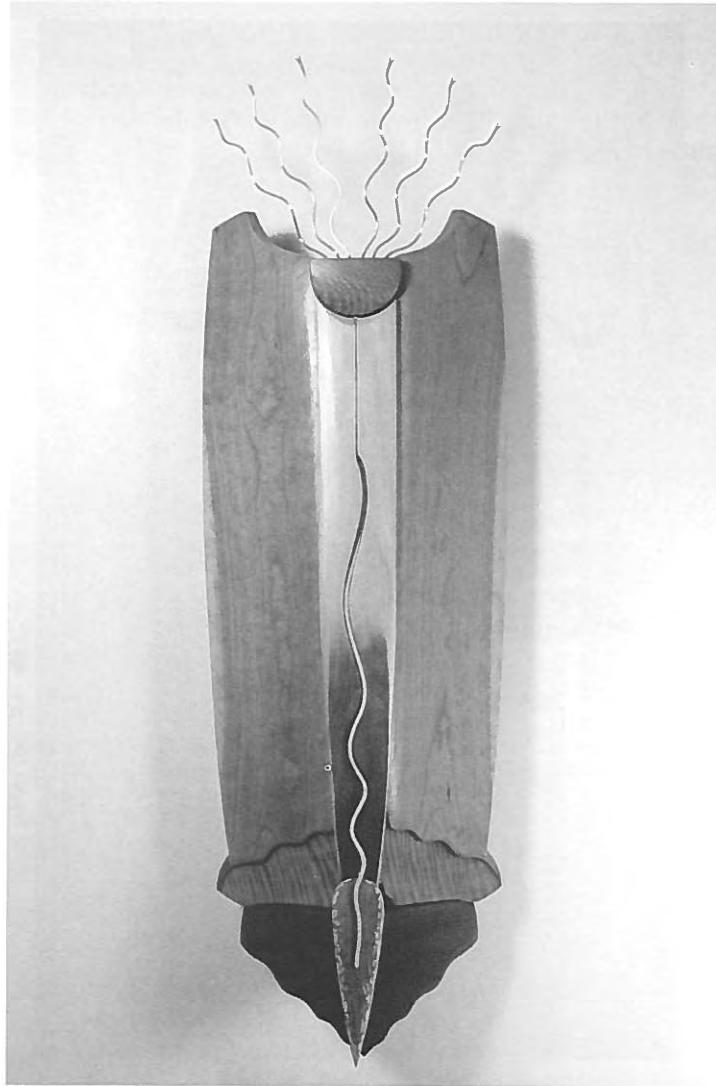
12 x 6 inches



Eric Rhodes

Chair, 1999

Steel armature,
polystyrene, fiberglass,
polyurethane finish
36 x 24 x 24 inches



John D. Richie
Wall Cabinet, 1999
Cherry, cedar, brass
48 x 20 x 12 inches



Peter Tilgner

Red Apple Rest, 1995

Mixed media

25 x 16 1/2 x 14 1/2 inches

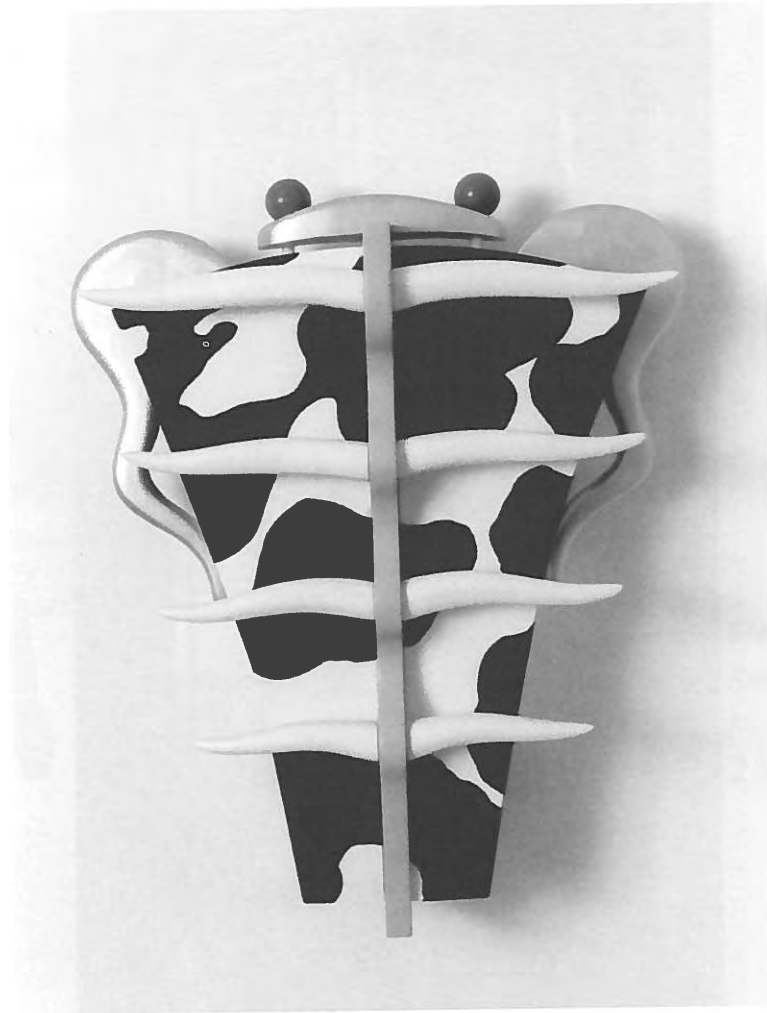


Peter Tischler

Highboy, 1997

Spalted maple

78 x 36 x 21 inches



Stuart Topper

The Cowbox, 1999

Mixed media

14 x 17 x 5 inches



E x h i b i t i o n

C h e c k l i s t

All works lent by the artists.

Measurements are in inches.



Olga Mercedes Bautista

South Amboy, NJ

Jar Numero Tres, 1998

Earthenware

6 x 6 inches

Jar Numero Ocho, 1998

Earthenware

6 x 6 inches

Olga Bautista received a BA from New Jersey City University. She is currently employed by W.C. McGinnis Public Middle School in Perth Amboy, NJ where she is an elementary school art teacher. Olga was awarded the Certificate of Appreciation by Bret Schundler, Mayor of Jersey City, for her work as a creative artist and for displaying tradition and culture.



Sandra Benscoter

Somerville, NJ

The Vasty Deep, 1999

Ceramic, raku

7 x 7 x 4 1/2 inches

Sandra Benscoter's formal education is in business. However, since 1990 she has studied and worked in ceramics, taking classes at Raritan Valley Community College in Somerville, NJ. Sandra's study and studio classes include Ceramics, Glaze, 2-D & 3-D Design, Drawing, and Independent Study/Ceramic Sculpture.

Exhibition Checklist



Frank Bosco

Millburn, NJ

Vase, 1999

Stoneware

6 x 12 x 4 inches

Vase, 1999

Stoneware

13 1/2 x 16 1/2 x 10 inches

Frank Bosco received a BA of Fine Arts from the Rhode Island School of Design in Providence, RI and obtained an MA of Fine Arts from Alfred University, College of Ceramics in Alfred, NY. He is currently an adjunct professor in the Ceramics Department at the Rhode Island School of Design.



Linda Rae Coughlin

Warren, NJ

Standing Naked, 1999

Fiber

48 x 24 inches

Linda Rae Coughlin acquired a BFA from Kean University and has taken postgraduate level courses in Fine Arts at Montclair State University in Montclair, NJ. Linda is a self-employed fiber artist, rug restorer and photographer.



Catherine Dunning

Maplewood, NJ
Navajo Bowl, 2000
Earthenware
6 x 9 1/2 inches
Baby Set, 2000
Earthenware
4 x 4 1/2 inches

Catherine Dunning was awarded a BFA in Sculpture from Tyler School of Art in Philadelphia, PA and a MFA in Ceramics from the University of Hawaii at Manoa in Honolulu, HI. Currently Catherine is a museum educator at The Newark Museum in Newark, NJ. She has been awarded a number of grants including the Pacific Asian Scholarship from the University of Manoa and the Hudson County New Jersey Partnership Grant.



Leslie Nobler Farber

Demarest, NJ
Scars from Spots, 1998
Mixed media
39 x 46 inches

Leslie Farber obtained a BFA from the University of Michigan School of Art in Ann Arbor, MI. She also received an MA in Communication/Computer Graphics from the New York Institute of Technology in New York City and an MFA in Combined Media from Hunter College in New York City. Leslie has received many awards and grants which include a Travel Grant to the International Conference: Material Culture, Surface Design Association; Eurographics 93; Professional Fine Arts Finalist, 2nd place USA; and Career Development Grant for Research, William Paterson University, Wayne, NJ.

Exhibition Checklist

35



John Louis Fulwood

Pennington, NJ
Tea Set, 2000
Ash glazed stoneware
9 x 9 inches

John Fulwood was awarded a BA in Ceramics from Mercer University in Macon, GA and received an MFA in Ceramics with a minor in Jewelry and Metal from the University of North Texas in Denton, Texas. Presently John is the business owner and resident potter at Kissimmee River Pottery in Pennington, NJ as well as a ceramics instructor for the Princeton Arts Council, Princeton, NJ. John has received many awards and honors which include Third Place, Crafts, Peddlers Village Fine Arts and Crafts Show, Lahaska, PA; First Place, Crafts, Roanoke Festival in the Park, Roanoke, VA; and Best of Show, Manasota Beach Arts and Crafts Show, Englewood, FL.

Terri Gelenian-Wood

Montclair, NJ

Tea Infuser, 1999

Sterling, laminate

6 5/8 x 2 1/2 x 1/2 inches

Breakfast Accoutrements, 1996

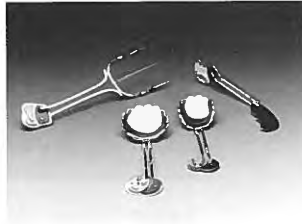
Sterling, formica

7 1/4 x 2 1/8 x 3/8 inches

Pea Spoon, 1994

Sterling, formica, green onyx,
stainless beads

10 x 2 1/8 x 1 inches



Terri Gelenian-Wood was awarded a BFA at the University of Wisconsin at Milwaukee. She also obtained an MFA from the Tyler School of Art at Temple University, Philadelphia, PA. Currently Terri is a self-employed metal-smith as well as a metals instructor at The Newark Museum-Arts Workshop in Newark, NJ.

Exhibition Checklist



Erik Johanson

Tinton Falls, NJ

Entwining, 1999

Wood

32 x 32 inches

Erik Johanson received a BFA in Sculpture from Drake University, Des Moines, IA. He is currently working toward an MA in Studio Ceramics at Kean University.



Ingrid Jordan

Roosevelt, NJ

Footed Vessel, 1998

Clay

14 x 10 x 13 inches

Teapot, 1998

Clay

10 x 10 x 10 inches

Ingrid Jordan received a BFA in Painting and Printmaking from Beaver College in PA. After receiving her BFA, she studied pottery and painting at the San Francisco Art Institute and art education at San Francisco State College. Currently Ingrid is a ceramics instructor and technical supervisor at The College of New Jersey as well as a ceramics instructor at Mercer County Community College where she also serves on the Visual Arts Advisory Board.



Betsy King

Ocean City, NJ

Can't See the Forest for the Trees
1999

Steel, paper
46 x 13 x 9 inches

Betsy King was born in Washington, D.C. She received a BFA from Virginia Commonwealth University and continued her studies at Geological Institute of America in Richmond, Virginia. Betsy received a Fellowship Grant from the New Jersey State Council on the Arts in 1985, 1991 and 1998. Other awards include a Merit Award from The Ringling Museum of Art in Sarasota, Florida.



Charles Kumnick

Upper Black Eddy, PA

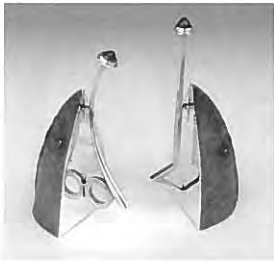
Quilt, 1999

Oak, pine, steel
36 x 24 x 29 inches

Charles Kumnick received a BS, MA and MFA from Bowling Green University in Bowling Green, OH. He is currently Professor of Art at The College of New Jersey in Ewing, NJ. Charles has received many honors including Special Prize in Metal and Light from the Electoral Palace in Koblenz, Germany; Honorable Mention Sculpture from the State Museum of Pennsylvania; and Artpark, Craft Artist Teaching Residency in Lewiston, NY.

Exhibition Checklist

37



Kenneth C. MacBain

Norwood, NJ

Napkin Holders, 1999
Silver, 14K gold, citrine
2 1/2 x 2 1/2 x 2 1/2 inches

Salad Serving Set, 1999
Sterling silver
12 inches

Salt & Pepper Shakers, 2000
Sterling silver, 14K gold, garnet,
topaz
3 1/2 inches

Kenneth MacBain attended the State University of New York at New Paltz where he received a BFA in Gold and Silversmithing. Kenneth then received an MFA in Metals in 1990 from Temple University's Tyler School of Art. He is presently an assistant professor at New Jersey City University in Jersey City, NJ as well as an adjunct faculty at Westchester Community College/Westchester Art Workshop. Kenneth has received a variety of awards and honors which include Finalist Award, The Niche Awards, Niche Magazine; First Place Worthy of Show, Craft Division, American Pewter Guild Design Competition; and Second Place Functional Art Exhibition, Tompkins Art Center, Tompkins Cove, NY.



Paula Marino

Cedar Grove, NJ

Girlfriends #4, 1998

Gold leaf on byobu screens

60 x 24 inches

Paula Marino obtained a BA in Fine Arts from Rutgers University and an MA in Fine Arts from Montclair State University. Paula is presently employed at the Oliver Street School in Newark, NJ where she is an art teacher. She has received grants from The Geraldine R. Dodge Foundation, Artist/Educator Initiative and for the past two years has received The Dodge Foundation's Artist/Educator Mini Grant.

Exhibition Checklist



William McCreath

Montclair, NJ

Tall Teapot, 2000

Reduction fired shino glaze

Vase Triste, 2000

Reduction fired

15 1/2 x 5 inches

William McCreath began his education at the Teachers College in Dundee, Scotland. He then received a BFA in Painting at the University of Manitoba, and an MFA in Ceramics from the Cranbrook Academy of Art. William has received several awards and recognitions such as the Visual Arts Fellowship, New Jersey State Council on the Arts; Dux Prize for Art, Girvan, Scotland and Carl Milles Scholarship for Advanced Study in Ceramics, Cranbrook Academy of Art.



Franc Palaia

Jersey City, NJ

Liberty, Iconic Lantern, 2000

Light, metal, plastic transparencies

14 x 6 x 5 inches

Franc Palaia received a BA from Newark State College in 1971 and received an MFA in 1973 from the University of Cincinnati. He has been awarded grants from the New Jersey State Council on the Arts for sculpture in 1983 and the New Jersey State Council on the Arts for photography in 1992.



Nina Pellegrini

Montclair, NJ

Dog Platter, 1999

Clay

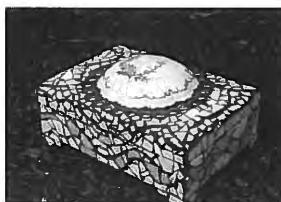
9 1/2 x 12 inches

Dog Compote, 1999

Clay

7 x 9 inches

Nina Pellegrini was born and raised in New York City where she attended The New York Studio School of Drawing, Painting and Sculpture and The School of Visual Arts. Nina is not only an artist, but an author and illustrator of two children's books, *Families Are Different* and *Charlie Claus*.



Andrea G. Raphael

Jersey City, NJ

Blue Box, 1998

Mixed media

12 x 6 inches

Andrea Raphael was awarded a BA in Art and Art History from William Paterson University. Andrea was also awarded a BFA in Illustration from Parsons School of Design in New York City.

Exhibition Checklist

39



Eric Rhodes

Freehold, NJ

Table, 2000

Polystyrene, fiberglass, polyurethane finish

16 x 40 x 40 inches

Chair, 1999

Steel armature, polystyrene, fiberglass, polyurethane finish

36 x 24 x 24 inches

Eric was awarded a BA in Fine Arts from Kean University, where he took classes in sculpture and interior design. A carpenter by trade, his educational pursuits, interest in cars and building experience lead him to design and build furniture which incorporates elements of all of his interests.



John D. Richie

Ridgewood, NJ

Wall Cabinet, 1999

Cherry, cedar, brass

48 x 20 x 12 inches

Corner Wall Cabinet, 2000

Cedar, cherry, bamboo

45 x 11 x 9 inches

John D. Richie is a member of the American Craft Council. John was a recipient of the 1999 Woodworking Fellowship from the New Jersey Council on the Arts.



Peter Tilgner

Tenafly, NJ

Red Apple Rest, 1995

Mixed media

25 x 16 1/2 x 14 1/2 inches

Peter Tilgner has placed first in a variety of shows including City Without Walls Gallery 15th Annual Metro Show; Arts Council of the Essex Area 8th Annual Exhibition; Putnam Arts Council, Indoor-Outdoor Sculpture Show and Pavilion Gallery, Memorial Hospital, Mixed Media Show.



Peter Tischler

Pine Brook, NJ

Highboy, 1997

Spalted maple

78 x 36 x 21 inches

Rocker, 1994

Cherry, curly maple

42 x 26 x 38 inches

Peter Tischler earned a BS in Natural Resources from the University of Rhode Island in 1982. In 1986 Peter was awarded a Certification in Cabinetmaking from North Bennett Street School. His work has been exhibited in the New Jersey Arts Annual in 1992, 1993, 1994, 1995 and 1996.

Exhibition Checklist



Stuart Topper

Metuchen, NJ

The Cowbox, 1999

Mixed media

14 x 17 x 5 inches

The Orb, 1999

Purpleheart, basswood, gold leaf

6 x 6 x 6 inches

Stuart Topper received both a BA in Fine Arts and an MFA in Sculpture from Rutgers University in New Brunswick, NJ. Presently Stuart is a professor in the Fine Arts Department at Kean University. He has been awarded many honors and distinguished achievements which include a Dodge Foundation Fellowship for Artist/Teacher, Steven Heater Scholarship in Woodworking/Furnituremaking, and the Martin Award for service in the Fine Arts Department at Kean University two years in a row.



The Morris Museum
6 Normandy Heights Road
Morristown, New Jersey 07960
973.538.0454
www.MorrisMuseum.org