

New Jersey Fine Arts Annual:
Local Life

Morris Museum

Funding for this exhibition has been made possible in part by funds from the New Jersey State Council on the Arts/Department of State, a Partner Agency of the National Endowment for the Arts.

All photography courtesy of the artists.



Cover image:

Serena Bocchino, *Touch the Sky*, 2008. Enamel on canvas, 52 inches x 56 inches
Courtesy of Tria Gallery, NY

New Jersey Fine Arts Annual: Local Life

Morris Museum
April 29—June 28, 2009



NEW JERSEY ARTS ANNUAL

The New Jersey Arts Annual is a unique series of exhibitions that highlights the works of visual artists and craftspeople in the state. Two exhibitions take place each year in alternating sequence: Fine Arts in Spring/Summer and Crafts in Fall/Winter.

The series of exhibitions is co-sponsored by the New Jersey State Council on the Arts/ Department of State, a Partner Agency of the National Endowment for the Arts, the Jersey City Museum, Montclair Art Museum, Morris Museum, The Newark Museum, New Jersey State Museum and The Noyes Museum of Art.

Upcoming Arts Annual Exhibitions:

Fall 2009-Crafts

The Noyes Museum

Spring 2010-Fine Arts

New Jersey State Museum

NEW JERSEY STATE COUNCIL ON THE ARTS

Carol Ann Herbert, *Chair*

Sharon Burton Turner, *1st Vice Chair*

Judith G. Leone, *2nd Vice Chair*

Anna Aschkenes

Lawrence K. Carlbom

Elizabeth G. Christopherson

Atlantic County Freeholder Alisa Cooper

Arthur Factor

Ofelia Garcia

East Orange Councilwoman Joyce C. Goore

Sharon Harrington

Ann Evelyn Koeppel

Elizabeth A. Mattson

Kevin M. O'Brien

Amy B. Simon

Germaine B. Trabert

Lana Gold Walder

Ex-Officio Members

Secretary of State Nina Mitchell Wells

Senator Thomas H. Kean, Jr.

Assemblywoman Valerie Vainieri Huttel

Executive Director

Steve Runk

MORRIS MUSEUM BOARD OF TRUSTEES

Mary M. Chandor, *Chair*

Nelson Schaenen, Jr., *Vice Chair & Campaign Chair*

Paul J. Laud, *Vice Chair and Treasurer*

Anthony V. Bastardi, *Vice Chair & Guinness Wing Chair*

Lawrence O'Connor, *Vice Chair*

Richard A. Watson, Esq., *Secretary*

Charles A. Pascarella, *Assistant Secretary*

John S. Hemmendinger, *Assistant Treasurer*

Peter V. Mancuso, *Chairman Emeritus*

Blair A. Boyer

Patricia Maynard

Carl Braunschweiger

Michael P. Miller

S. Jervis Brinton, Jr.

Rose Pancirov

Austin R. Bush

Joan Petite

Meredith Grocott, Esq.

Robert L. Ricciardi

Thomas J. Ficarra, D.Litt.

Fred H. Rohn

Ruth S. Hennessy

Timothy Russell

Gerri R. Horn

Paul Santucci

Enid Kinney, *ex officio*

Richard T. Sparks

Scott Kobler, Esq.

Donna Stack

Anu Lacis

Sheila Stephenson

Margaret K. Lyons

Norman Tregenza

Joseph N. Markovich

Edward von der Linde

Irene Yew

STATEMENT FROM THE SECRETARY OF STATE

I am delighted to offer congratulations and best wishes to the artists represented in this year's New Jersey Arts Annual Exhibition of fine arts, in addition to each one of the sponsoring organizations whose support is instrumental to the ongoing advancement of the arts statewide.

Events such as these are invaluable. Not only do they create a wonderful synergy between artists and the public, but in doing so offer a glimpse of the unique creative experience that has long defined the fine collection of museums and galleries across New Jersey's varied landscape. Moreover, the Arts Annual exhibition illustrates the extraordinary vitality of our artists, all while reinforcing the immeasurable value of the arts in our culture, communities and within our lives.

The Department of State and the New Jersey State Council on the Arts are proud to help make this program possible. With the ongoing commitment by the Council and its museum cosponsors, the Arts Annual will continue to stand as a testament to the artistic excellence and a celebration of New Jersey at its very best.

Thank you to all of the participating museums for celebrating New Jersey's artistic character and to the artists whose work will continue to strengthen New Jersey's formidable artistic legacy for years to come.

Nina Mitchell Wells, Esq.
Secretary of State

STATEMENT FROM THE NEW JERSEY STATE COUNCIL ON THE ARTS

On behalf of the New Jersey State Council on the Arts we congratulate the artists represented in the 2009 New Jersey Arts Annual exhibition in Fine Arts. We are all enriched by the work of artists who help us to see the world and its possibilities in new ways. For the many exceptional artists who call New Jersey home, the New Jersey Arts Annual exhibition series continues to serve as an important forum in both fine arts and in crafts. The Council is proud to cosponsor this year's outstanding exhibit in fine arts with the Morris Museum.

The Arts Annual series is one of many ways that the Arts Council supports the work and advancement of New Jersey artists. The Council awards fellowships, provides technical assistance, cosponsors showcase opportunities, hosts a virtual gallery on the Discover Jersey Arts web site www.jerseyarts.com and provides grants and incentives to arts organizations both to showcase and better serve New Jersey artists. The Council also manages the Arts Inclusion program, through which artists work to create innovative artwork for State buildings.

The Arts Council applauds the boards and staff of the six participating museums: the Jersey City Museum, Montclair Art Museum, Morris Museum, The Newark Museum, New Jersey State Museum, and The Noyes Museum of Art for their support and commitment to the work of New Jersey artists featured in the Arts Annual exhibition series. We particularly want to thank Steve Miller, Executive Director of the Morris Museum, and the board and staff for making such a substantial investment in the success of this program and for mounting this beautiful exhibit.

Carol Herbert
Chair

Steve Runk
Executive Director

Tom Moran
Senior Program Officer, Artists' Services

DIRECTOR'S STATEMENT

It is with great pleasure that the Morris Museum presents the 2009 *New Jersey Arts Annual: Local Life*. The artists represented in the exhibition respond to the world around them from distinct and unique perspectives.

New Jersey is a state teeming with “local life” of all kinds and definitions. Probably the most diverse state in the Union, a wealth of subject matter awaits any artist seeking inspiration nearby. Be it purely visual or purely intellectual or some combination thereof, what is local is perhaps the most familiar of subject sources. Indeed, in looking back over art history, it is the “local” that artists have thrived upon. Van Gogh, Rembrandt, Mary Cassatt, Andrew Wyeth, and Hogarth are just five examples of artists for whom the familiar and not-too-distant sparked their creative imaginations. Even Andy Warhol made art based on common, everyday icons of the daily “local” scene.

Curating a juried group art exhibition in New Jersey is no simple matter. Our state is blessed with an extraordinary range of artists reflecting an astonishing mix of sensibilities, outlooks and ideas. This year the Morris Museum enjoyed having its own art staff review submitted work and the results of their decisions are impressive. The exhibition was organized and selected by Ann Aptaker, Curator of Exhibitions, and Karen Kwarciak, Curator of Education. Their diligence as jurors is apparent in the quality and scope of the twenty-two pieces representing the same number of New Jersey artists.

The New Jersey State Council on the Arts is to be commended on continuing the *New Jersey Arts Annual*. Bringing art and audiences together in ways that encourage inquiry, enjoyment and thinking is a rewarding endeavor that benefits all citizens of our state.

The Morris Museum has a long tradition of supporting contemporary New Jersey artists through exhibitions, referrals, and acquisitions. As an institution that celebrates creativity in the arts, it hosts a busy schedule of presentations and programs both on and off campus. *The New Jersey Arts Annual* continues a rewarding legacy that traces back to the museum's origins in 1913.

Steven H. Miller
Executive Director, Morris Museum

CURATORS' STATEMENTS

A society cannot consider itself healthy without the arts as part of its identity and activity. New Jersey is fortunate that our State Council on the Arts and the museums throughout the state are vigilant in their encouragement of creativity on behalf of our citizens. Thus, New Jersey can take pride in the creative health and energy of our arts and artists. This vibrancy is clearly evident in the 2009 New Jersey Arts Annual, "Local Life," at the Morris Museum.

Of the 151 submissions received, 22 were selected for the exhibition. Though many more submissions were worthy of consideration, the two jurors considered these twenty-two as having the highest artistic merit and clearest fulfillment of the thematic criteria of "Local Life." The artists whose work is on view possess the acuity of vision to look deeply into the life around them and within them, making the experience of life intimate and therefore "local."

Congratulations to the artists selected for the 2009 New Jersey Arts Annual at the Morris Museum.

Ann Aptaker
Curator of Exhibitions, Morris Museum

The artists that were selected to be a part of the 2009 New Jersey Fine Arts Annual demonstrate both skill and a passion for their craft. From Michael Wiley's use of wooden chairs and bird nests in *Paradox* to Bette Blank's painting, *Batman in Short Hills*, it is apparent that each artist's take on the theme - "Local Life" - is profoundly unique and personal.

While it was an amazingly difficult task to select works for this exhibition, the twenty-two that were chosen best exemplified the "local" theme. As an educator, I now look forward to the rich dialogue that will surround these works, and possibly inspire others to take a peek at their own "local life."

I congratulate the twenty-two artists from across New Jersey who were selected to be a part of this exhibition. Thank you for letting us take a glimpse into your life and community.

Karen Kwarciak
Curator of Education, Morris Museum

PARTICIPATING ARTISTS

Amy Becker (Madison, NJ)

Bette Blank (Madison, NJ)

Serena Bocchino (Basking Ridge, NJ)

Jeanne V. Campbell (Montclair, NJ)

Stephen Catron (Mendham, NJ)

Alphonso Dunn (Hackensack, NJ)

Alyssa Edmée Fanning (Dumont, NJ)

Daniel Finaldi (Highland Park, NJ)

Racquel Foote (Paterson, NJ)

Alexa Garbarino (Montclair, NJ)

Tai Hwa Goh (Fort Lee, NJ)

Alice Harrison (Sparta, NJ)

Seth Ruggles Hiler (Boonton, NJ)

Chris Kappmeier (Lyndhurst, NJ)

So Yoon Lym (Wayne, NJ)

Winifred McNeill (Jersey City, NJ)

Sarah Petruziello (South Orange, NJ)

Roslyn Rose (Hoboken, NJ)

Carol Schwartz (Englewood, NJ)

Jay Seldin (Montclair, NJ)

Michael Wiley (Ewing, NJ)

Susan H. Wilson (Morristown, NJ)



Amy Becker

Clown in the Middle, 2007. Photograph, 14 inches x 11 inches



Bette Blank

Batman in Short Hills, 2007. Oil on linen, 30 inches x 40 inches



Serena Bocchino

Touch the Sky, 2008. Enamel on canvas, 52 inches x 56 inches
Courtesy of Tria Gallery, NY



Jeanne V. Campbell

Still Life in Kitchen, 2009. Giclée print, 13 inches x 19 inches



Stephen Catron

A Suburban Home of Drama and Consequence, 2008. Mixed Media, 49 inches x 25 inches



Alphonso Dunn

Good Ear Bad Hair, 2008-2009.
Oil and water-based pencil and wax
crayon on prepared paper,
24 ½ inches x 36 ½ inches



Alyssa Edmée Fanning
Red Zero, 2007. Oil on linen, 26 inches x 33 inches



Daniel Finaldi
At Night with Family, 2008. Oil (no surface medium given), 36 inches x 48 inches



Racquel Foote

Demolition, 2008. Etching, 9 inches x 23 inches



Alexa Garbarino

Jess at Rainbow Rink, 2008. Black and white photograph, 27 inches x 28 inches



Tai Hwa Goh

Suspicious Seed 08-3, 2008. Mixed media print on hand waxed paper, 24 inches x 50 inches



Alice Harrison

At Home 2, 2007. Mixed media collage, 4 ¼ inches x 4 ¾ inches



Seth Ruggles Hiler

Rear View Studio, 2008. Oil (no surface medium given), 12 inches x 24 inches



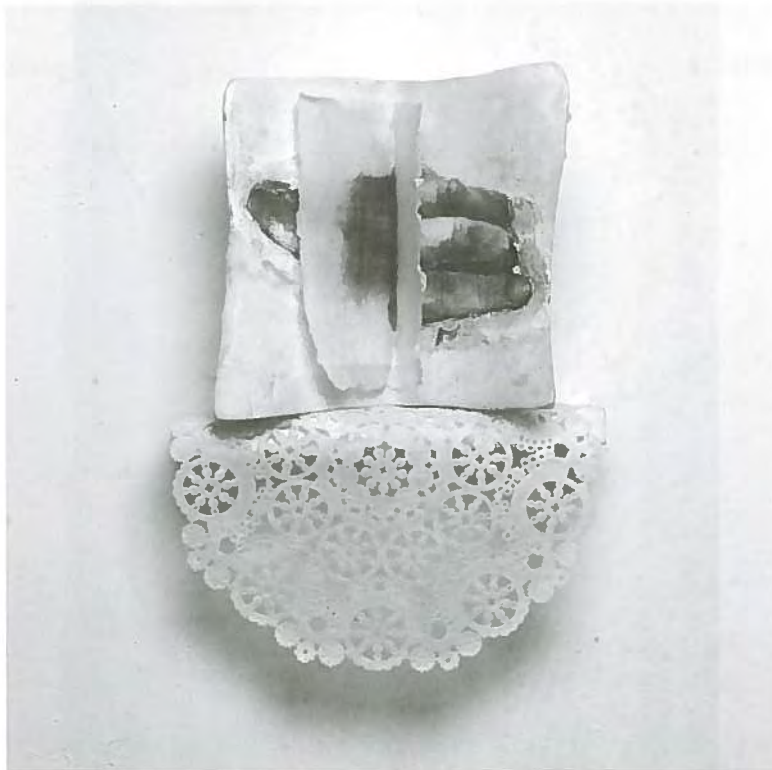
Chris Kappmeier

Flavored Ice Stand, 2007. Oil on canvas, 24 inches x 30 inches



So Yoon Lym

Edgewater, 2008. Acrylic on paper, 14 inches x 17 inches



Winifred McNeill

*Body of Knowledge 4, 2008. Graphite on plaster with wax & mixed media,
Approximately 12 inches x 12 inches*



Sarah Petruziello

Umbilical (Severed), 2007. Guache and watercolor on Arches paper, 11 inches x 15 inches



Roslyn Rose

Three Stalwart Gentlemen, 2008, Photographic montage, 22 inches x 19 inches



Carol Schwartz

Harriet and Louie, 2009. Laminated mixed woods; paint, 54 inches x 14 inches x 13 inches



Jay Seldin

Girl on Float, Montclair 4th of July Parade, 2008. Black & white photograph, 28 inches x 24 inches



Michael Wiley
Paradox, 2007, Mixed media
70 inches x 60 inches x 60 inches

Susan H. Wilson
I and Myself, 2008, Clay and mixed media
78 inches x 16 inches x 10 inches



EXHIBITION CHECKLIST

All works are courtesy of the artists unless otherwise noted.

Amy Becker

Clown in the Middle, 2007

Photograph, 14 inches x 11 inches

Bette Blank

Batman in Short Hills, 2007

Oil on linen, 30 inches x 40 inches

Serena Bocchino

Touch the Sky, 2008

Enamel on canvas, 52 inches x 56 inches

Courtesy of Tria Gallery, NY

Jeanne V. Campbell

Still Life in Kitchen, 2009

Giclée print, 13 inches x 19 inches

Stephen Catron

*A Suburban Home of Drama and
Consequence, 2008*

Mixed Media, 49 inches x 25 inches

Alphonso Dunn

Good Ear Bad Hair, 2008-2009

Oil and water-based pencil and wax crayon on
prepared paper, 24 ½ inches x 36 ½ inches

Alyssa Edmée Fanning

Red Zero, 2007

Oil on linen, 26 inches x 33 inches

Daniel Finaldi

At Night with Family, 2008

Oil (no surface medium given),
36 inches x 48 inches

Racquel Foote

Demolition, 2008

Etching, 9 inches x 23 inches

Alexa Garbarino

Jess at Rainbow Rink, 2008

Black and white photograph, 27 inches x 28 inches

Tai Hwa Goh

Suspicious Seed 08-3, 2008

Mixed media print on hand waxed paper,
24 inches x 50 inches

Alice Harrison

At Home 2, 2007

Mixed media collage, 4 ¼ inches x 4 ¾ inches

Seth Ruggles Hiler

Rear View Studio, 2008

Oil (no surface medium given),
12 inches x 24 inches

Chris Kappmeier

Flavored Ice Stand, 2007

Oil on canvas, 24 inches x 30 inches

So Yoon Lym

Edgewater, 2008

Acrylic on paper, 14 inches x 17 inches

Winifred McNeill

Body of Knowledge 4, 2008

Graphite on plaster with wax and mixed media,
Approximately 12 inches x 12 inches

Sarah Petruziello

Umbilical (Severed), 2007

Guache and watercolor on Arches paper,
11 inches x 15 inches

Roslyn Rose

Three Stalwart Gentlemen, 2008

Photographic montage, 22 inches x 19 inches

Carol Schwartz

Harriet and Louie, 2009

Laminated mixed woods; paint,
54 inches x 14 inches x 13 inches

Jay Seldin

Girl on Float, Montclair 4th of July Parade, 2008

Black and white photograph, 28 inches x 24 inches

Michael Wiley

Paradox, 2007

Mixed media, 70 inches x 60 inches x 60 inches

Susan H. Wilson

I and Myself, 2008

Clay and mixed media,
78 inches x 16 inches x 10 inches



**6 Normandy Heights Road
Morristown, New Jersey 07960**

www.morrismuseum.org