

New Jersey Department of Transportation Organization Chart



State of New Jersey

Mission Statement: "Improving Lives by Improving Transportation."

View our latest organization chart online at:
www.njdot.nj.gov/about/



Commissioner
Francis K. O'Connor

**Chair of the Board
NJ Transit**
Francis K. O'Connor

The Commissioner serves in an ex-officio capacity for the following agencies:

- New Jersey Transit Corporation (Chair)
- New Jersey Transportation Trust Fund Authority (Chair)
- Delaware Valley Regional Planning Commission
- New Jersey Motor Vehicle Commission
- New Jersey Redevelopment Authority
- New Jersey Turnpike Authority
- North Jersey Transportation Planning Authority
- South Jersey Transportation Planning Authority
- South Jersey Transportation Planning Organization
- State Planning Commission

The Commissioner is also

- Chair of the Board, New Jersey Transit Corporation
- Chair of the Board, New Jersey Transportation Trust Fund Authority
- Chair of the Board, New Jersey Turnpike Authority
- Chair of the Board, South Jersey Transportation Authority

Deputy Commissioner
Joseph D. Bertoni

Inspector General
TBD

Legal Services
Philip Espinosa

Director Civil Rights & Affirmative Action
Vicki Tilghman-Ansley

External Programs
TBD

Internal Programs
R. Outram

**Assistant Commissioner
Operations**
(Emergency Management Coordinator)
Christopher Feintheil

**Deputy Director
Program Advancement**
V. Holman

**Assistant Commissioner
Administration**
Kelly A. Hutchinson

Chief of Staff
Christopher Scales

Chief Financial Officer
Finance
Charles Maciejunes

Director Budget
Steven Morley

Budget Analysis
R. Calderon

Enterprise Management Office
TBD

Director Accounting and External Audit
Barbara DeLucia

Deputy Director
C. Breza

Accounting Operations
T. Goodson

Agreement Accounting
D. Naik

External Audit
R. Temmer

Director Procurement
Anthony Genovese

Deputy Director
K. Abbott

Professional and Construction Services
M. Serenelli

Equipment, Materials & Supplies
M. Groninger

Director Information Technology
Gary Zayas

IT Security and Services
S. Prichard

Applications Development & Systems Support
J. Licari

Information Management & Technology Png.
T. Stewart

**Senior Director
Transportation Mobility**
Sal Cowan

**Director
Mobility Engineering**
John Longworth

Mobility Operations North
M. Juliano

Mobility Operations South
TBD

Permits
A. Gupta

Office of Emergency Management, Security & Response
R. Burd

**Senior Director
Regions**
Anthony Ennas

**Division Director
Operations North**
Danielle Roman

Asst. Division Director North
O. Diaz

**Division Director
Operations Central**
Christopher Tomlin

Asst. Division Director Central
A. Marino

**Division Director
Operations South**
John Bystrycki

Asst. Division Director South
J. Evanylo

**Director
Operations Support and Engineering**
Jackie Yiu

**Asst. Division Director
Operations Support and Engineering**
F. Schneider

Equipment Engineering & Operations
M. Boyer

**Division Director
Support Services**
J. Debby Hatzisavvas

**Deputy Director
Support Services**
A. Zeleznock

Facilities Planning & Engineering & Construction
D. Meszaros

Employee Safety
R. Zydorski

Bldg. Mgmt. Services
S. Mooney

**Deputy Director
Human Resources**
J. Nelson

Employee Relations
R. Thomas

Employee Benefits and Services
D. Morales

**Deputy Director
Human Resources**
K. Janiszewski

Recruitment and Appointments
R. Savelli

**Assistant Commissioner
Local Resources & Community Development**
Laine Rankin

Outdoor Advertising and Junkyards
Aeronautics & Modal Grants
K. Davis

**Director
Local Aid & Economic Development**
Deval Desai

Local Aid Economic Development & Local Support-Division Office
K. Skala

Local Aid District 1
A. Iervolino

Local Aid District 2 Newark
E. Johnson

Local Aid District 3
K. Pandit

Local Aid District 4 Cherry Hill
T. Berryman

**Senior Director
Local Aid & Economic Development**
David Bruccoleri

**Director
Community Development**
Veronica Murphy

Project Development
C. Jegan

Major Access Permits
TBD

**Director
Environmental Resources**
Pamela Garrett

Environmental Policy Group
W. McBride

Operations Project Support Unit

Stromwater Compliance & Site Remediation Group

Project Development Support Unit

**Assistant Commissioner
Statewide Planning, Safety and Capital Investment**
Eric Powers

**Director
Statewide Planning (Director, NJ Research Center)**
TBD

Statewide Strategies
S. Joshi

Deputy Director
A. Gendek

Research
TBD

**Director
Capital Investment and Program Coordination**
Sue Tomlinson

**Deputy Director
Capital Investment and Program Coordination**
A. Polachak

Capital Program Coordination
J. Figon

Capital Program Development
TBD

**Director
Safety**
Frank Neary

**Deputy Director
Safety, Bicycle and Pedestrian Programs**
D. LiSanti

Transportation Data and Support
S. Choborda

Safety, Bicycle and Pedestrian Programs
TBD

**Senior Director
Highway & Traffic Design**
(Deputy State Transp. Engr.)
Robert Marshall

**Director
Traffic Engineering**
J. Oplinger

**Director
Design Services**
A. Didok

Pavement & Drainage Management and Technology
R. Blight

**Director
Right of Way & Access Management**
Victor Akpu

**Deputy Director
Right of Way & Access Management**
R. Scanlon

Northern District
TBD

South District
M. Palmer

Right of Way & Access Management
E. Handleman

Technical Support
D. Kook

Closing
D. Hutchinson

**Director
Capital Program Support**
Tina Shutz

Design Standards
A. Roda

Landscape Architecture & Env. Solutions
TBD

**Director
Project Management**
Atul Shah

**Deputy Director
Team B**
P. Patel

Program Management Office
S. Ackerman

**Executive Regional Manager
Team A**
G. Patel

**Executive Regional Manager
Team C**
H. Dave

**Executive Regional Manager
Team D**
C. Manz

**Director
Bridge Engineering & Infrastructure Mgt.**
(State Transp. Engr.)
Eric Yermack

Structural Design & Geotechnical Engineering
K. Sharp

Structural Evaluation & Bridge Management
M. Khan

Structural & Railroad Engr. Services
A. Najem

**Director
Construction and Materials**
Alexander Borovskis

Materials
E. Inman

Construction Management
Y. Bhavsar

Reg. Constr. Engineering North
N. Appesh

Reg. Constr. Engineering Central
C. Kneidinger

Reg. Constr. Engineering South
D. Divalerio

**Director
Construction & Materials/Alternative Project Delivery**
T. Kondash

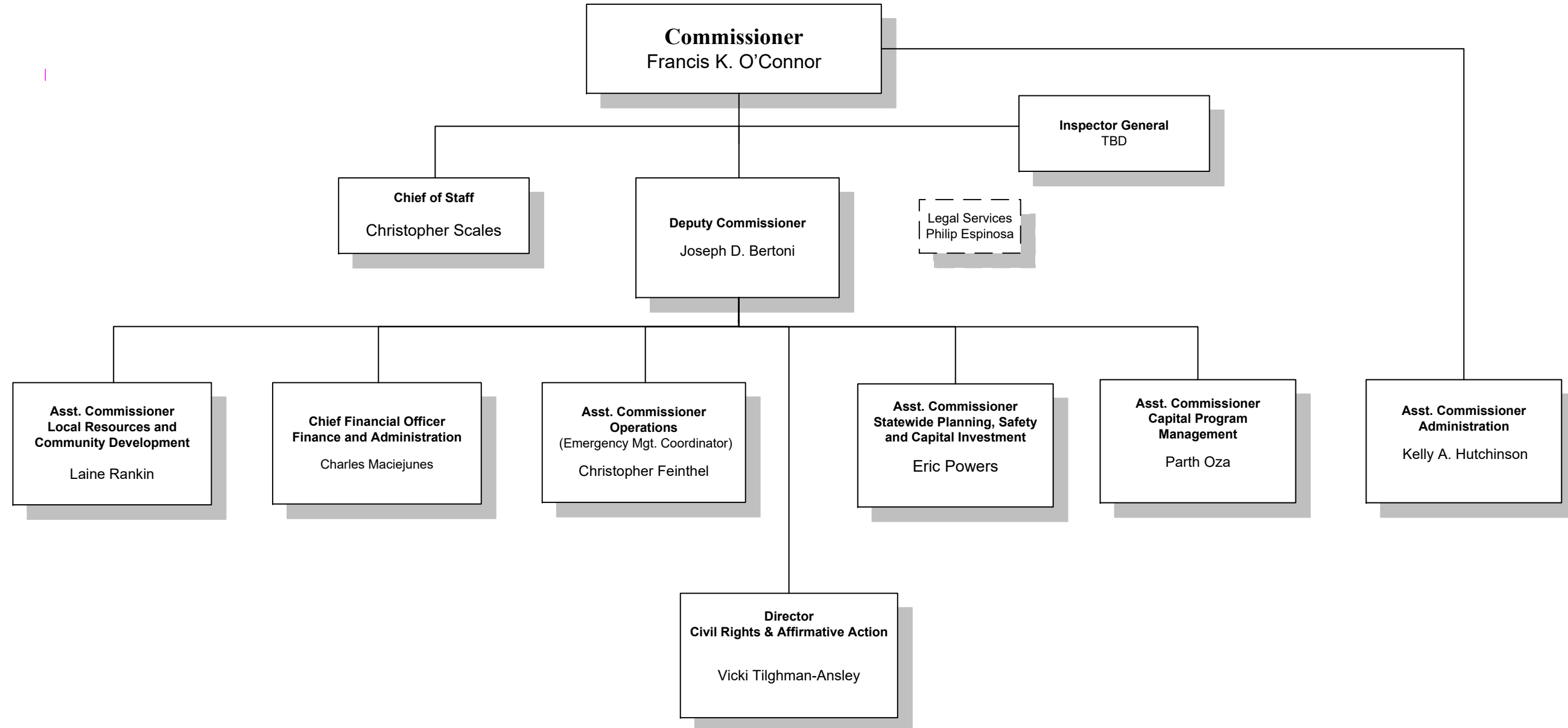
Design Build
TBD

**Assistant Commissioner
Capital Program Management**
Parth Oza
Deputy State Transportation Engineer

**Director
Maritime**
G. Clifton

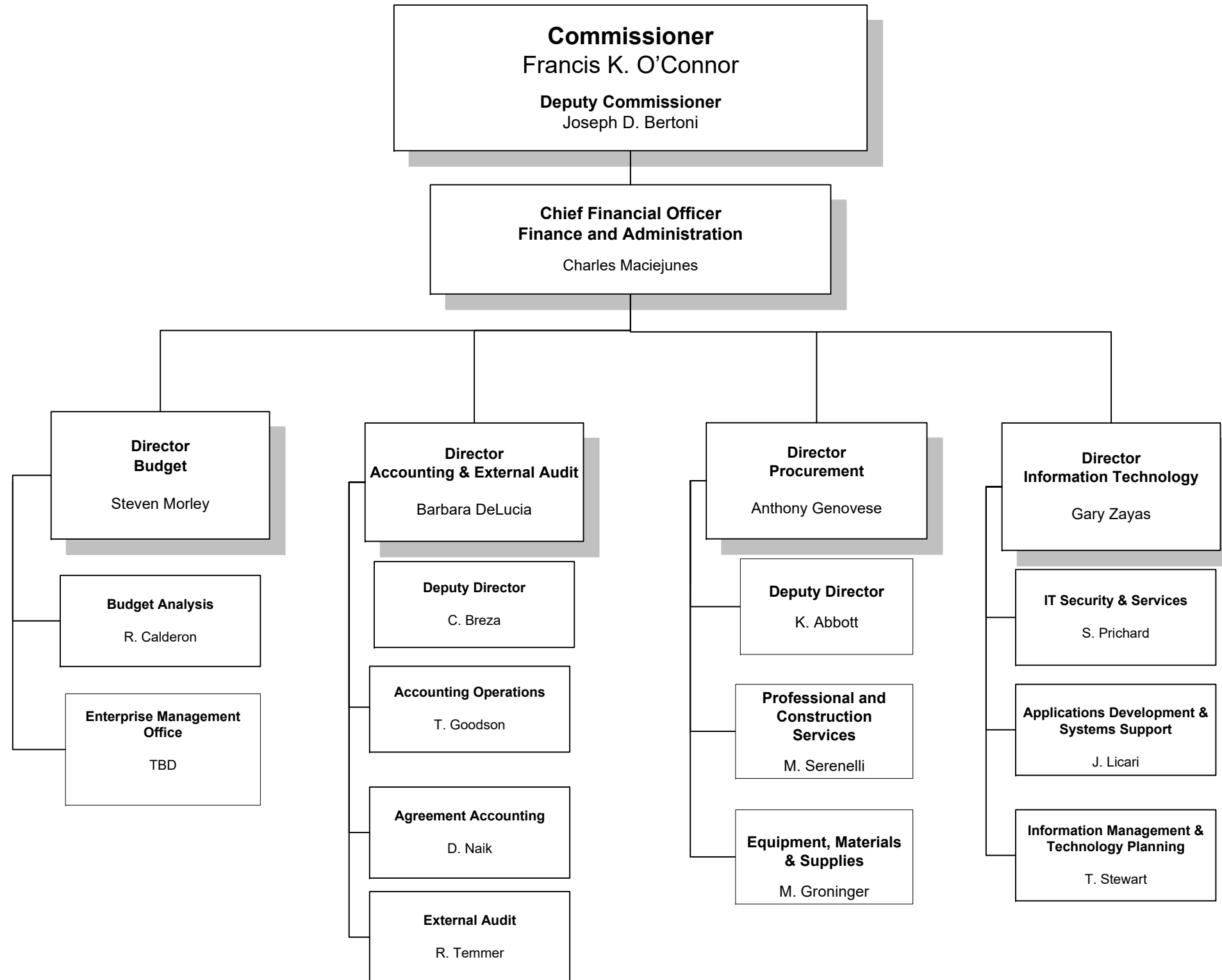
**Senior Director
Construction and Materials**
Albert Balluch

**New Jersey Department of Transportation
Organization Chart
Deputy Commissioner**



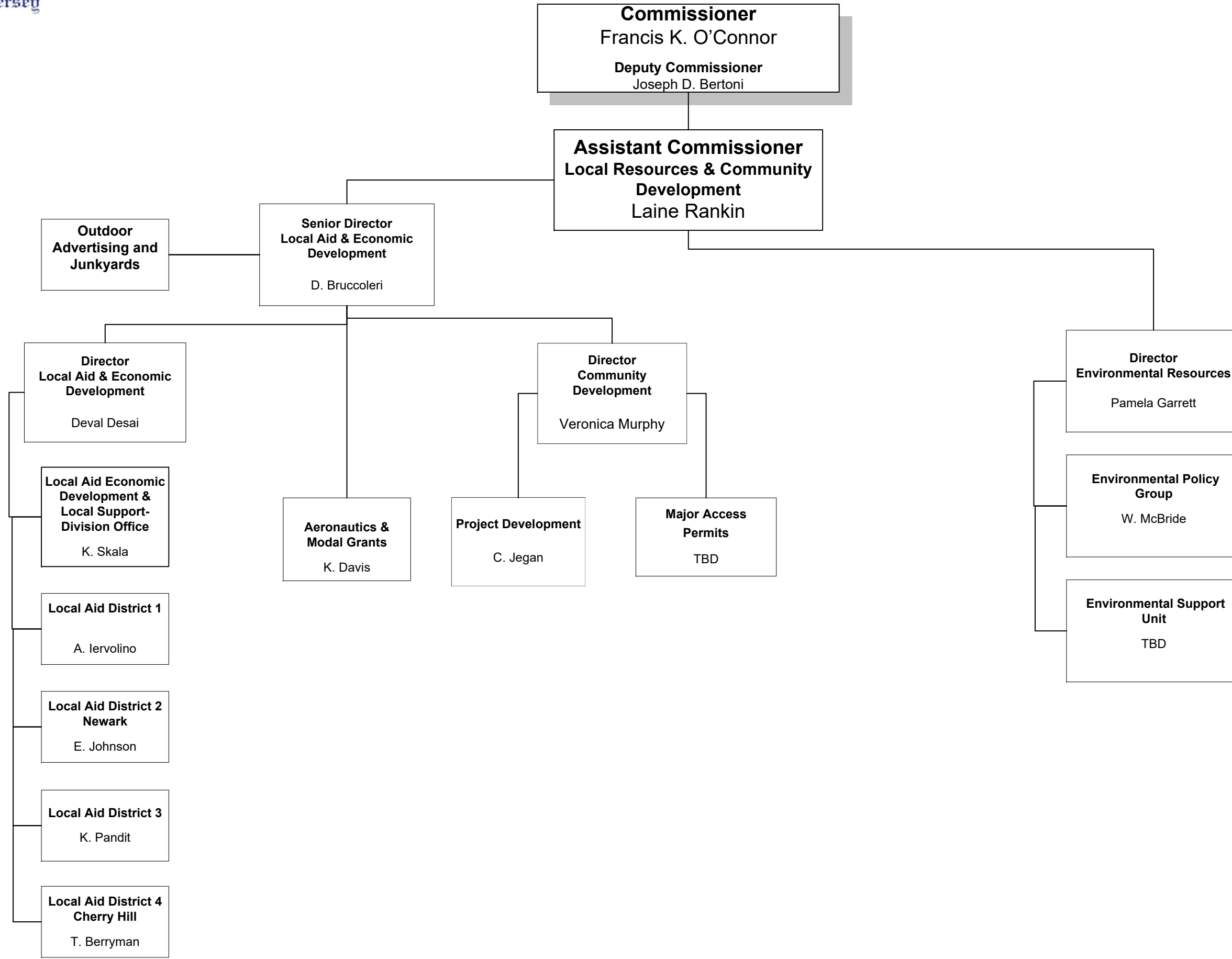


New Jersey Department of Transportation Organization Chart *Finance and Administration*





Local Resources & Community Development

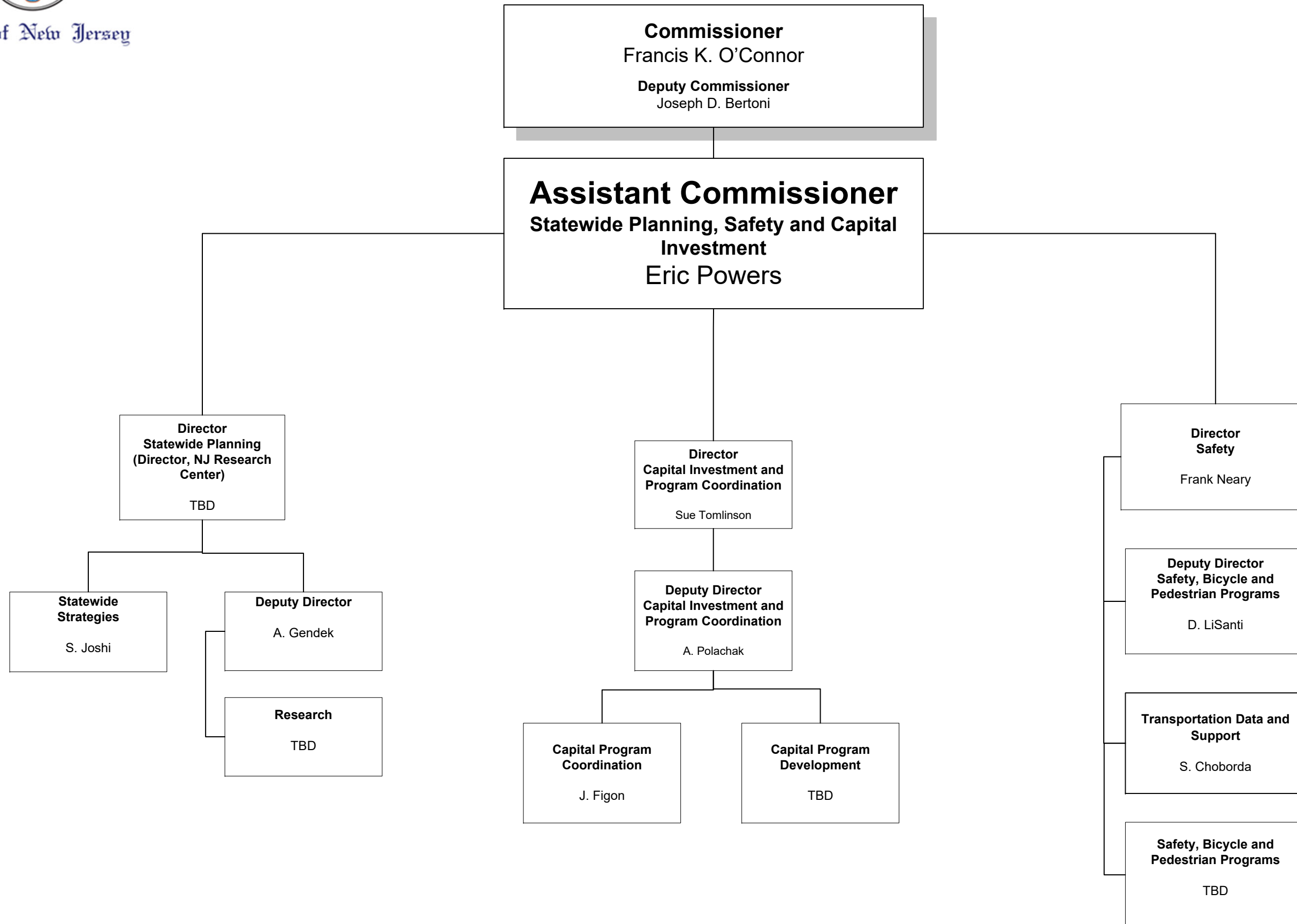


New Jersey Department of Transportation
Organization Chart



State of New Jersey

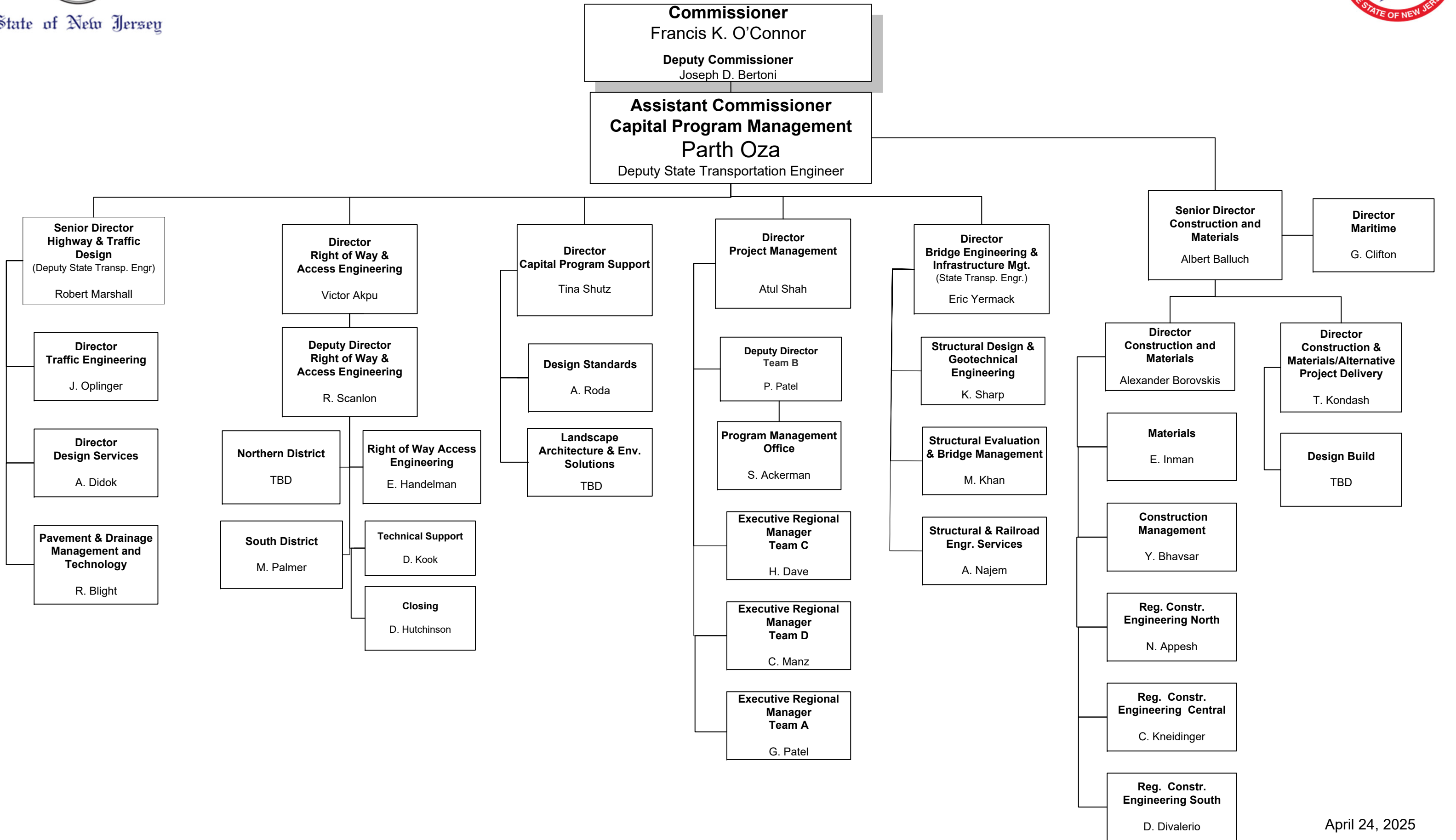
Statewide Planning, Safety and Capital Investment





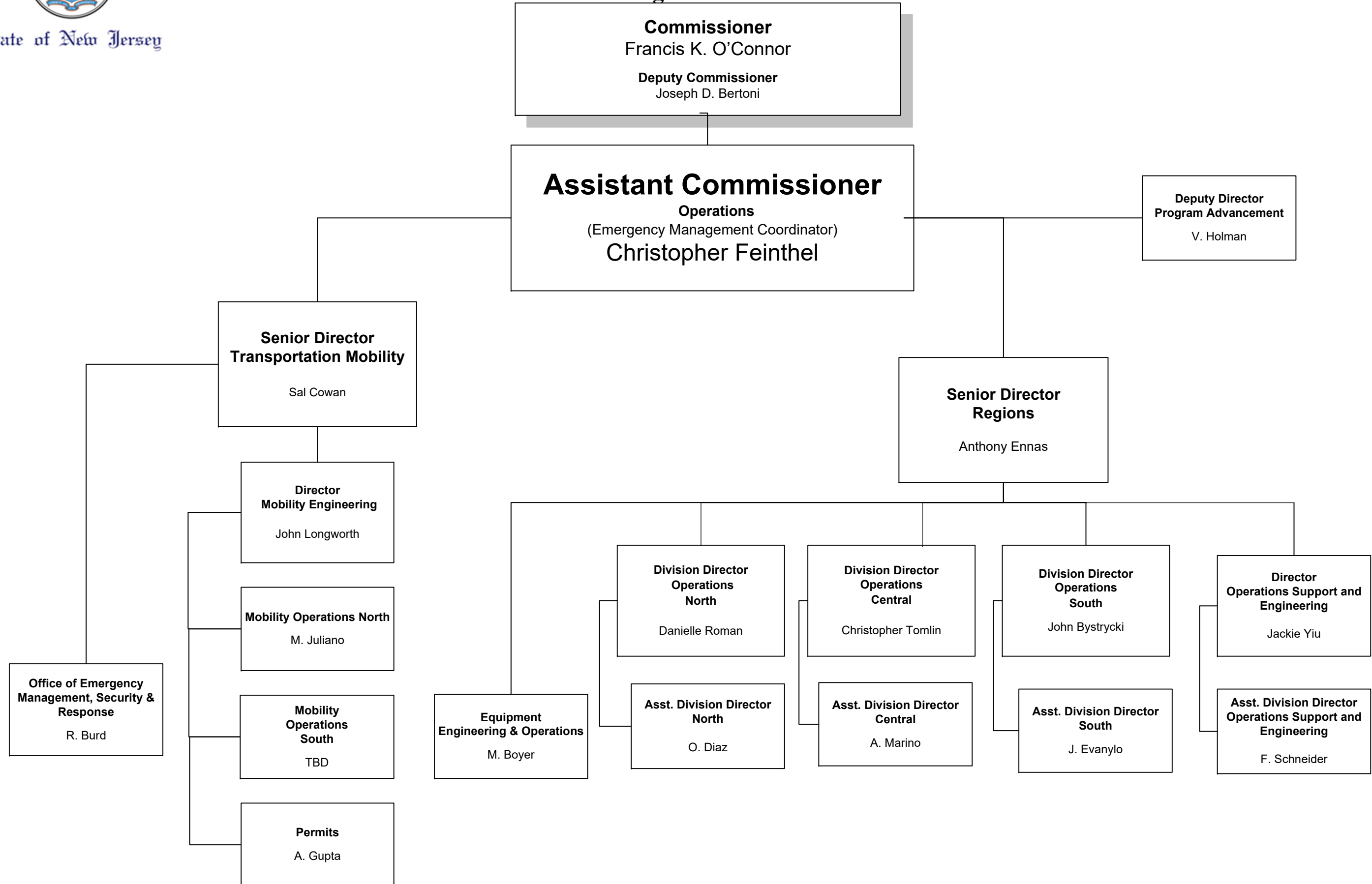
State of New Jersey

New Jersey Department of Transportation Organization Chart Capital Program Management





New Jersey Department of Transportation Organization Chart



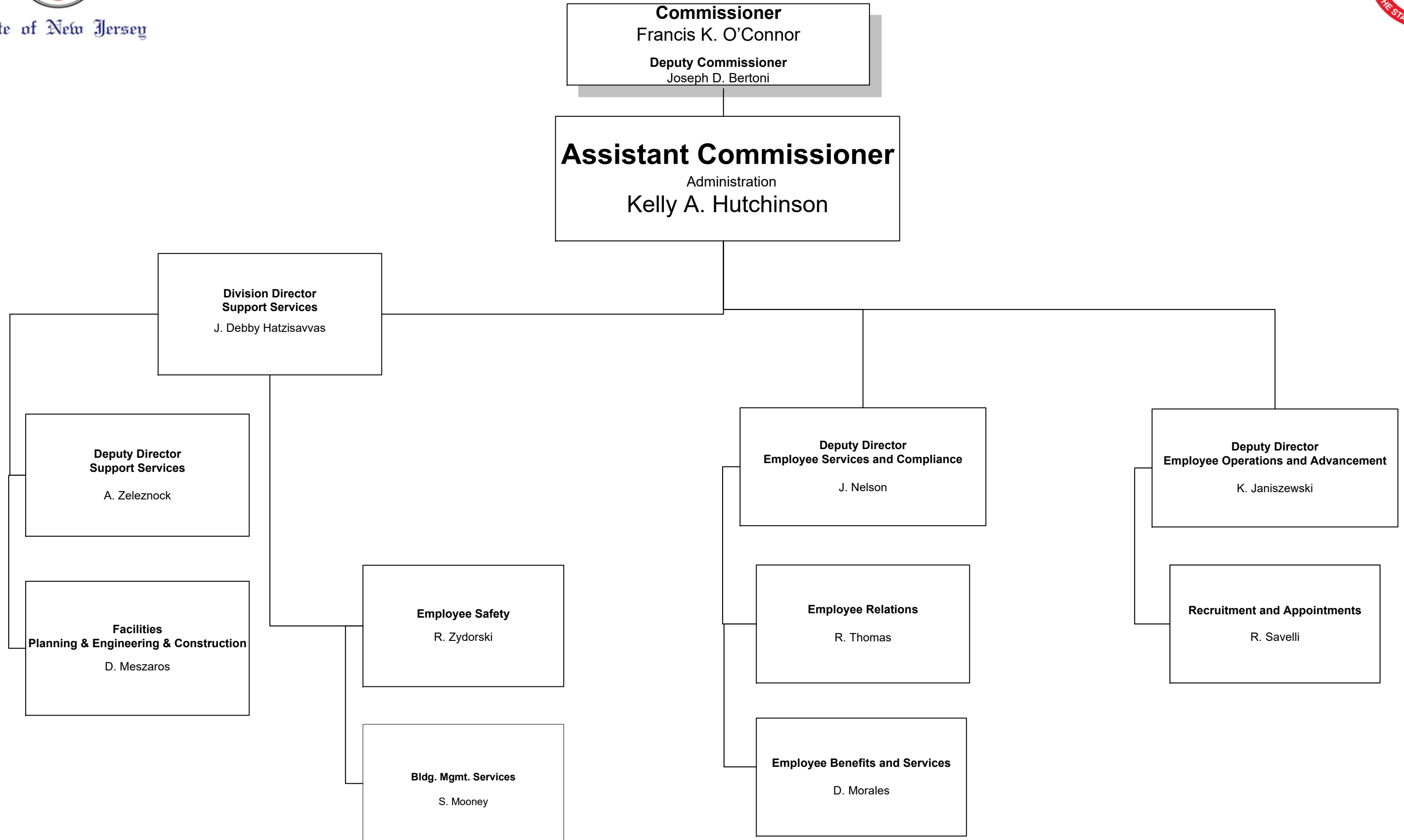


State of New Jersey

New Jersey Department of Transportation

Organization Chart

Administration





State of New Jersey

New Jersey Department of Transportation Organization Chart

Chief of Staff

