

# Product Specifications: FRP Architectural Doors Inc. FR90 Fire Rated FRP Door Series

## Part 1 General – Division 8 - Section 08220 Flush FRP Faced Fire Doors

### 1.1 Section Includes

- A. FRP Fiberglass Clad Faced Fire Doors

### 1.2 Related Sections

- A. Section 08710 Fire Rated Door Hardware
- B. Section 08800 Fire Rated Glass and Glazing
- C. Hollow Metal Fire Rated Frames
- D. Stainless Steel Fire Rated Frames

### 1.3 Related Testing

- A. NFPA-80 (252) Fire Testing for assemblies and devices used to protect openings in walls against the spread of fire and smoke within, into, or out of buildings
- B. UL / UL10C Underwriters Testing Laboratory / Positive Pressure Testing
- C. UBC Standard 7-2 Fire Testing for Door Assemblies
- D. Intertek ETL Listing Independent Testing Laboratory
- E. ASTM E 84 Surface Burning Characteristics of Building Materials.

### 2.1 Products: Fire Rated FRP Clad Faced Fire Door Assembly

- A. Provide door assemblies that have been fabricated to comply with specified performance requirements as demonstrated by testing manufacture's corresponding standards.

### 2.2 Manufacturer

- A. FRP Architectural Doors Inc. - 215-604-1545 - www.FRPARCH.com
- B. Approved Equal – Subject to compliance with product requirements and the owner's decision of a requested substitution.

### 2.3 FRP Flush Fire Rated Doors

- A. Standard Wall Door Series FR90; 1-3/4" thick flush door with fiberglass reinforced polyester (FRP) face sheets.
- B. FRP Face sheets are .120 Thickness, color thru-out, Pebble Embossed Texture
  - 1. Class A FRP; Flame Spread Maximum 25, Smoke Development Maximum 450.
  - 2. Class C FRP; Flame Spread Maximum 200, Smoke Development Maximum 450.
- C. Doors to be Fire Rated in compliance with U.L. or approved equal.
  - 1. Ratings to be 45 minute; 60 minute or 90 minute as scheduled.
- D. 1-1/2" Internal Perimeter and Hardwood Blocking Reinforcements are required to support door hardware, hinges, closers and latching.
- E. Doors core for Interior or Exterior 90 Minute Rating to be Mineral, 30lb PCF Density; 1-1/2" Thickness
- F. Optional Interior door core to be 45 Minute Rating to be Particle, 32lb PCF Density; 1-1/2" Thickness
- F. Stainless Steel Perimeter Channel for exterior doors, to be sealed, 304 grade, 3/4" x 1 7/8" wide.
- G. Optional Matching FRP edges around perimeter for interior doors to be used on all 4 sides.
- H. Vision Lights and Louvers are to be metal; by Air Louver Inc. or approved equal. All metal lights and louvers to be fire rated.

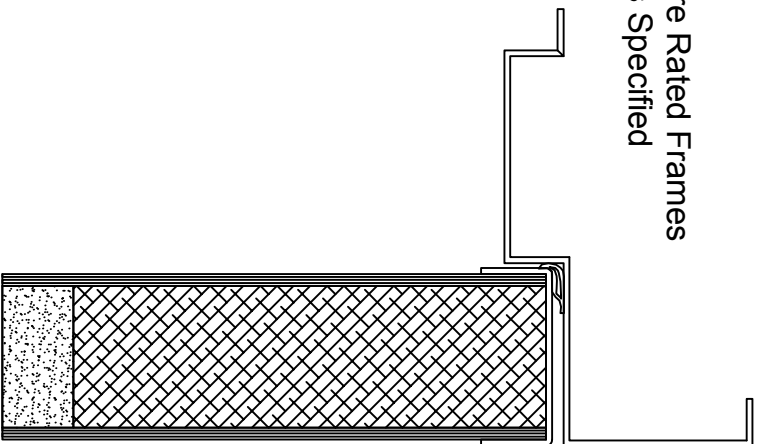
### 3.1 Installation

- A. Factory Prep doors for cutouts and mortised door hardware.
- B. Install doors into fire rated framing per manufacturer's instructions.
- C. Field Install door hardware and adjust for smooth operation.

### 3.2 Warranty

- A. Provide 10 year warranty Period.

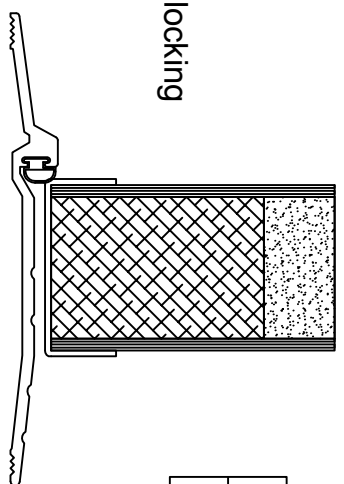
Fire Rated Frames  
as Specified



1	FD-1
---	------

FR90 Door  
Top Rail  
5" Closer Blocking

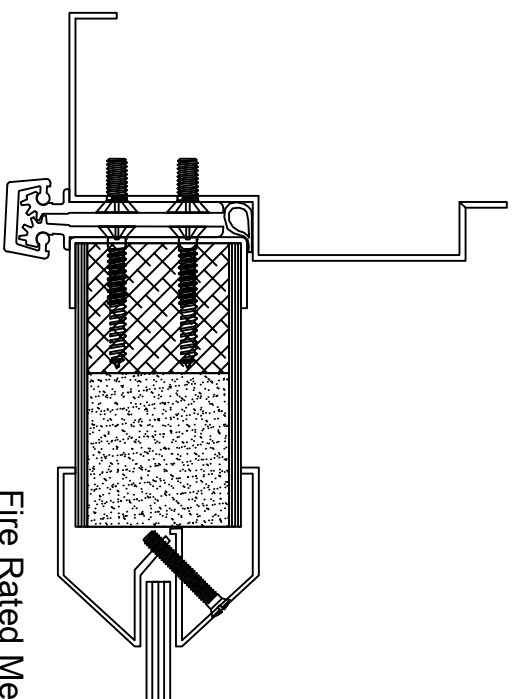
90 Minute Mineral Core



2	FD-1
---	------

FR90 Door  
Bottom Rail

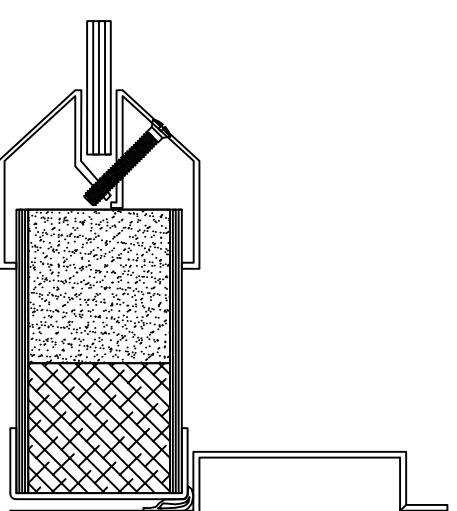
\*Weatherstrip smoke gaskets are by Hardware Supplier  
\*Threshold by others-see hardware schedule



3	FD-1
---	------

FR90 Door  
Hinge Stile

Fire Rated Metal Vision lights  
Primed Metal or Optional Stainless Steel



2	FD-1
---	------

FR90 Door  
Lock Stile

Perimeter Stainless Steel Edges  
Factory Sealed and Secured Place