

*Agency Coordination Meeting #2*

# I-295/I-76/Route 42 Interchange Reconstruction

## PRESENTATION OUTLINE

*Project Flow Chart*

*Constraints Maps*

*Alternatives*

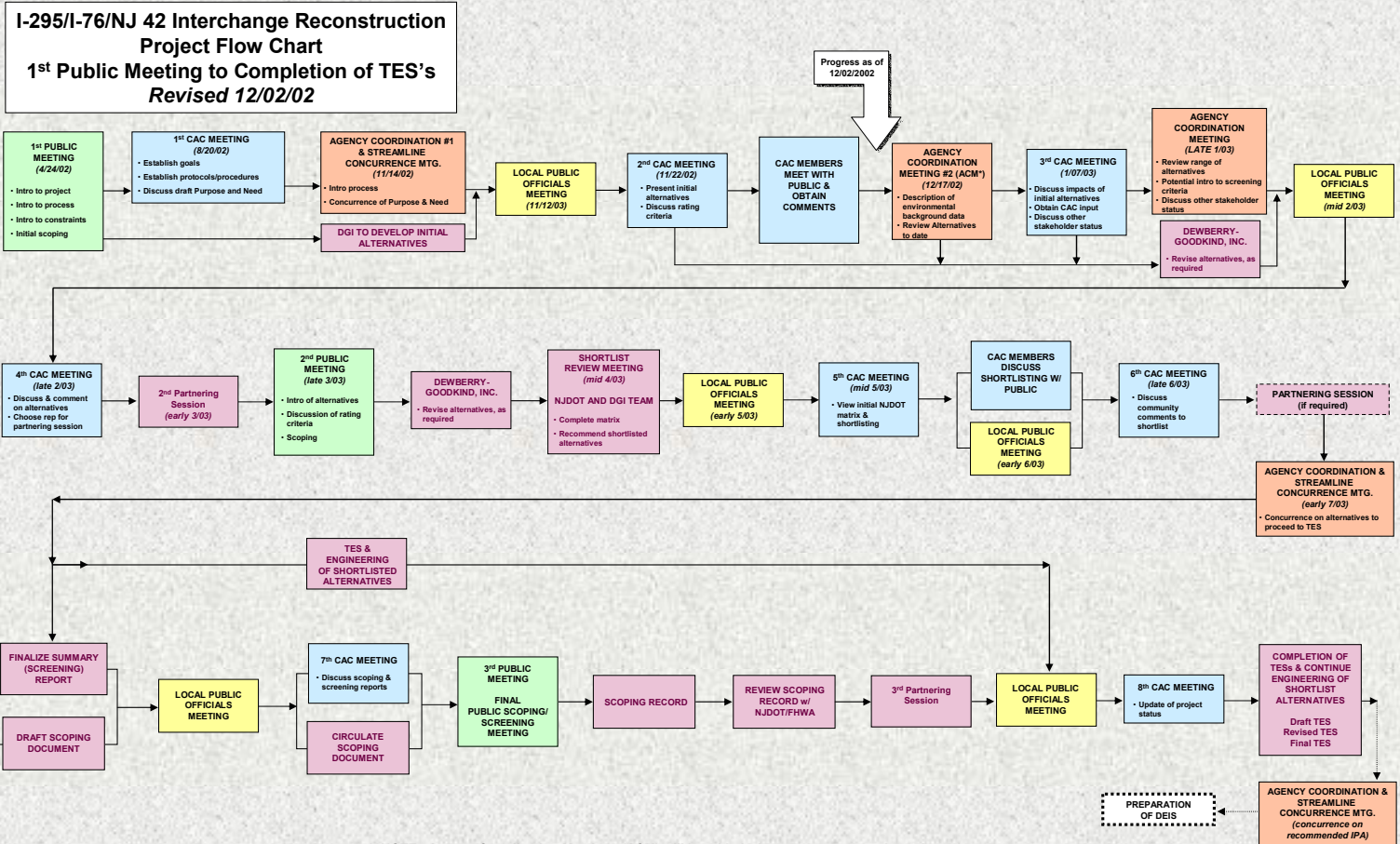
December 17, 2002

Presented by Nick Caiazza – NJ Department of Transportation

Charles Meidhof, **Dewberry-Goodkind, Inc.**



# Flow Chart





# PROJECT AREA



Project Screening  
Study Area Boundary

## LEGEND

Project Screening Study Area Boundary

1000 0 1000 2000 3000 4000 Feet



New Jersey Department of Transportation

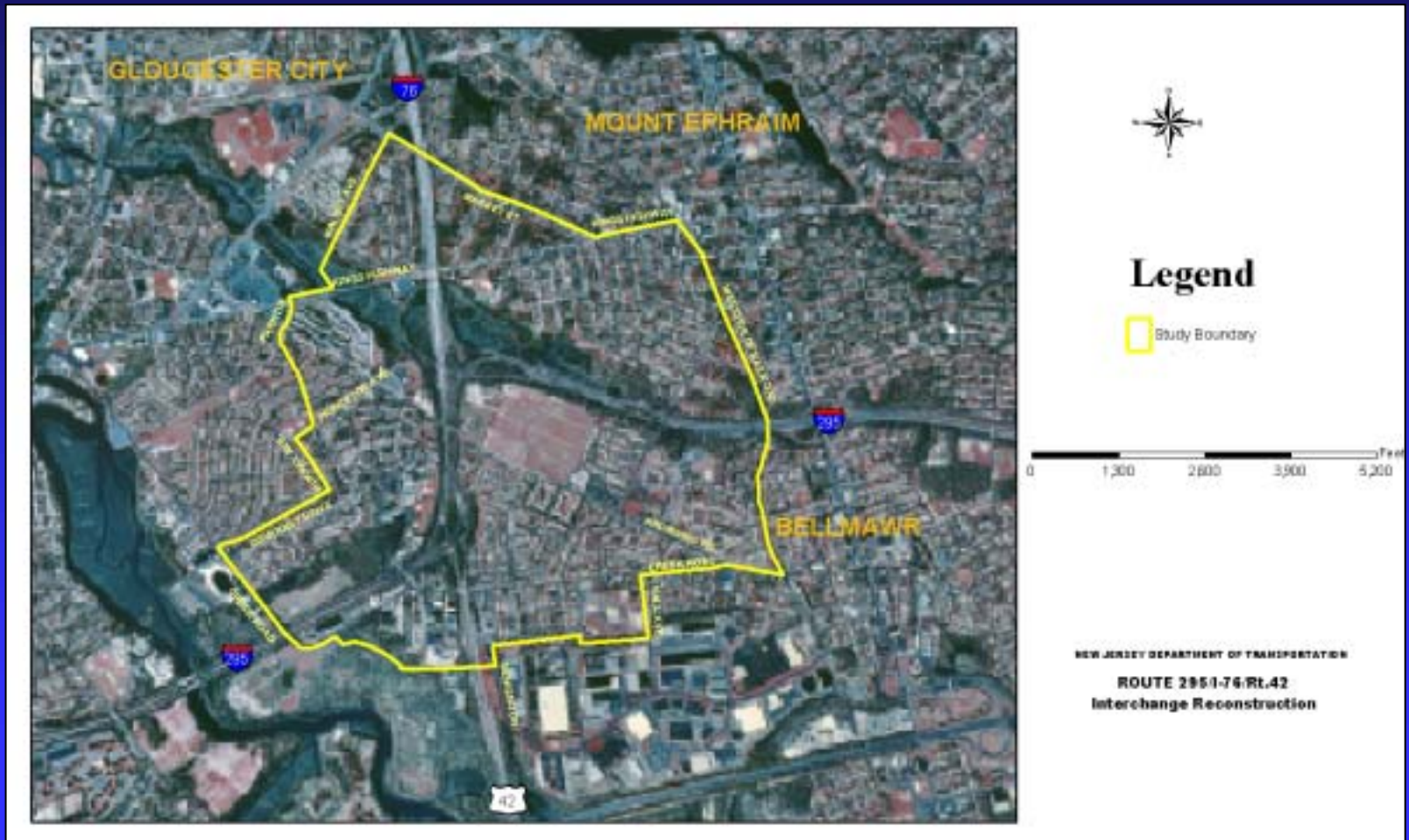
I-295/I-76/RT. 42  
INTERCHANGE  
RECONSTRUCTION  
SUMMARY REPORT

FIGURE 1

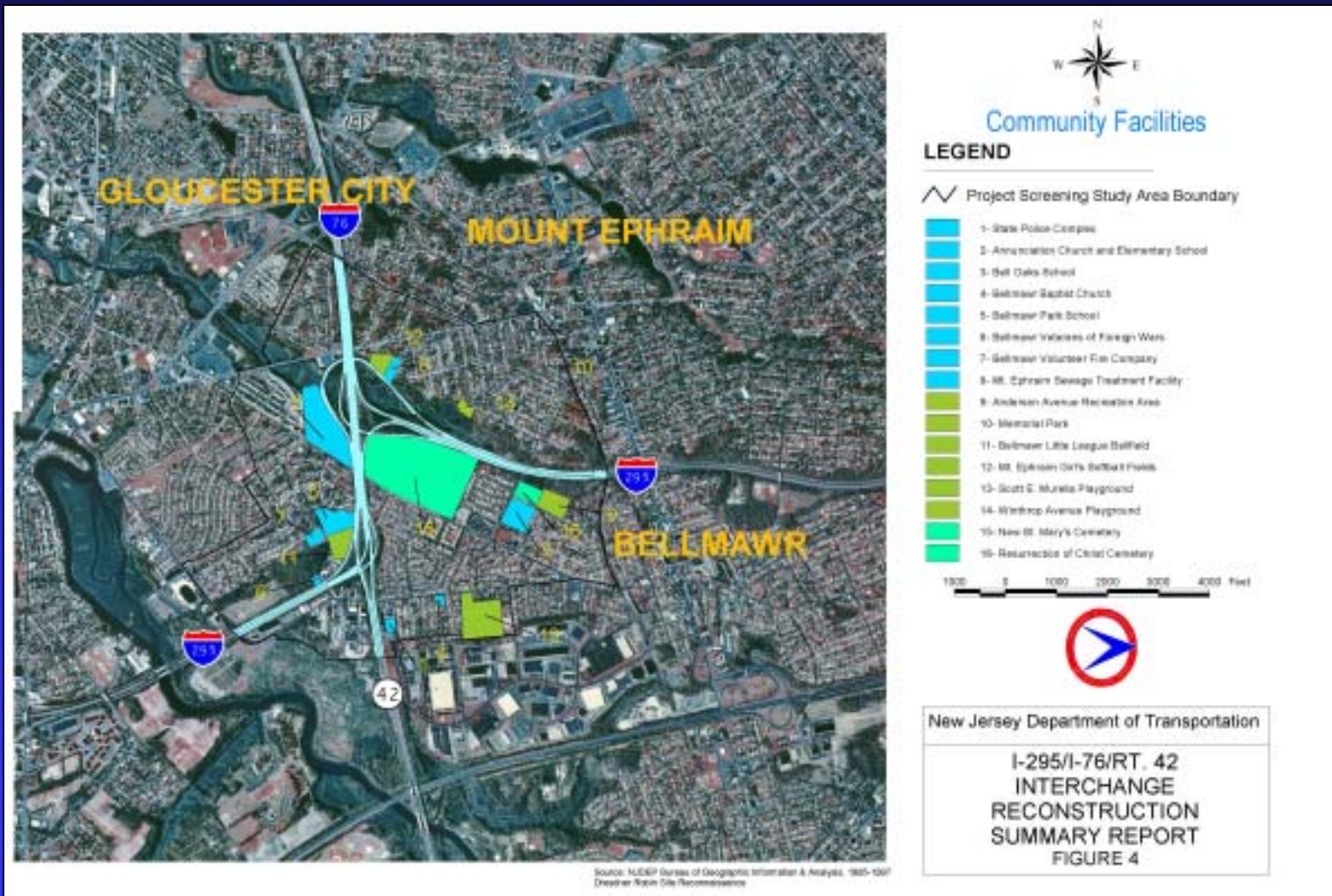
Source: NJDEP Bureau of Geographic Information  
& Analysis, 1999, 1997



# STUDY BOUNDARY



# COMMUNITY FACILITIES



# LAND USE



Land Use

## LEGEND

-  Project Screening Study Area Boundary
-  Commercial
-  Industrial
-  Recreation/Athletic Fields
-  Residential
-  Public/Institutions
-  Cemetery
-  Vacant
-  Proposed Development

1000 0 1000 2000 3000 4000 Feet



New Jersey Department of Transportation

I-295/I-76/RT. 42  
INTERCHANGE  
RECONSTRUCTION  
SUMMARY REPORT  
FIGURE 3

Source: NACEP, Bureau of Geographic Information & Analysis, 1995, 2007  
MTO Director, Robert J. Mucciarone

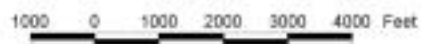
# CULTURAL RESOURCES



Cultural Resource Sensitive Areas

### LEGEND

- Project Screening Study Area Boundary
- High Historic Sensitivity
- Medium Historic Sensitivity
- High Prehistoric Sensitivity
- Medium Prehistoric Sensitivity



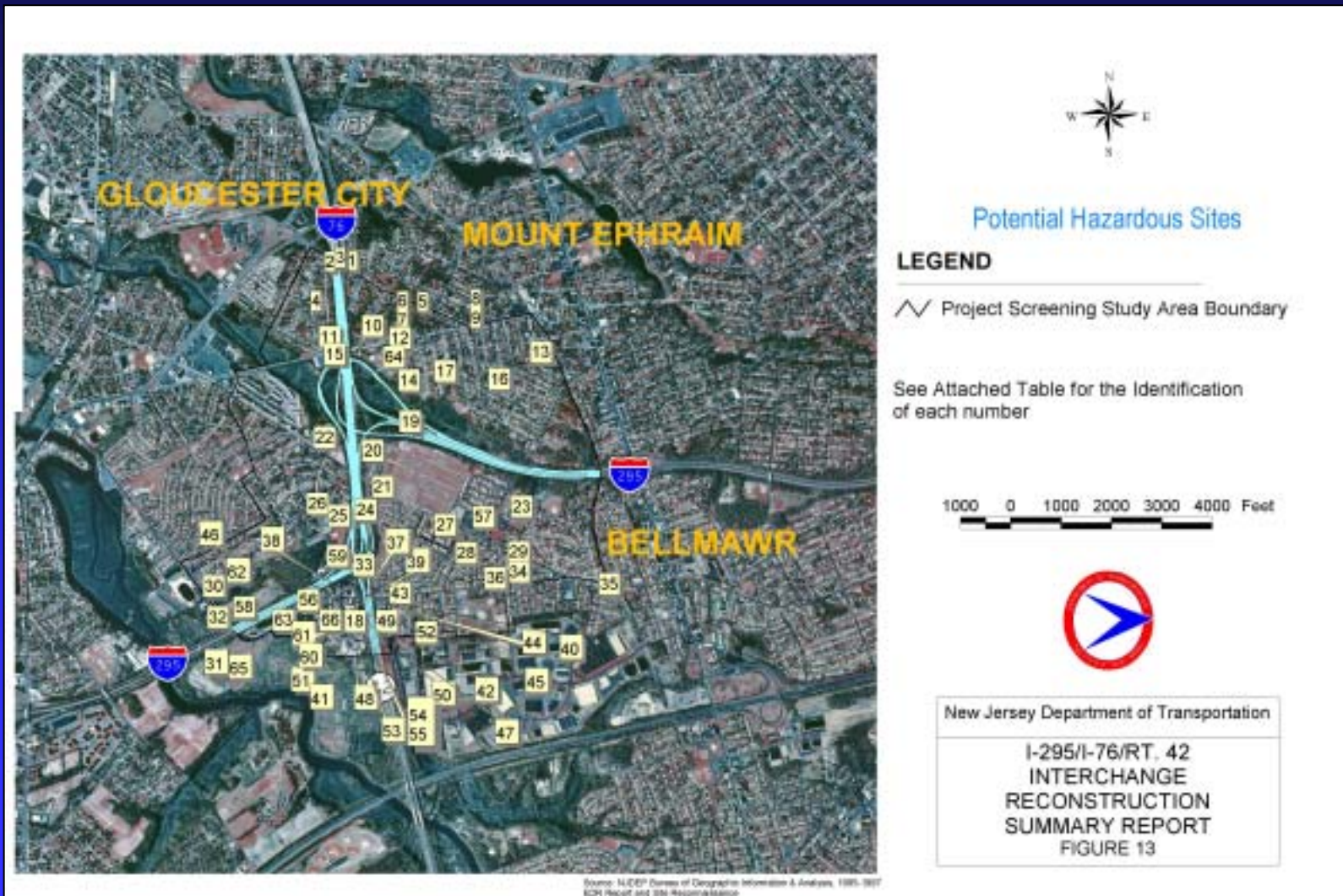
New Jersey Department of Transportation

I-295/I-76/RT. 42  
INTERCHANGE  
RECONSTRUCTION  
SUMMARY REPORT  
FIGURE 11

Source: A.D. Swaine and MCBP Bureau of Geographic Information & Analysis, 10/05-1/07



# POTENTIAL HAZARDOUS SITES



# MINORITY POPULATIONS



## Minority Populations

### LEGEND

- Project Screening Study Area Boundary
- 2000 Census Tracts
- Block 3012 2000 Blocks
- Less Than 10 %
- 10 to 30%

1000 0 1000 2000 3000 4000 Feet



New Jersey Department of Transportation

I-295/I-76/RT. 42  
INTERCHANGE  
RECONSTRUCTION  
SUMMARY REPORT  
FIGURE 5

Source: NJCEP Bureau of Geographic Information & Analysis, 1999-2007  
and Director Robert Site Reconnaissance  
US Bureau of the Census, 2000

# NOISE MONITORING LOCATIONS



Noise Monitoring Locations

## LEGEND

Project Screening Study Area Boundary

Noise Monitoring Location

1000 0 1000 2000 3000 4000 Feet



New Jersey Department of Transportation

I-295/I-76/RT. 42  
INTERCHANGE  
RECONSTRUCTION  
SUMMARY REPORT  
FIGURE 8

Source: Paul Computer Associates, Inc. and  
FLS&P Bureau of Geographic Information & Analysis, 1991/1997

# NOISE SENSITIVE LAND USE






## Noise Sensitive Land Use

### LEGEND

∩ Project Screening Study Area Boundary

FHWA Land Use  
Activity Category

-  B- Residential, schools, places of worship and recreational areas
-  C- Commercial/Industrial
-  E- Interior churches, schools and auditoriums

1000 0 1000 2000 3000 4000 Feet

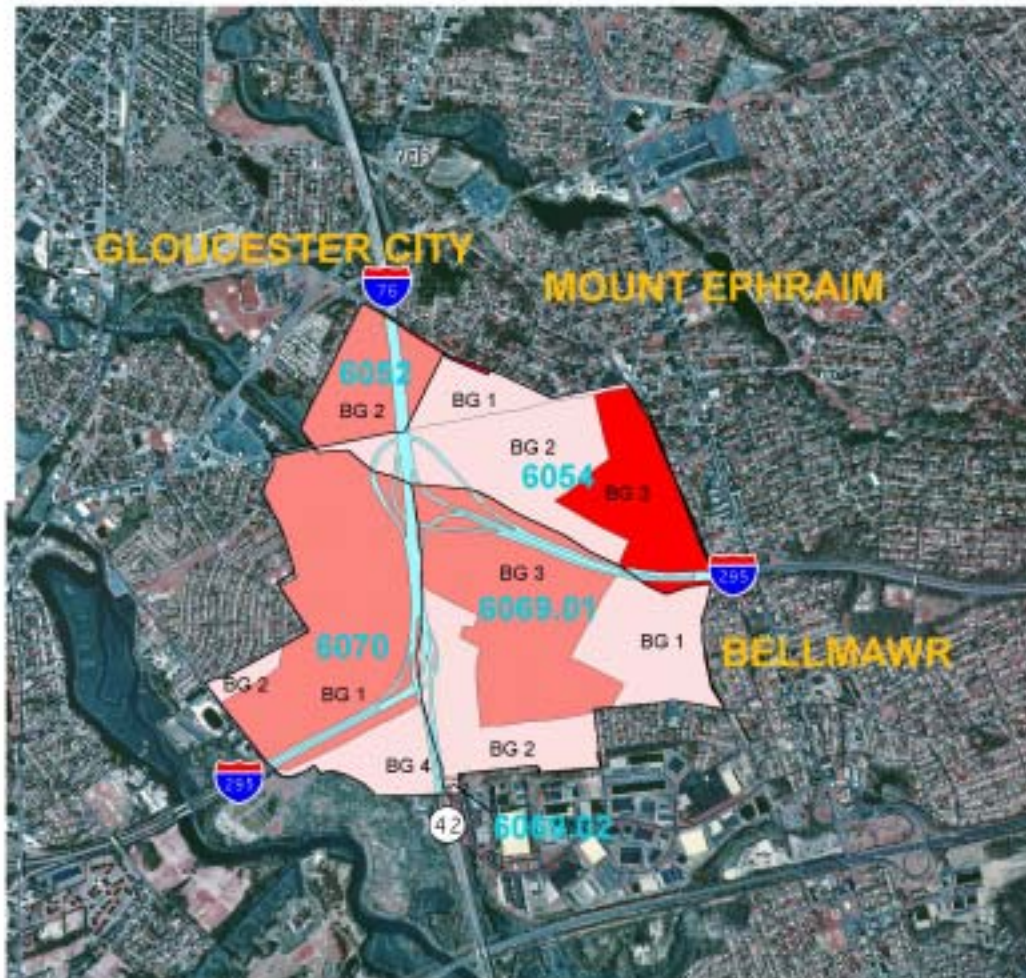


New Jersey Department of Transportation

I-295/I-76/RT. 42  
INTERCHANGE  
RECONSTRUCTION  
SUMMARY REPORT  
FIGURE 7

Source: Peia Carpenter Associates, Inc. and  
NCEP Bureau of Geographic Information & Analysis, 10/05-10/07

# POVERTY LEVEL



Source: NJCEP Bureau of Geographic Information & Analysis, 1990-2007  
 Director: Robt. Site Reconnaissance  
 US Bureau of the Census, 1990



Poverty Level

## LEGEND

- Project Screening Study Area Boundary
- 1990 Census Tracts
- BG 1 1990 Block Groups

### Percent Below the Poverty Level

- 0 - 4.99 Percent
- 5 - 9.99 Percent
- 10 - 15 Percent

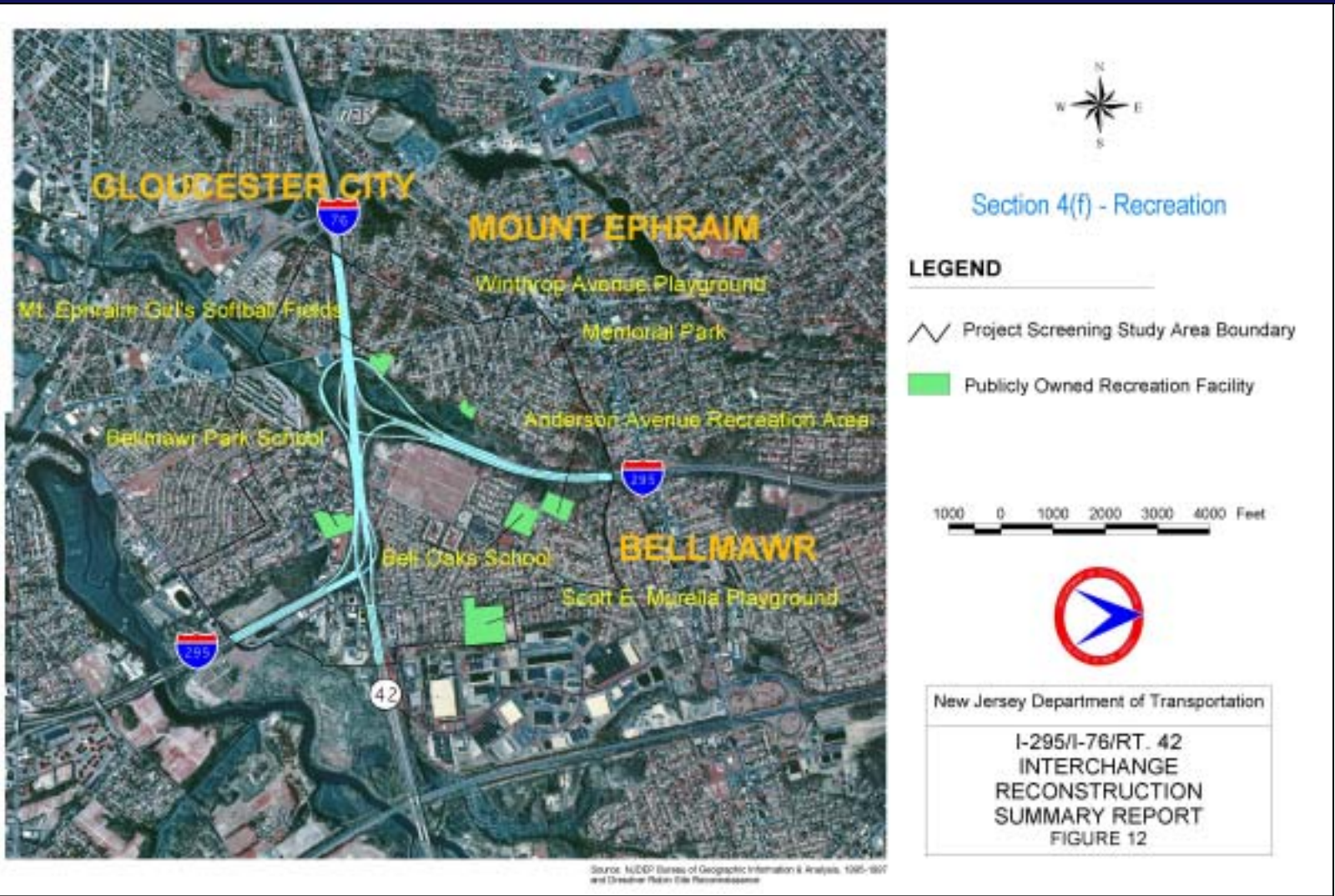
1000 0 1000 2000 3000 4000 Feet



New Jersey Department of Transportation

I-295/I-76/RT. 42  
 INTERCHANGE  
 RECONSTRUCTION  
 SUMMARY REPORT  
 FIGURE 6

# SECTION 4(f) - RECREATION



# NATURAL VEGETATION



# WETLANDS



## LEGEND

Project Screening Study Area Boundary

Tidal Wetlands

Tidal Marshes

Freshwater Wetlands

Mixed Forest

Scrub/Shrubland

Herbaceous

Wetlands Buffer

30 Foot Freshwater Wetlands Buffer

1000 0 1000 2000 3000 4000 Feet



New Jersey Department of Transportation

I-295/I-76/RT. 42  
INTERCHANGE  
RECONSTRUCTION  
SUMMARY REPORT  
FIGURE 10

Source: NJDEP Bureau of Geographic Information & Analysis, 1999-2007  
Designer: Robin Site Recommendations



# ALTERNATIVE A



## ALTERNATIVE A

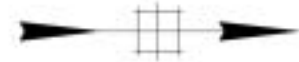
- Shifts I-295 to the west side of Rt.42-76 toward Bellmawr Park
- Northbound and Southbound I-295 are side-by-side.
- I-295 3rd Level Waduct over Ramp C and Browning Road
- I-295 3rd Level Waduct over Ramp A and Ramp D
- Removes express/local lanes on I-76 Westbound
- I-295 Posted Speed Limit: 55 mph
- Ramp Speed Limits: 40 mph

**A** ← RAMP DESIGNATION

**PRELIMINARY  
I-295 / I-76 / ROUTE 42  
INTERCHANGE RECONSTRUCTION PROJECT  
ALTERNATIVE A**



# ALTERNATIVE B



## ALTERNATIVE B

- Shifts I-295 to the east side of RL-63-76
- Shifts I-295 North toward Mt. Ephraim
- Northbound and Southbound I-295 are side-by-side
- I-295 3rd Level Viaduct over Ramp A and Ramp D
- Removes express/local lanes on I-76 Westbound
- I-295 Posted Speed Limit: 55 mph
- Ramp Speed Limits: 40 mph

**A** — RAMP DESIGNATION

**PRELIMINARY**  
**I-295 / I-76 / ROUTE 42**  
**INTERCHANGE RECONSTRUCTION PROJECT**  
**ALTERNATIVE B**

# ALTERNATIVE C



## ALTERNATIVE C

- Northbound and Southbound I-295 are side-by-side.
- I-295 placed above Rt.438-76.
- I-295 3rd Level Viaduct over Ramp C and Browning Road
- I-295 3rd Level Viaduct over Ramp A and Ramp D
- I-295 shifts north toward Mt. Ephraim
- Removes express/local lanes on I-76 Westbound
- I-295 Posted Speed Limit: 55 mph
- Ramp Speed Limits: 40 mph

 - RAMP DESIGNATION

**PRELIMINARY**  
**I-295 / I-76 / ROUTE 42**  
**INTERCHANGE RECONSTRUCTION PROJECT**  
**ALTERNATIVE C**



# ALTERNATIVE D



## ALTERNATIVE D

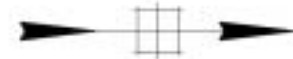
- Northbound and Southbound I-295 are side-by-side
- Shifts I-295 over parts of both the ballpark and the cemetery
- I-295 crosses Rt.42/I-76 on a skew
- I-295 3rd Level Viaduct over Ramp C and Browning Road
- Ramp D 3rd Level Viaduct over I-76/Rt. 42 and Ramp C
- Removes express/lane lines on I-76 westbound
- I-295 Posted Speed Limit: 55 mph
- Ramp Speed Limits: 40 mph

**A** ← RAMP DESIGNATION

**PRELIMINARY**  
**I-295 / I-76 / ROUTE 42**  
**INTERCHANGE RECONSTRUCTION PROJECT**  
**ALTERNATIVE D**



# ALTERNATIVE E



## ALTERNATIVE E

- Northbound and southbound I-295 are side-by-side.
- I-295 3rd Level Viaduct over I-76R, 42 and Ramp E
- I-295 follows the most direct path
- Removes express/local lanes on I-76 westbound
- I-295 Posted Speed Limit: 65 mph
- Ramp Speed Limits: 40 mph

**A** — RAMP DESIGNATION

**PRELIMINARY  
I-295 / I-76 / ROUTE 42  
INTERCHANGE RECONSTRUCTION PROJECT  
ALTERNATIVE E**



# ALTERNATIVE F



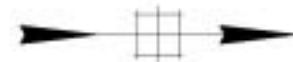
## ALTERNATIVE F

- Northbound and Southbound I-295 follow separate alignments.
- Northbound I-295 shifted to east side of Rt. 42/I-76.
- Southbound I-295 shifted to west side of Rt. 42/I-76.
- I-295 Northbound 3rd Level Viaduct over Ramp A and Browning Road
- I-295 Southbound 3rd Level Viaduct over Ramp A and Ramp D
- Removes express/local lanes on I-76 westbound
- I-295 Posted Speed Limit: 55 mph
- Ramp Speed Limits: 40 mph

**A** ← RAMP DESIGNATION

**PRELIMINARY**  
**I-295 / I-76 / ROUTE 42**  
**INTERCHANGE RECONSTRUCTION PROJECT**  
**ALTERNATIVE F**

# ALTERNATIVE G



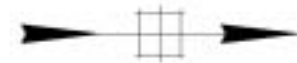
## ALTERNATIVE G

- Northbound I-295 placed above Southbound I-295 using a Double-Decker Configuration
- I-295 4th Level Viaduct over Ramp A and Browning Road
- I-295 4th Level Viaduct over Ramp C and Ramp F
- I-295 3rd Level Viaduct over Ramp AD
- I-295 3rd Level Viaduct over Ramp BC
- I-295 3rd Level Viaduct over I-76/Rt. 42
- Ramp C has a left hand exit
- Removes express/local lanes on I-76 westbound
- I-295 Posted Speed Limit: 55 mph
- Ramp Speed Limits: 40 mph

**A** — RAMP DESIGNATION

**PRELIMINARY  
I-295 / I-76 / ROUTE 42  
INTERCHANGE RECONSTRUCTION PROJECT  
ALTERNATIVE G**

# ALTERNATIVE H



## ALTERNATIVE H

- Northbound I-295 placed above Southbound I-295 using a Double-Decker Configuration
- I-295 4th Level Viaduct over Ramp A and Browning Road
- I-295 4th Level Viaduct over Ramp C and Ramp F
- I-295 3rd Level Viaduct over Ramp AD
- I-295 3rd Level Viaduct over Ramp BC
- I-295 3rd Level Viaduct over I-76 Rt. 42
- Ramp C 3rd Level Viaduct over I-76 Rt. 42 and Ramp D
- Removes express/local lanes on I-76 westbound
- I-295 Posted Speed Limit: 55 mph
- Ramp Speed Limits: 40 mph

**A** — RAMP DESIGNATION

**PRELIMINARY  
I-295 / I-76 / ROUTE 42  
INTERCHANGE RECONSTRUCTION PROJECT  
ALTERNATIVE H**





# ALTERNATIVE I



## ALTERNATIVE I

- Northbound and Southbound I-295 are side-by-side.
- I-295 crosses the cemetery.
- Removes express/local lanes on I-76 westbound.
- I-295 Posted Speed Limit 55 mph.
- Ramp Speed Limits 40 mph.

**A** — RAMP DESIGNATION

**PRELIMINARY**  
**I-295 / I-76 / ROUTE 42**  
**INTERCHANGE RECONSTRUCTION PROJECT**  
**ALTERNATIVE I**



# ANY QUESTIONS?

