

Community Advisory Committee Meeting #6

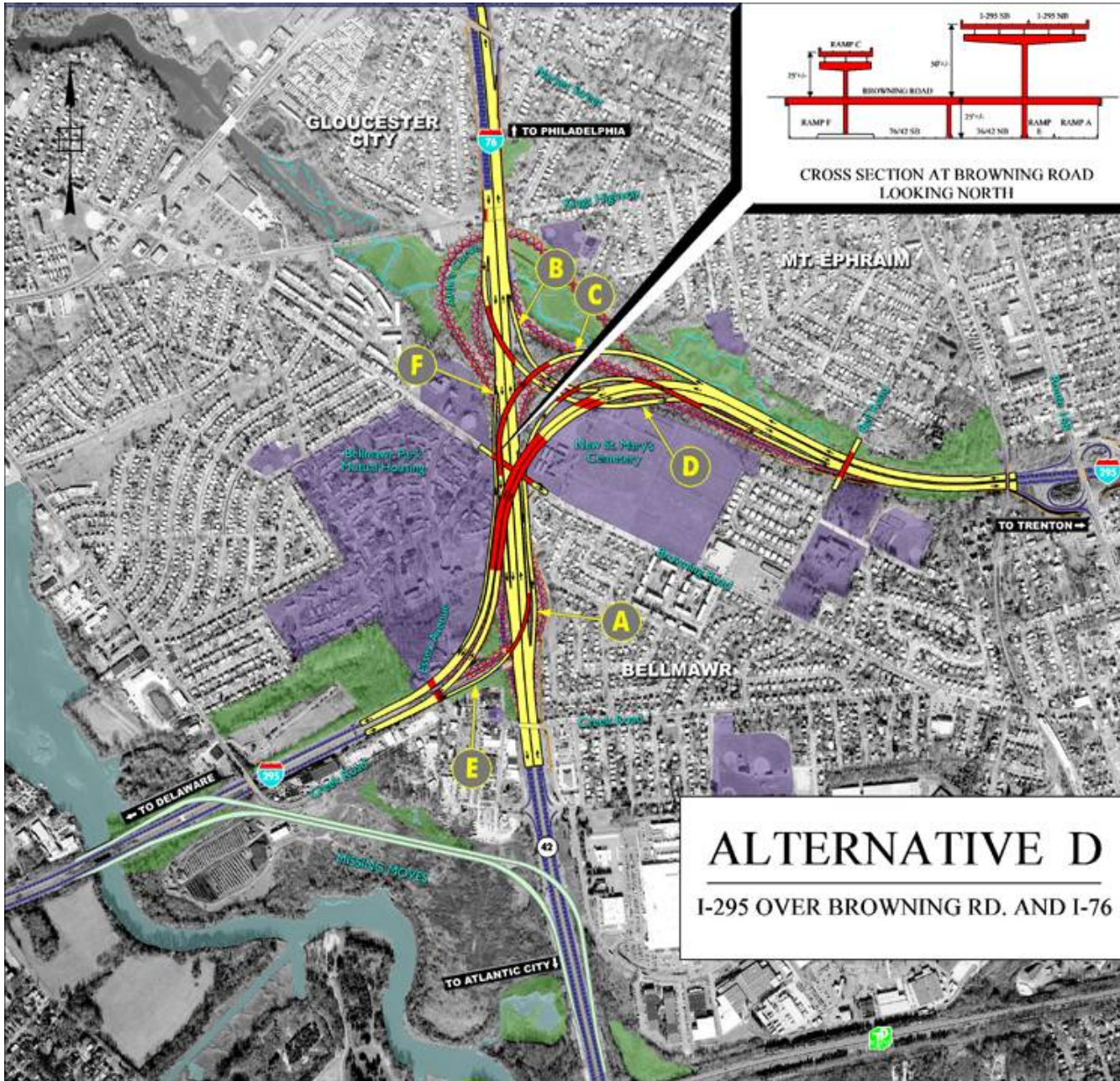
**I-295/I-76/Route 42
Direct Connection**

Camden County

November 10, 2004

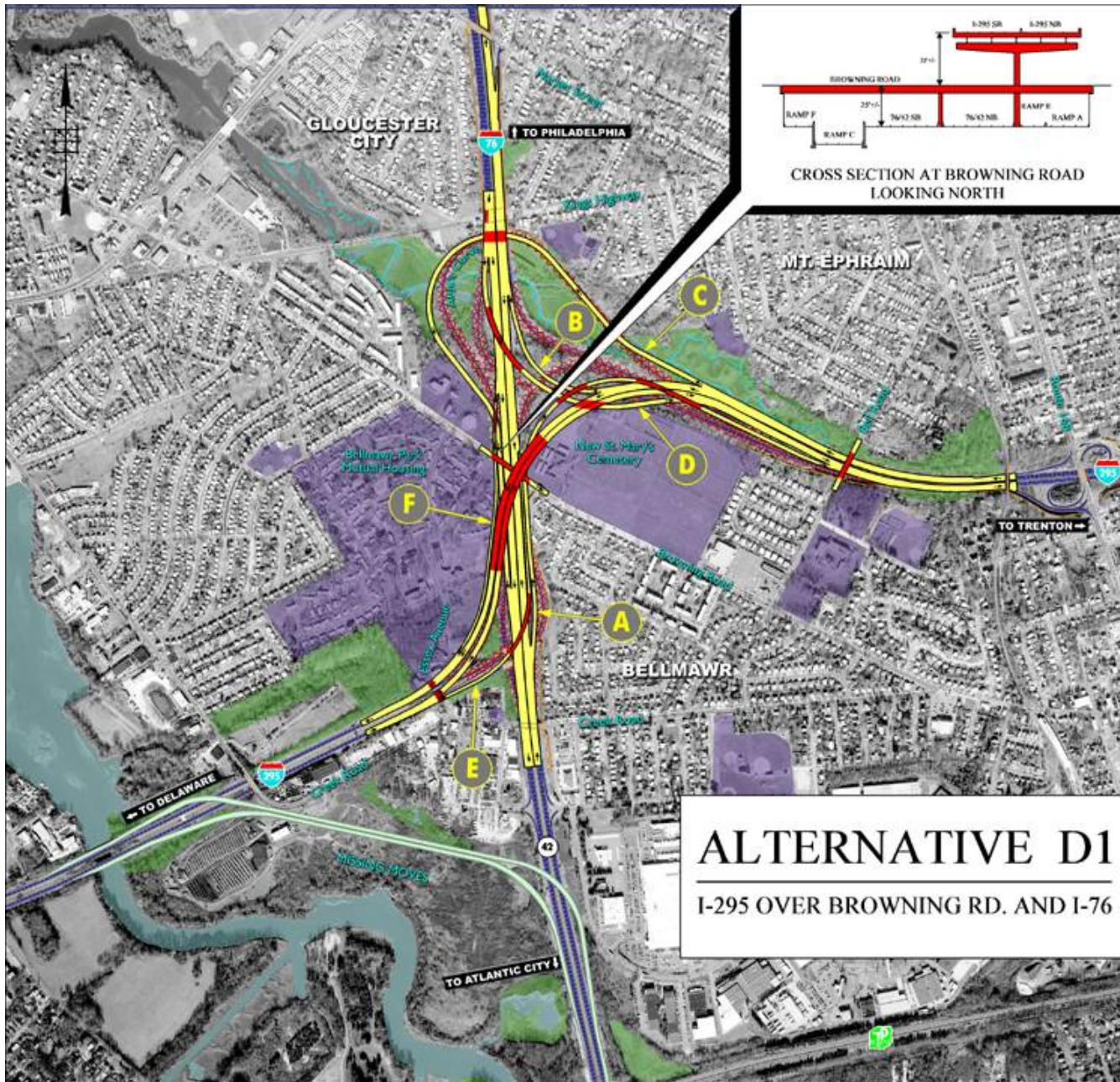
Presented by NJ Department of Transportation





ALTERNATIVE D

- Shifts I-295 over parts of both the ballpark and the cemetery
- I-295 crosses Route 42/I-76 on a skew
- I-295 on Bridge over Ramp C and Browning Road
- Ramp D on Bridge over I-76/Route 42 and Ramp C

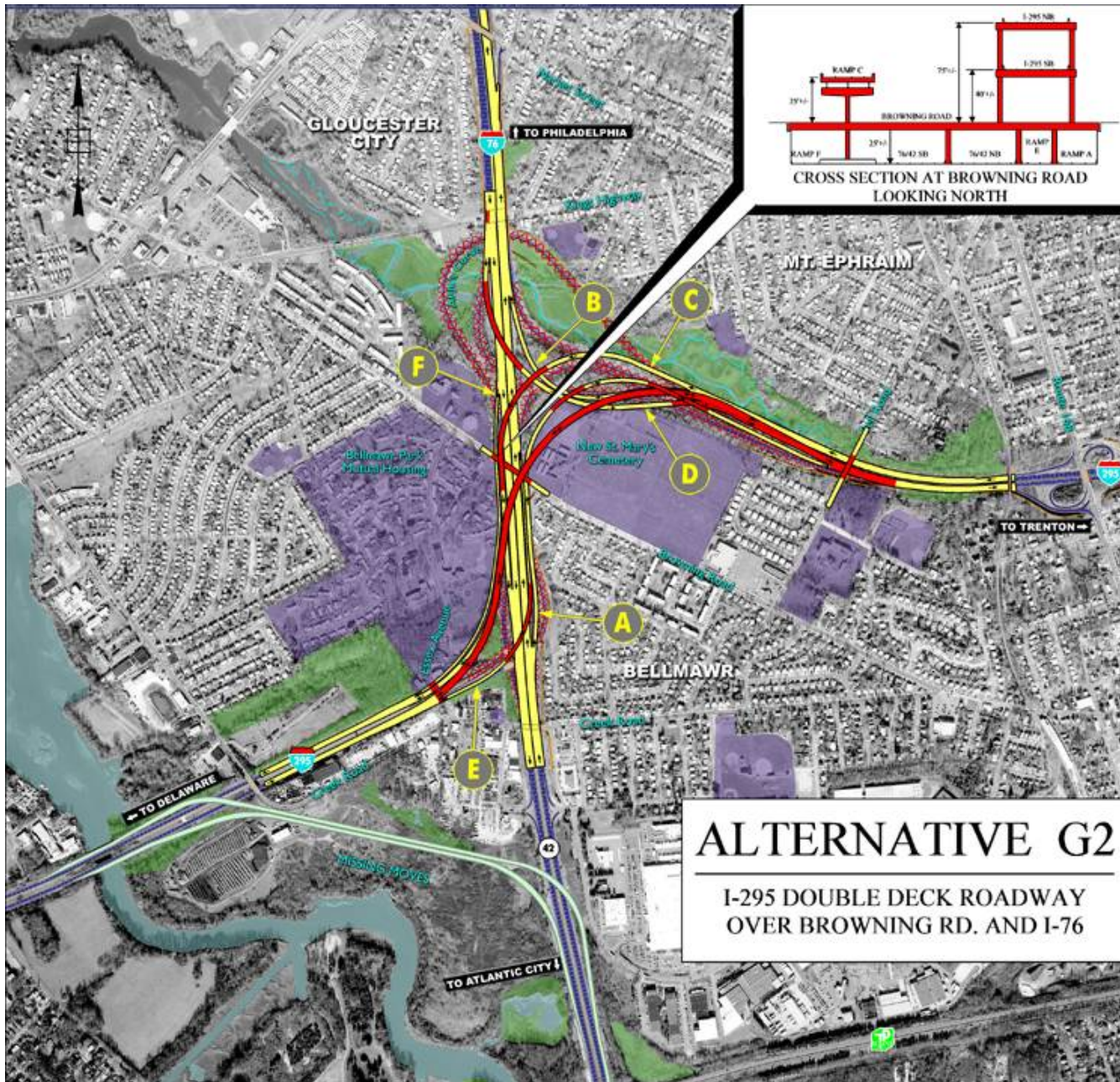


ALTERNATIVE D1 (Revised Ramp C)

- Northbound and southbound I-295 are side-by-side
- Shifts I-295 over parts of both the ballpark and the cemetery
- I-295 crosses Rt. 42/I-76 on a skew
- I-295 3rd Level Viaduct over Ramp C and Browning Road
- Ramp D 3rd Level Viaduct over I-76/Rt. 42 and Ramp C
- Removes express/local lanes on I-76 westbound
- I-295 Posted Speed Limit: 55 mph
- Ramp Posted Speed Limit: 40 mph

LEGEND

- Ramp Designation
- Roadway
- Bridge
- Underpass / Tunnel
- Ramps Constructed under Missing Moves Project
- Roadway to be Removed
- Existing Resources
- Wetlands (approx.)
- Existing Roads and Shoulders

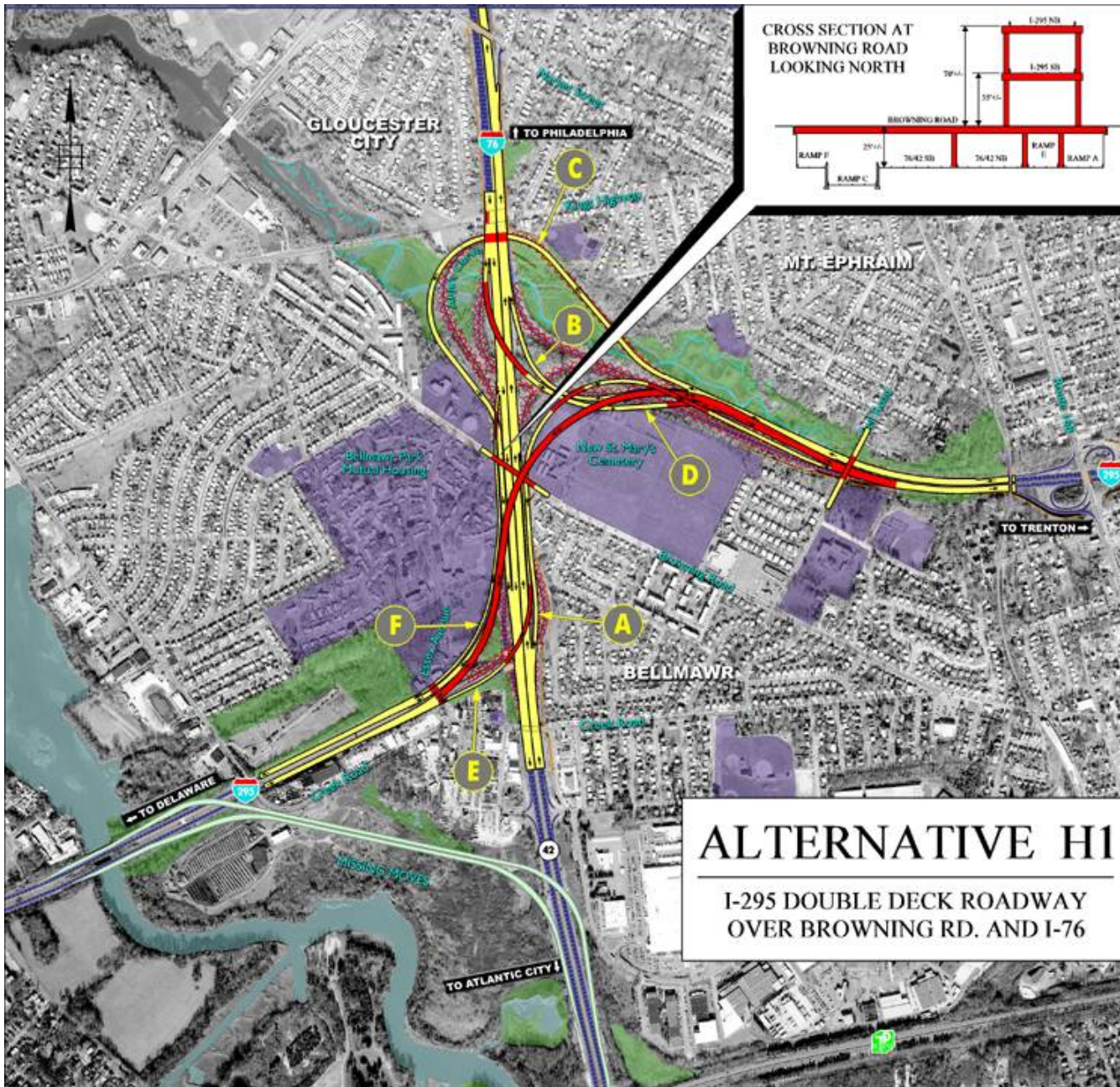


ALTERNATIVE G2

I-295 DOUBLE DECK ROADWAY OVER BROWNING RD. AND I-76

- ALTERNATIVE G2**
- NB I-295 placed above SB
 - I-295 using a Double-Decker Configuration
 - I-295 on Bridge over Ramp A and Browning Road
 - I-295 on Bridge over Ramp C and Ramp F
 - I-295 on Bridge over Ramp A/D
 - I-295 on Bridge over Ramp B/C
 - I-295 on Bridge over I-76/Route 42
 - Ramp C has a left-hand exit

- LEGEND**
- ← **A** - Ramp Designation
 - Yellow Box - Roadway
 - Red Box - Bridge
 - Dashed Line - Underpass / Tunnel
 - Light Green Box - Ramps Constructed under Missing Moves Project
 - Red X Pattern - Roadway to be Removed
 - Purple Box - Existing Resources
 - Green Box - Wetlands (approx.)
 - Blue Box - Existing Roads and Shoulders

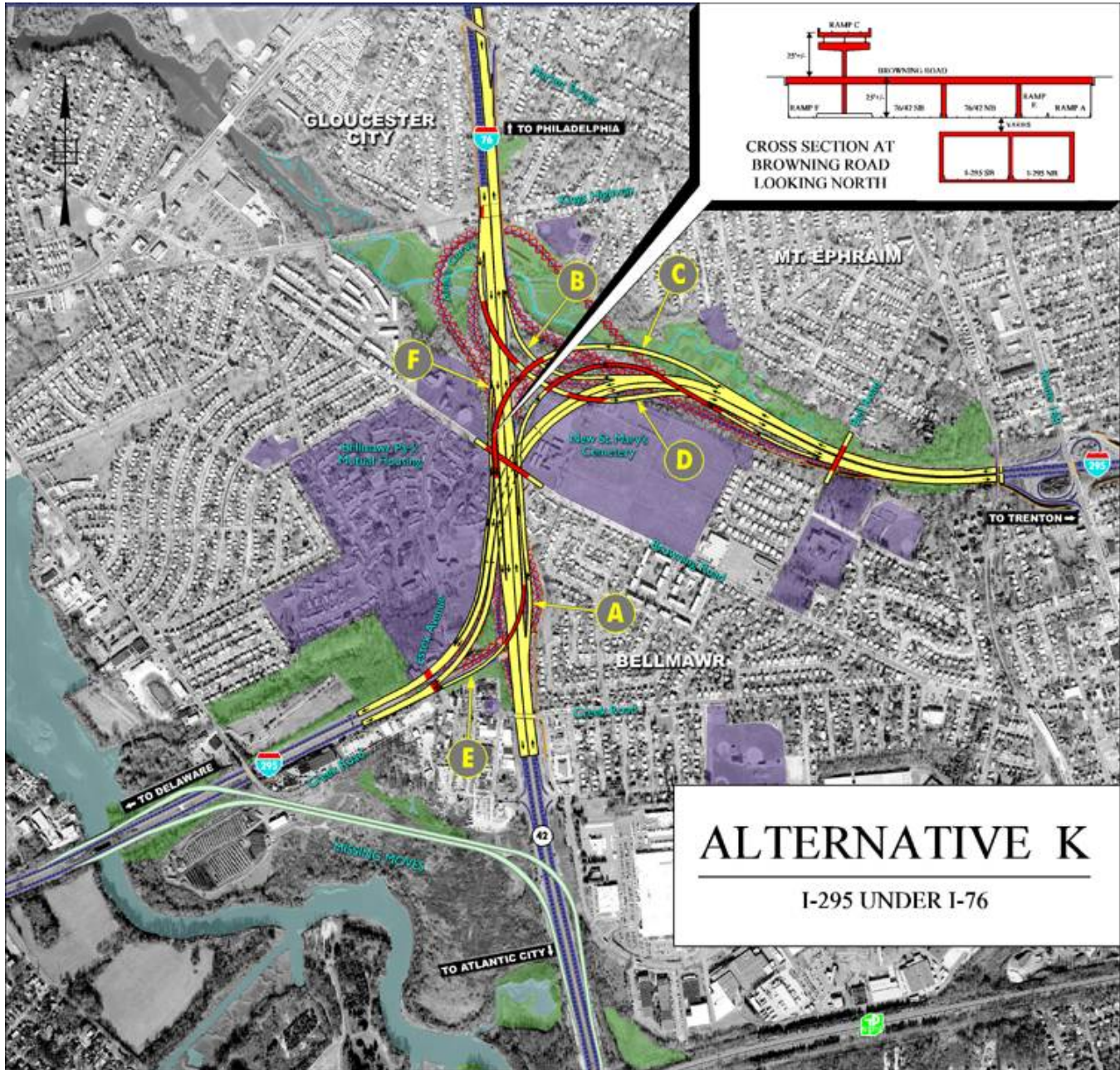


ALTERNATIVE H1 (Revised Ramp C)

- Northbound I-295 placed above Southbound I-295 using a Double-Decker Configuration
- I-295 on Viaduct over Ramp A and Browning Road
- I-295 on Viaduct over Ramp C and Ramp F
- I-295 on Viaduct over Ramp A/D
- I-295 on Viaduct over Ramp B/C
- I-295 on Viaduct over I-76/Rt. 42
- Ramp C on Viaduct over I-76/Rt. 42 and Ramp D
- Removes express/local lanes on I-76 westbound
- I-295 Posted Speed Limit: 55 mph
- Ramp Posted Speed Limit: 40 mph

LEGEND

- Ramp Designation
- Roadway
- Bridge
- Underpass / Tunnel
- Ramps Constructed under Missing Moves Project
- Roadway to be Removed
- Existing Resources
- Wetlands (approx.)
- Existing Roads and Shoulders



ALTERNATIVE K

- Based on Alternative D alignment
- Carries I-295 in a Tunnel underneath I-76/Route 42

LEGEND

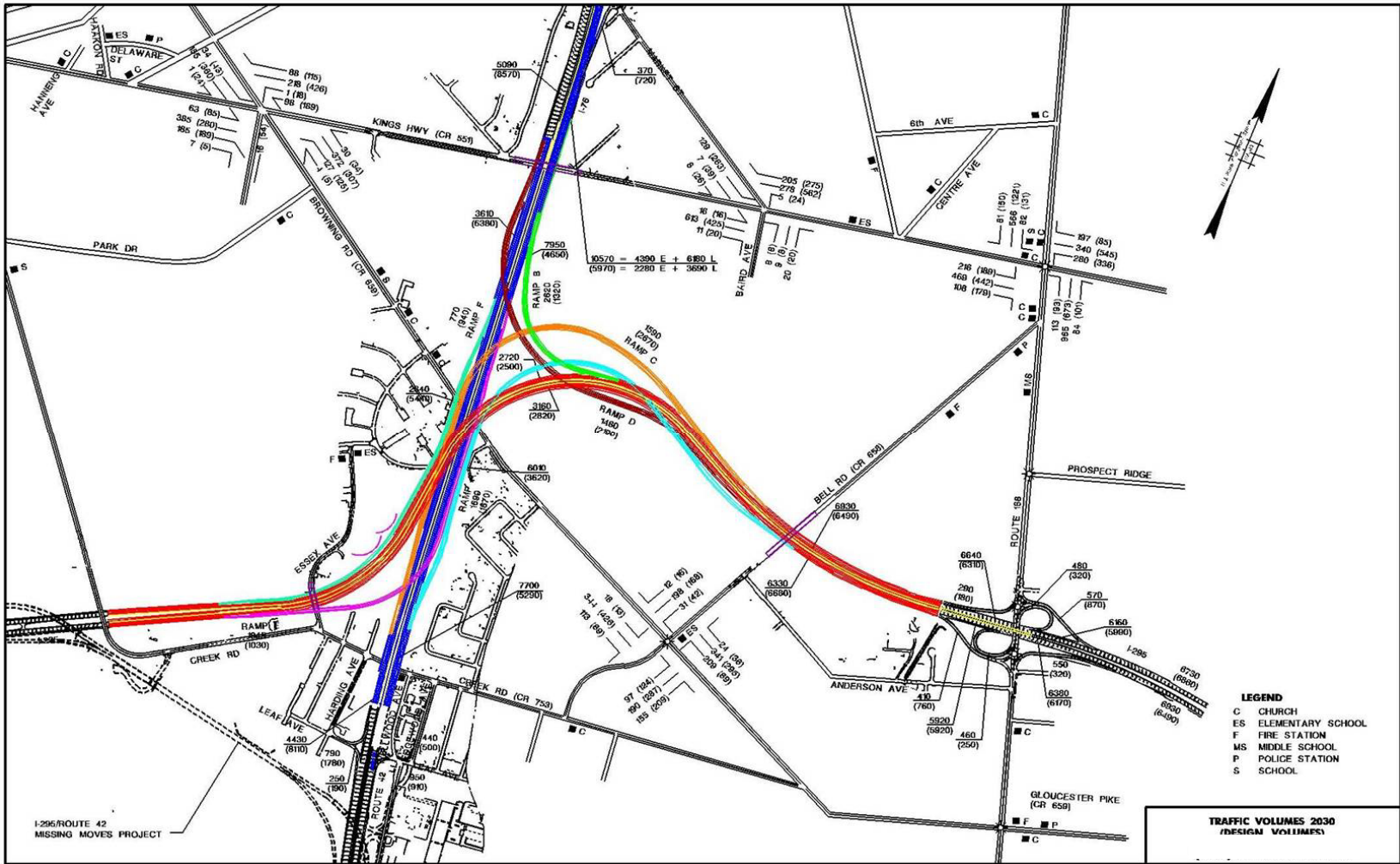
- Ramp Designation
- Roadway
- Bridge
- Underpass / Tunnel
- Ramps Constructed under Missing Moves Project
- Roadway to be Removed
- Existing Resources
- Wetlands (approx.)
- Existing Roads and Shoulders

I-295/I-76/Route 42 Direct Connection

Camden County

2030 PEAK HOUR VOLUMES

www.state.nj.us/transportation/works/studies/rt295



I-295/I-76/Route 42 Direct Connection

Camden County

www.state.nj.us/transportation/works/studies/rt295

WETLANDS



Wetlands

- Legend**
- Herbaceous
 - Scrub/Shrub
 - Mixed Forest
 - Tidal Marshes
 - 50 Foot Wetlands Buffer
 - Project Screening Study Area Boundary
 - Municipal Boundary

Source: NJDEP Bureau of Geographic Information & Analysis, 1985-1997
Dredger Basin Site Reconnaissance



I-295/I-76/Route 42 Direct Connection

Camden County

www.state.nj.us/transportation/works/studies/rt295

FLOODPLAINS



Floodplains

- Legend**
- Project Screening Study Area Boundary
 - Municipal Boundary
 - 100 Year Floodplain



Source: NJDEP Bureau of Geographic Information & Analysis, 1995-1997
Deborah Rubin Site Reconnaissance

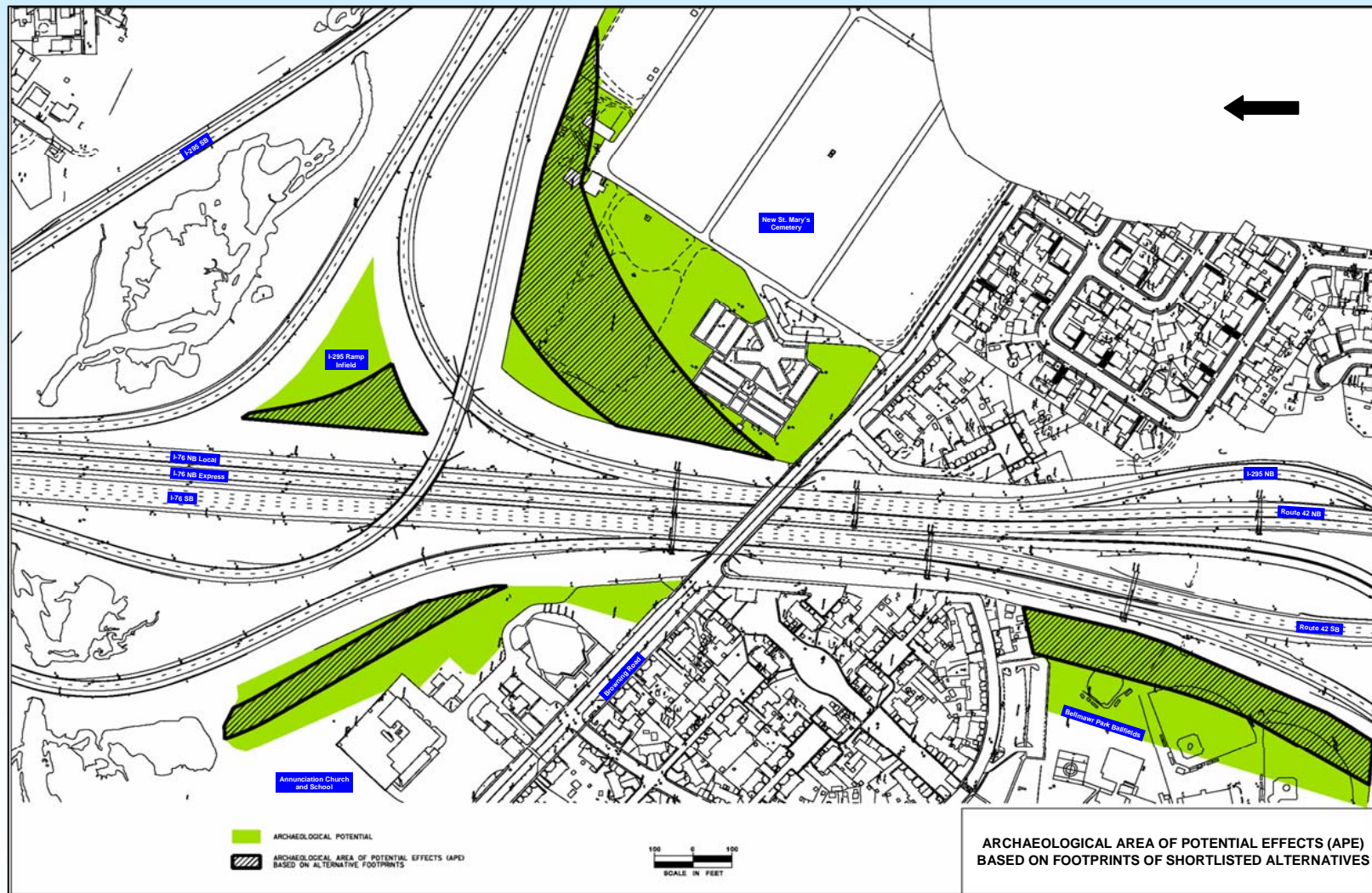


I-295/I-76/Route 42 Direct Connection

Camden County

www.state.nj.us/transportation/works/studies/rt295

ARCHAEOLOGICAL

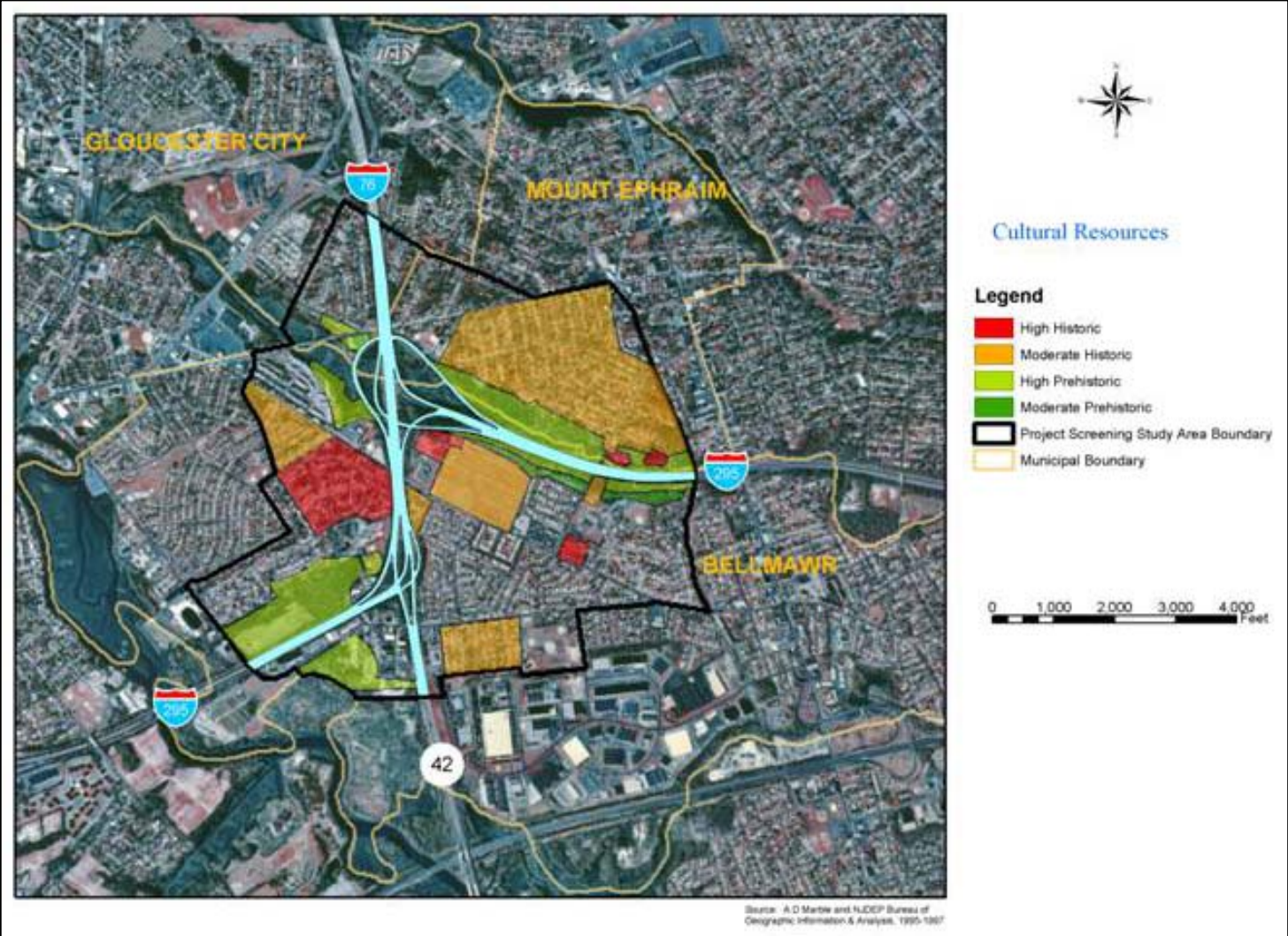


I-295/I-76/Route 42 Direct Connection

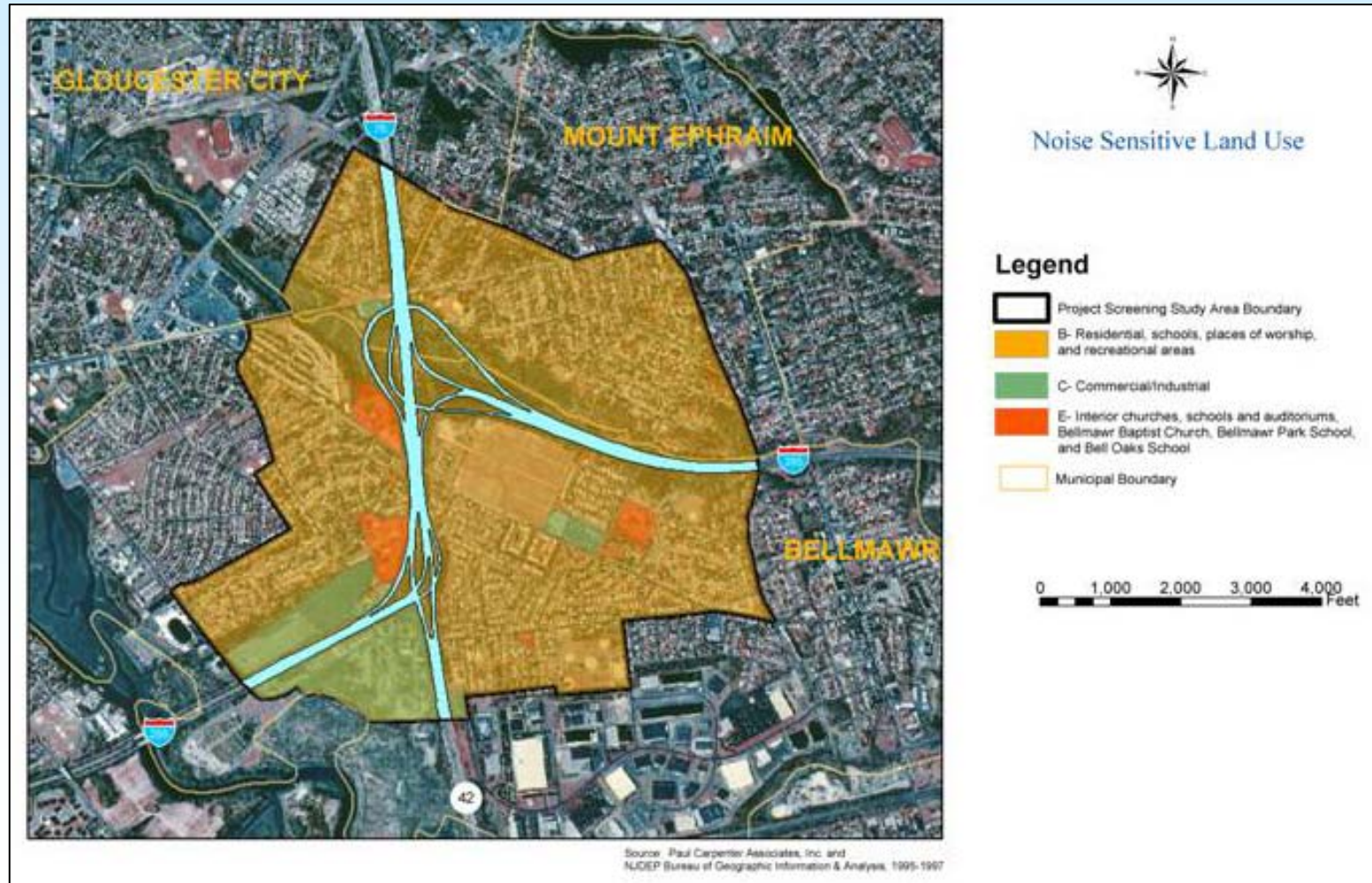
Camden County

CULTURAL RESOURCES

www.state.nj.us/transportation/works/studies/rt295



NOISE SENSITIVE LAND USE



I-295/I-76/Route 42 Direct Connection

Camden County

www.state.nj.us/transportation/works/studies/rt295

BALLOON TEST



Shining Star Park looking southwest



Browning Road looking west



Bellmawr baseball field



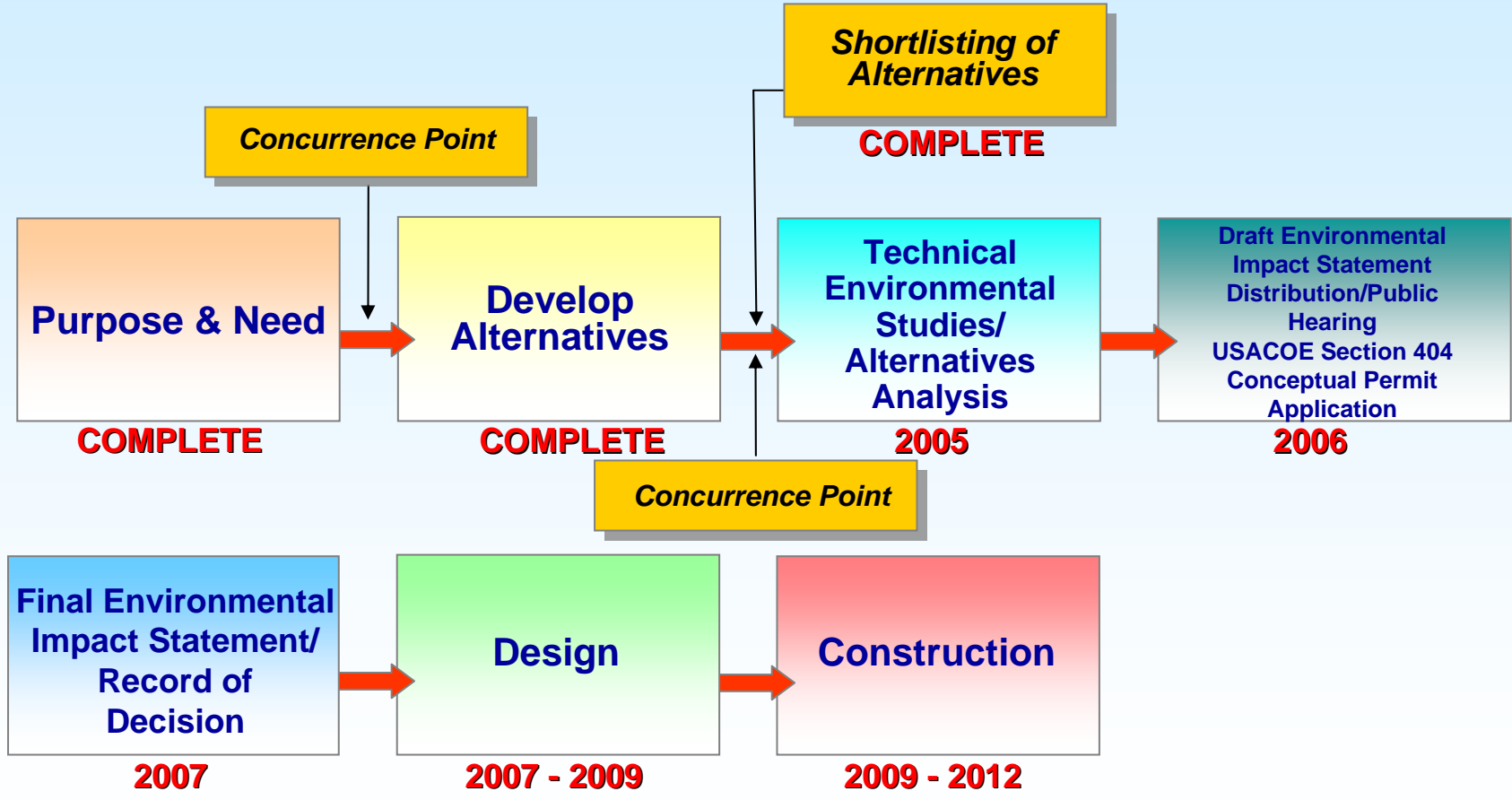
- Alternatives D and D1
- Alternatives G2 and H1
- Ramp A - Alternatives G2 and H1





www.state.nj.us/transportation/works/studies/rt295

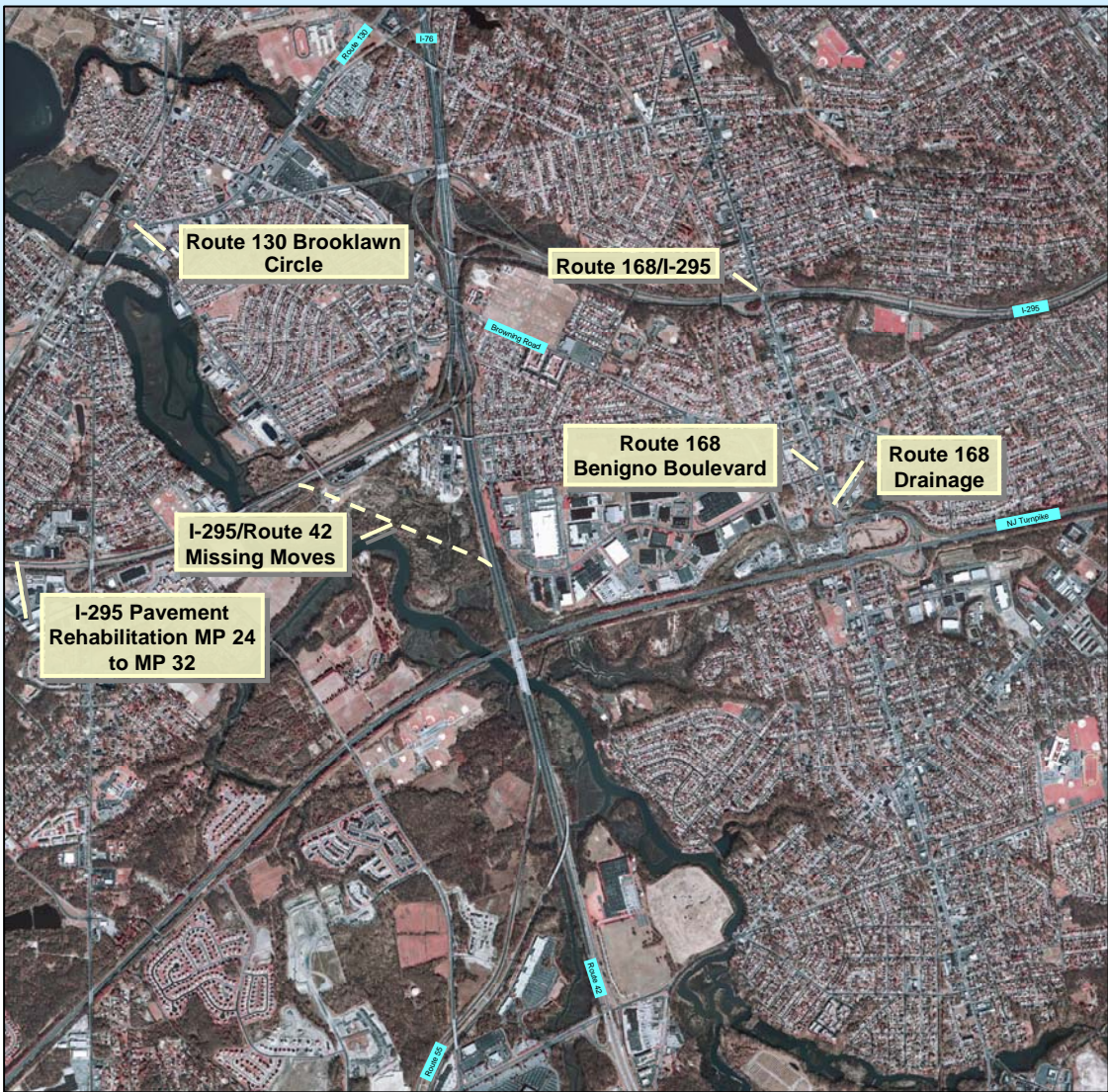
PROJECT SCHEDULE



**I-295/I-76/Route 42
Direct Connection**
Camden County

OTHER PROJECTS IN THE AREA

www.state.nj.us/transportation/works/studies/rt295





**I-295/I-76/Route 42
Direct Connection**

Camden County

www.state.nj.us/transportation/works/studies/rt295

NEXT STEPS

- **ACTT Workshop**
- **Public Information Center, 11/30/04**
- **Finalize Alternatives**
- **Complete Technical Environmental Studies**
- **Next Round of Outreach Events**





www.state.nj.us/transportation/works/studies/rt295

*If you would like more information,
please visit our web site at:*



www.state.nj.us/transportation/works/studies/rt295

