



## Building Better Communities by Design

### Congratulations on being selected for a Transportation Alternatives Program (TAP) Grant!

Now it is time to select a consultant from the NJDOT pre-approved pool of design consultants to assist you with engineering design and project management services on your Transportation Alternatives Project. **Greenman-Pedersen, Inc. (GPI)** has the optimal blend of comprehensive experience and engineering excellence to navigate your project through to authorization of the construction funding.

GPI is well acquainted with the federal process and has worked with the personnel of NJDOT is Division of Local Aid and Economic Development on numerous occasions to advance Transportation Alternatives projects.

#### Our Approach

1. Understand your needs and goals for the project;
2. Work with you to review the requirements and procedures for advancing your project through the federal aid process;
3. Identify potential constraints or impacts early and developing solutions to keep your project on track;
4. Design and deliver your project on time, within budget, and at a high level of quality, ensuring that you meet state and federal requirements.

#### GPI's Experience Includes:

- Bicycle and Pedestrian Design
- Trail Design
- Historic Districts
- Historic Structures
- Complete Streets Design
- NJDOT Project Delivery Process
- Compliance with federal laws and regulations including 23CFR and 2CFR 200
- Environmental Permitting
- Stakeholder and Community Involvement
- Utility Coordination
- ADA Accommodation
- Signalized and Unsignalized Intersection Design
- Structural design and rehabilitation
- Railroad Coordination
- Stormwater management
- Green Stormwater Infrastructure

**Similar Project Experience**

**Streetscape and Traffic Calming Improvements**

Client: Maplewood Township, Location: Maplewood, NJ

GPI prepared contract documents for streetscape improvements and traffic calming measures to better facilitate pedestrian and vehicular movement. Streetscape work included decorative traffic signal and lighting standards and arms, brick pavers, and other context sensitive solutions.



**JFK Boulevard Traffic Safety / Signal Optimization / Streetscape Improvements**

Client: NJTPA/Hudson County, Location: Jersey City, NJ

GPI developed and designed improvements that made JFK Boulevard safer and friendlier to pedestrians, including the installation of pedestrian bump outs and Lead Pedestrian Intervals (LPIs). Improvements also included signal upgrades, signal backplates, crosswalks, countdown pedestrian signals, and ADA compliant sidewalk, ramps and pushbuttons.

**Morristown Engineering and Design of Mobility Improvements**

Client: ARUP, Location: Morristown, NJ

GPI provided planning and engineering services to establish a multimodal transportation plan to improve traffic flow and safety of all users for seven corridors in Morristown. GPI also assisted the town in identifying funding opportunities, such as the Highway Safety Improvement Program (HSIP), Community Development Block Grants (CDBGs) and NJDOT Local Aid grants.



**Somerset County Bikeway**

Client: Somerset County Park Commission, Location: Duke Island Park, NJ

GPI subsidiary Keller & Kirkpatrick designed 2.4 mile-long bike path through Duke Island Park, located on the Raritan River in Raritan Borough and the Township of Bridgewater. The project included multiple State Open Water crossings with bridges and significant permitting.

**West Milford Bikeway Improvements**

Client: Township of West Milford, Location: West Milford Township, NJ

GPI subsidiary Keller & Kirkpatrick designed a bike path extension and roadway improvements to Nosenzo Pond Road. The project was partially funded with a grant from the New Jersey Department of Transportation Local Aid. The total length of the 4 foot-wide bike path on both sides of the road was 1.25 miles.



**Bethpage State Park Bikeway Extension**

Client: New York State Dept. of Transportation, Location: Nassau County, NY

GPI designed this shared use path that is approximately 15 miles in length. The path accommodates both bicyclists and pedestrians. GPI developed the project from concept through to PS&E documents, conducted field surveys to augment existing data and assisted the client in coordination with related agencies, municipalities, and special interest groups.



## NJDOT Local Aid: Multiple Transportation Enhancement (TE) ARRA Funded Projects

Client: NJDOT, Location: Various Municipalities & Counties, NJ

GPI provided professional engineering design services to NJDOT LA District 1 and acted as the Project Manager under direction of the LA District Manager. The purpose was to obtain federal authorization for construction and ensure that all federal ARRA requirements were met for the following distinct projects.

- **Morris Canal Lock 2 East Restoration (Historic Preservation):** Upgraded Morris Canal Lock 2 East to an operational level and create an outdoor museum.

- **City of Clifton - Lakeview Avenue Streetscape:** Streetscape improvements along the business section of Lakeview Avenue consisting of new decorative streetlights, concrete and brick paver sidewalks, textured crosswalks, benches, trash receptacles, shade trees and enhanced signing.

- **William Carlos Williams Community Plaza Beautification (Urban Design):** Beautification and reuse plan at a derelict site located along one of Paterson's main gateways and the Paterson Great Falls Historic District.

- **Totowa Borough - Union Boulevard Streetscape:** Union Boulevard Streetscape Project that included curb and sidewalk improvements, brick paving and decorative lighting.

- **Hopatcong Borough - Hopatchung Road Redevelopment:** Pedestrian circulation network improvements for the Hopatchung Road Redevelopment and Beautification Project including sidewalks, crosswalks, lighting and street furniture.

- **Franklin Township - Asbury Historic District Sidewalk Improvements:** Replaced sidewalks along Old Main Street within the Asbury Historic District.

- **Hackettstown - Main Street Sidewalk and Streetscape:** Improvements that included new sidewalks, tree plantings, decorative lighting, bicycle racks, benches, and trash receptacles.



### GPI's Description of Services Includes:

Based on your needs, we can assist or perform some or all of the activities necessary to develop a bid/authorization package that complies with all applicable state and federal laws, rules and regulations as well as federal, NJDOT and recognized industry design standards (AASHTO, MUTCD, ADA, NJDOT and/or local Complete Streets Policies, etc.).

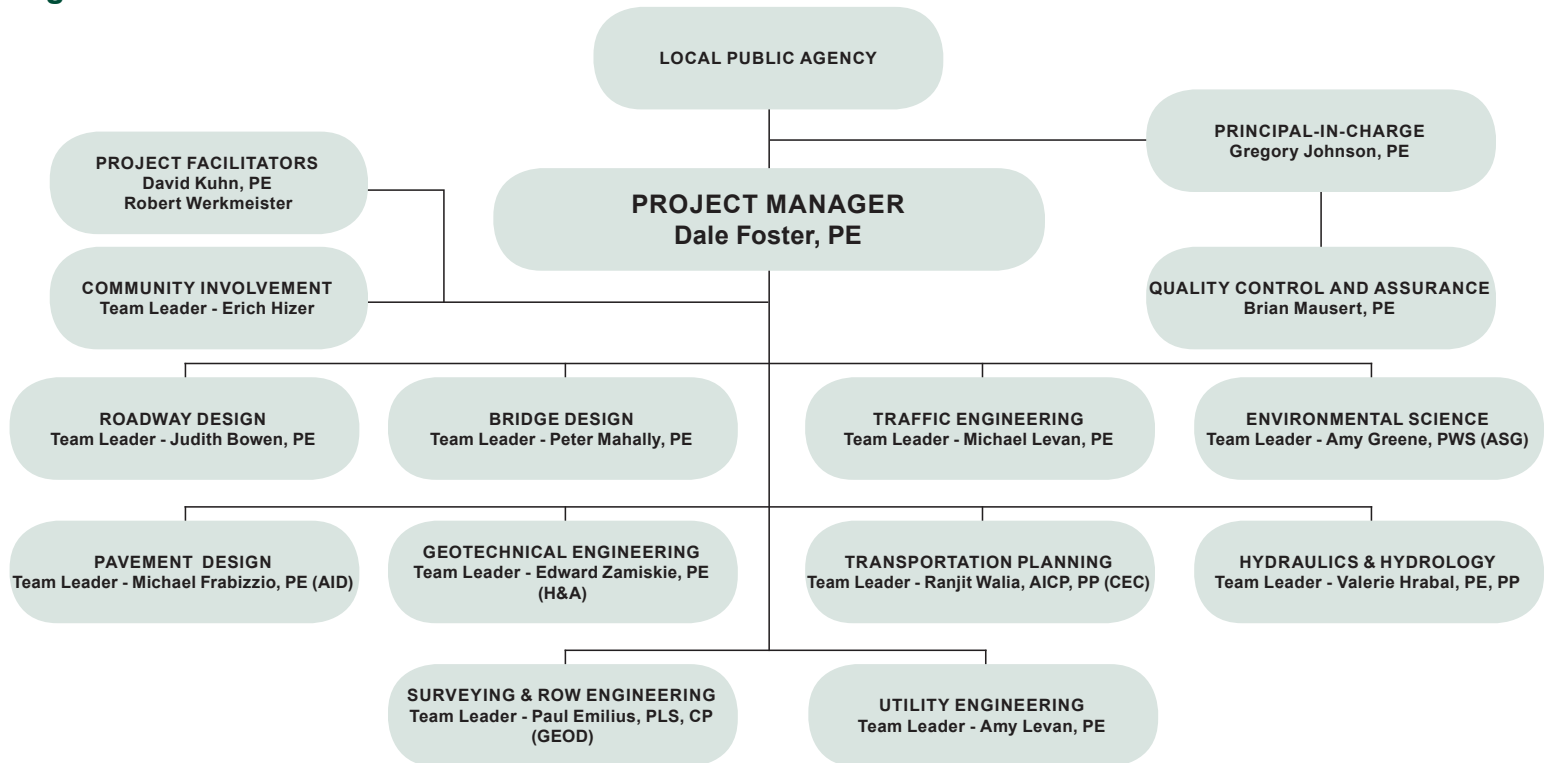
#### Some of the applicable services that we can perform for you include:

- Survey and Base Mapping (including LiDAR)
- Traffic Data Collection and Analysis
- Engineering and Design
- Utility Coordination
- Environmental Documentation/Permitting
- Right-of-Way Documentation
- Design Exception Reports
- Public Outreach / Community Involvement
- PS&E, Construction Schedule and Bid Authorization Packages
- Construction Support

#### We can also assist you in preparing and/or obtaining:

- Right-of-Way, Utility, Design and Railroad Certifications
- Public Interest Finding (PIF) Statement/Justification for Patented Proprietary Items
- Classification Codes Worksheet for Civil Rights Goal Determination
- Trainee/Apprentice Classifications - DBE/ ESBE Training Goals
- Approved Environmental Document (CED and ER) with SHPO Concurrence
- Construction Environmental Checklist

## Organizational Chart



### Subconsultants

- (AID) Advanced Infrastructure Design, Inc. (DBE)
- (ASG) Amy S. Greene Environmental Consultants, Inc. (DBE)
- (CEC) Civic Eye Collaborative (DBE)
- (GEOD) GEOD Corporation (ESBE)
- (H&A) Haley & Aldrich, Inc.

## GPI's Project Manager

Our Project Manager, Dale Foster, P.E., has over 40 years' experience delivering a wide array of local transportation projects utilizing NJDOT federal and state grant funding. Mr. Foster served as County Engineer for Cape May County for 25 years. His work has included preliminary engineering and final design of roadway, bridges, streetscapes, and bikeways. Mr. Foster has significant experience in implementing ADA upgrades and managing projects that included complex right-of-way acquisition, utility coordination, and environmental permitting.

As an extra level of quality and support, GPI's Dave Kuhn, P.E. will facilitate delivery of your project. Mr. Kuhn has 30 years of experience with NJDOT. During his tenure with NJDOT, Mr. Kuhn served as Director of the Division of Local Aid as well as Assistant Commissioner for Planning and Grant Administration. His knowledge of the federal-aid delivery process is invaluable. He is well versed in the review and coordination of planning, design, and construction and associated federal documents to confirm complete compliance with all applicable regulations.

## Contact

**Dave Kuhn P.E.**

[dkuhn@gpinet.com](mailto:dkuhn@gpinet.com)

**908.236.9001**

**Local Offices: Lebanon, Morris Plains, Red Bank, Ocean View, NJ  
Philadelphia, PA**