

## Congratulations on being selected for a Transportation Alternatives Set-Aside Grant

Now it is time to select a consultant from the NJDOT pre-approved pool of design consultants to assist you with engineering design and project management services on your Transportation Alternatives Project.

**Greenman-Pedersen, Inc. (GPI)** has the optimal blend of project experience and engineering expertise to navigate your project from design authorization through construction. GPI has been selected to provide design assistance on over 20 Transportation Alternatives and Safe Routes to School projects.

GPI is well acquainted with state and federal requirements and works with the personnel of NJDOT's Division of Local Aid and Economic Development often to advance Transportation Alternatives projects.

### Our Approach

1. Understand **your** needs and goals;
2. Work with you to review the requirements and procedures for advancing your project through the federal aid process;
3. Identify potential constraints or impacts early and solutions to keep your project on track;
4. Design and deliver your project on time, within budget, and at a high level of quality, ensuring that you meet state and federal requirements.

### GPI's Experience Includes:

- Streetscape Design
- Trail Design
- Bicycle and Pedestrian Safety Improvements
- Historic Districts and Structures
- Complete Streets Design
- NJDOT Local Project Delivery Experience
- NJDOT Project Delivery Process
- Waterfront Trails / Walkways
- Compliance with All Applicable State and Federal Laws, Rules and Regulations as well as Federal, NJDOT and Recognized Industry Design Standards
- Environmental Permitting
- NJDOT Stakeholder and Community Involvement Requirements (Virtual and In-person)
- Utility Coordination
- ADA Accommodation
- Signalized and Unsignalized Intersection Design
- Structural Design and Rehabilitation
- Railroad Coordination
- Stormwater Management
- Green Infrastructure



# NJDOT Transportation Alternatives Design Assistance Project Experience

From streetscape improvements to trails, GPI understands how to deliver these projects in conformance with the NJDOT required delivery process and ensure that all federal requirements are met. Our experience also includes projects in urban and rural areas across the state.



## City of Paterson - Spruce Street Gateway Streetscape Project - Phase 1

*Client: Passaic County* - GPI is performing Preliminary Engineering and Final Design for this project in the Great Falls Historic District. Work includes pedestrian improvements and streetscape amenities along Spruce Street as well as the replacement of traffic signals at the McBride Avenue intersection and Market Street intersection. Improvements will also be made to the historic Middle Raceway Structure.



## Town of Boonton - Historic Main Street Revitalization Streetscape

*Client: Town of Boonton* - GPI is performing Preliminary Engineering and Final Design of Streetscape and Pedestrian Safety Improvements along Main Street between Liberty Street and Division Street. Work includes crosswalk restriping, sidewalk and curb replacement, rapid flashing beacons, ADA compliant curb ramps and signal upgrades, pedestrian bump-outs, street furniture, decorative lighting, and bicycle safe grates.



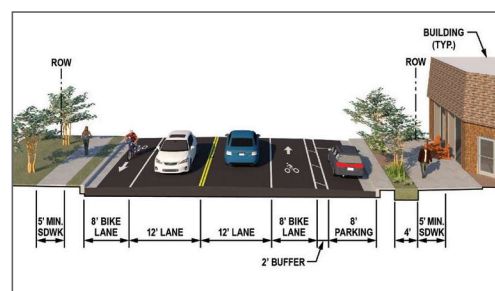
## Hopewell Township - Lawrence-Hopewell Trail

*Client: Hopewell Township* - GPI has completed Preliminary Engineering for the construction of a new one-mile long Mount Rose Segment of the Lawrence-Hopewell Trail. Project traverses freshwater wetlands and requires significant permitting. Project also provides for installation of flashing beacon signs at a road crossing.



## Cherry Hill Township - Camden County Parks Trail

*Client: Camden County* - GPI has completed Preliminary Engineering for the Grove Street Trail Connector Project. The project will reconstruct and widen an existing trail that runs through the county park adjacent to the Cooper River and provide for a safer crossing of Grove Street through the use of median island extensions and installation of Rectangular Rapid Flashing Beacons.



## City of Brigantine Beach - Lighthouse District Streetscape Improvements

*Client: City of Brigantine Beach* - GPI has completed Preliminary Engineering and has begun Final Design for streetscape improvements which include decorative lighting, landscaping, permeable pavers, trash receptacles, benches, bike racks, bike lanes, ADA compliant curb ramps, and decorative crosswalk striping.

## GPI has been selected to provide Design Assistance for these additional Transportation Alternatives projects:

- Carteret Borough - Pedestrian and Cyclist Waterfront Access Improvement
- Cumberland County / Downe Township - Newport Streetscape Improvement
- Folsom Borough - 13th Street Pedestrian Path
- Marlboro Township - Route 79 Sidewalk and Pedestrian Safety Improvements
- Monmouth County - Henry Hudson Trail Extension and Pedestrian Safety Improvements
- Red Bank Borough - Shrewsbury Avenue Streetscape
- Roxbury Township - Main Street Streetscape

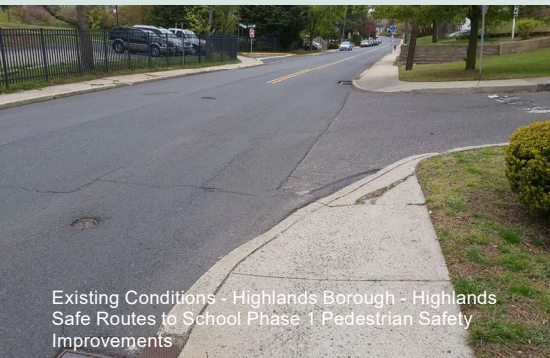


Existing Conditions - Red Bank Borough - Shrewsbury Avenue Streetscape





Existing Conditions - High Bridge Borough - Downtown Connection Sidewalk Improvements



Existing Conditions - Highlands Borough - Highlands Safe Routes to School Phase 1 Pedestrian Safety Improvements

## NJDOT Safe Routes to School Design Assistance Project Experience

GPI also has similar Design Assistance experience associated with NJDOT Safe Routes to School (SRTS) Program. GPI has been selected to provide Design Assistance for the following SRTS projects:

- **Chatham Township** - Shunpike Road Sidewalk Installation and Reconstruction (2 projects)
- **City of Long Branch** - Prospect and John Streets Pedestrian Safety Improvements
- **Gloucester City** - Middle School Sidewalk Improvements
- **High Bridge Borough** - Downtown Connection Pedestrian Improvements
- **Highlands Borough** - Highlands Safe Routes to School Phase 1 Pedestrian Safety Improvements
- **Middletown Township** - Hubbard Avenue Pedestrian Improvements
- **Netcong Borough** - Sidewalk and Pedestrian Safety Improvements
- **Town of Hammonton** - Sooy Elementary School Sidewalk and Pedestrian Safety Improvements

## Similar Project Experience



Partially Completed

### Jersey City - JFK Boulevard Traffic Safety / Signal Optimization / Streetscape Improvements

*Client: NJTPA / Hudson County* - GPI developed and designed improvements, in accordance with NJDOT requirements, that made JFK Boulevard safer and friendlier to pedestrians, including the installation of pedestrian bump outs and Lead Pedestrian Intervals (LPIs). Improvements also included signal upgrades, signal backplates, crosswalks, countdown pedestrian signals, and ADA compliant sidewalk, ramps, and pushbuttons.



### Maplewood Township - Streetscape and Traffic Calming Improvements

*Client: Maplewood Township* - GPI prepared contract documents for streetscape improvements and traffic calming measures to better facilitate pedestrian and vehicular movement. Streetscape work included decorative traffic signal and lighting standards and arms, brick pavers, and other context sensitive solutions.



### Duke Island Park - Somerset County Bikeway

*Client: Somerset County Park Commission* - GPI designed a 2.4 mile-long bike path through Duke Island Park, located on the Raritan River in Raritan Borough and the Township of Bridgewater. The project included multiple State Open Water crossings with bridges and significant permitting.



### Town of Morristown - Engineering and Design of Mobility Improvements

*Client: ARUP* - GPI provided planning and engineering services to establish a multimodal transportation plan to improve traffic flow and safety of all users for seven corridors in Morristown. GPI also assisted the town in identifying funding opportunities, such as the Highway Safety Improvement Program (HSIP), Community Development Block Grants (CDBGs) and NJDOT Local Aid grants.



### Virtual Public Involvement

TA Set-Aside projects require that every effort is made to engage the public as projects are developed. GPI has developed innovative solutions to maximize and enhance outreach in accordance with NJDOT requirements. This VPI technology replicates the set-up of traditional public meetings, offering digital project information, as well as access to surveys in a single platform. The users are situated in a familiar setting and can view and navigate the room at any time in a near-reality experience.

## GPI's Project Manager



### Dale Foster, PE

Mr. Foster has over 40 years experience delivering a wide array of local transportation projects utilizing NJDOT federal and state grant funding and is currently managing Transportation Alternatives projects for numerous clients. Mr. Foster served as County Engineer for Cape May County for 25 years. His work has included preliminary engineering and final design of roadway, bridges, streetscapes, and bikeways. Mr. Foster has significant experience in implementing ADA upgrades and managing projects that included complex right-of-way acquisition, utility coordination, and environmental permitting.



As an extra level of quality and support, GPI's **Dave Kuhn, PE** will facilitate delivery of your project.

Mr. Kuhn has 30 years of experience with NJDOT where he served as Director of the Division of Local Aid and Assistant Commissioner for Planning and Grant Administration. His knowledge of the federal-aid delivery process is invaluable. He is well versed in the review and coordination of planning, design, and construction and is readily available to assist grant recipients in navigating the NJDOT contracting and delivery process.

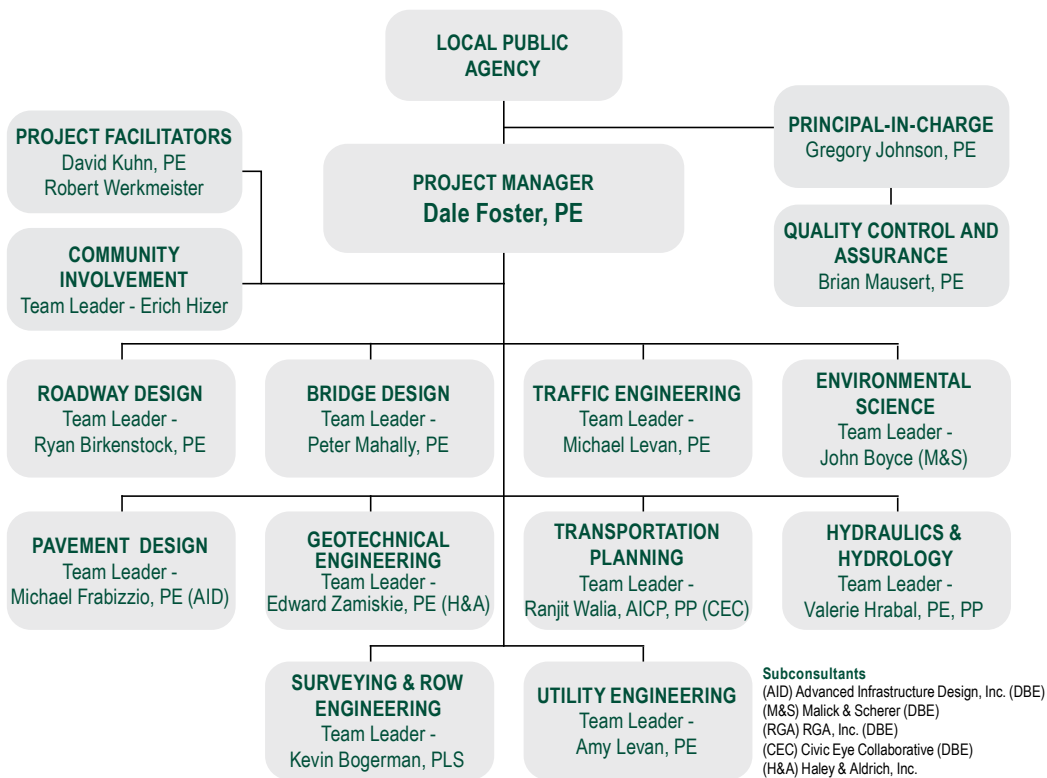
## NJDOT Local Aid: Multiple Transportation Enhancement (TE) ARRA Funded Projects

Client: NJDOT, Location: Various Municipalities and Counties, NJ - GPI provided professional engineering design services to NJDOT Local Aid and acted as the Project Manager under direction of the Local Aid District Manager.

- **City of Clifton - Lakeview Avenue Streetscape:** Streetscape improvements along the business section of Lakeview Avenue consisting of new decorative streetlights, concrete and brick paver sidewalks, textured crosswalks, benches, trash receptacles, shade trees and enhanced signing.
- **City of Paterson - William Carlos Williams Community Plaza Beautification (Urban Design):** Beautification and reuse plan at a derelict site located along one of Paterson's main gateways and the Paterson Great Falls Historic District.
- **Totowa Borough - Union Boulevard Streetscape:** Union Boulevard Streetscape Project that included curb and sidewalk improvements, brick paving and decorative lighting.
- **Hopatcong Borough - Hopatcong Road Redevelopment:** Pedestrian circulation network improvements for the Hopatcong Road Redevelopment and Beautification Project including sidewalks, crosswalks, lighting and street furniture.
- **Hackettstown - Main Street Sidewalk and Streetscape:** Improvements that included new sidewalks, tree plantings, decorative lighting, bicycle racks, benches, and trash receptacles.



## Organizational Chart - The GPI Team



**For more information, please contact:**

**Dave Kuhn, PE**

908.236.9001 | [dkuhn@gpinet.com](mailto:dkuhn@gpinet.com)

Local Offices:

NJ - Lebanon, Morris Plains, Red Bank, Ocean View

PA - Philadelphia

[gpinet.com](http://gpinet.com)

