

Welded wire fabric shall pass through construction joints. Splices where necessary, shall overlap a minimum of 1'-0". Reinforcement shall not pass through expansion and contraction joints and a minimum of 2" concrete end cover shall be provided.

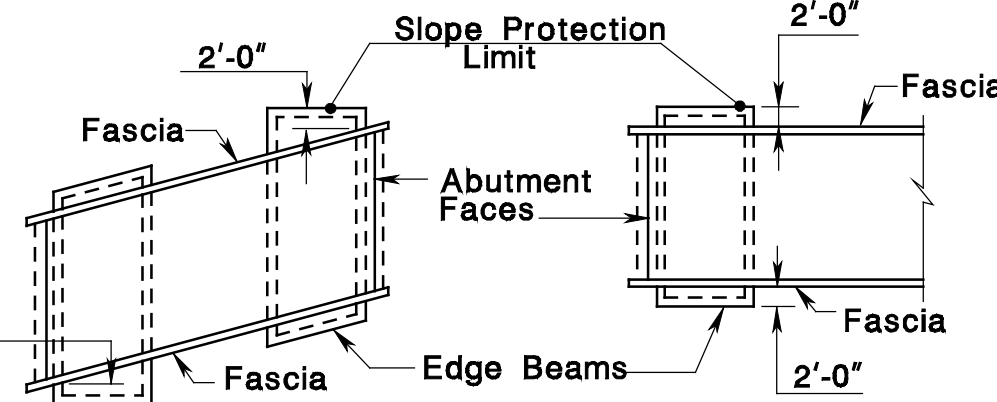
Edge Beams required at Slope Protection limits & on both sides of Contraction and Expansion Joints. Expansion Joints required at 90'-0" intervals. Contraction Joints required at 30'-0" intervals. The number of Construction Joints shall be kept to a minimum and shall be based upon the Contractor's pouring procedure.

### CONSTRUCTION JOINT SECTION

For Expansion Joints use 1/2" Preformed Bituminous Joint Filler. Contraction Joints Paraffin coated. Upper 1/2" to be filled with Silicon Rubber Joint Sealer.

For Construction Joints V Groove to be filled with Silicon Rubber Joint Sealer.

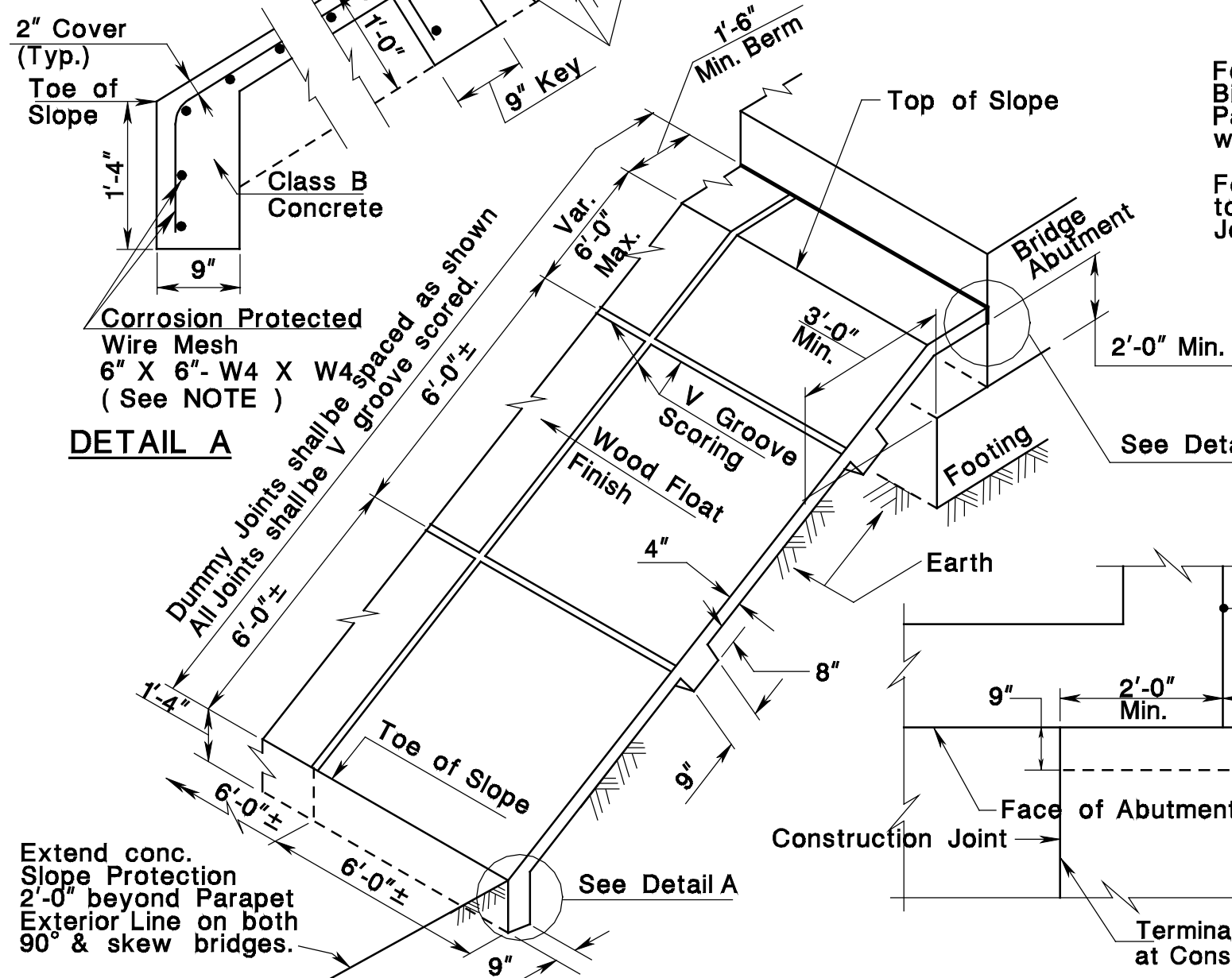
### EXPANSION AND CONTRACTION JOINT SECTION



### PLAN SKEW BRIDGE

### PLAN 90° BRIDGE

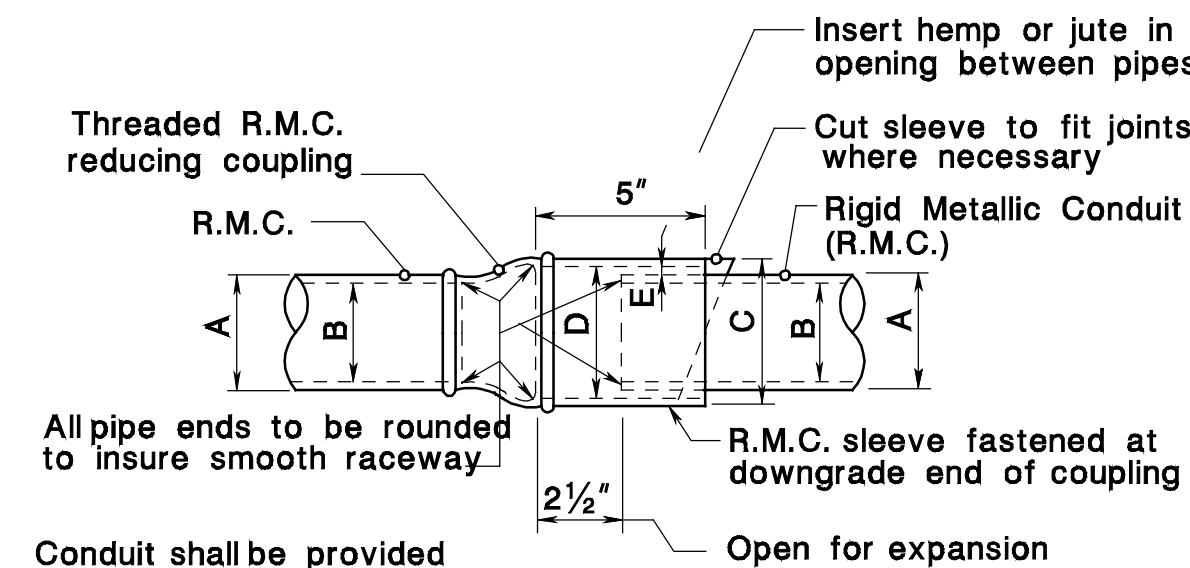
### SLOPE PROTECTION LIMITS



### ISOMETRIC SLOPE SKETCH

### PLAN AT ABUTMENT CORNER

## DETAILS OF CONCRETE SLOPE PROTECTION



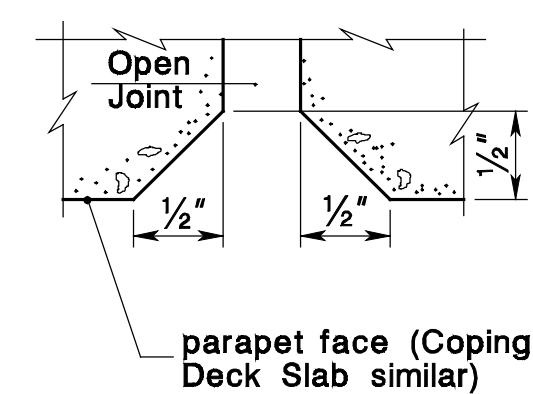
### ELEVATION

R. M. C.			SLEEVE			Nominal Reducing Coupling	Clearance E
Nom.Dia.	Ext.Dia. A	Int.Dia. B	Nom.Dia.	Ext.Dia. C	Int.Dia. D		
1 1/2"	1.900	1.610	2 1/2"	2.875	2.469	2 1/2" to 1 1/2"	3/32"
2"	2.375	2.067	3"	3.500	3.068	3" to 2"	11/32"
3"	3.500	3.068	4"	4.500	4.026	4" to 3"	1/4"
4"	4.500	4.026	5"	5.563	5.047	5" to 4"	1/4"

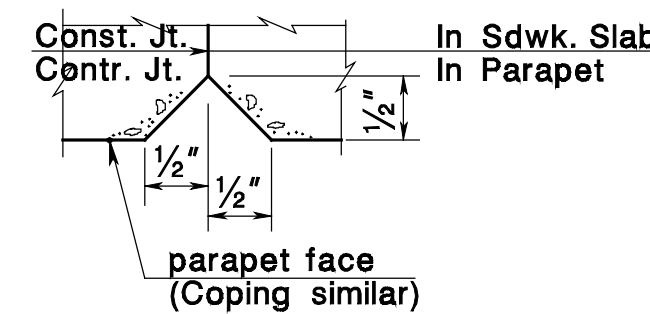
Expansion sleeves shall be installed at all Fixed and Expansion joints and elsewhere as shown or approved. R.M.C. and all fittings shall be hot-dip galvanized.

## DETAILS OF R.M.C. EXPANSION SLEEVE

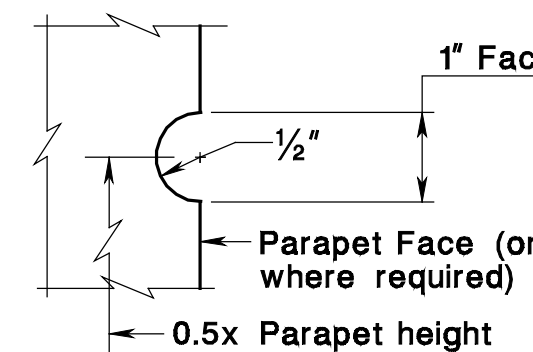
BCD-504-3.3



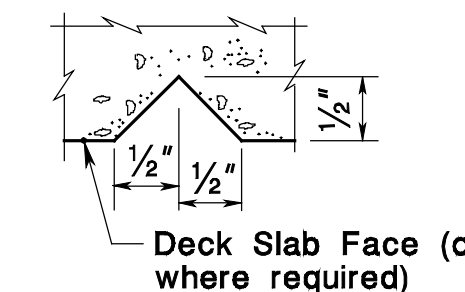
### OPEN JOINT



### CONTR. OR CONST. JOINT (Contraction joint paraffin coated)



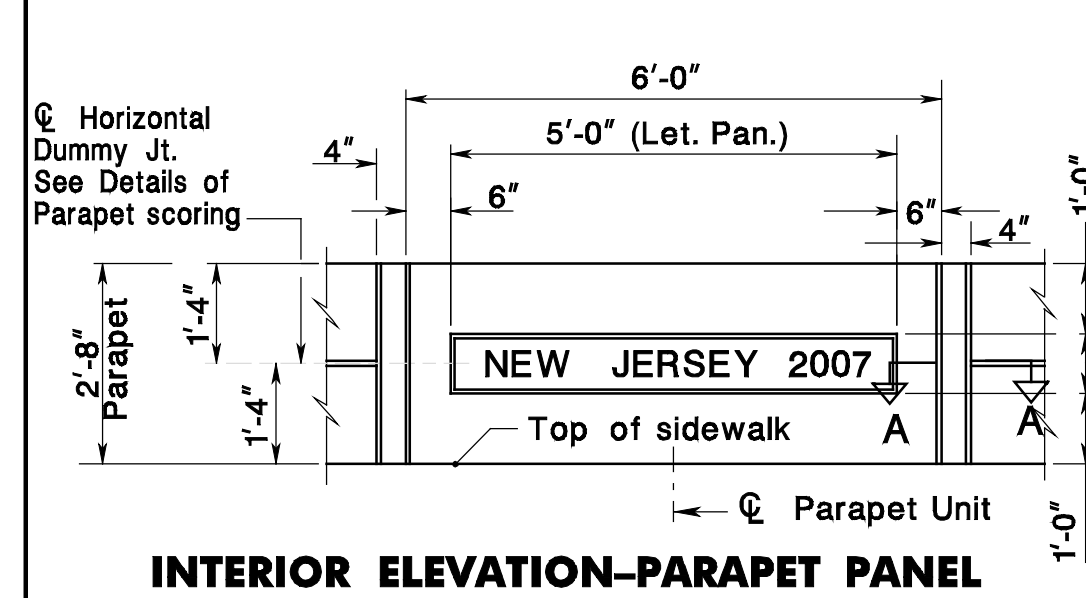
### HORIZONTAL DUMMY JOINT



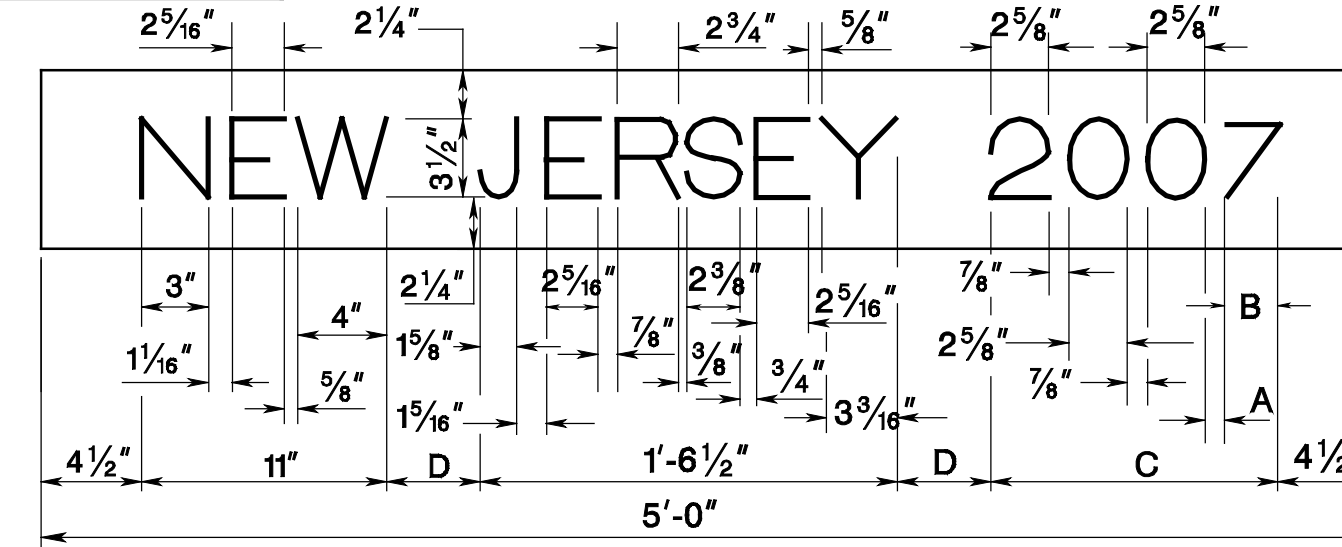
### VERTICAL DUMMY JOINT

## DETAILS OF PARAPET SCORING

BCD-504-3.4

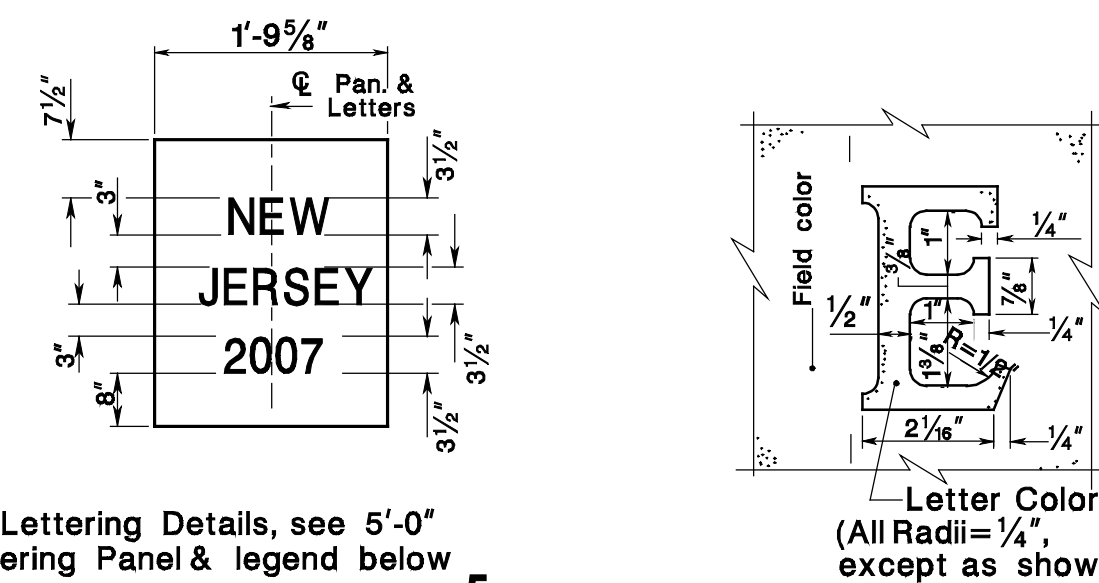


### INTERIOR ELEVATION-PARAPET PANEL



### DETAIL - C.S. LET. PANEL (5'-0")

All Dimensions shown are in inches



### ELEVATION

### SECTION

### DETAILS - LETTERING

LEGEND				
YEAR	A (IN.)	B (IN.)	C (IN.)	D (IN.)
2004	7/8	2 5/8	13 1/8	4 5/8
2005	7/8	2 5/8	12 7/8	4 5/8
2006	7/8	2 1/2	13	3 3/4
2007	7/8	2 1/2	13	4 5/8
2008	7/8	2 1/2	13	3 3/4
2009	7/8	2 5/8	13 1/8	3 3/4

Panel to be approved by the Engineer, before incorporating panel in the work.

PREFOR. ELASTOMERIC COMPRESSION SEALER	A	B	W1 (min.)	W2 (min.)
NOMINAL SIZE (IN.)	(IN.)	(IN.)	(IN.)	(IN.)
1 3/4" X 1 3/4"	(1)	1	(2)	1/16
2 1/2" X 2 1/2"	(1)	1 1/8	(2)	3/32
4" X 4"	(1)	2 5/8	(2)	3/16

### Notes:

- The nominal height of compression seals may vary based on manufacturers specifications. The height may exceed the nominal manufacturers sealer height by not more than 1/4".
- Dimension "B" varies depending on the joint manufacturer. The depth of embedment of the compression seal in the joint shall be set by the fabricator and is equal to the compressed seal height plus 1/2" (± 1/8").
- All preformed elastomeric compression seals shall conform to the material requirements of the NJDOT Standard Specifications for Road and Bridge Construction with current Supplemental Specifications, as modified by the Special Provisions.

\* The note should be modified to reflect applicable year and updated Specifications.

## DETAILS OF PREFORMED ELASTOMERIC JOINT SEALER

BCD-504-3.5

## TYPICAL DETAILS NO. 1

N.T.S.

BCD-504-3

NEW JERSEY DEPARTMENT OF TRANSPORTATION  
BUREAU OF STRUCTURAL ENGINEERING

## BRIDGE CONSTRUCTION DETAILS