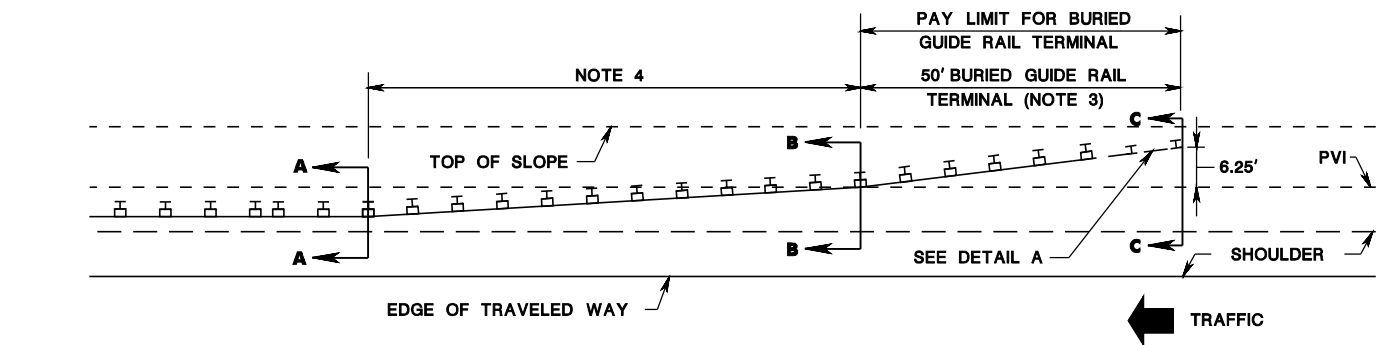
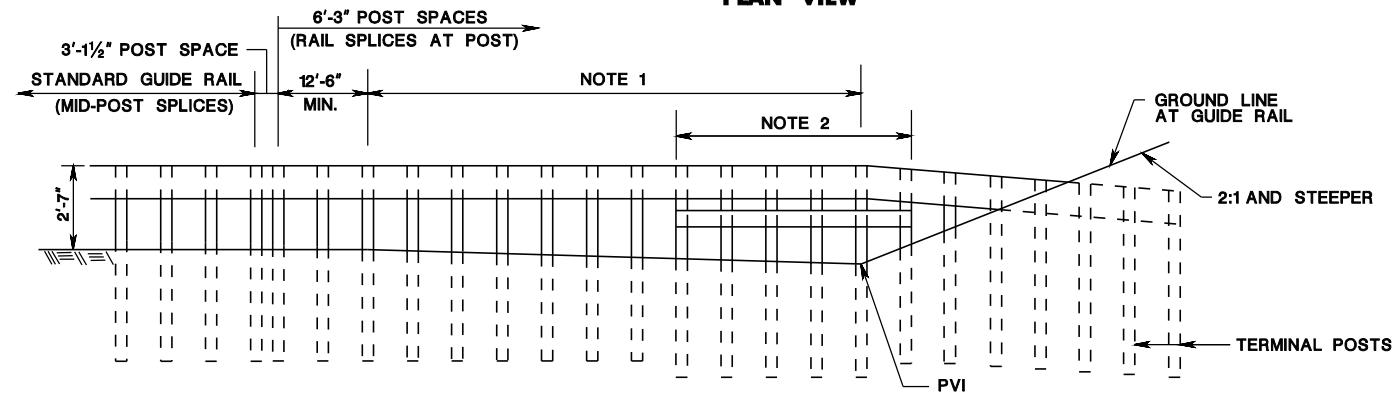


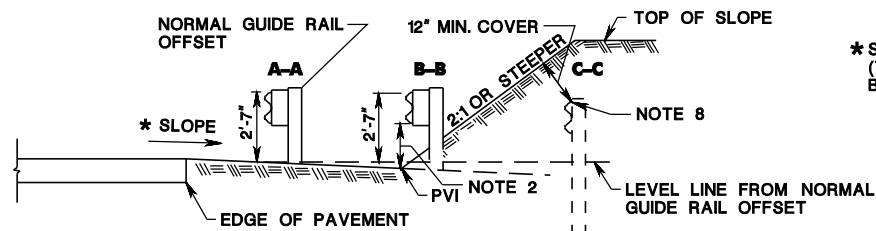
pen table= \\NDOTPRWS\Vsystem\NDOTWS\Projects\NDOTEng\pilot\TELA\Roadway\Detail\_11x17.tbl  
scale=64.06255:1.000000  
date=19-JUL-2017 14:35  
ID=TP2VILL  
BDC7D-02-REVISIONS TO CD-609-9  
BDC7D-02-ORIGINAL SHEET



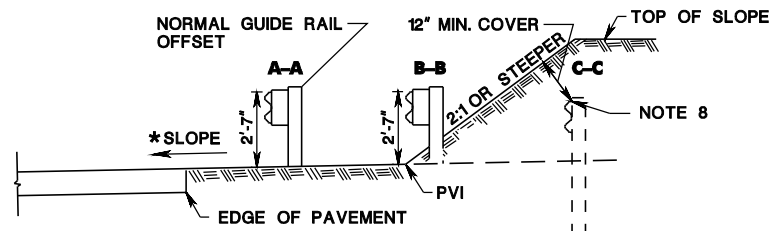
PLAN VIEW



FORESLOPE GRADED AWAY FROM ROADWAY - ELEVATION VIEW



FORESLOPE GRADED AWAY FROM ROADWAY - SECTION VIEW

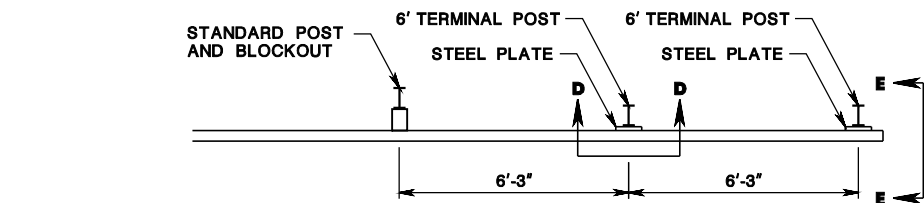


FORESLOPE GRADED TOWARD ROADWAY - SECTION VIEW

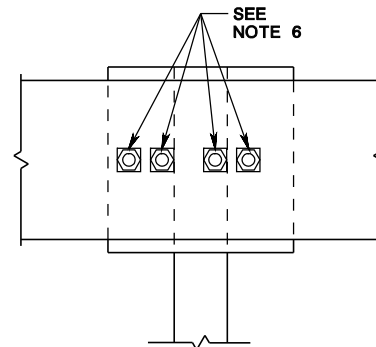
\*SLOPE AS SHOWN ON PLANS.  
(THE SLOPE ON APPROACH SHOULD  
BE 4:1 OR FLATTER)

NOTES:

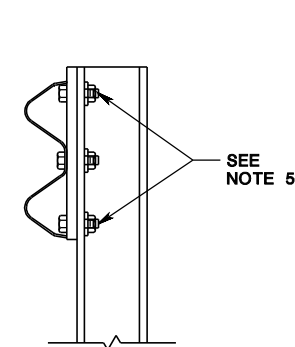
1. TOP OF GUIDE RAIL TO BE PARALLEL TO ROADWAY GRADE WHERE FORESLOPE IS GRADED AWAY FROM SHOULDER.
2. WHEN CLEARANCE FROM BOTTOM OF RAIL TO GROUND EXCEEDS 21", ADD RUBRAIL AND 8' LONG POSTS.
3. TAPER GUIDE RAIL HEIGHT TO PROVIDE 12" MINIMUM COVER AT LAST POST.
4. FLARE AS SHOWN ON CONSTRUCTION PLAN.
5. ATTACH STEEL PLATE TO POST WITH FOUR - 5/8" x 1 1/2" LONG HEX HEAD BOLTS W/HEX HEAD NUTS.
6. ATTACH RAIL TO STEEL PLATE WITH FOUR - 5/8" x 2" LONG HEX BOLTS W/SQUARE WASHER AND NUT.
7. DRILL 3 - 1" DIA. HOLES IN BEAM GUIDE RAIL.
8. THE TOP OF RAIL ELEVATION AT SECTION C-C SHOULD BE 2" TO 12" LOWER THAN THE TOP OF RAIL ELEVATION AT SECTION B-B.



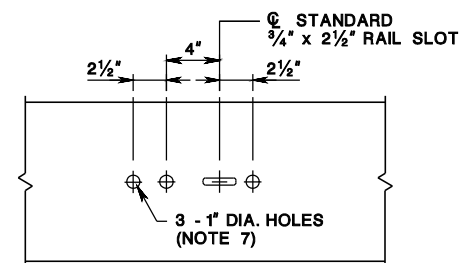
DETAIL A



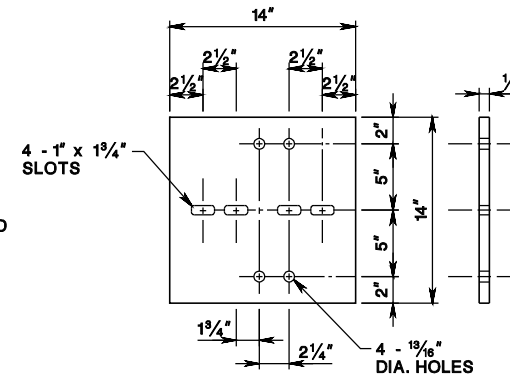
SECTION D-D



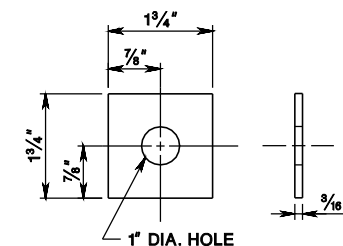
SECTION E-E



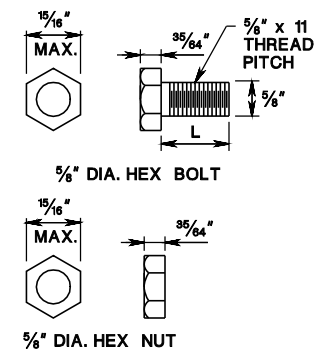
BEAM GUIDE RAIL  
TERMINAL HOLES



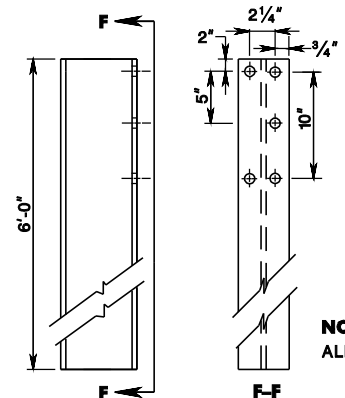
STEEL PLATE



SQUARE WASHER



NUT & BOLT



W6X8.5 OR W6X9 STEEL POST  
6' TERMINAL POST

NOTE:  
ALL HOLES 1 3/16" DIA.

BURIED GUIDE RAIL  
TERMINAL  
(MASH TL-3)

N.T.S.

CD-609-9

NEW JERSEY DEPARTMENT OF TRANSPORTATION

CONSTRUCTION DETAILS

CD-609-9.1