

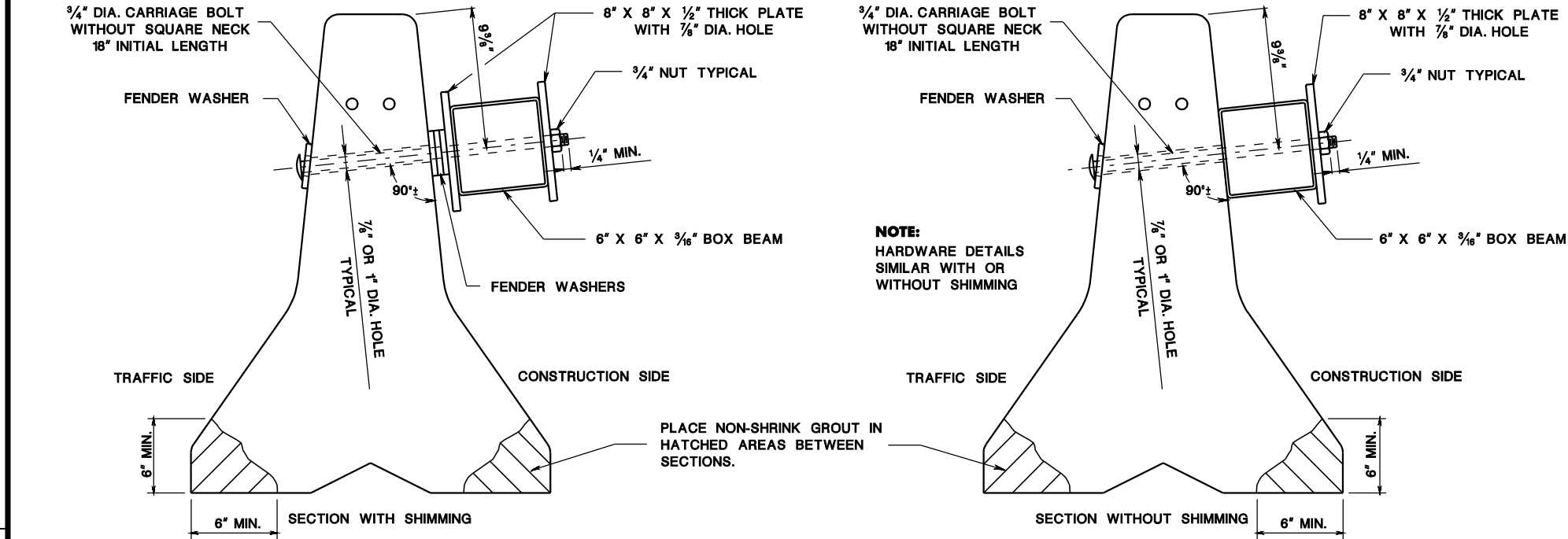
pen table=\\NDOT\RT\TWS\Projects\NDOT\TWS\Projects\NDOT\TWS\Projects\TBA\Roadway\Details\_13x17.tbl

scale=63.073306:1.000000

date=23-NOV-2021 11:25

ID=TP2TANG

BD0210-06-REVISED  
BD0210-06-ORIGINAL SHEET



BOX BEAM STIFFENING OF CONSTRUCTION BARRIER CURB WITH ATTACHMENT TYPE B

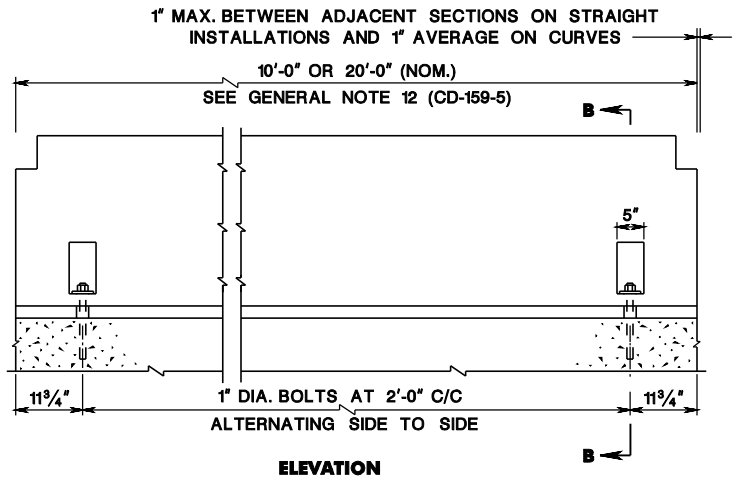
GENERAL NOTES:

- BOX BEAM IS TO BE IN ACCORDANCE WITH THE REQUIREMENTS OF THE STANDARD SPECIFICATIONS.
- CONSTRUCTION BARRIER CURB WITH BOX BEAM STIFFENER MAY ONLY BE USED WITH SEGMENTS 14'-0" OR LONGER.
- CONSTRUCTION BARRIER CURB MAY ONLY BE INSTALLED TO THE FOLLOWING MINIMUM RADII: 14'-0" SEGMENT - 161'-0" RADIUS; 16'-0" SEGMENT - 184'-0" RADIUS; 18'-0" SEGMENT - 207'-0" RADIUS; 20'-0" SEGMENT - 230'-0" RADIUS.
- WHERE CONSTRUCTION BARRIER CURB ARE PLACED ON A RADIUS, THE RESULTING GAPS BETWEEN THE BOX BEAM AND CONCRETE BARRIER TO BE SHIMMED.
- THE SHIMMING CONSISTS OF 8" X 8" X 1/2" SQUARE PLATE, AND FENDER WASHERS AS NEEDED TO SNUG THE BOX BEAM STIFFENER TO THE CONSTRUCTION BARRIER CURB.
- FENDER WASHER TO BE 3" NOMINAL O.D.
- THE PRESENCE OF NORMAL HOLES DRILLED PER THIS SHEET WILL NOT AFFECT THE REUSABILITY OF THE CONCRETE SEGMENTS.
- DRILL HOLES IN CONSTRUCTION BARRIER CURB FOR PURPOSE OF BOX BEAM ATTACHMENT USING A CORE DRILL OR ANY OTHER APPROVED ROTARY DRILLING DEVICE THAT DOES NOT IMPART AN IMPACT FORCE.
- DO NOT USE BOX BEAM STIFFENING AS MEDIAN BARRIER (TRAFFIC ON BOTH SIDES OF BARRIER).
- HOLES ARE NOT TO BE DRILLED AND ANCHOR PIN AND ANCHOR BOLT INSTALLATION IS NOT ALLOWED IN CONCRETE BRIDGE DECKS THAT WILL BE PERMANENTLY USED, UNLESS APPROVED BY THE DEPARTMENT BASED ON SPECIAL FIELD CONDITIONS. WHEN ANCHOR PIN AND BOLT INSTALLATION IS ALLOWED FOR PERMANENT OR NON-PERMANENT BRIDGE DECKS, ENSURE THAT CONCRETE IS SOUND AND IN GOOD CONDITION, AND CONCRETE THICKNESS IS SUFFICIENT.

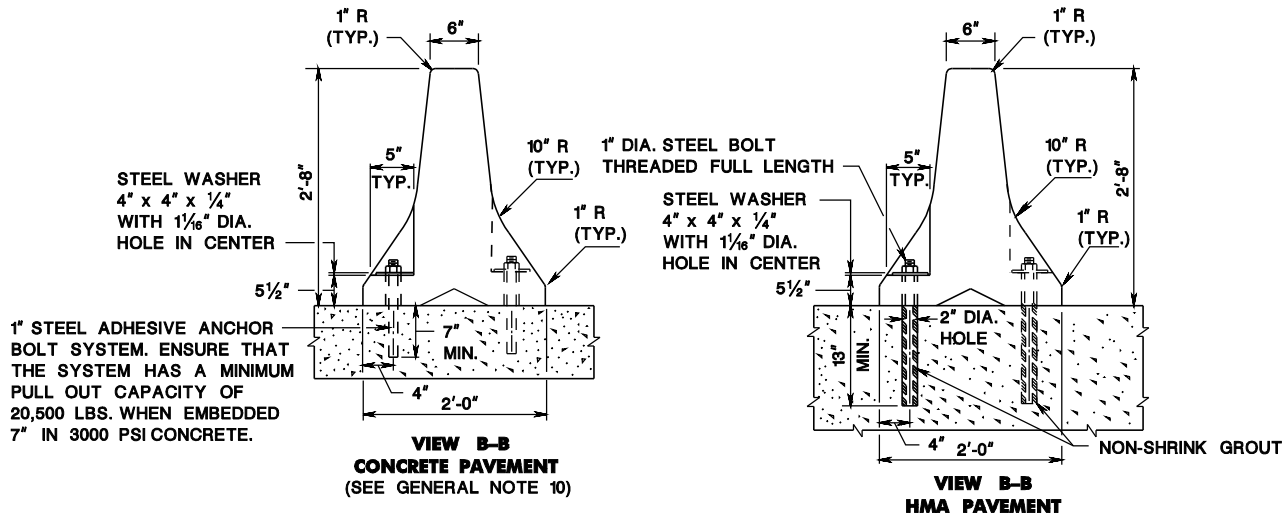
CD-159-3.3

NOTES:

- BOLTS ARE REQUIRED IN EVERY ANCHOR POCKET HOLE.
- WHEN BARRIER HAS BEEN REMOVED, THE BOLTS ARE TO BE REMOVED OR CUT OFF TO A LEVEL OF 1/2" MINIMUM BELOW THE SURFACE AND THE HOLE FILLED TO THE SATISFACTION OF THE RE.



ELEVATION

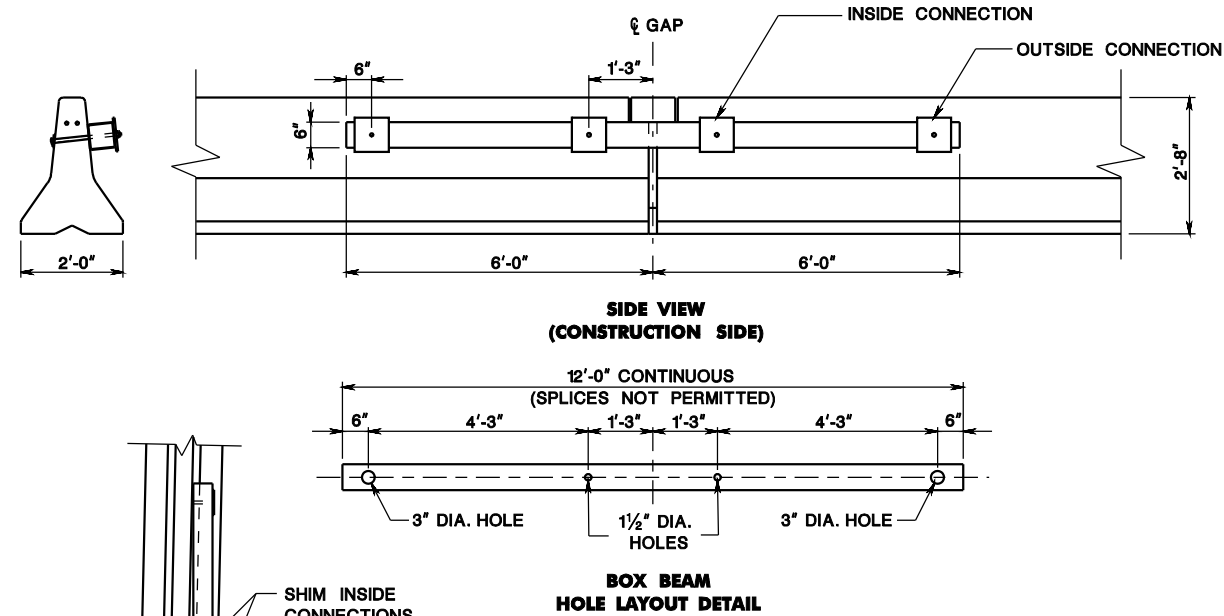


VIEW B-B  
CONCRETE PAVEMENT  
(SEE GENERAL NOTE 10)

VIEW B-B  
HMA PAVEMENT

ANCHORAGE FOR CONSTRUCTION BARRIER CURB WITH ATTACHMENT TYPE D

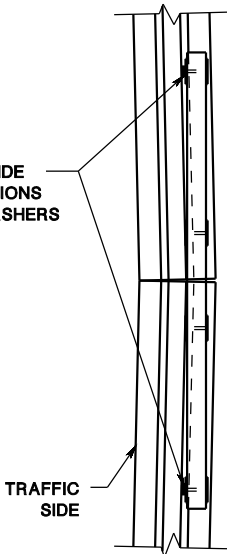
CD-159-3.2



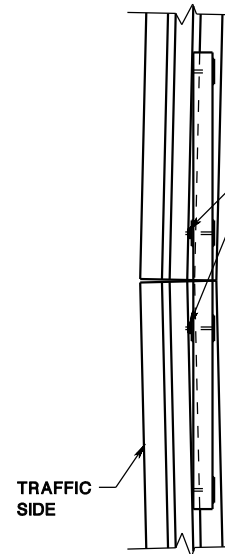
SIDE VIEW  
(CONSTRUCTION SIDE)

BOX BEAM  
HOLE LAYOUT DETAIL

SHIM INSIDE  
CONNECTIONS  
WITH WASHERS



PLAN VIEW  
CONSTRUCTION BARRIER CURB  
CURVING TOWARD TRAFFIC



PLAN VIEW  
CONSTRUCTION BARRIER  
CURVING AWAY FROM TRAFFIC

CONSTRUCTION BARRIER CURB  
(MASH TL-3)

N.T.S.

CD-159-3

NEW JERSEY DEPARTMENT OF TRANSPORTATION

CONSTRUCTION DETAILS

CD-159-3.1