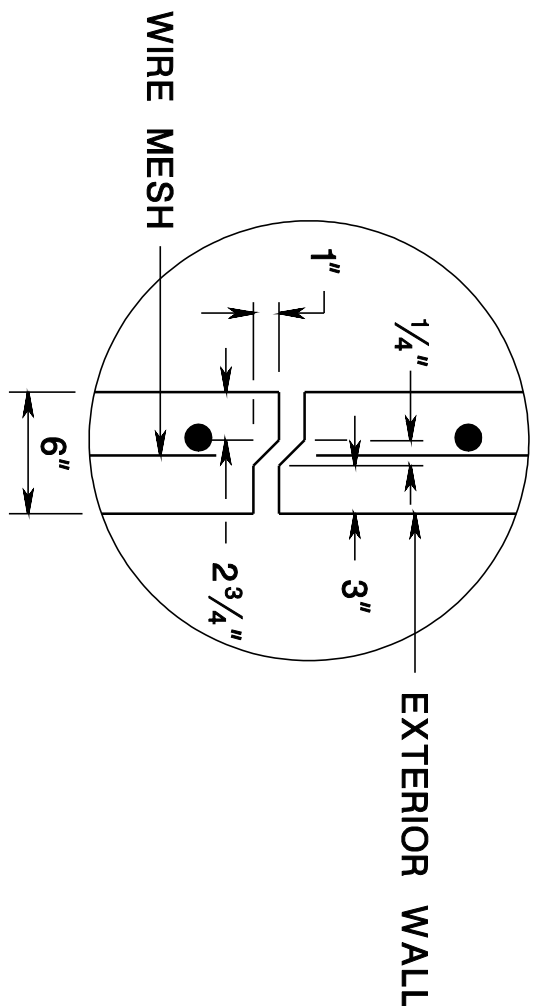


CONNECTION OF PIPE AND INLET FOR PRECAST INLET

CD-602-1.1



RISER JOINT DETAIL FOR PRECAST INLETS

NOTE:
JOINT TO BE GROUTED WITH MORTAR BY CONTRACTOR

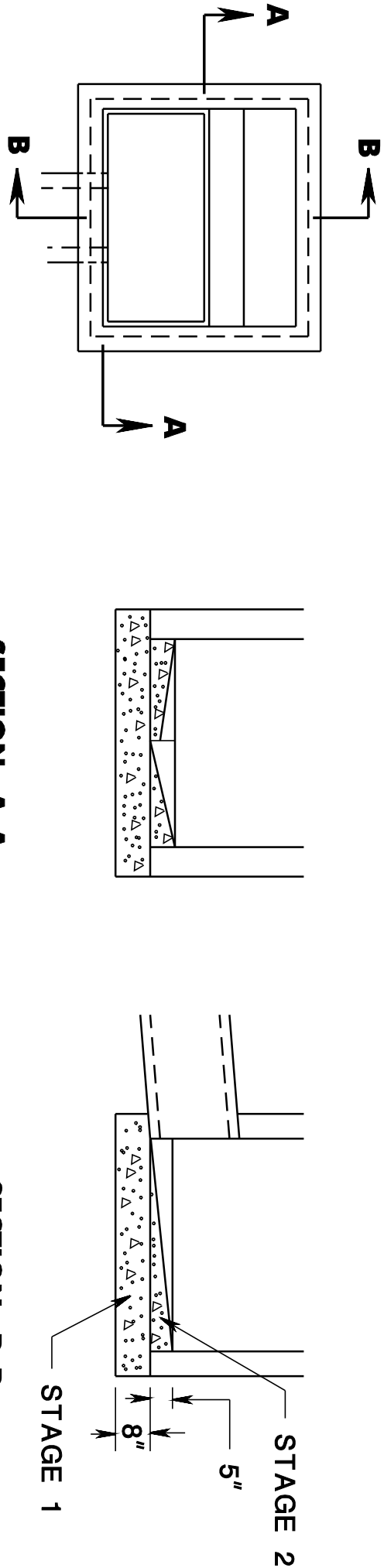
CD-602-1.2



NOTE:
LADDER RUNGS FACING TRAFFIC 12" C TO C

LADDER RUNG DETAIL

CD-602-1.3

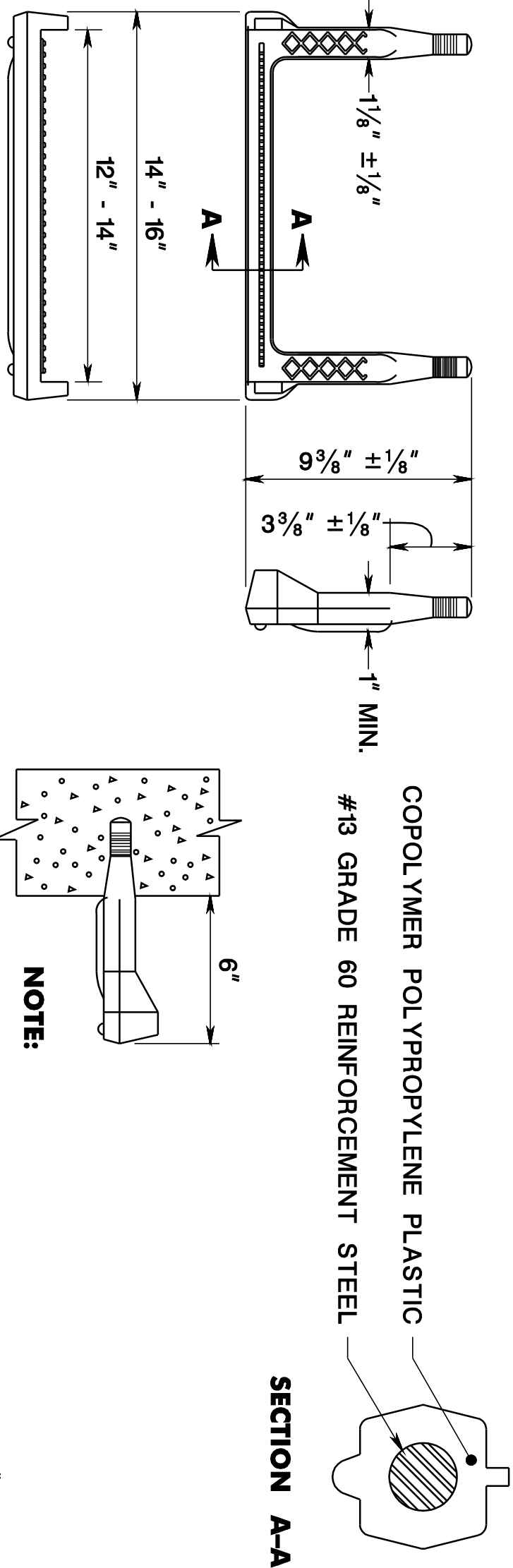


NOTE:

FOUNDATION AND INVERT TO BE CONSTRUCTED IN TWO STAGES, THE TOP SURFACE OF STAGE 1 TO BE LEFT ROUGH.

DETAIL OF INVERT FOR INLET WITHOUT CONTINUOUS PIPE

CD-602-1.4

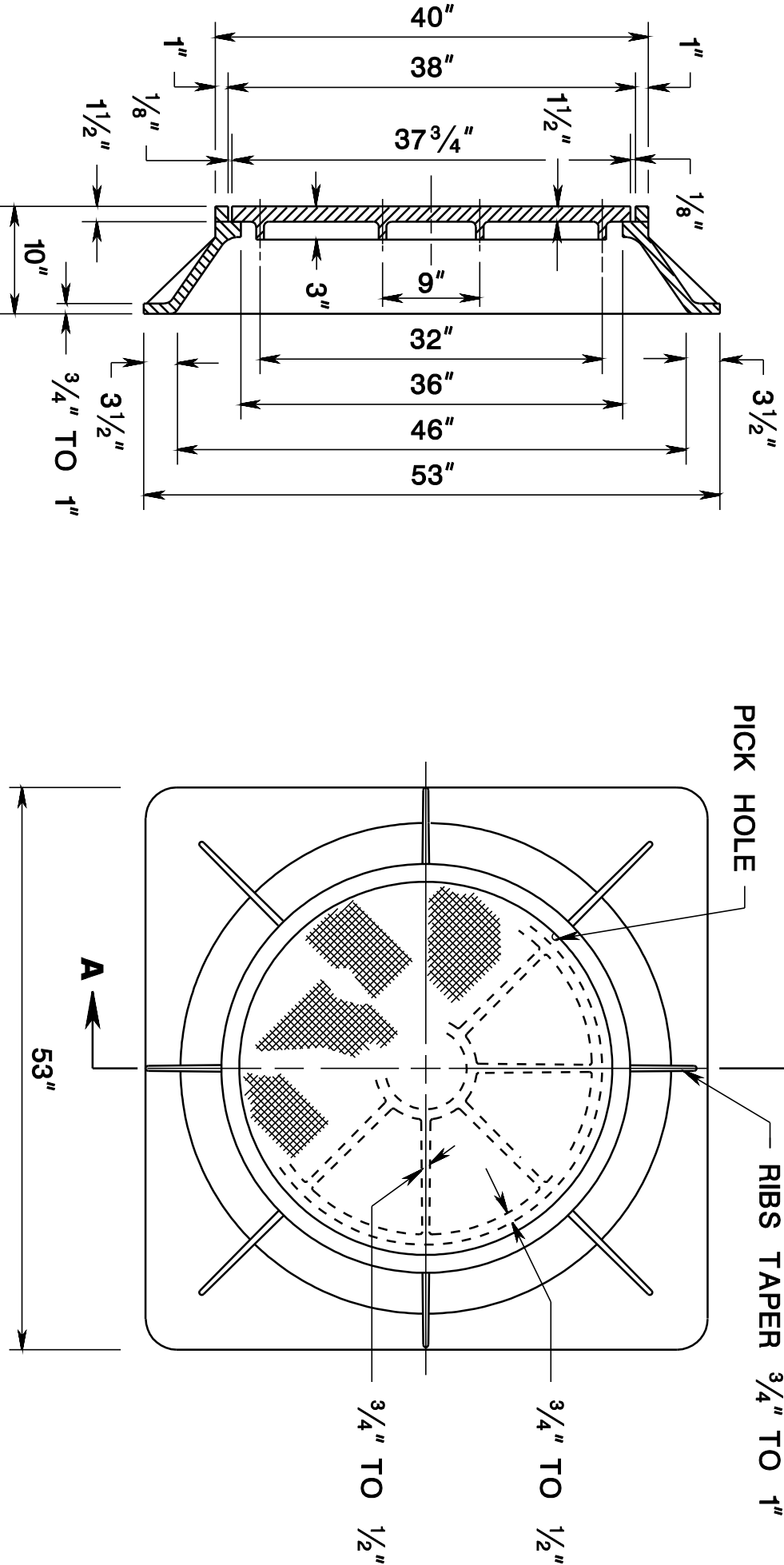


NOTE:

LADDER RUNGS FACING TRAFFIC 12" C TO C

COPOLYMER POLYPROPYLENE PLASTIC LADDER RUNG

CD-602-1.5



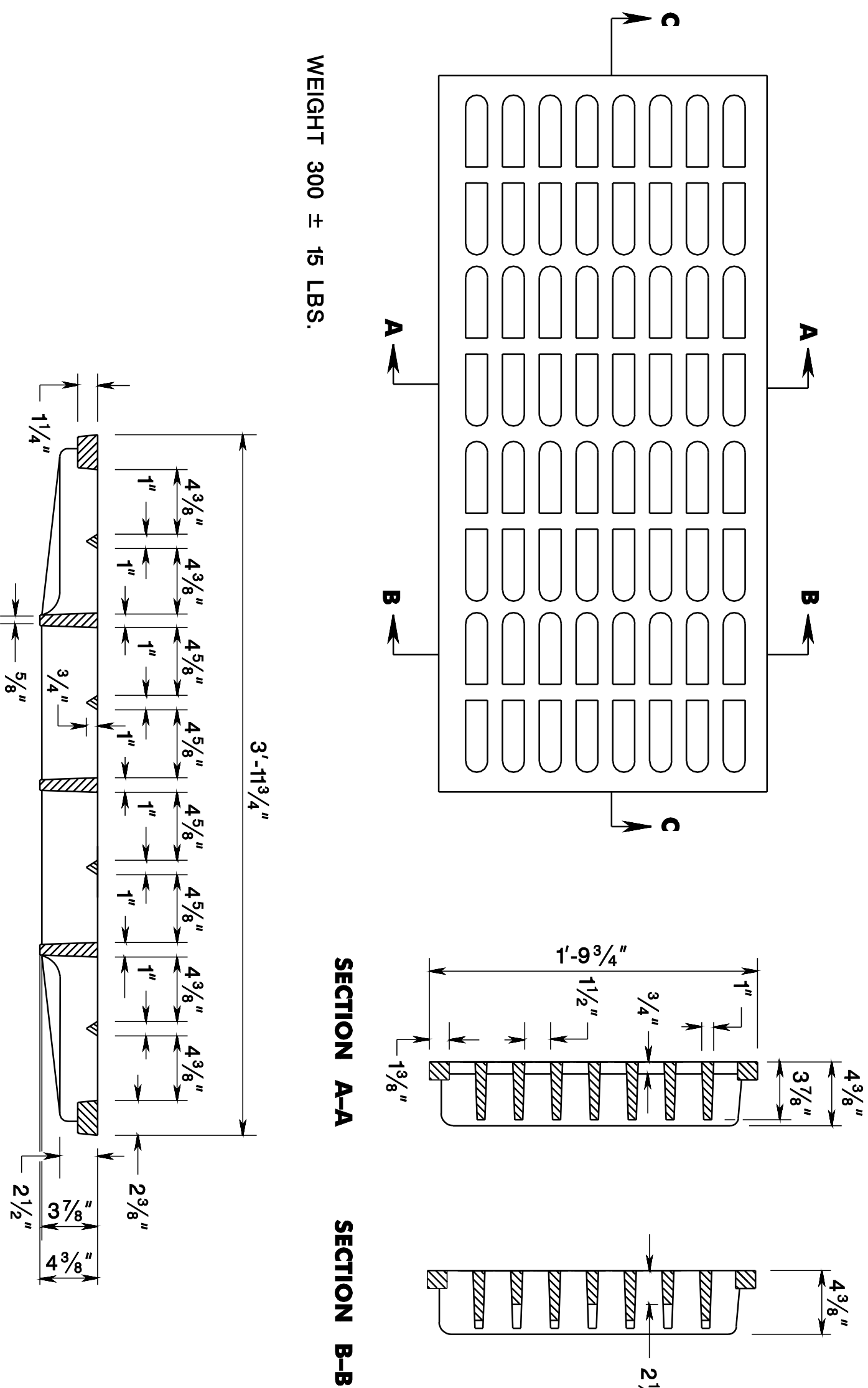
NOTE:

SEE GENERAL NOTE 9, CD-602-1.6

MINIMUM WEIGHTS
WEIGHT OF FRAME = 630#
WEIGHT OF COVER = 400#

SQUARE FRAMED MANHOLE CASTING, CIRCULAR COVER

CD-602-1.7



NOTE:

SEE GENERAL NOTE 9, CD-602-1.6

BICYCLE SAFE GRATE (CAST IRON)

CD-602-1.8

GENERAL NOTES:

- INLETS MAY BE CONSTRUCTED OF BRICK, CONCRETE, CONCRETE BLOCK, OR PRECAST CONCRETE. WALLS TO BE 8 INCHES THICK IF BRICK AND 6 INCHES THICK IF CONCRETE, CONCRETE BLOCK, OR PRECAST CONCRETE. INLET FOUNDATIONS AND INVERTS TO BE CLASS B CONCRETE.
- CORRELLING OF INLET WALLS WILL BE PERMITTED AT THE RATE OF 1/2 INCH PER 8 INCHES OF HEIGHT; MAXIMUM CORBEL 6 INCHES PER WALL.
- EXCEPT FOR INLETS TYPE A AND C, FOUNDATIONS AND INVERTS TO BE CONSTRUCTED IN TWO STAGES, AND THE BOTTOM OF THE FOOTINGS TO BE 8 INCHES BELOW THE OUTER WALL OF THE LOWEST PIPE IN THE INLET.
- WHEN THE DEPTH OF AN INLET THAT IS NOT PRECAST EXCEEDS 10 FEET AS MEASURED FROM TOP OF GRATE TO INVERT, WALLS BELOW A DEPTH OF 8 FEET TO BE 12 INCHES THICK AND THE DEPTH OF FOUNDATION INCREASED TO 12 INCHES, WHEN ROCK IS ENCOUNTERED, THE DEPTH OF THE FOUNDATION NOT TO BE INCREASED.
- PLACE INLET FOUNDATIONS WHICH ARE PRECAST ON A 6 INCH THICK BED OF COMPACTED COARSE AGGREGATE BEYOND THE HORIZONTAL LIMITS OF THE INLET FOUNDATION.
- ADJUST CASTINGS FOR PRECAST INLETS TO GRADE WITH COURSES OF BRICK, AS REQUIRED, 12 INCHES MAXIMUM.
- WHEN THE DEPTH OF A PRECAST INLET EXCEEDS 10 FEET AS IS TO BE INCREASED FROM TOP OF INVERT, THE FOUNDATION IS TO BE INCREASED TO 12 INCHES, WHEN ROCK IS ENCOUNTERED, THE DEPTH OF THE FOUNDATION IS NOT TO BE INCREASED.
- MINIMUM WALL REINFORCEMENT FOR PRECAST INLETS TYPES A, B, C, E, D-1, D-2, AND B MODIFIED:

DEPTH BELOW TOP OF GRATE	HORIZONTAL REINF.	VERTICAL REINF.	WALL THK.
0' TO 10'-0"	#13 @ 10" C.C.	#13 @ 18" C.C.	6"
10'-1" TO 15'-0"	#13 @ 8" C.C.	#13 @ 18" C.C.	6"
15'-1" TO 20'-0"	#13 @ 6" C.C.	#13 @ 18" C.C.	6"

REINFORCEMENT SHOWN FOR PRECAST INLETS IS THE MINIMUM REQUIRED. ADDITIONAL REINFORCEMENT FOR HANDLING IS THE RESPONSIBILITY OF THE CONTRACTOR.
ALTERNATE REINFORCEMENT
DEPTH BELOW TOP OF GRATE
0' TO 10'-0"
WWE 3 x 6 W6 WIRES SPACED AT 3"
TO RUN HORIZONTAL IN ALL CASES.
10'-1" TO 15'-0"
WWE 3 x 6 W6 ADD #10 REINFORCEMENT STEEL @ 18" HORIZONTAL.
15'-1" TO 20'-0"
WWE 3 x 6 W6 ADD #10 REINFORCEMENT STEEL @ 9" HORIZONTAL OR ADD #13 REINFORCEMENT STEEL AT 15" HORIZONTAL.
- DIMENSIONS, WEIGHTS, AND OTHER CRITERIA SHOWN ON THESE DETAILS ARE FOR CLASS 358 CAST IRON.
- PAY ITEM INCLUDES EXCAVATION, SUBBASE CLASS B CONCRETE (ROADWAY), HMA COURSES, AND REMOVAL AND RESTORATION OF EXISTING PIPES TO COMPLETE THE INSTALLATION OF INLET OR MANHOLE.
- REINFORCEMENT STEEL IS IN METRIC UNITS
- ALL INLETS, REGARDLESS OF TYPE, SHALL HAVE PERMANENT WORDING CAST INTO THE GRATE AND/OR CURB PIECE STATING "NO DUMPING, DRAINS TO WATERWAYS" OR OTHERWISE APPROVED BY THE RE.

CD-602-1.6

INLET GENERAL DETAILS

N.T.S.

CD-602-1

NEW JERSEY DEPARTMENT OF TRANSPORTATION

CONSTRUCTION DETAILS