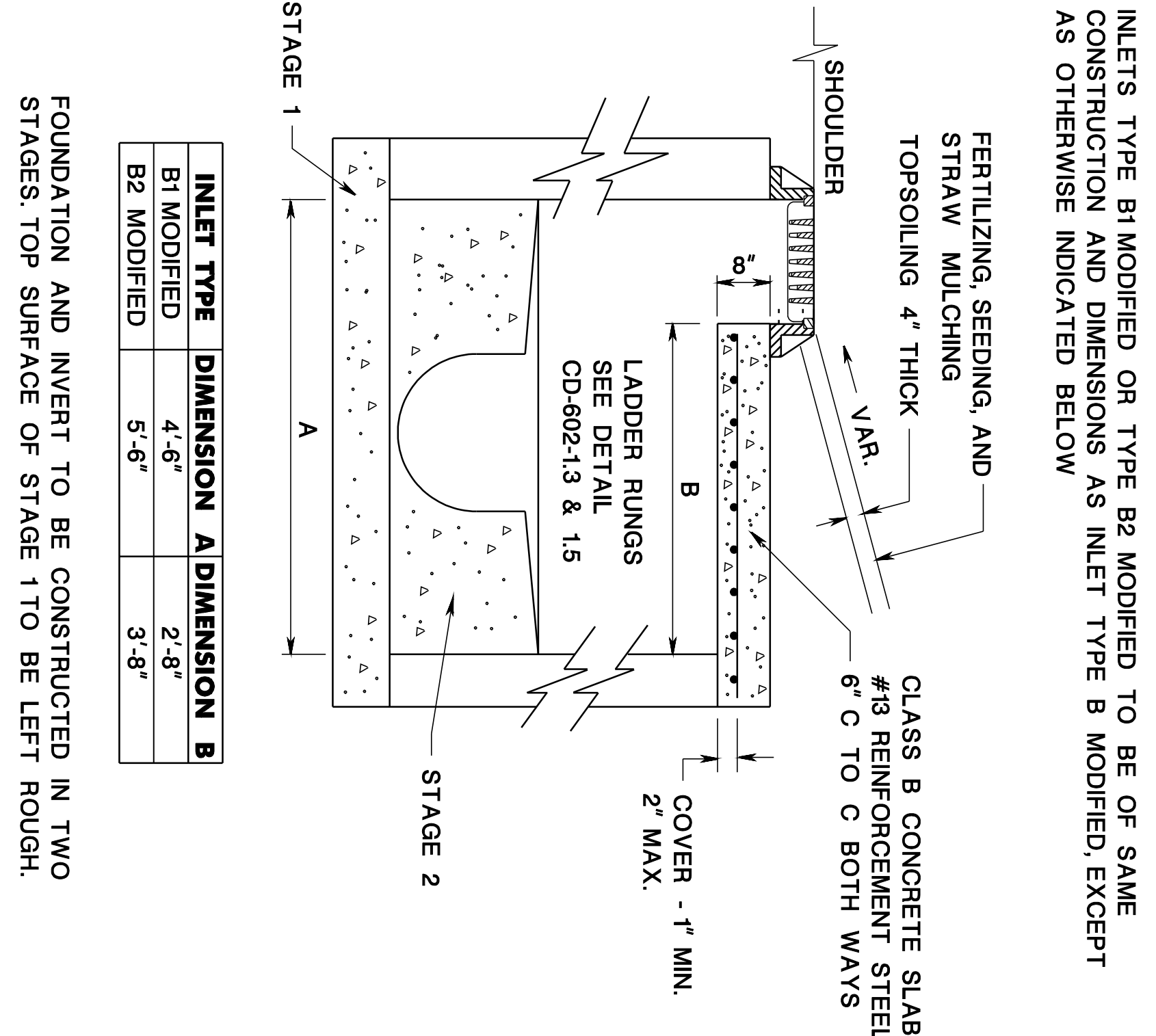


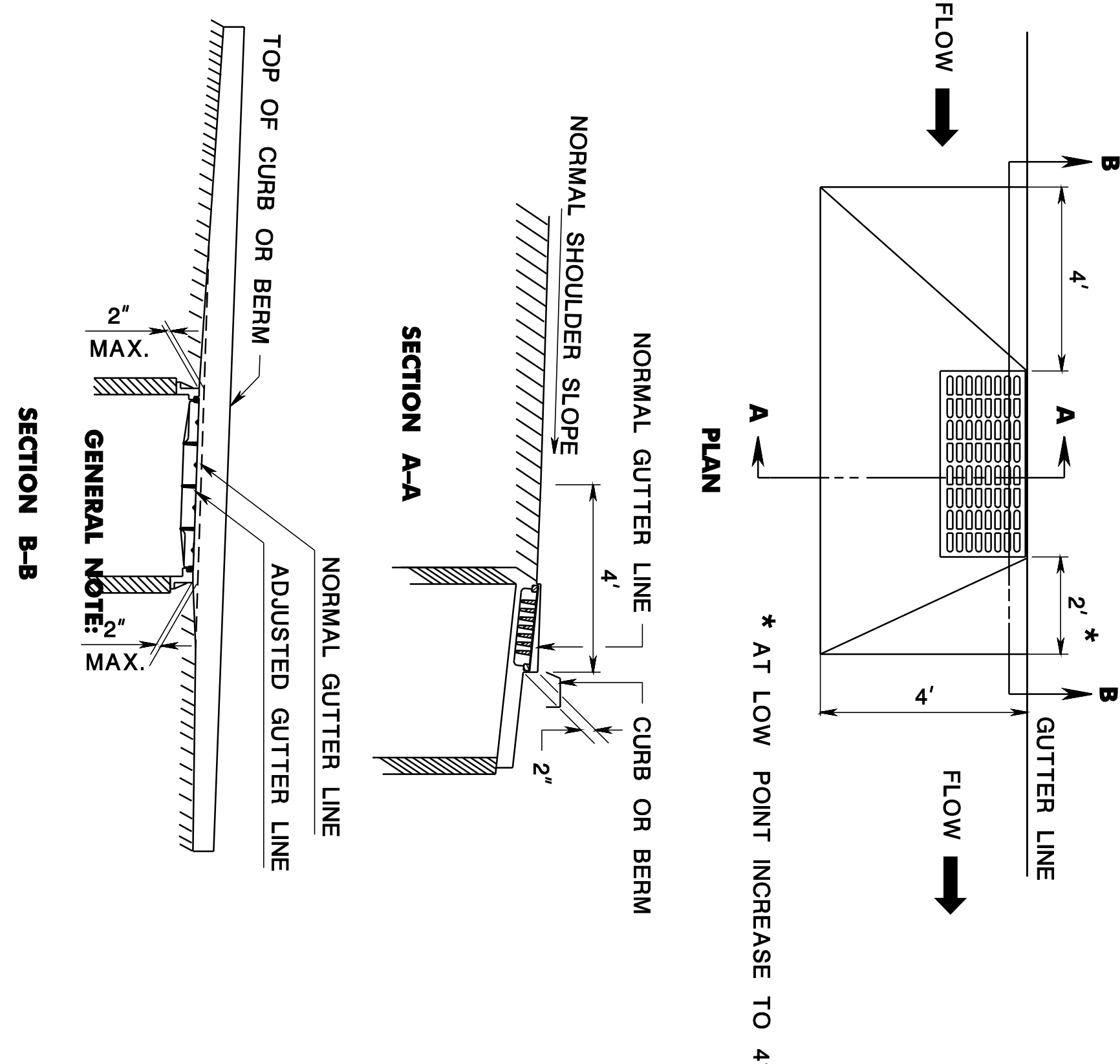
INLET, TYPE B MODIFIED

CD-602-3.1



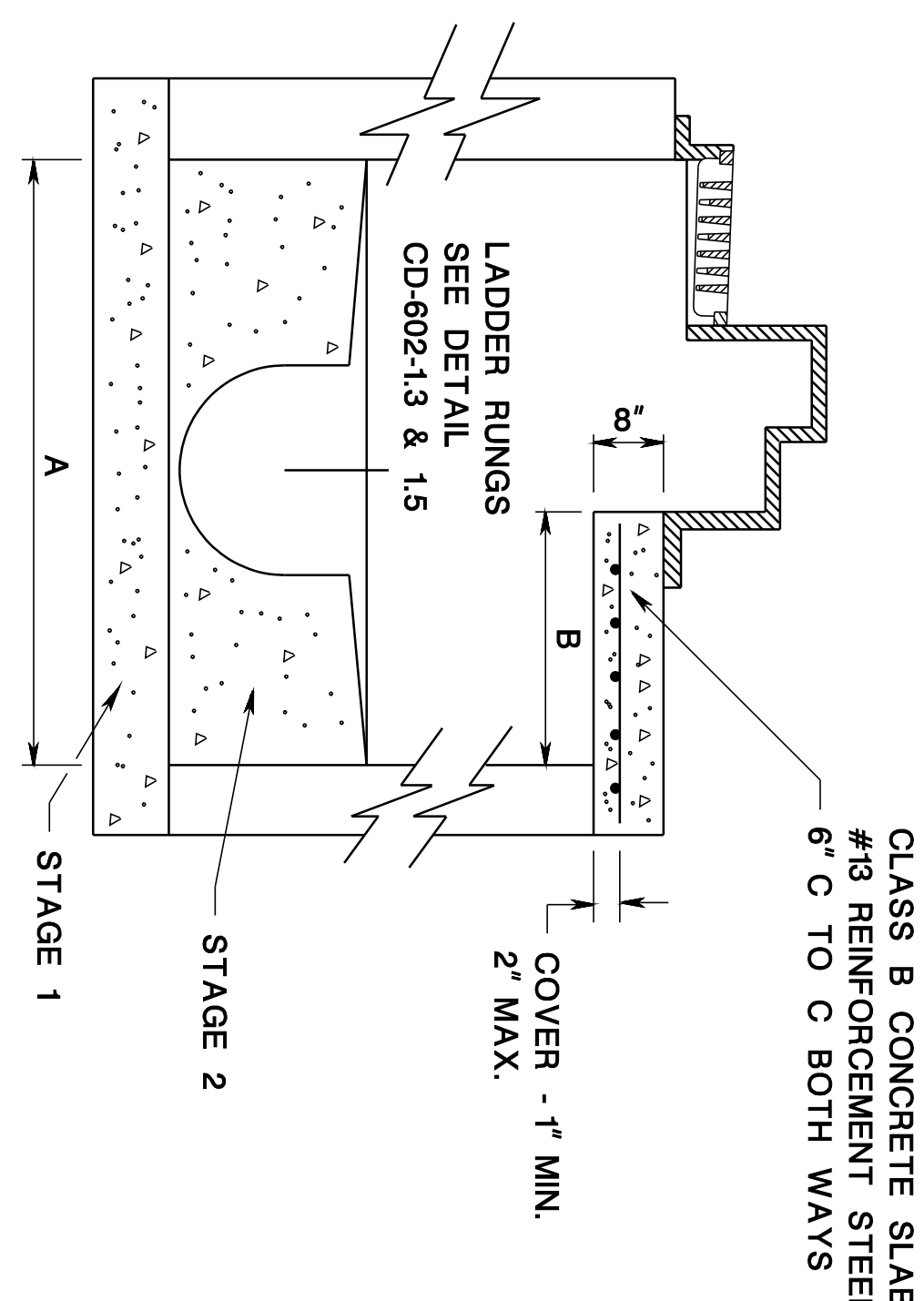
CD-602-3.2

METHOD OF DEPRESSING INLETS AT SHOULDERS



CD-602-3.3

INLETS, TYPE B1 OR TYPE B2 TO BE OF SAME CONSTRUCTION AND
DIMENSIONS AS INLET TYPE B, EXCEPT AS OTHERWISE INDICATED BELOW.



CD-602-3.6

GENERAL NOTE:
1. SEE GENERAL NOTES AT CD-602-1.6.

CONSTRUCTION DETAILS

NEW JERSEY DEPARTMENT OF TRANSPORTATION

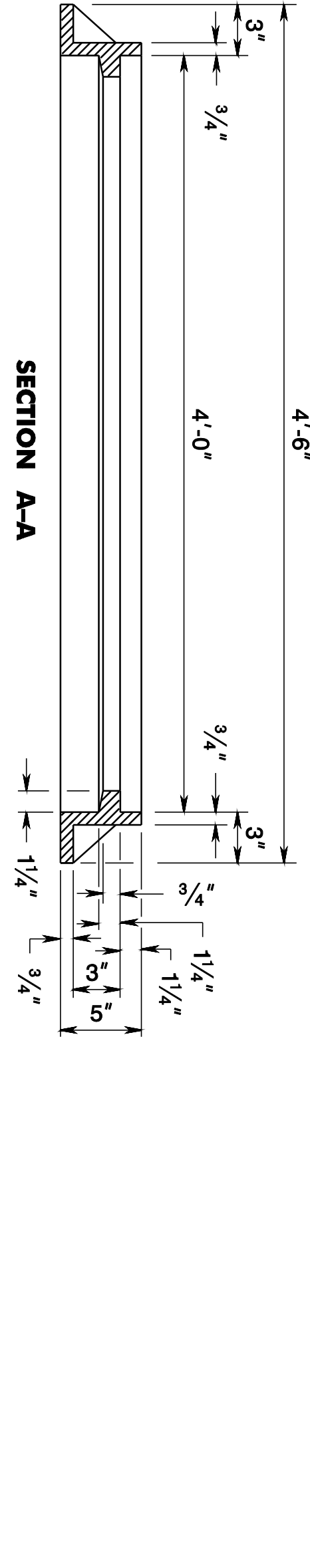
CD-602-3

INLETS, TYPE B1, B2, &
B, B1, & B2 MODIFIED

N.T.S.

CD-602-3.4

FRAME TO BE USED FOR INLET, TYPE B MODIFIED



CD-602-3.4