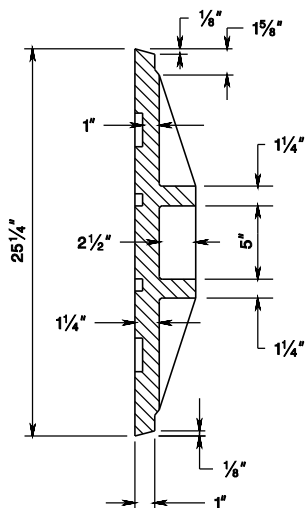
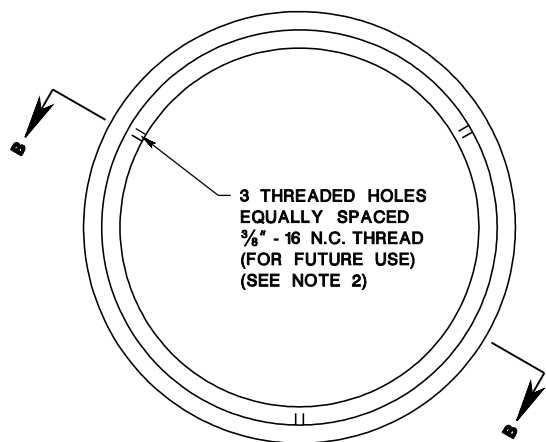


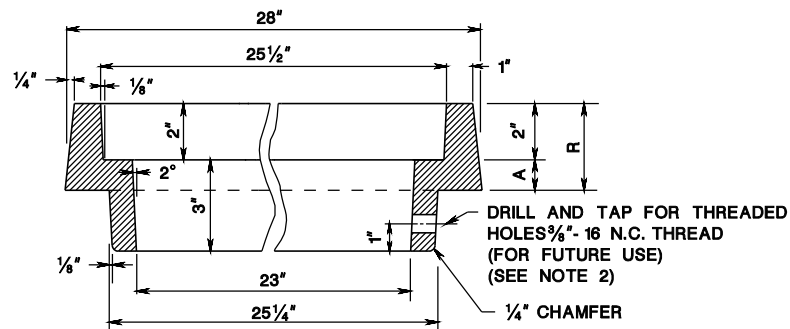
HEAVY DUTY COVER



SECTION A-A

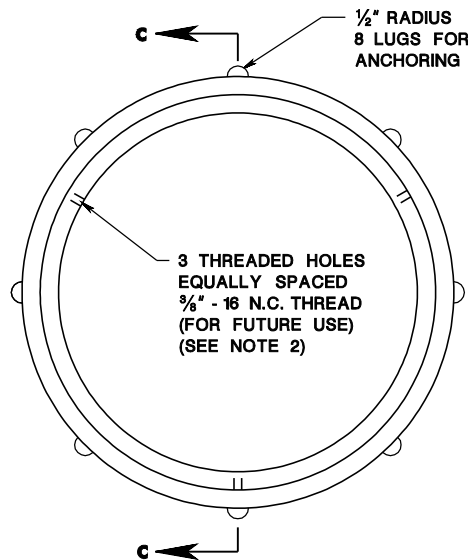


EXTENSION RING FOR MANHOLE COVER

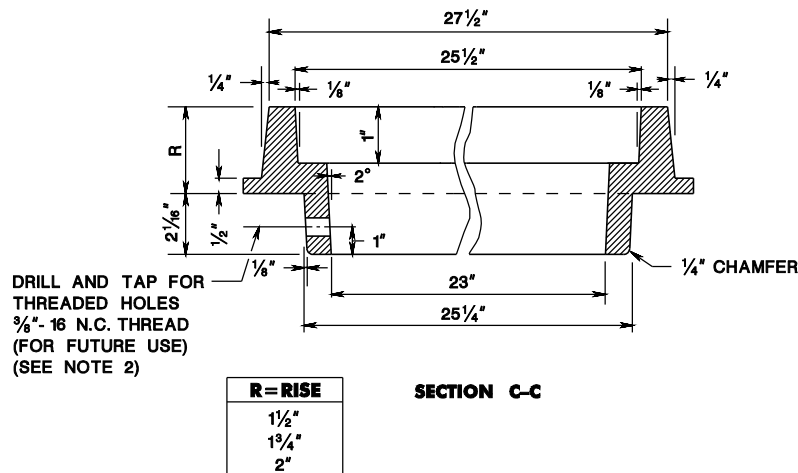


SECTION B-B

R = RISE R = A + 2"	A
2 1/2"	1/2"
3"	1"
3 1/2"	1 1/2"

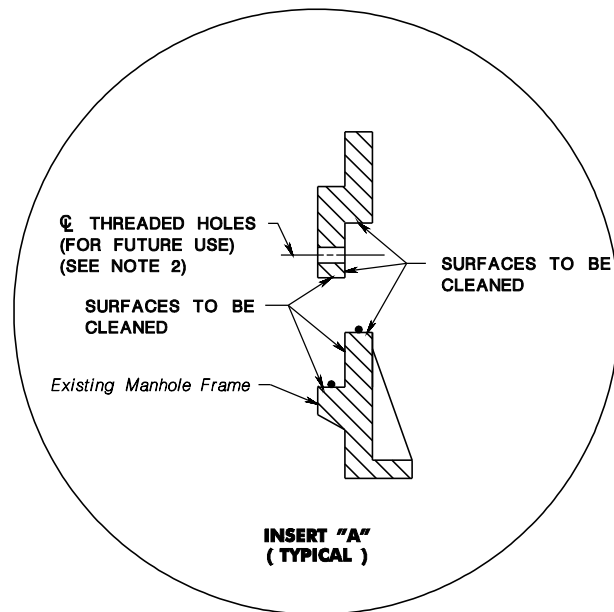


**EXTENSION RING FOR HEAVY DUTY COVER
(SEE NOTE 3)**



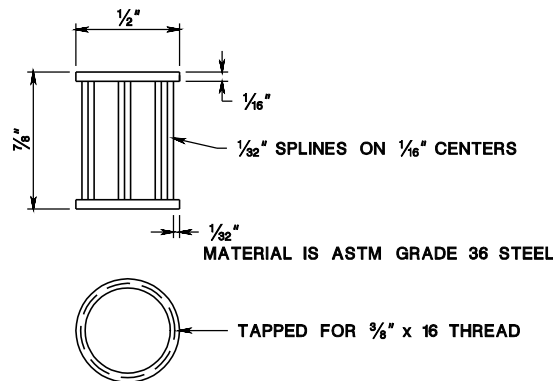
R = RISE
1 1/2"
1 3/4"
2"

SECTION C-C

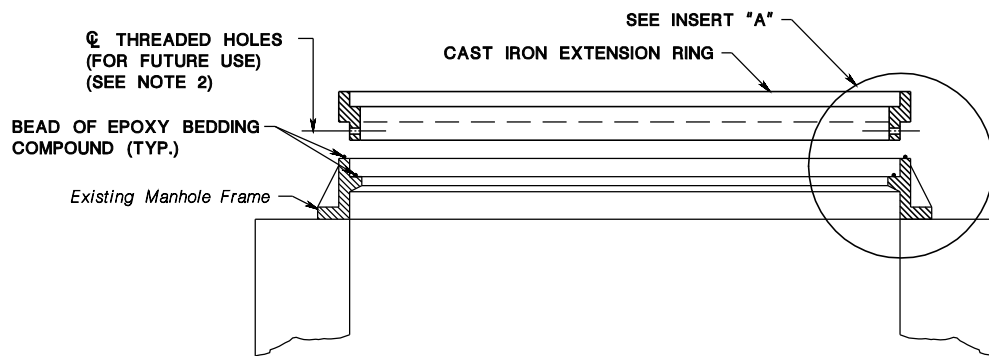


NOTES:

1. MEASURE THE EXISTING MANHOLE FRAMES AND COVERS TO DETERMINE PROPER DIMENSIONS OF PROPOSED EXTENSION RINGS BEFORE PLACING ORDER.
2. A THREADED INSERT MAY BE USED AS AN ALTERNATE TO DRILLING AND TAPPING.
3. A HEAVY DUTY COVER TO BE USED FOR A RISE OF 1 1/2" TO 2 1/4" INCLUSIVE.
4. SEE GENERAL NOTE 9, CD-602-1.6.



THREADED INSERT FOR EXTENSION RING, ALTERNATE



METHOD OF ATTACHING EXTENSION RING

**EXTENSION RING
FOR EXISTING MANHOLE**

N.T.S.

NEW JERSEY DEPARTMENT OF TRANSPORTATION

CONSTRUCTION DETAILS

CD-602-7.1