

pen table=\\NDOT\RT\W\Vegetation\NDOT\TBS\Roadway\Details_13x17.tbl

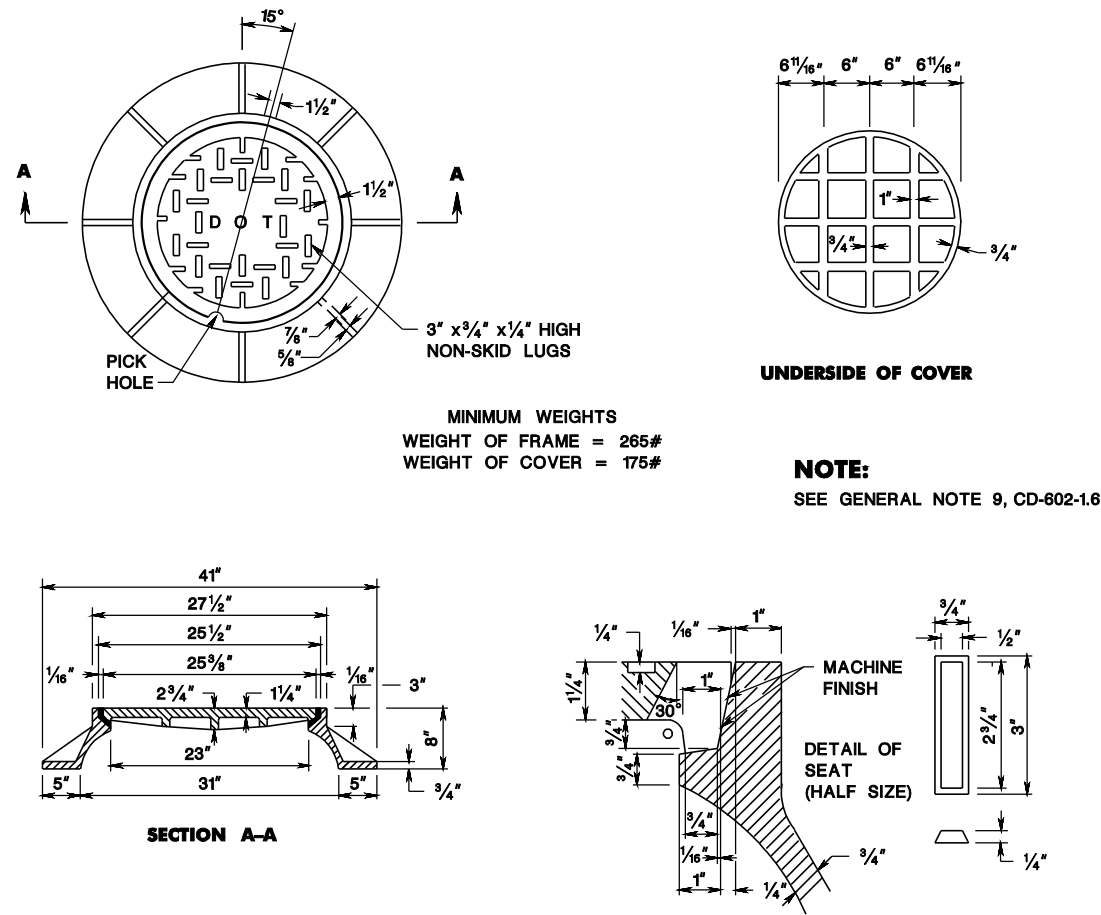
scale=63.073306:1.000000

date=28-SEP-2016 11:07

ID=TP2VLL

BD-CRD-01-ORIGINAL SHEET

file=



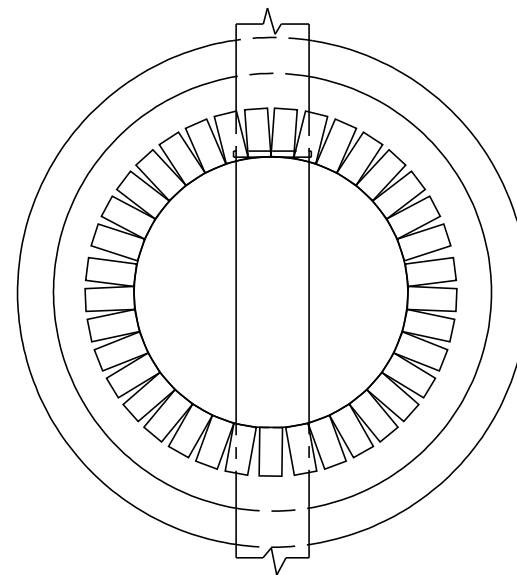
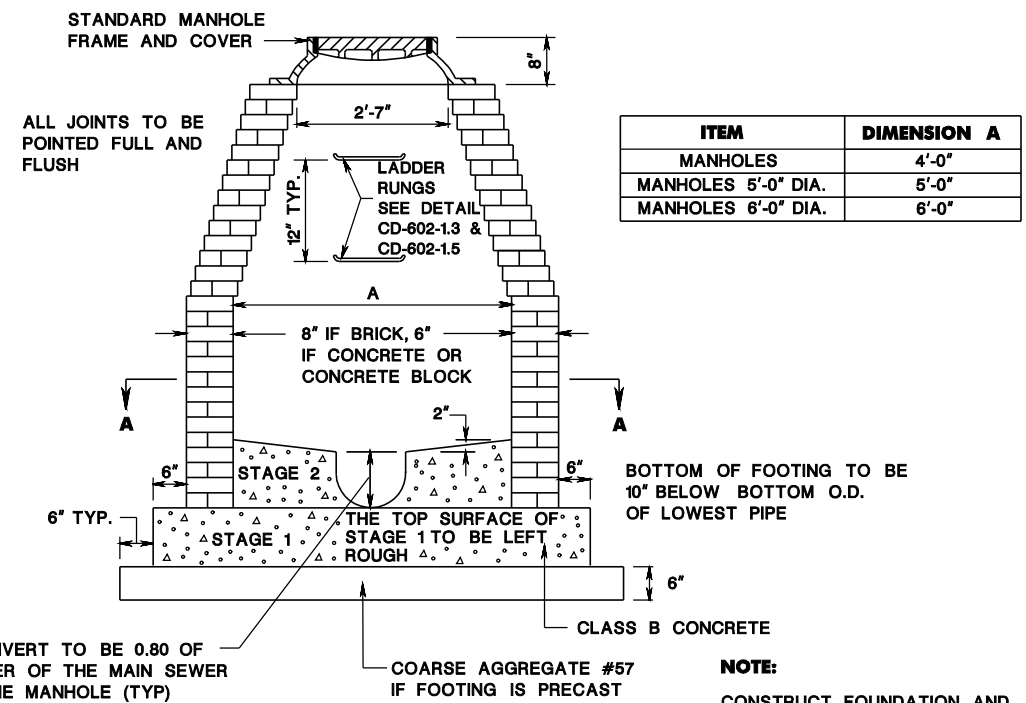
MANHOLE FRAME AND COVER

CD-602-8.1

GENERAL NOTES:

1. MANHOLE MAY BE CONSTRUCTED OF BRICK, CONCRETE, CONCRETE BLOCK, OR PRECAST CONCRETE.
2. WHEN THE DEPTH OF A MANHOLE EXCEEDS 10 FEET AS MEASURED FROM TOP OF COVER TO INVERT, THE WALLS OF BRICK, CONCRETE, OR CONCRETE BLOCK BELOW A DEPTH OF 8 FEET TO BE 12 INCHES THICK. THE OVERALL HORIZONTAL DIMENSIONS TO BE INCREASED 12 INCHES AND THE DEPTH OF THE FOUNDATION INCREASED TO 12 INCHES. WHEN ROCK IS ENCOUNTERED, THE HORIZONTAL DIMENSION AND DEPTH OF THE FOUNDATION IS NOT TO BE INCREASED. THE THICKNESS OF PRECAST CONCRETE MANHOLE WALLS DOES NOT HAVE TO BE INCREASED IF THE DEPTH OF THE MANHOLE EXCEEDS 10 FEET.
3. ADJUST CASTINGS OF PRECAST MANHOLES TO GRADE WITH COURSES OF BRICK OR CONCRETE BLOCK, AS REQUIRED, 12 INCHES MAXIMUM.
4. AS AN ALTERNATE TO THE STANDARD MANHOLE FRAME AND COVER, A 39 INCH DIAMETER FRAME WITH 4 INCH FLANGE MAY BE FURNISHED WITH ALL OTHER DIMENSIONS AND WEIGHTS REMAINING THE SAME.
5. IN A BRICK, CONCRETE, OR CONCRETE BLOCK MANHOLE, CONSTRUCT THE INVERT IN TWO STAGES.
6. AS AN ALTERNATIVE, COPOLMYER POLYPROPYLENE PLASTIC LADDER RUNGS MAY BE FURNISHED IN PRECAST MANHOLES AND INLETS.

CD-602-8.3



SECTION A-A

MANHOLE 5 FOOT DIAMETER,
MANHOLE 6 FOOT DIAMETER

MANHOLE
N.T.S.

CD-602-8

NEW JERSEY DEPARTMENT OF TRANSPORTATION

CONSTRUCTION DETAILS

CD-602-8.2