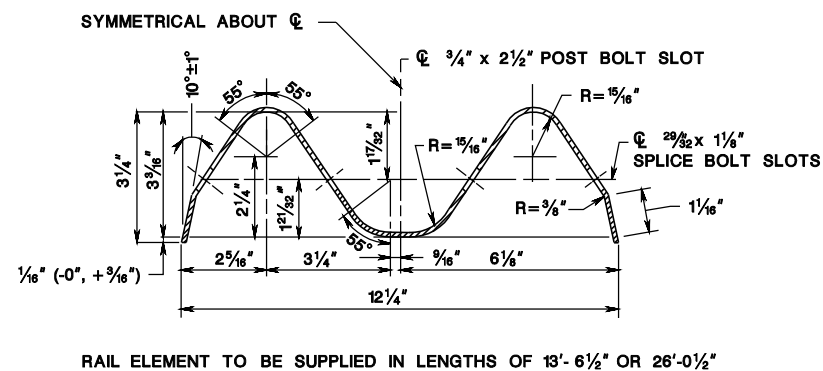
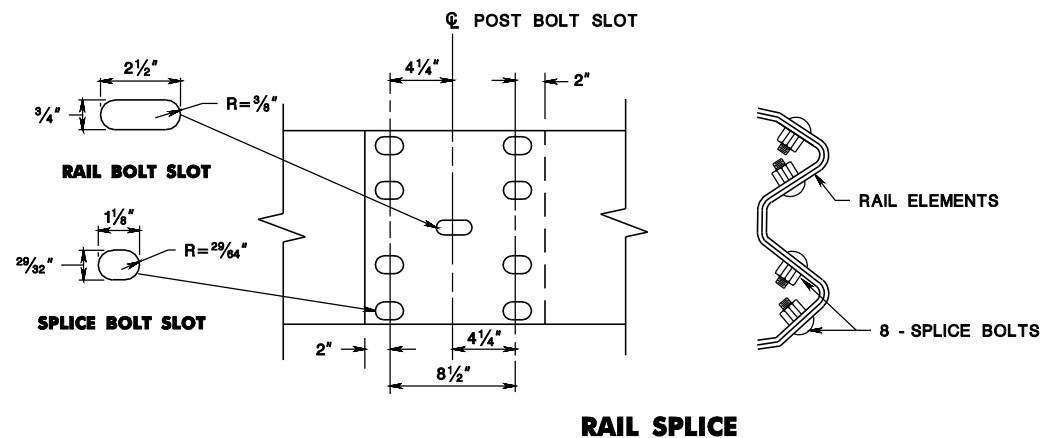


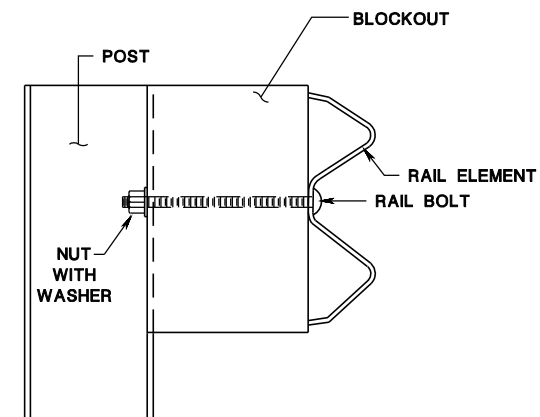
pen table=\\NDOT\PRG\WS\Projects\NDOT\Eng\plant\TEL\Roadway\Details_11x17.dtl
scale=64.424098:1.000000
date=19-JUL-2017 14:34
ID=TP2VLL
BDC7D-02-REVISIONS TO CD-609-1
BDC6D-01-ORIGINAL SHEET



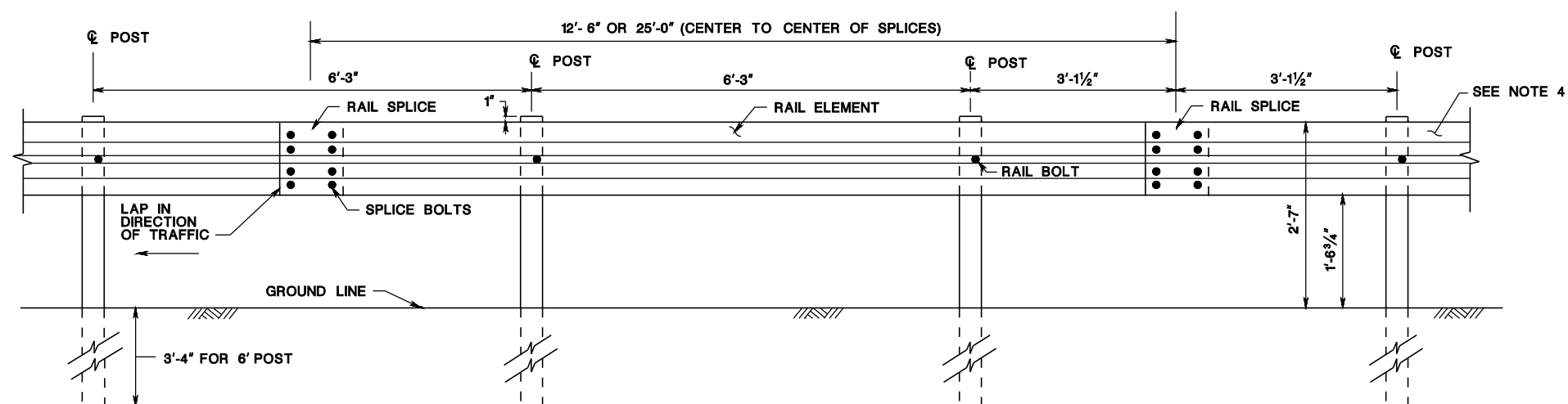
W-BEAM RAIL ELEMENT



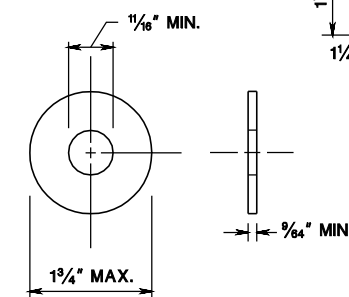
RAIL SPLICE



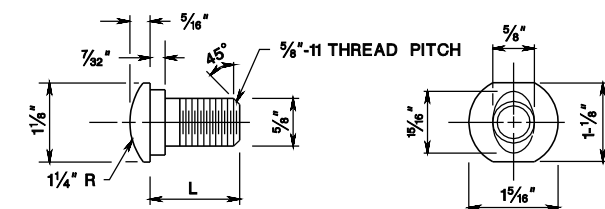
BEAM GUIDE RAIL POST ASSEMBLY



BEAM GUIDE RAIL

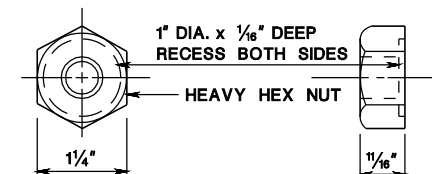


STEEL WASHER



TYPE	L	MIN. THREAD LENGTH
SPLICE	1 $\frac{1}{4}$ "	FULL LENGTH THREAD
RAIL	9 $\frac{1}{2}$ "	1 $\frac{3}{4}$ "

$\frac{5}{8}$ " DIA. BUTTON HEAD BOLT



$\frac{5}{8}$ " DIA. RECESS NUT

SPLICE & RAIL NUT & BOLT

BEAM GUIDE RAIL (MASH TL-3)

N.T.S.

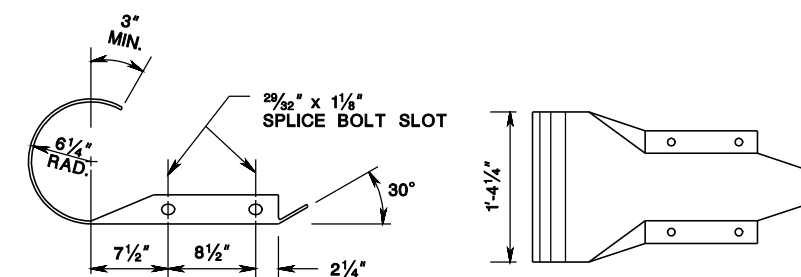
CD-609-1

NEW JERSEY DEPARTMENT OF TRANSPORTATION

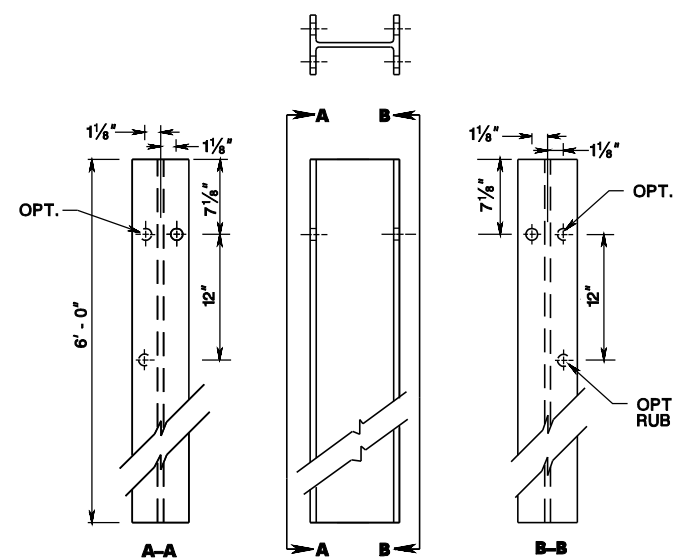
CONSTRUCTION DETAILS

NOTES:

- ALL DIMENSIONS ARE SUBJECT TO MANUFACTURING TOLERANCES.
- FURNISH RAIL ELEMENTS SHOPCURVED, CONCAVE OR CONVEX, FOR RADII BETWEEN 20 AND 150 FEET.
- WHERE TRANSITIONING TO EXISTING GUIDE RAIL, AN END TERMINAL, OR A CRASH CUSHION MOUNTED AT A HEIGHT OTHER THAN 2'-7", THE VERTICAL TRANSITION TO BE ACCOMPLISHED IN A MINIMUM LENGTH OF 12'-6" FOR EACH 2" OF VERTICAL CHANGE. SEE CD-609-8.
- INSTALL AN END TERMINAL AS SHOWN ON THE PLANS. USE THE END SECTION (ROUNDED) ON THE END OF THE RAIL ELEMENT WHERE DUAL FACED BEAM GUIDE RAIL ENDS AND SINGLE FACED BEAM GUIDE RAIL BEGINS.

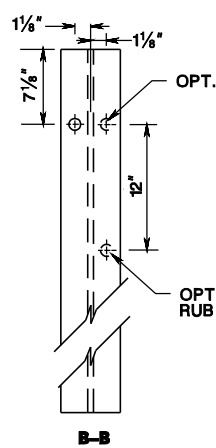


END SECTION (ROUNDED)



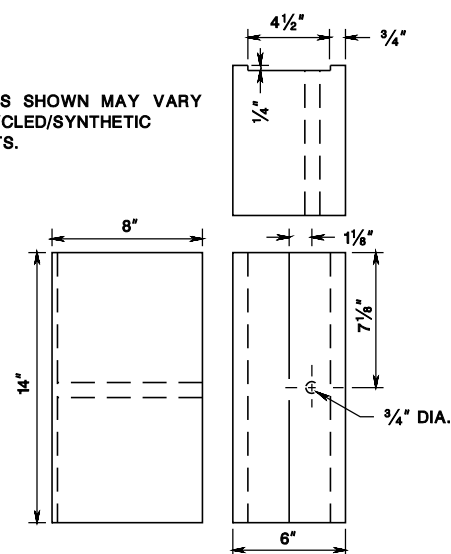
W6x8.5 OR W6x9 STEEL POST

6' POST



NOTE:
ALL HOLES $\frac{13}{16}$ " DIA.

NOTE:
DIMENSIONS SHOWN MAY VARY
FOR RECYCLED/SYNTHETIC
BLOCKOUTS.



APPROVED RECYCLED/
SYNTHETIC MATERIALS

6"x8"x14" BLOCKOUT

CD-609-1.1