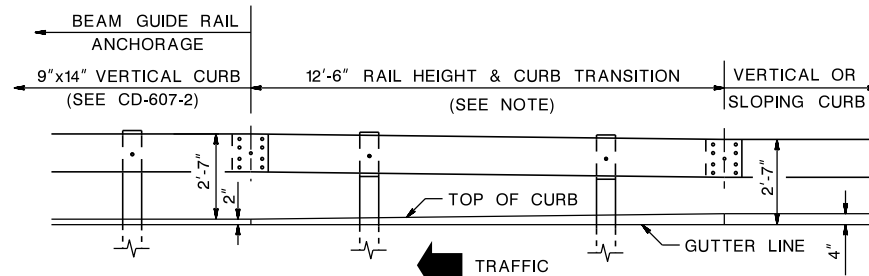
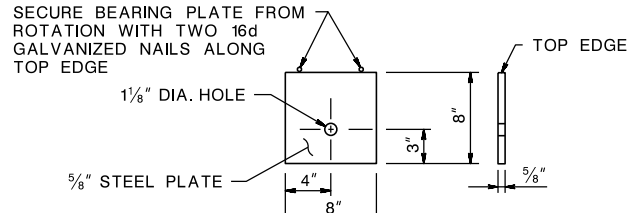
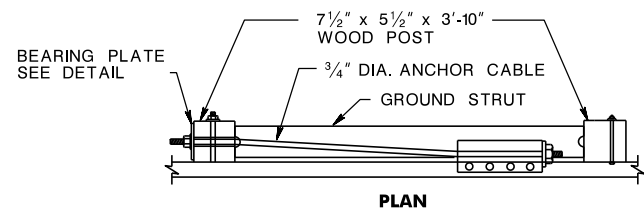
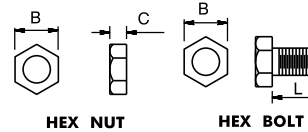


BD016D-07-ANCHORAGE WITH CURB REVISED  
BD017D-06-ANCHORAGE WITH CURB ADDED  
BD017D-02-REVISIONS TO CD-609-4  
BD016D-01-ORIGINAL SHEET



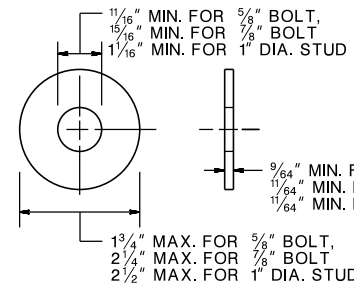
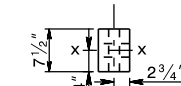
**NOTE:**  
WHERE GUIDE RAIL IS OFFSET 4 FEET OR MORE FROM THE GUTTER LINE, RAIL HEIGHT IS MEASURED FROM THE GROUND LINE (CD-609-8A). A RAIL HEIGHT TRANSITION IS NOT REQUIRED.

**RAIL HEIGHT TRANSITION FOR GUIDE RAIL ANCHORAGE WITH 2" VERTICAL CURB WHERE GUIDE RAIL IS OFFSET LESS THAN 4 FEET FROM THE GUTTER LINE**

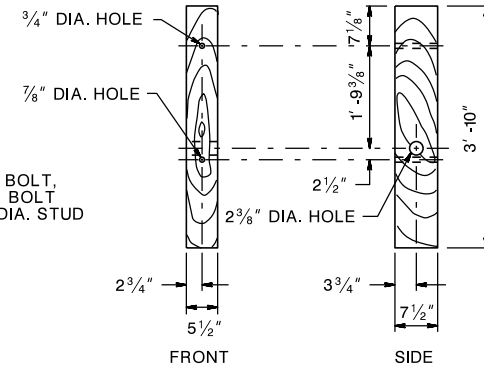


BOLT SIZE	THREAD PITCH	A	B	C	L
5/8"	5/8-11	5/8"	15/16"	35/64"	1 1/2", 10"
7/8"	7/8-9	7/8"	1 5/16"	3/4"	8"

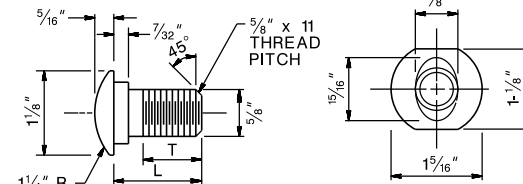
**HEX NUT AND BOLT**



**STEEL WASHER**

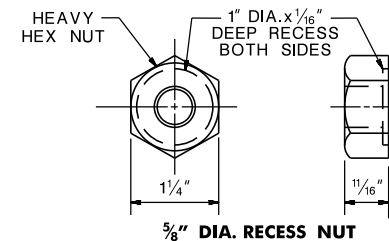


**WOOD POST**



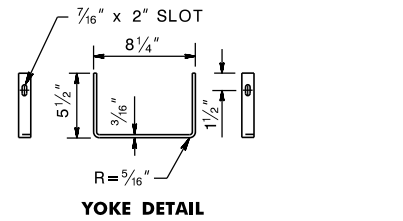
**5/8" DIA. BUTTON HEAD BOLT**

TYPE	L	MIN. THREAD LENGTH (T)
RAIL	10"	4"
SPLICE	1 1/4"	FULL LENGTH THREAD

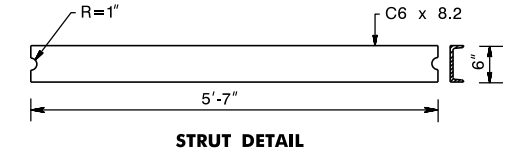


**RAIL NUT & BOLT**

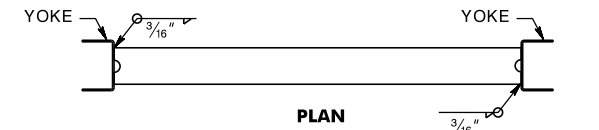
CD-609-4.1



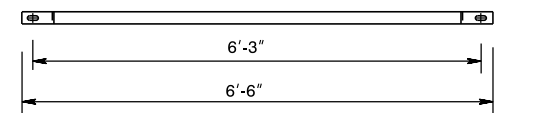
**YOKE DETAIL**



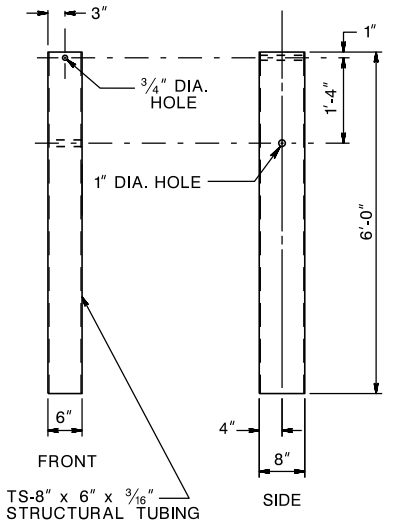
**STRUT DETAIL**



**PLAN**



**ELEVATION  
GROUND STRUT**



**FRONT**

TS-8" x 6" x 3/16" STRUCTURAL TUBING

**STEEL FOUNDATION TUBE**

**BEAM GUIDE RAIL ANCHORAGE (MASH TL-3)**

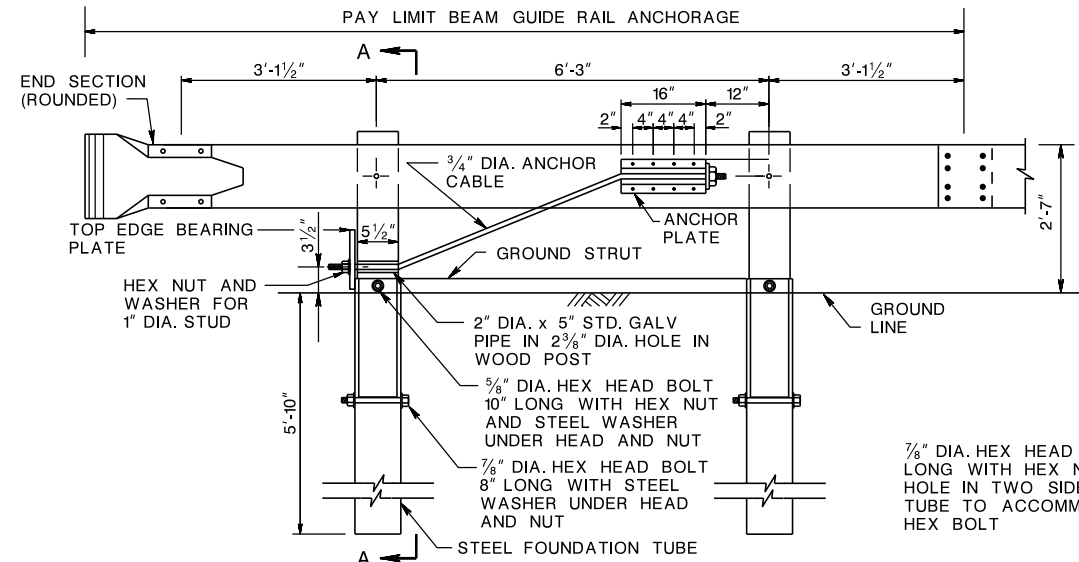
N.T.S.

CD-609-4

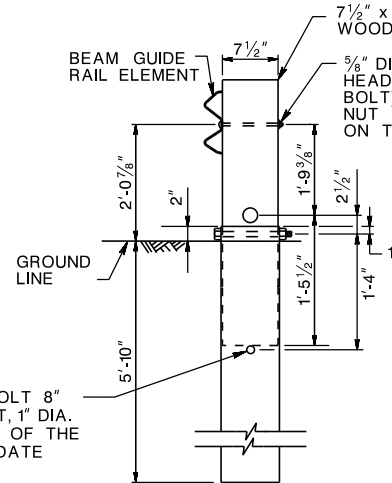
NEW JERSEY DEPARTMENT OF TRANSPORTATION

**CONSTRUCTION DETAILS**

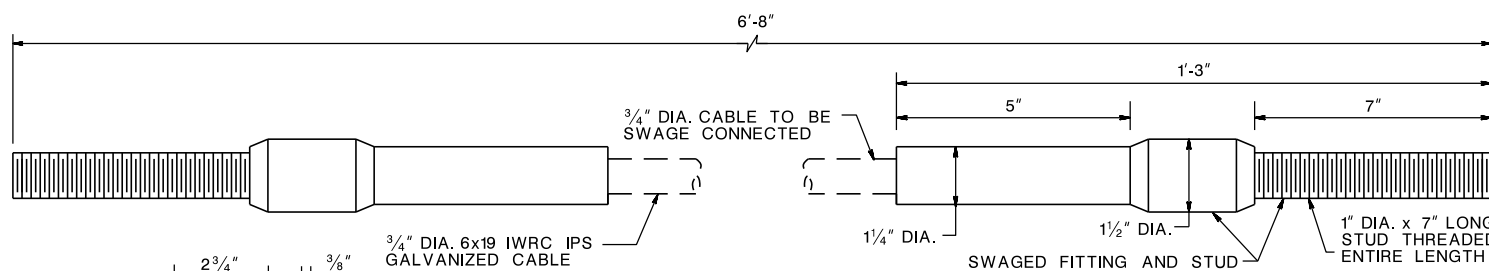
**ELEVATION  
BEAM GUIDE RAIL ANCHORAGE**



**BEARING PLATE**

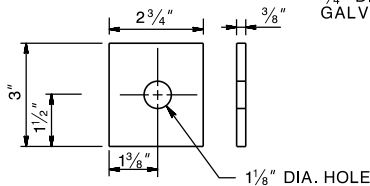


**SECTION A-A**

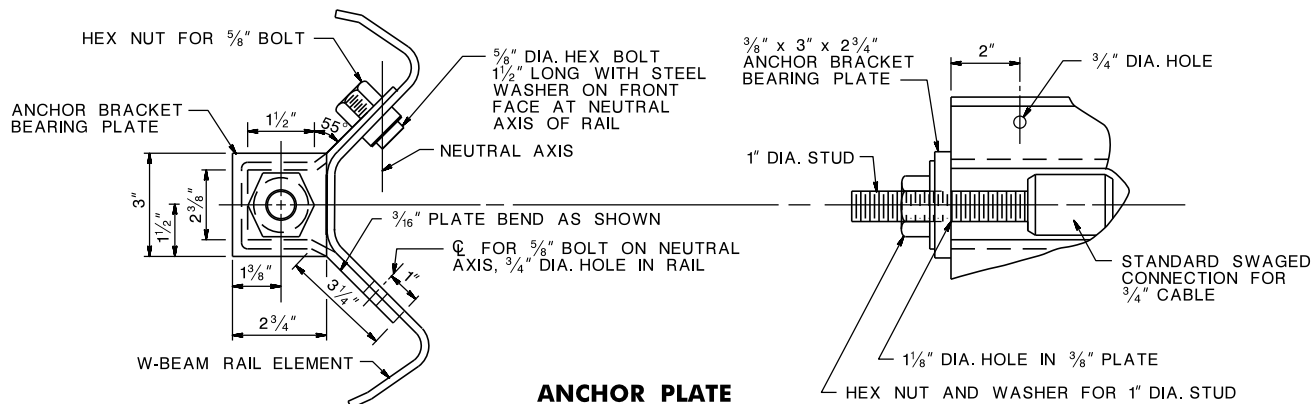


**CABLE ASSEMBLY**

**NOTE:**  
OTHER ANCHOR CABLE ASSEMBLIES MAY BE USED. MINIMUM BREAKING STRENGTH OF ASSEMBLY TO BE 42,700 LBS.



**ANCHOR BRACKET  
BEARING PLATE**



**ANCHOR PLATE**

**END SECTION (ROUNDED)**

