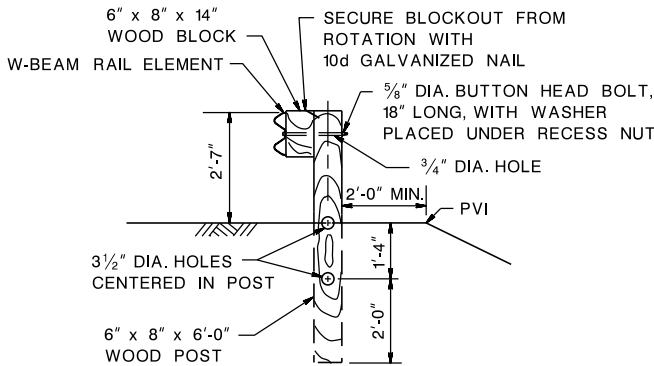


POST LAYOUT

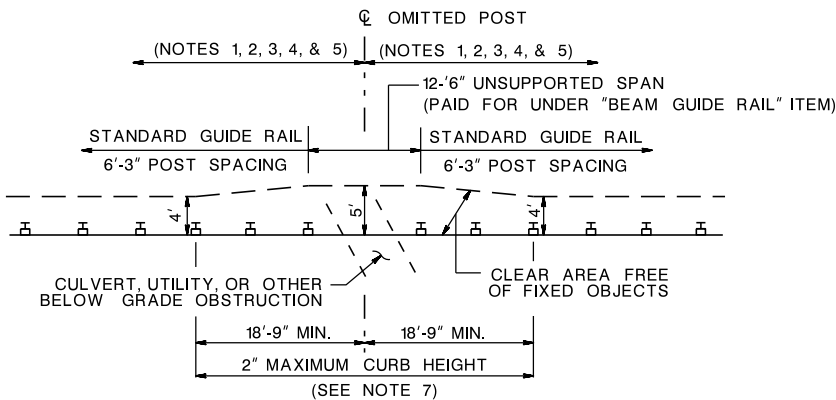
NOTES:

1. A MINIMUM OF TEN 6'-3" POST SPACES OF TANGENT GUIDE RAIL ARE REQUIRED BETWEEN THE OUTER CRT POSTS OF CONSECUTIVE 18-9" OR 25'-0" UNSUPPORTED SPANS.
2. THE OUTER CRT POSTS MUST BE A MINIMUM OF TEN 6'-3" POST SPACES FROM THE APPROACH END OF A TANGENT GUIDE RAIL TERMINAL AND EIGHT 6'-3" POST SPACES FROM THE BEGINNING OF A FLARE OR REDUCED POST SPACING.
3. THE OUTER CRT POSTS MUST BE A MINIMUM OF TEN 6'-3" POST SPACES FROM THE LAST POST OF AN END ANCHORAGE.
4. THE OUTER CRT POSTS MUST BE A MINIMUM OF SIX 6'-3" POST SPACES FROM A THRIE BEAM TO W-BEAM ASYMMETRICAL TRANSITION SECTION.
5. WHERE THERE IS CURB, THE MAXIMUM CURB HEIGHT IS 2" FROM 25' IN ADVANCE OF THE FIRST CRT POST ON THE APPROACH END TO 25' PAST THE LAST CRT POST ON THE TRAILING END.
6. THE REQUIRED CLEAR AREA FREE OF FIXED OBJECTS IS 7' FOR AN 18'-9" UNSUPPORTED SPAN AND 8' FOR A 25'-0" UNSUPPORTED SPAN.
7. IF THERE IS A VERTICAL DROPOFF BEHIND THE UNSUPPORTED SPAN, THE FACE OF RAIL MUST BE A MINIMUM OF 3' FROM THE DROPOFF.

18'-9" OR 25'-0" UNSUPPORTED SPAN



CRT POST FOR UNSUPPORTED SPAN



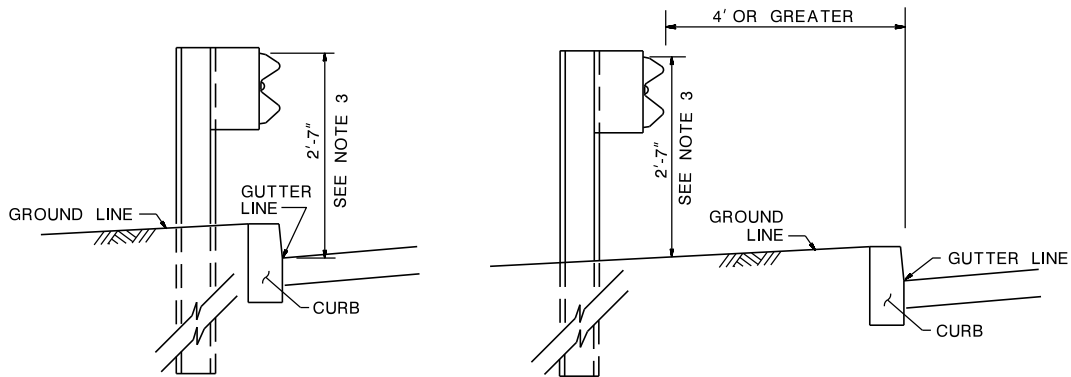
NOTES:

1. A MINIMUM OF NINE 6'-3" POST SPACES OF TANGENT GUIDE RAIL ARE REQUIRED BETWEEN TWO CONSECUTIVE SINGLE POST OMISSIONS.
2. THE OMITTED POST MUST BE A MINIMUM OF TEN 6'-3" POST SPACES FROM THE APPROACH END OF A TANGENT GUIDE RAIL TERMINAL AND FIVE 6'-3" POST SPACES FROM THE BEGINNING OF A FLARE OR REDUCED POST SPACING.
3. THE OMITTED POST MUST BE A MINIMUM OF TEN 6'-3" POST SPACES FROM THE LAST POST OF AN END ANCHORAGE.
4. THE OMITTED POST MUST BE A MINIMUM OF SIX 6'-3" POST SPACES FROM A THRIE BEAM TO W-BEAM ASYMMETRICAL TRANSITION SECTION.
5. THE OMITTED POST MUST BE A MINIMUM OF SEVEN 6'-3" POST SPACES FROM AN OUTER CRT POST OF AN 18'-9" OR 25'-0" UNSUPPORTED SPAN.
6. THE REQUIRED CLEAR AREA FREE OF FIXED OBJECTS IS 5' BEHIND A 12'-6" UNSUPPORTED SPAN.
7. WHERE THERE IS CURB, THE MAXIMUM CURB HEIGHT IS 2" FOR A MINIMUM LENGTH OF 18'-9" IN ADVANCE OF AND ON THE TRAILING END OF THE OMITTED POST.

12'-6" UNSUPPORTED SPAN

CD-609-8A.1

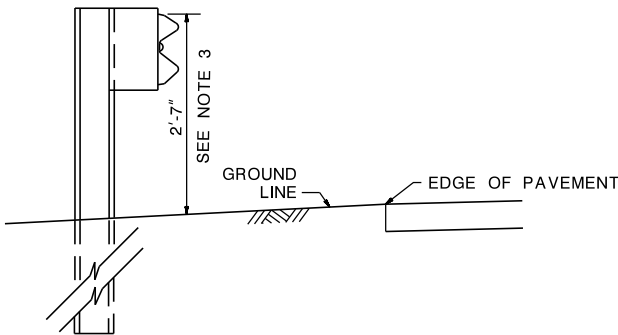
CD-609-8A.2



GUIDE RAIL FLUSH WITH GUTTER LINE
(SEE NOTE 4)

GUIDE RAIL OFFSET 4' OR GREATER FROM GUTTER LINE

RAIL HEIGHT DETERMINATION WITH CURB



RAIL HEIGHT DETERMINATION
WITHOUT CURB

RAIL HEIGHT DETERMINATION

NOTES:

1. WHERE GUIDERAIL ADJACENT TO CURB IS FLUSH WITH THE GUTTER LINE (6" OFFSET FOR SLOPING CURB) AND IS TAPERED TO AN OFFSET OF 4' OR GREATER, A VERTICAL TRANSITION IS REQUIRED. THE VERTICAL TRANSITION SHALL BE ACCOMPLISHED IN A MINIMUM LENGTH OF 12'-6" FOR EACH 2" OF VERTICAL CHANGE.
2. SEE PLANS FOR GUIDE RAIL OFFSET.
3. 2'-10" FOR MODIFIED THRIE BEAM GUIDE RAIL.
4. FOR SLOPING CURB, FACE OF RAIL IS OFFSET 6" FROM GUTTER LINE.

BEAM GUIDE RAIL
TREATMENTS
(MASH TL-3)

N.T.S.

CD-609-8A

NEW JERSEY DEPARTMENT OF TRANSPORTATION

CONSTRUCTION DETAILS

CD-609-8A.3