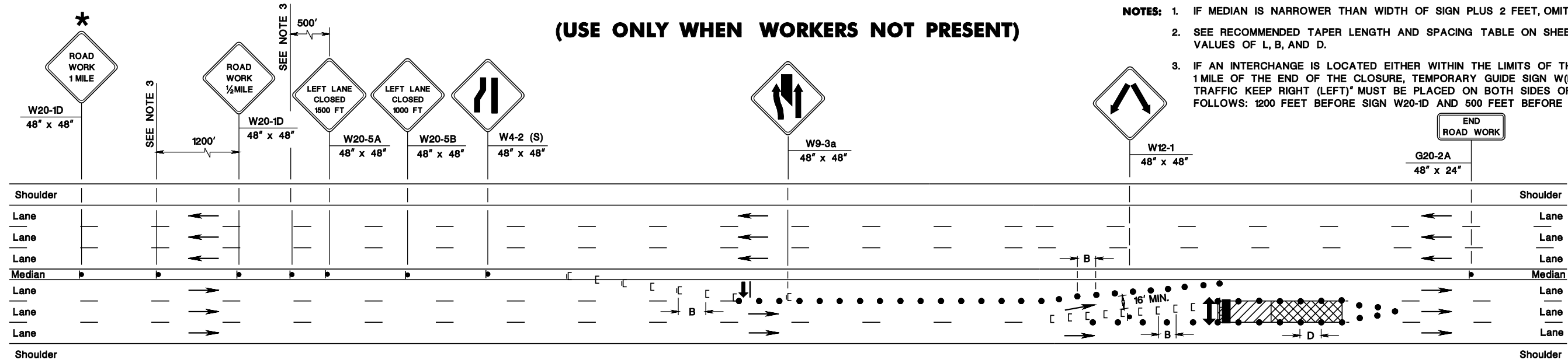


pen table=\\NDOT\RTW3\Projects\NDOT\TWS\Projects\NDOT\TWS\TBA\Roadway\Details\_13x17.tbl  
scale=63.073306:1.000000  
date=28-SEP-2016 14:24  
ID=TP2VLL  
file=

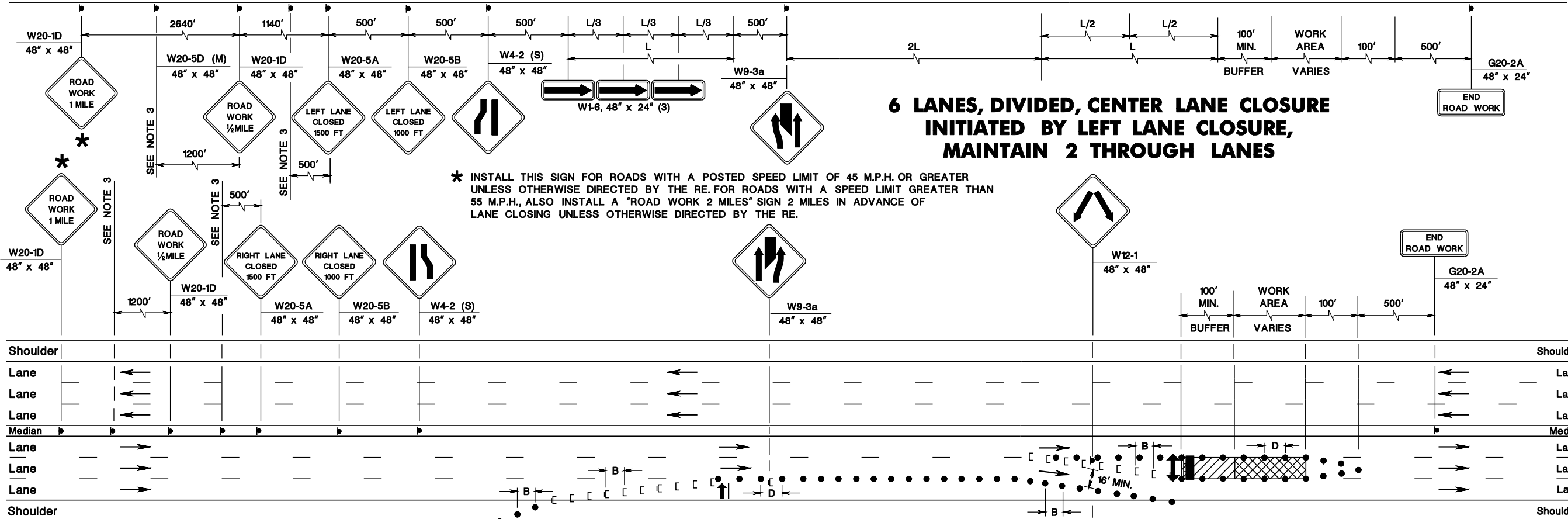
(USE ONLY WHEN WORKERS NOT PRESENT)

- NOTES:
- IF MEDIAN IS NARROWER THAN WIDTH OF SIGN PLUS 2 FEET, OMIT MEDIAN SIGNING.
  - SEE RECOMMENDED TAPER LENGTH AND SPACING TABLE ON SHEET TCD-2 FOR VALUES OF L, B, AND D.
  - IF AN INTERCHANGE IS LOCATED EITHER WITHIN THE LIMITS OF THE CLOSURE OR WITHIN 1 MILE OF THE END OF THE CLOSURE, TEMPORARY GUIDE SIGN W(NJ) 100-1(L), "ALL EXITING TRAFFIC KEEP RIGHT (LEFT)" MUST BE PLACED ON BOTH SIDES OF THE ROADWAY AS FOLLOWS: 1200 FEET BEFORE SIGN W20-1D AND 500 FEET BEFORE SIGN W20-5A.



6 LANES, DIVIDED, CENTER LANE CLOSURE  
INITIATED BY LEFT LANE CLOSURE,  
MAINTAIN 2 THROUGH LANES

\* INSTALL THIS SIGN FOR ROADS WITH A POSTED SPEED LIMIT OF 45 M.P.H. OR GREATER UNLESS OTHERWISE DIRECTED BY THE RE. FOR ROADS WITH A SPEED LIMIT GREATER THAN 55 M.P.H., ALSO INSTALL A "ROAD WORK 2 MILES" SIGN 2 MILES IN ADVANCE OF LANE CLOSING UNLESS OTHERWISE DIRECTED BY THE RE.



6 LANES, DIVIDED, CENTER LANE CLOSURE  
INITIATED BY RIGHT LANE CLOSURE,  
MAINTAIN 2 THROUGH LANES

(USE ONLY WHEN WORKERS NOT PRESENT)

NEW JERSEY DEPARTMENT OF TRANSPORTATION

TRAFFIC CONTROL DETAILS