

NEW JERSEY DEPARTMENT OF TRANSPORTATION STANDARD LEGEND

STATE FEDERAL PROJECT NO. N.J. I-IR-IG-295-2(93)61

Linear Features

Table with columns for Existing and PROPOSED linear features. Includes items like Water Main, Gas Main, Telephone Conduit, Electric Conduit, Cable TV, Fiber Optic, Intelligent Transportation System, Sanitary Sewers or Storm Drains, Pavements, Shoulders, Curbs, Slopes, Base Line, Right of Way Lines, Easements, Property Line, Fence, Beam Guide Rail, Noise Walls, Wetland Limit Line, Silt Fence, Ditches, Railroad Tracks, Tree Line, Mean High Water Line, and Tidelands Line.

Topographical Features

Table with columns for Existing and PROPOSED topographical features. Includes items like Inlets, Manholes, Reset, Reconstructed, Cast Iron Extension, New Manhole Casting, Headwalls, Headwalls & Aprons, Water Gate Valves, Reset Water Gate Valves, Gas Gate Valves, Reset Gas Gate Valves, Hydrants, Reset Hydrants, Utility Pole, Temporary Utility Pole, Traffic Signal, Junction Box, Fiber Optic Junction Box, Junction Box Foundation, Signs, Vertical Panels, Camera, Dynamic Message Sign, Guide Rail End Terminals, Beam Guide Rail Anchorages, Monuments, and ROW Monument.

Topographical Features

Table with columns for Existing and PROPOSED topographical features. Includes items like Test Pit, Borings, Deciduous Tree, Evergreen Tree, Shrub, Hedge, and Wetland.

Miscellaneous Symbols

Table of miscellaneous symbols including items with no alternate, alternate items, milling, building to be demolished, removal of concrete base course, building to be removed and paid for, demolition no. & parcel no., high point, low point, and bench mark.

Double Reference Codes

Table of double reference codes: EDQR ESTIMATE AND DISTRIBUTION OF QUANTITIES - ROADWAY, TS TYPICAL SECTIONS, PSI PLAN SHEET INDEX, CL CONSTRUCTION LEGEND, C CONSTRUCTION PLANS, EP ENVIRONMENTAL PLANS, SOIL EROSION & SEDIMENT CONTROL PLANS, D DRAINAGE PLANS, DTL CONSTRUCTION DETAILS, P PROFILES, T TIES, G GRADES, TC TRAFFIC CONTROL AND STAGING PLANS, TSP TRAFFIC SIGNAL PLANS, E ELECTRICAL PLANS, HL HIGHWAY LIGHTING PLANS, ITS INTELLIGENT TRANSPORTATION SYSTEM PLANS, U UTILITY PLANS, SL SIGN LOCATION PLANS, TSS TRAFFIC SIGNING AND STRIPING PLANS, STD SIGN TEXT DETAILS, L LANDSCAPE PLANS, MS METHOD OF CROSS SECTIONS, X CROSS SECTIONS, EQB ESTIMATE OF QUANTITIES - BRIDGE, B BRIDGE PLANS.

ABBREVIATIONS USED IN THIS CONTRACT

Large table of abbreviations used in the contract, organized in four columns. Includes terms like AHEAD, BACK, BASELINE, BENCH MARK, BELL TELEPHONE, BITUMINOUS, BUILDING, CENTERLINE, CAST IRON PIPE, DUCTILE IRON PIPE, CONCRETE VERTICAL CURB, CONCRETE, CULVERT, DIAMETER, DROP CURB, DITCH EXCAVATION, DEPRESSED CURB, DRILL HOLE, DRIVEWAY, EASTBOUND, WESTBOUND, NORTHBOUND, SOUTHBOUND, ELEVATION, EXISTING, GRATE, HEIGHT, HEADWALL, HYDRANT, INVERT, IRON PIN, JUNCTION BOX, LEFT, RIGHT, LIMIT OF PAVEMENT, LIMIT OF MILLING, MAILBOX, MILE POST, MAXIMUM, MINIMUM, NUMBER, NOT TO SCALE, PAVEMENT, PERFORATED, PROFILE GRADE LINE, PROPERTY LINE, PARKER KAYLON MASONRY NAIL, POINT ON CURVE, POINT ON LINE, POINT ON TANGENT, POINT OF REVERSE CURVE, PROPOSED, POINT OF TANGENCY, POLYVINYL CHLORIDE PIPE, POINT OF VERTICAL CURVATURE, POINT OF VERTICAL INTERSECTION, POINT OF VERTICAL TANGENCY, PAVEMENT RADIUS, RCCP, R.C.C.P., RCP, R.C.P., RMC, R.M.C., RNMC, R.N.M.C., ROW, R.O.W., R.R., RTE., RT., SAN., SDWK., S.H.D., SHOULDER, SURVEY LINE, SUBBASE OUTLET DRAIN, STORY, TANGENT, TO BE ABANDONED, TO BE REMOVED, TELEPHONE, TEMPORARY, THICK, TYPICAL, UNDERDRAIN, UTILITY POLE, VARIABLE, VARIES, WATER METER.

ELECTRICAL PLAN ABBREVIATIONS

Table of electrical plan abbreviations: CF CUTOFF LUMINAIRE, TYPE, E EXPRESSWAY LUMINAIRE, ID IMAGE DETECTOR, IDC IMAGE DETECTOR CABLE, JBF JUNCTION BOX FOUNDATION, L LUMINAIRE, LMA-A LIGHTING MAST ARM, ALUMINUM, LMA-S LIGHTING MAST ARM, STEEL, LSA LIGHTING STANDARD, ALUMINUM, LSF LIGHTING STANDARD, FIBERGLASS, LSS LIGHTING STANDARD, STEEL, MAS MAST ARM SIGN, MSC II MEDIUM SEMI-CUTOFF LUMINAIRE, TYPE 2, MSC III MEDIUM SEMI-CUTOFF LUMINAIRE, TYPE 3, PB PUSH BUTTON, PSH PEDESTRIAN SIGNAL HEAD, PSS PEDESTRIAN SIGNAL STANDARD, TSH TRAFFIC SIGNAL HEAD, TSMA-A TRAFFIC SIGNAL MAST ARM, ALUMINUM, TSMA-S TRAFFIC SIGNAL MAST ARM, STEEL, TSS-C TRAFFIC SIGNAL STANDARD, ALUMINUM "C", TSS-K TRAFFIC SIGNAL STANDARD, ALUMINUM "K", TSS-S TRAFFIC SIGNAL STANDARD, STEEL, TSS-SC TRAFFIC SIGNAL STANDARD, STEEL COMBINATION, TSS-T TRAFFIC SIGNAL STANDARD, ALUMINUM "T", UL-P UNDERDECK LIGHTING, TYPE "P", UL-W UNDERDECK LIGHTING, TYPE "W", V VERTICAL LUMINAIRE.



N.T.S. CL-1 CL-1

NEW JERSEY DEPARTMENT OF TRANSPORTATION

CONSTRUCTION LEGEND ROUTE 295 CONTRACT NO. 010010001

Individual, Firm, Partnership, etc. (signature) (date) John L. Doe N.J.P.E. LIC. NO. 99999

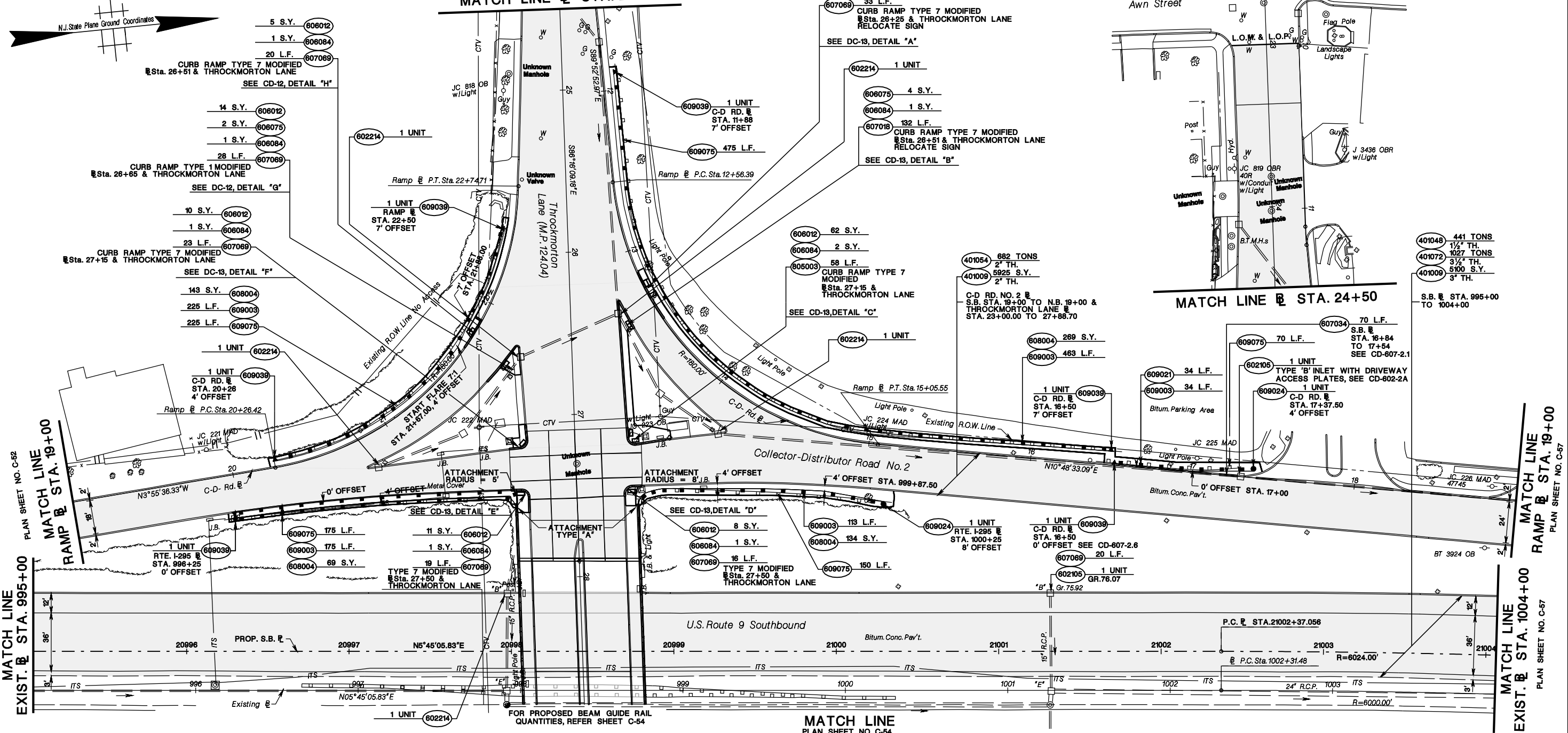
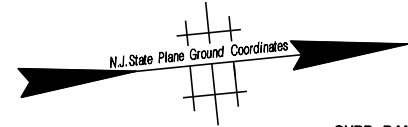
pen table= \\NDOT\RF\MS\... date=01-FEB-2019 09:48

pen table= \\NDOT\ITR\WIS\Bgsystem\NDOT\WIS\Projects\NDOT\TBS\TBLA\Roadway\half-dor-sample.TBL
 scale= 63.073308:1.000000
 date= 01-FEB-2019 09:48
 D= TFXSBCX

STATE	FEDERAL PROJECT NO.
N.J.	NHS-0001(263)

COUNTY OF MIDDLESEX

TOWNSHIP OF OLD BRIDGE



STD. ITEM NO.	TO BE CONSTRUCTED	CONTRACT QUANTITY
401009P	HMA MILLING, 3" OR LESS	11025 SY
401048M	HOT MIX ASPHALT 9.5 M 76 SURFACE COURSE	441 T
401054M	HOT MIX ASPHALT 12.5 M 64 SURFACE COURSE	682 T
401072M	HOT MIX ASPHALT 12.5 M 64 INTERMEDIATE COURSE	1027 T
602105M	SET INLET TYPE B, CASTING	2 U
602214M	INLET FACE PLATE	5 U
606012P	CONCRETE SIDEWALK, 4" THICK	118 SY
606075P	CONCRETE ISLAND, 4" THICK	6 SY
606084P	DETECTABLE WARNING SURFACE	9 SY
607018P	9" X 16" CONCRETE VERTICAL CURB	132 LF
607034P	9" X 14" CONCRETE VERTICAL CURB	70 LF
607069P	9" X VARIABLE HEIGHT CONCRETE VERTICAL CURB	159 LF
608004P	NON-VEGETATIVE SURFACE, POROUS HOT MIX ASPHALT, 4" THICK	615 SY
609003M	BEAM GUIDE RAIL	1010 LF
609021M	RUB RAIL	34 LF
609024M	FLARED GUIDE RAIL TERMINAL	2 U
609039M	BEAM GUIDE RAIL ANCHORAGE	6 U
609075M	REMOVAL OF BEAM GUIDE RAIL	1095 LF
805003M	TURF REPAIR STRIP	58 LF

★ REFER BRIDGE PLANS FOR PAY ITEMS OVER STRUCTURE.

NEW JERSEY DEPARTMENT OF TRANSPORTATION

CONSTRUCTION PLANS

U.S. ROUTE 9

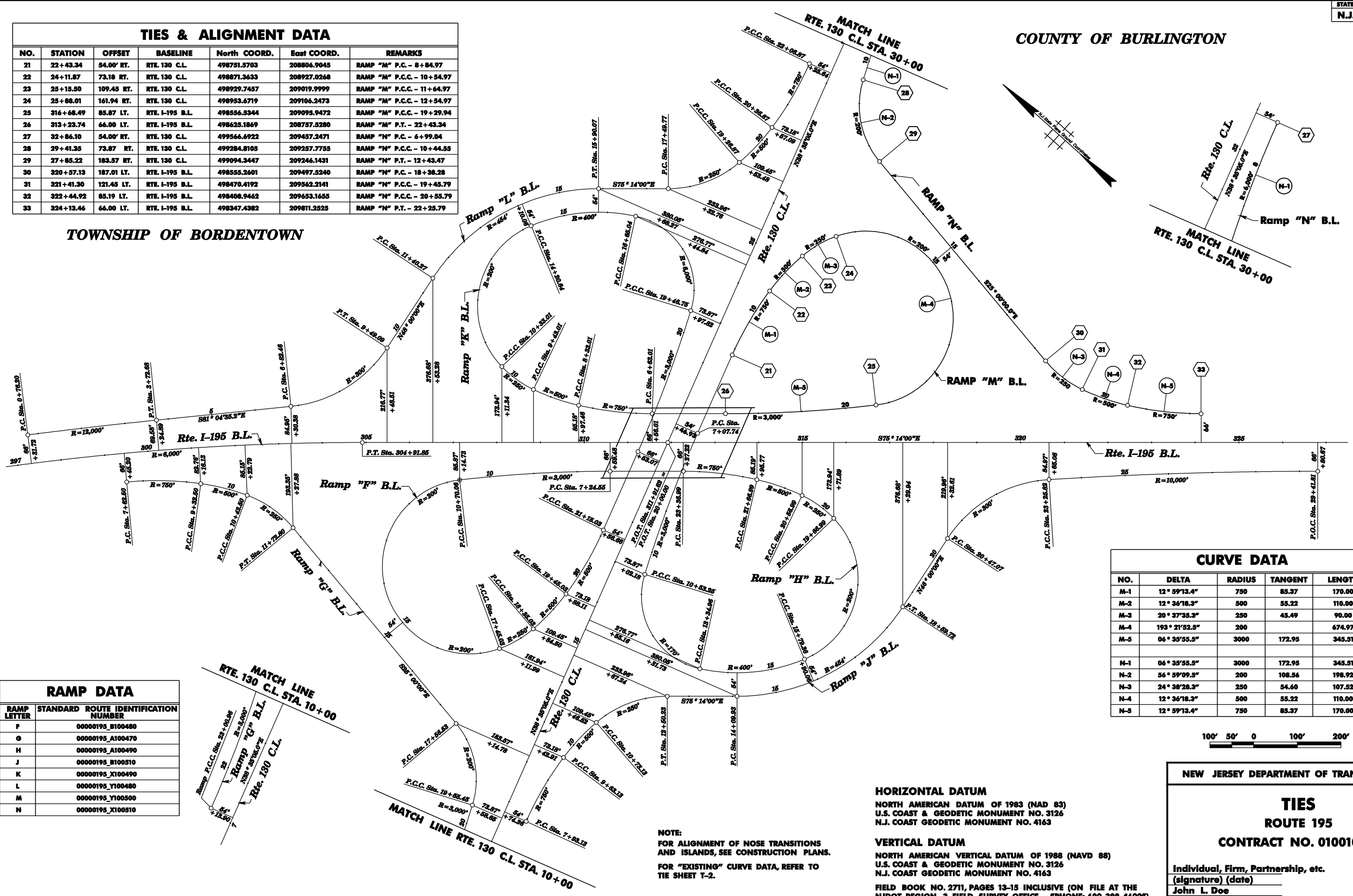
CONTRACT NO. 116093070

TIES & ALIGNMENT DATA

NO.	STATION	OFFSET	BASELINE	North COORD.	East COORD.	REMARKS
21	22+43.34	54.00' RT.	RTE. 130 C.L.	498751.5703	208806.9045	RAMP "M" P.C. - 8+84.97
22	24+11.87	73.18 RT.	RTE. 130 C.L.	498871.3633	208927.0268	RAMP "M" P.C.C. - 10+54.97
23	25+15.50	109.45 RT.	RTE. 130 C.L.	498929.7457	209019.9999	RAMP "M" P.C.C. - 11+64.97
24	25+88.01	161.94 RT.	RTE. 130 C.L.	498953.6719	209106.2473	RAMP "M" P.C.C. - 12+54.97
25	316+68.49	85.87 LT.	RTE. I-195 B.L.	498556.5344	209095.9472	RAMP "M" P.C.C. - 19+29.94
26	313+23.74	66.00 LT.	RTE. I-195 B.L.	498625.1869	208757.5280	RAMP "M" P.T. - 22+43.34
27	32+86.10	54.00' RT.	RTE. 130 C.L.	499566.6922	209457.2471	RAMP "N" P.C. - 6+99.04
28	29+41.35	73.87 RT.	RTE. 130 C.L.	499284.8105	209257.7755	RAMP "N" P.C.C. - 10+44.55
29	27+85.22	183.57 RT.	RTE. 130 C.L.	499094.3447	209246.1431	RAMP "N" P.T. - 12+43.47
30	320+57.13	187.01 LT.	RTE. I-195 B.L.	498555.2601	209497.5240	RAMP "N" P.C. - 18+38.28
31	321+41.30	121.45 LT.	RTE. I-195 B.L.	498470.4192	209562.2141	RAMP "N" P.C.C. - 19+45.79
32	322+44.92	85.19 LT.	RTE. I-195 B.L.	498408.9462	209653.1655	RAMP "N" P.C.C. - 20+55.79
33	324+13.46	66.00 LT.	RTE. I-195 B.L.	498347.4382	209811.2525	RAMP "N" P.T. - 22+25.79

COUNTY OF BURLINGTON

TOWNSHIP OF BORDENTOWN



CURVE DATA

NO.	DELTA	RADIUS	TANGENT	LENGTH
M-1	12° 59'13.4"	750	85.37	170.00
M-2	12° 36'18.3"	500	55.22	110.00
M-3	20° 37'35.3"	250	45.49	90.00
M-4	193° 21'52.5"	200	172.95	345.51
M-5	06° 35'55.5"	3000	172.95	345.51
N-1	06° 35'55.5"	3000	172.95	345.51
N-2	56° 59'09.5"	200	108.56	198.92
N-3	24° 38'28.3"	250	54.60	107.52
N-4	12° 36'18.3"	500	55.22	110.00
N-5	12° 59'13.4"	750	85.37	170.00

RAMP DATA

RAMP LETTER	STANDARD ROUTE IDENTIFICATION NUMBER
F	00000195_B100480
G	00000195_A100470
H	00000195_A100490
J	00000195_B100510
K	00000195_X100490
L	00000195_Y100480
M	00000195_Y100500
N	00000195_X100510

NOTE:
FOR ALIGNMENT OF NOSE TRANSITIONS AND ISLANDS, SEE CONSTRUCTION PLANS.
FOR "EXISTING" CURVE DATA, REFER TO TIE SHEET T-2.

HORIZONTAL DATUM
NORTH AMERICAN DATUM OF 1983 (NAD 83)
U.S. COAST & GEODETIC MONUMENT NO. 3126
N.J. COAST GEODETIC MONUMENT NO. 4163

VERTICAL DATUM
NORTH AMERICAN VERTICAL DATUM OF 1988 (NAVD 88)
U.S. COAST & GEODETIC MONUMENT NO. 3126
N.J. COAST GEODETIC MONUMENT NO. 4163

FIELD BOOK NO. 2711, PAGES 13-15 INCLUSIVE (ON FILE AT THE NJDOT REGION 3 FIELD SURVEY OFFICE - "PHONE: 609-388-4692")

NEW JERSEY DEPARTMENT OF TRANSPORTATION

TIES

ROUTE 195

CONTRACT NO. 010010001

Individual, Firm, Partnership, etc.
 (signature) (date)
 John L. Doe
 N.J.P.E. LIC. NO. 99999



T-1
T-3

pen table=\\NDOT\FRMS\MapSystem\NDOT\GIS\Projects\NDOT\Eng\Tie\Tie\Roadway\half-dot-sample.tbl
 scale=63.544278:1:000000
 date=01-FEB-2019 09:48
 ID=TPX3BCK

ALIGNMENT DATA

NO.	STATION	OFFSET	BASELINE	North COORD.	East COORD.	REMARKS
J-1	7+93.13	0'	RAMP J	497,837.8012	208,077.8411	P.C.
J-2	9+63.13	0'	"	497,957.5922	208,197.9617	P.C.C.
J-3	10+73.13	0'	"	498,015.9683	208,290.9371	P.C.C.
J-4	12+50.23	0'	"	498,032.6733	208,463.5514	P.T.
J-5	14+09.93	0'	"	497,991.9710	208,617.9741	P.C.
J-6	18+59.73	0'	"	498,093.5802	209,037.4727	P.T.
J-7	20+47.07	0'	"	498,218.9485	209,176.6911	P.C.
J-8	23+25.82	0'	"	498,290.2473	209,435.8912	P.C.C.
J-9	29+41.81	0'	RAMP J	498,151.6831	210,035.9911	P.T.
J-10	11+63.24	64' RT.	RAMP Y.R.	497,901.0455	208,141.0921	P.C.
J-11	9+61.18	0'	RAMP J	497,956.3882	208,196.4401	P.C.C.
J-12	10+06.30	27' LT.	"	498,005.4439	208,218.0012	CTR. NOSE
J-13	10+59.67	22' LT.	RAMP J	498,029.4817	208,268.7816	P.C.
J-14	14+26.90	54' RT.	RAMP Y.R.	498,113.3773	208,297.7113	P.T.
J-15	22+16.16	22' LT.	RAMP J	498,313.3926	209,323.1422	P.C.C.
J-16	23+03.59	18.11' LT.	"	498,311.7412	209,416.1521	P.C.C.
J-17	23+25.82	18' LT.	"	498,307.9076	209,439.4051	CTR. NOSE
J-18	25+95.62	14' LT.	"	498,247.7655	209,702.8711	CTR. NOSE
J-19	23+59.01	10' RT.	"	498,273.9283	209,466.4412	P.R.C.
J-20	23+42.46	5.01' RT.	RAMP J	498,282.0763	209,451.2213	P.R.C.
A-1	9+61.00	0'	ACCESS RD. I	497,091.8573	207,413.6131	P.O.T.
A-2	10+36.00	0'	"	497,138.6362	207,354.9811	P.C.
A-3	11+14.54	0'	"	497,208.9086	207,347.0816	P.T.
A-4	16+37.00	0'	ACCESS RD. I	497,617.3077	207,672.9251	P.O.T.
A-5	0+27.11	43.01 LT.	RAMP Y.R.	497,079.6883	207,348.8719	P.C.C.
A-6	10+33.11	19.97 LT.	ACCESS RD. I	497,121.2272	207,344.7918	P.R.C.
A-7	11+14.54	15.00 LT.	ACCESS RD. I	497,218.2546	207,335.3615	P.T.
A-8	1+65.38	45.06 LT.	RAMP Y.R.	497,189.0445	207,433.5151	P.C.C.
A-9	1+18.43	51.25 LT.	RAMP Y.R.	497,156.2099	207,399.3919	P.C.C.
A-10	11+14.54	15.00 RT.	ACCESS RD. I	497,199.5482	207,358.8118	P.T.
ML-1	269+31.90	0'	B.L. RTE. 195	498,636.8467	204,430.9811	P.C.
ML-2	304+91.85	0'	"	498,773.3984	207,936.2814	P.T.
ML-3	367+64.56	0'	"	497,174.5944	214,001.8151	P.C.
ML-4	381+23.98	0'	"	496,739.9585	215,288.7713	P.T.
ML-5	415+52.99	0'	"	495,424.6530	218,455.4931	P.C.
ML-6	430+61.24	0'	"	494,953.1503	219,886.6510	P.T.
ML-7	461+27.31	0'	"	494,215.8176	222,862.7512	P.C.
ML-8	475+15.82	0'	"	493,766.9904	224,174.8615	P.T.
ML-9	504+05.93	0'	B.L. RTE. 195	492,598.0199	226,818.0001	P.O.T.

CURVE DATA

NO.	DELTA	RADIUS	TANGENT	LENGTH
J-A	12° 59'13.4"	750'	85.37	170.00
J-B	12° 36'18.3"	500'	55.22	110.00
J-C	40° 35'23.3"	250'	92.45	177.11
J-D	56° 46'00.0"	454'	245.31	449.81
J-E	53° 50'14.4"	300'	150.35	278.75
J-F	3° 31'45.6"	10,000'	308.09	615.98
J-G	12° 50'18.8"	350'	39.38	78.43
J-H	2° 33'48.3"	3,000'	67.12	134.22
J-I	21° 26'40.3"	250'	47.34	93.57
J-J	1° 40'59.9"	10,000'	146.91	293.79
J-K	33° 39'09.0"	30'	9.07	17.62
J-L	33° 27'44.5"	30'	9.02	17.52
AR-A	90° 00'00.0"	50'	50.00	78.54
AR-B	88° 16'24.1"	70'	67.92	107.85
AR-C	88° 08'50.7"	30'	29.05	46.15
AR-D	163° 24'21.6"	30'	205.72	85.56
AR-E	18° 09'47.3"	150'	23.98	47.55
ML-A	33° 59'42.0"	6,000'	1,834.10	3,559.95'
ML-B	7° 47'20.0"	10,000'	680.76	1,359.42
ML-C	8° 38'30.0"	10,000'	755.56	1,508.26
ML-D	9° 56'40.0"	8,000'	696.00	1,388.51

SURVEY BASELINE DATA

NO.	North COORD.	East COORD.	REMARKS
TR-A	493,919.454	223,889.690	2"x2"x18" Hub
TR-B	494,055.347	223,252.052	IP - #5 Rebar (36")
TR-C	494,319.892	222,919.641	2"x2"x18" Hub
TR-D	494,139.989	222,189.984	D.H. (S.W. Corner Step)
TR-E	494,805.554	220,502.930	PK w/Ribbon
TR-F	495,584.560	218,347.601	PK w/Ribbon
TR-G	495,864.561	217,767.792	2"x2"x18" Hub
TR-H	496,160.553	217,157.175	IP - #5 Rebar (36")
TR-K	496,391.688	216,561.661	PK w/Ribbon
TR-L	496,664.295	216,032.945	DH Sdwk.
TR-M	496,834.526	215,602.300	DH Curb
TR-N	497,031.642	215,202.612	2"x2"x18" Hub
TR-O	497,235.056	213,977.108	PK w/Ribbon
TR-P	497,310.665	213,521.615	PK w/Ribbon
TR-Q	497,689.779	212,015.452	2"x2"x18" Hub
TR-R	497,984.782	210,893.275	2"x2"x18" Hub
TR-S	498,131.948	210,226.160	2"x2"x18" Hub
TR-T	498,307.678	209,691.814	DH Curb
TR-U	498,614.004	208,535.355	DH Sdwk.
TR-V	498,605.107	208,568.959	2"x2"x18" Hub
TR-W	498,931.933	207,750.851	2"x2"x18" Hub
TR-X	498,876.158	207,346.677	2"x2"x18" Hub
M-1	493,628.028	220,694.244	USC&G Mon. #8140
M-2	494,853.604	220,505.588	USC&G Mon. #8141
M-3	499,480.510	209,264.223	USC&G Mon. #2156

pen table=\\NDOT\FRW\Projects\NDOT\Eng\pilot\TBL\Roadway\half-dot-sample.TBL

scale=63.5442761000000

date=01-FEB-2019 09:48

ID=TPX3BCK

ENCLOSURE - CORRECTED EAST COORD. REMOVED CURVE DATA COORD.
ENCLOSURE - ORIGINAL SHEET

file=

T-2
T-3

NEW JERSEY DEPARTMENT OF TRANSPORTATION

TIES
ROUTE 195
CONTRACT NO. 010010001

Individual, Firm, Partnership, etc.
(signature) (date)
John L. Doe
N.J.P.E. LIC. NO. 99999

28

BOROUGH OF PARAMUS

COUNTY OF BERGEN

CURVE DATA

NO.	DELTA	RADIUS	TANGENT	LENGTH
M-4	10° 29' 7.5"	5728'	524.76'	1046.59'
M-5	15° 36' 41.5"	3277'	449.24'	892.92'

TRANSVERSE ALIGNMENT DATA

No.	Station	Offset	Baseline	North Coord.	East Coord.	Remarks
S-11	261+76.88	44.96' Lt.	Rte. 4	787,639.1676	272,330.9933	Traverse Point
S-12	265+62.38	100.21' Lt.	Rte. 4	787,488.3475	272,693.6953	Traverse Point
S-13	270+66.51	44.99' Rt.	Rte. 4	787,026.3409	272,982.6378	Traverse Point
S-14	276+75.87	47.72' Lt.	Rte. 4	786,875.9858	273,476.8109	Traverse Point

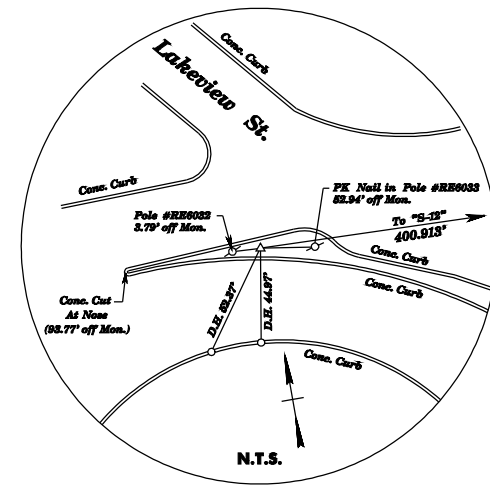
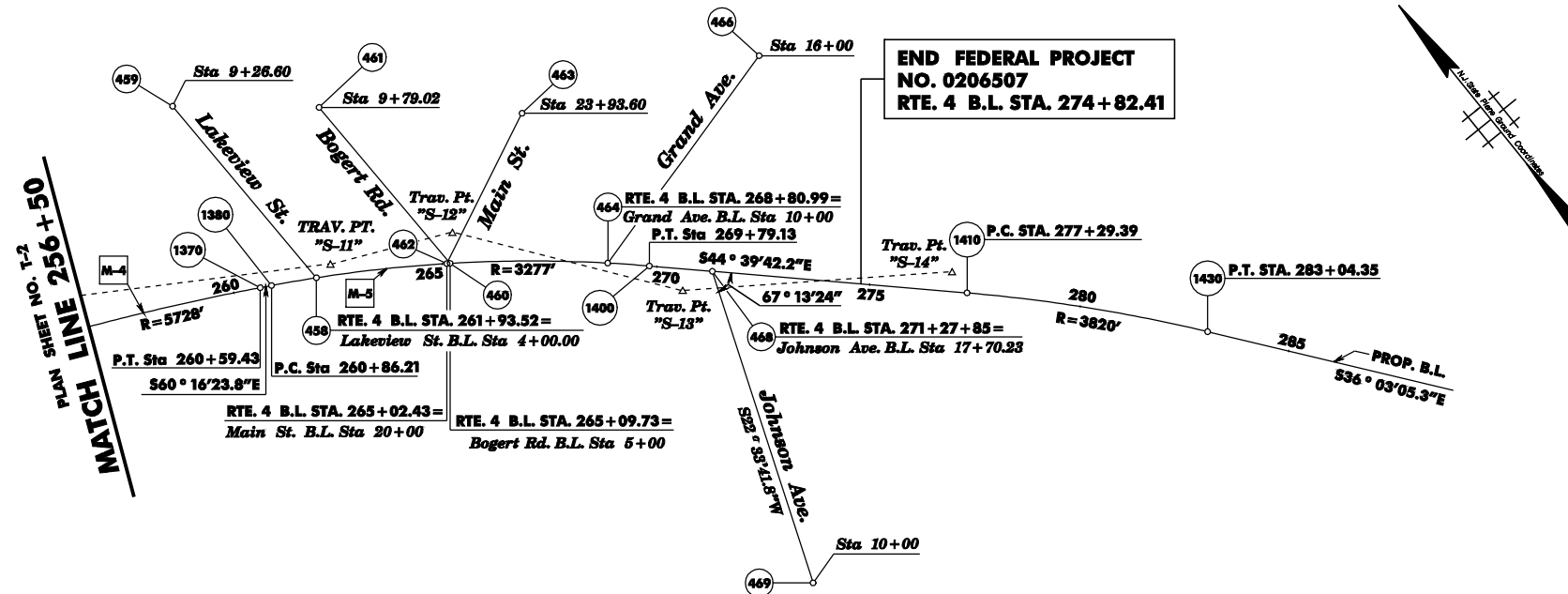
HORIZONTAL DATUM

NORTH AMERICAN DATUM OF 1983 (NAD 83)
U.S. COAST & GEODETIC MONUMENT NO. 3126
N.J. GEODETIC MONUMENT NO. 4163

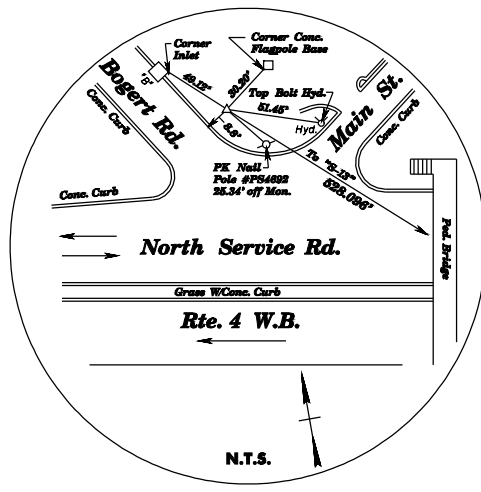
VERTICAL DATUM

NORTH AMERICAN VERTICAL DATUM OF 1988 (NAVD 88)
U.S. COAST & GEODETIC MONUMENT NO. 3126
N.J. GEODETIC MONUMENT NO. 4163

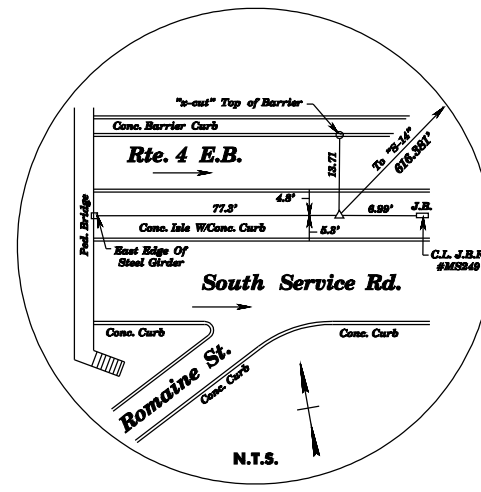
FIELD BOOK NO. 2711, PAGES 13-15 INCLUSIVE (ON FILE AT THE
NJDOT AREA "B" FIELD SURVEY OFFICE - PHONE: 001-388-4692")



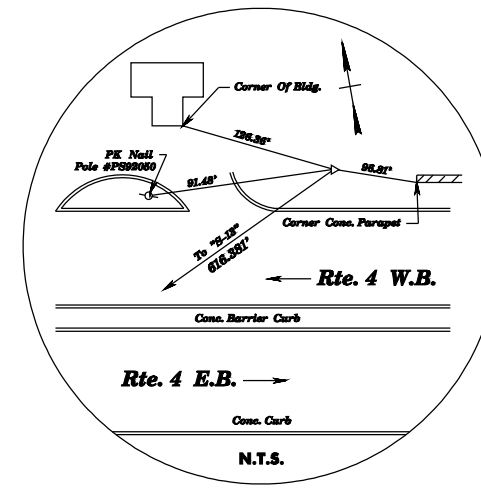
Trav. Pt. "S-11"
Mon. Plug W/Punch (Mon. Box)
Sta. 261+76.88, 44.96' Lt.



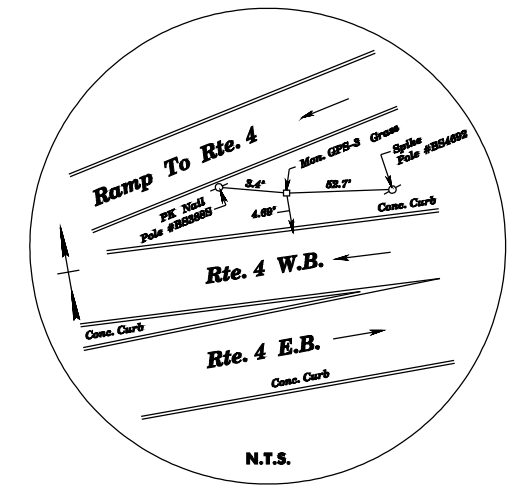
Trav. Pt. "S-12"
Conc. Mon. W/Drill Hole
Sta. 265+62.38, 100.21' Lt.



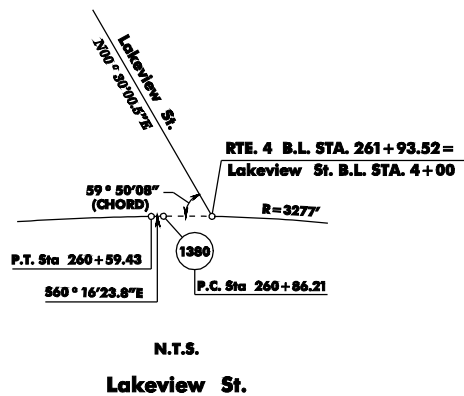
Trav. Pt. "S-13"
Mon. Plug W/Punch (Mon. Box)
Sta. 270+66.51, 44.99' Rt.



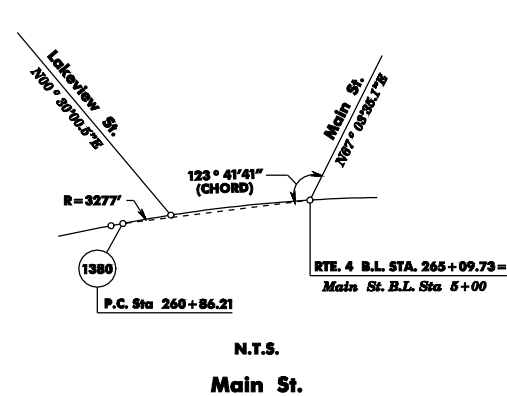
Trav. Pt. "S-14"
"x" Steel Angle Iron (3" Above Ground)
Sta. 276+75.87, 47.72' Lt.



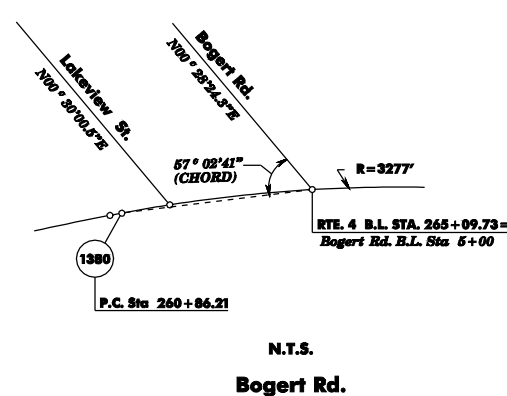
G.P.S. Monument #3, Elev. 73.964
Sta. 281+74.61, 44.96' Lt.



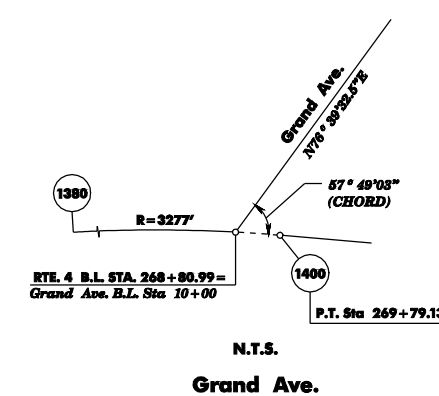
N.T.S.
Lakeview St.



N.T.S.
Main St.



N.T.S.
Bogert Rd.



N.T.S.
Grand Ave.



NEW JERSEY DEPARTMENT OF TRANSPORTATION

TIES
ROUTE 4
CONTRACT NO. 010010001

Individual, Firm, Partnership, etc.
(signature) (date)
John L. Doe
N.J.P.E. LIC. NO. 99999