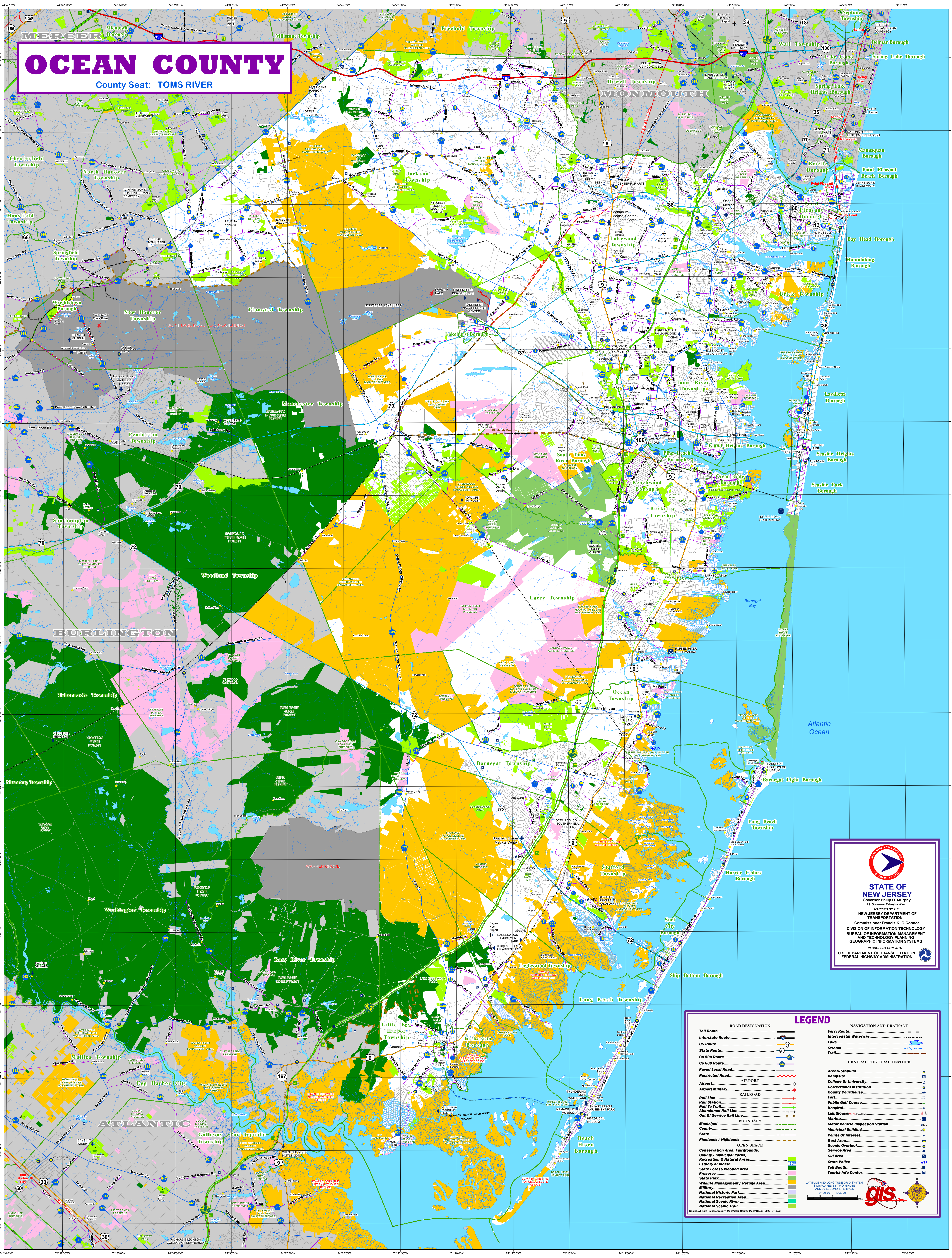
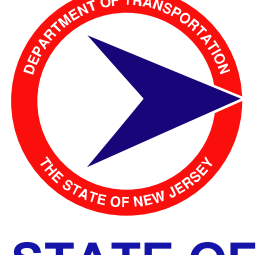


OCEAN COUNTY

County Seat: TOMS RIVER




STATE OF NEW JERSEY
Governor Philip D. Murphy
Lt. Governor Tashia Way
MAJORIS BY THE
NEW JERSEY DEPARTMENT OF TRANSPORTATION
Commissioner Francis K. O'Connor
DIVISION OF INFORMATION TECHNOLOGY
BUREAU OF INFORMATION MANAGEMENT
AND TECHNOLOGY PLANNING
GEOGRAPHIC INFORMATION SYSTEMS
IN COOPERATION WITH
U.S. DEPARTMENT OF TRANSPORTATION
FEDERAL HIGHWAY ADMINISTRATION

LEGEND

ROAD DESIGNATION	NAVIGATION AND DRAINAGE
Toll Route	Ferry Route
Interstate Route	Intercoastal Waterway
US Route	Lake
State Route	Stream
Co 500 Route	Trail
Co 600 Route	
Paired Local Road	
Restricted Road	
Airports	AIRPORT
Airport Military	
Rail Line	RAILROAD
Rail Station	
Rail To Trail	
Abandoned Rail Line	
Out Of Service Rail Line	
Municipal	BOUNDARY
County	
Pinelands / Highlands	
OPEN SPACE	
Conservation Area, Fairgrounds, Recreation & Natural Areas	
Estuary or Marsh	
State Forest / Wooded Area	
Preserve	
State Park	
White Management / Refugio Area	
Military	
National Historic Park	
National Recreation Area	
National Scenic River	
National Scenic Trail	

GENERAL CULTURAL FEATURE
Arena / Stadium
Campus
College Or University
Correctional Institution
County Courthouse
Fort
Public Golf Course
Hospital
Lighthouse
Museum
Motor Vehicle Inspection Station
Municipal Building
Points Of Interest
Rest Area
Scenic Overlook
Service Area
Ski Area
State Police
Toll Booth
Tourist Info Center

LATITUDE AND LONGITUDE GRID SYSTEM
IS DISPLAYED BY TWO MINUTE
AND 30 SECOND INTERVALS
18 07 07 49 30 30

