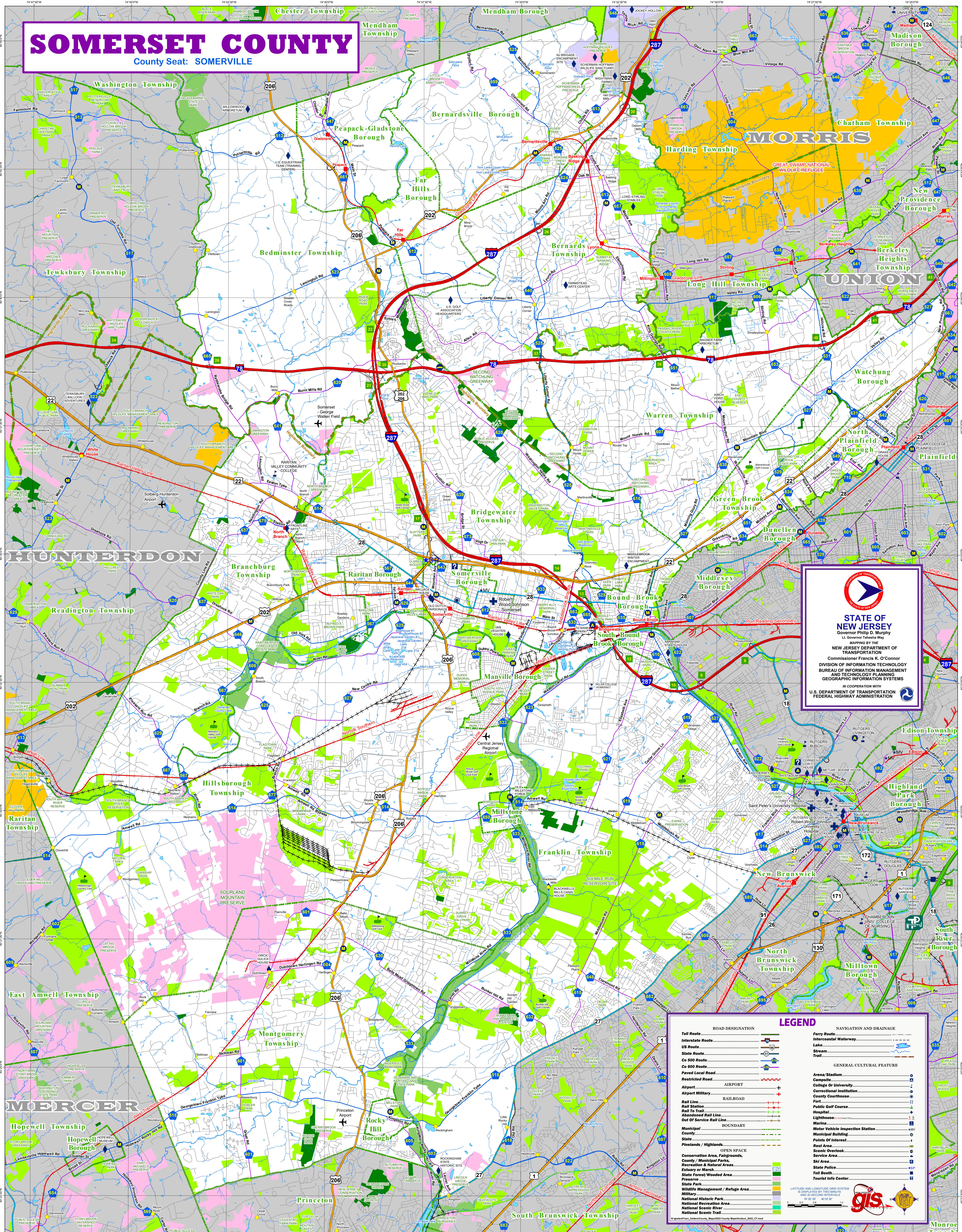
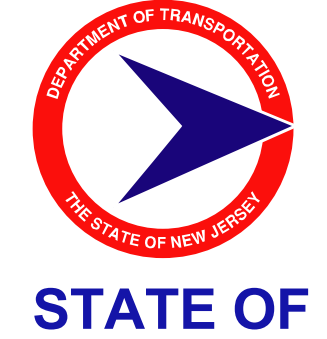


SOMERSET COUNTY

County Seat: SOMERVILLE




STATE OF NEW JERSEY
 Governor Philip D. Murphy
 Lt. Governor Tashia Way
 MAPPING BY THE
 NEW JERSEY DEPARTMENT OF
 TRANSPORTATION
 Commissioner Francis K. O'Connor
 DIVISION OF INFORMATION TECHNOLOGY
 BUREAU OF INFORMATION MANAGEMENT
 AND TECHNOLOGY PLANNING
 GEOGRAPHIC INFORMATION SYSTEMS
 IN COOPERATION WITH
 U.S. DEPARTMENT OF TRANSPORTATION
 FEDERAL HIGHWAY ADMINISTRATION

LEGEND

ROAD DESIGNATION		NAVIGATION AND DRAINAGE	
Toll Route		Ferry Route	
Interstate Route		Intercoastal Waterway	
US Route		Lake	
State Route		Trail	
Co 500 Route		GENERAL CULTURAL FEATURE	
Co 600 Route		Area/Stadium	
Restricted Road		Campus	
Airport		College Or University	
Airport Military		Correctional Institution	
Rail Line		County Courthouse	
Rail To Trail		Fort	
Out of Service Rail Line		Public Golf Course	
Municipal BOUNDARY		Hospital	
County BOUNDARY		Lighthouse	
State BOUNDARY		Motor Vehicle Inspection Station	
Pinelands / Highlands		Municipal Building	
Conservation Area, Fairgrounds, County / Municipal Parks, Recreation & Natural Areas, Estuary or Marsh, State Forest/Wooded Area, State Park		Points of Interest	
Wildlife Management / Refuge Area		Rest Area	
National Historic Park		Scenic Overlook	
National Recreation Area		Service Area	
National Scenic River		Ski Area	
National Scenic Trail		State Police	
		Toll Booth	
		Traffic Info Center	

LATTITUDE AND LONGITUDE GRID SYSTEM IS DISPLAYED BY TENS OF MINUTES AND 30 SECOND INTERVALS
 40° 00' 00" N 74° 30' 00" W


 gis