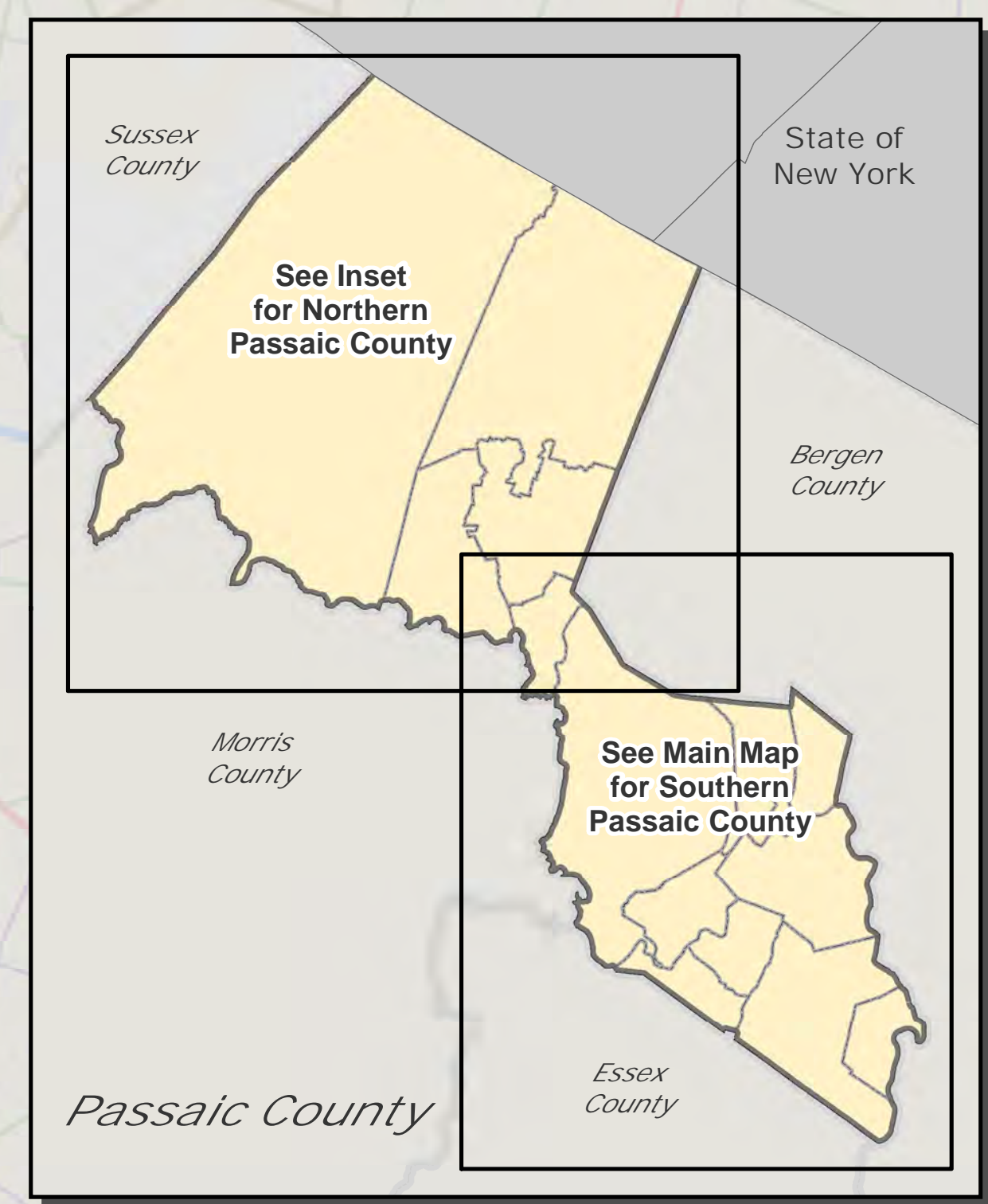
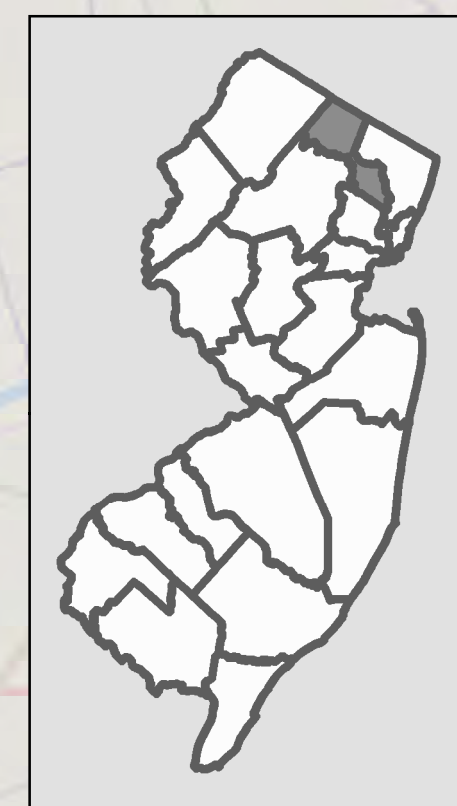
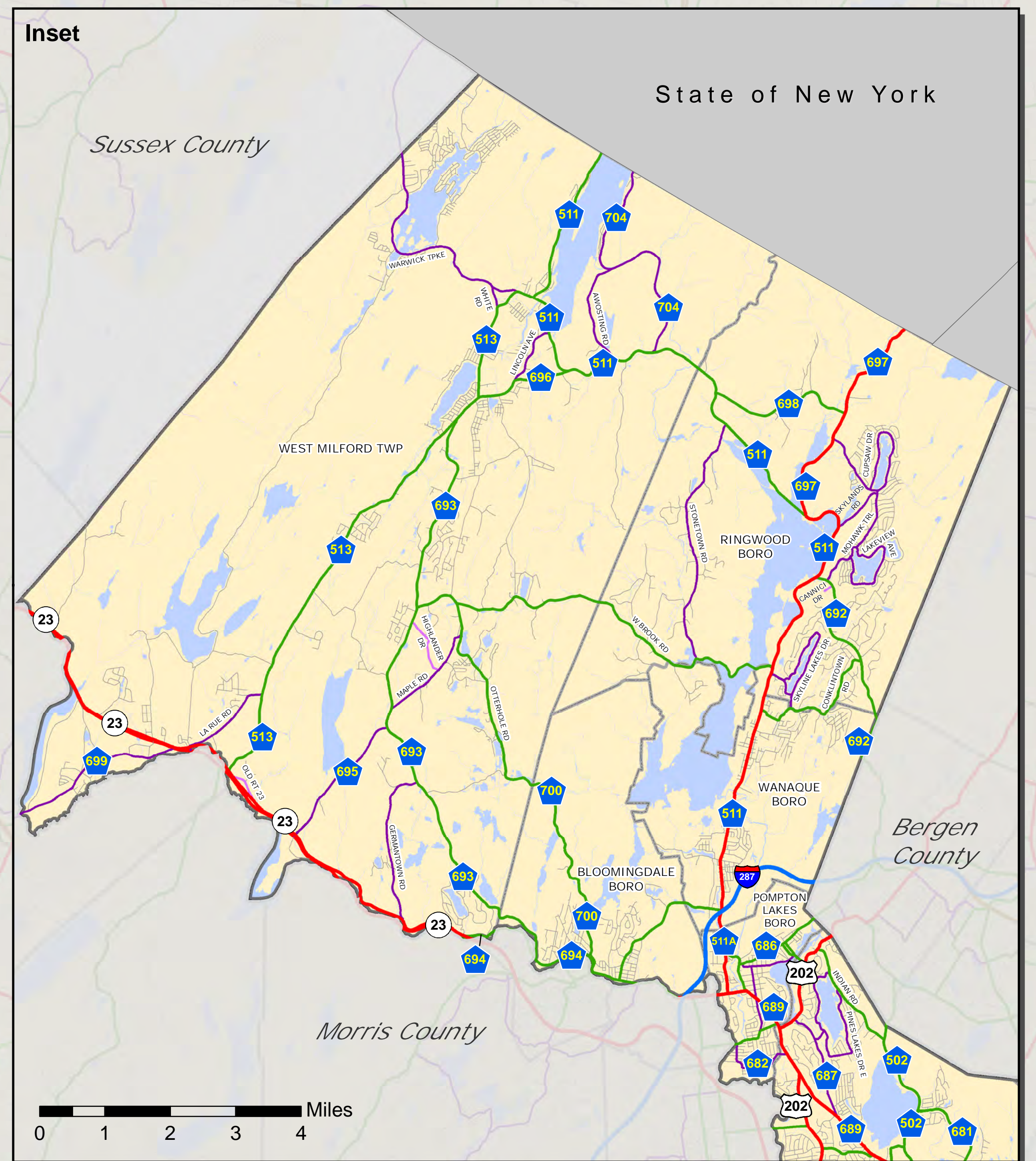
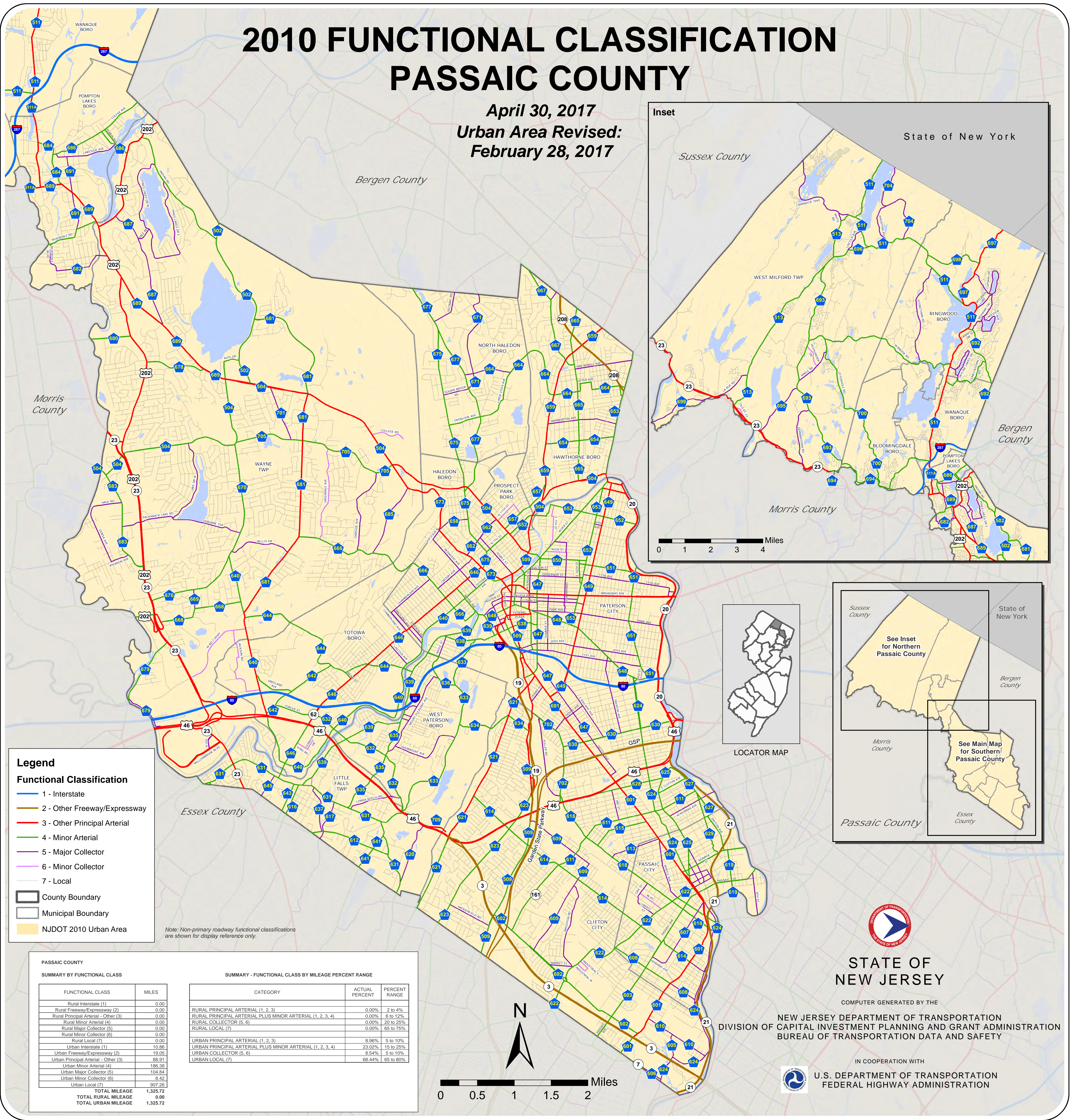


2010 FUNCTIONAL CLASSIFICATION PASSAIC COUNTY

April 30, 2017
Urban Area Revised:
February 28, 2017



Legend

Functional Classification

- 1 - Interstate
- 2 - Other Freeway/Expressway
- 3 - Other Principal Arterial
- 4 - Minor Arterial
- 5 - Major Collector
- 6 - Minor Collector
- 7 - Local

- County Boundary
- Municipal Boundary
- NJDOT 2010 Urban Area

Note: Non-primary roadway functional classifications are shown for display reference only.

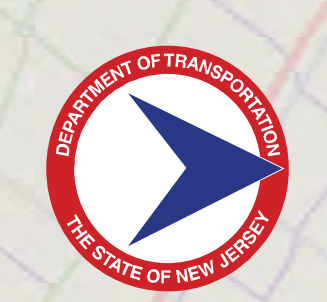
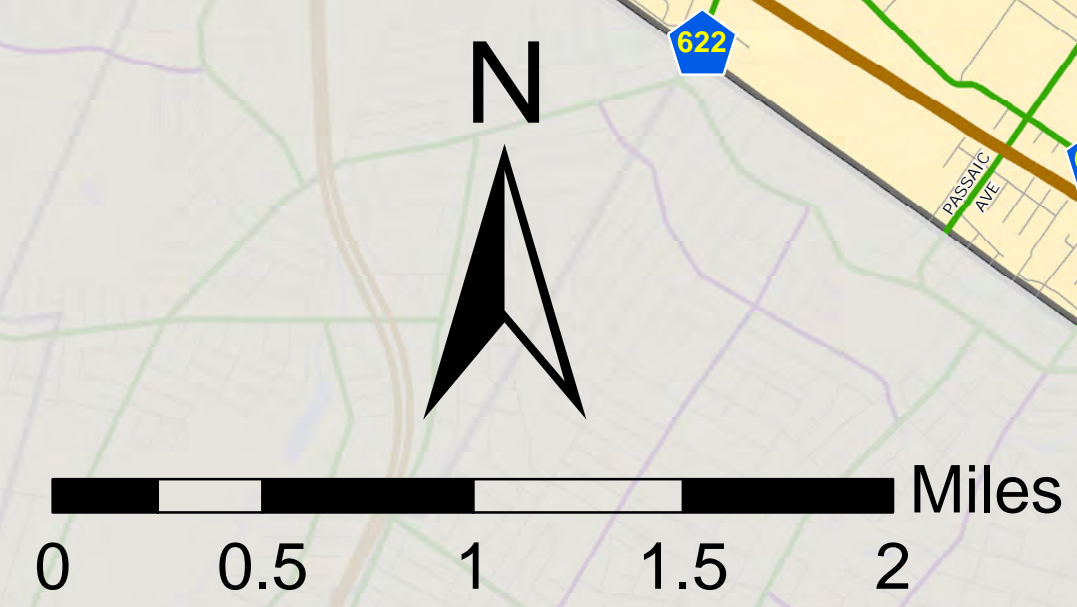
PASSAIC COUNTY

SUMMARY BY FUNCTIONAL CLASS

FUNCTIONAL CLASS	MILES
Rural Interstate (1)	0.00
Rural Freeway/Expressway (2)	0.00
Rural Principal Arterial - Other (3)	0.00
Rural Minor Arterial (4)	0.00
Rural Major Collector (5)	0.00
Rural Minor Collector (6)	0.00
Rural Local (7)	0.00
Urban Interstate (1)	10.66
Urban Freeway/Expressway (2)	19.05
Urban Principal Arterial - Other (3)	88.91
Urban Minor Arterial (4)	186.38
Urban Major Collector (5)	104.84
Urban Minor Collector (6)	8.42
Urban Local (7)	907.26
TOTAL MILEAGE	1,325.72
TOTAL RURAL MILEAGE	0.00
TOTAL URBAN MILEAGE	1,325.72

SUMMARY - FUNCTIONAL CLASS BY MILEAGE PERCENT RANGE

CATEGORY	ACTUAL PERCENT	PERCENT RANGE
RURAL PRINCIPAL ARTERIAL (1, 2, 3)	0.00%	2 to 4%
RURAL PRINCIPAL ARTERIAL PLUS MINOR ARTERIAL (1, 2, 3, 4)	0.00%	6 to 12%
RURAL COLLECTOR (5, 6)	0.00%	20 to 25%
RURAL LOCAL (7)	0.00%	65 to 75%
URBAN PRINCIPAL ARTERIAL (1, 2, 3)	8.96%	5 to 10%
URBAN PRINCIPAL ARTERIAL PLUS MINOR ARTERIAL (1, 2, 3, 4)	23.02%	15 to 25%
URBAN COLLECTOR (5, 6)	8.54%	5 to 10%
URBAN LOCAL (7)	68.44%	65 to 80%



STATE OF
NEW JERSEY

COMPUTER GENERATED BY THE
NEW JERSEY DEPARTMENT OF TRANSPORTATION
DIVISION OF CAPITAL INVESTMENT PLANNING AND GRANT ADMINISTRATION
BUREAU OF TRANSPORTATION DATA AND SAFETY



IN COOPERATION WITH
U.S. DEPARTMENT OF TRANSPORTATION
FEDERAL HIGHWAY ADMINISTRATION