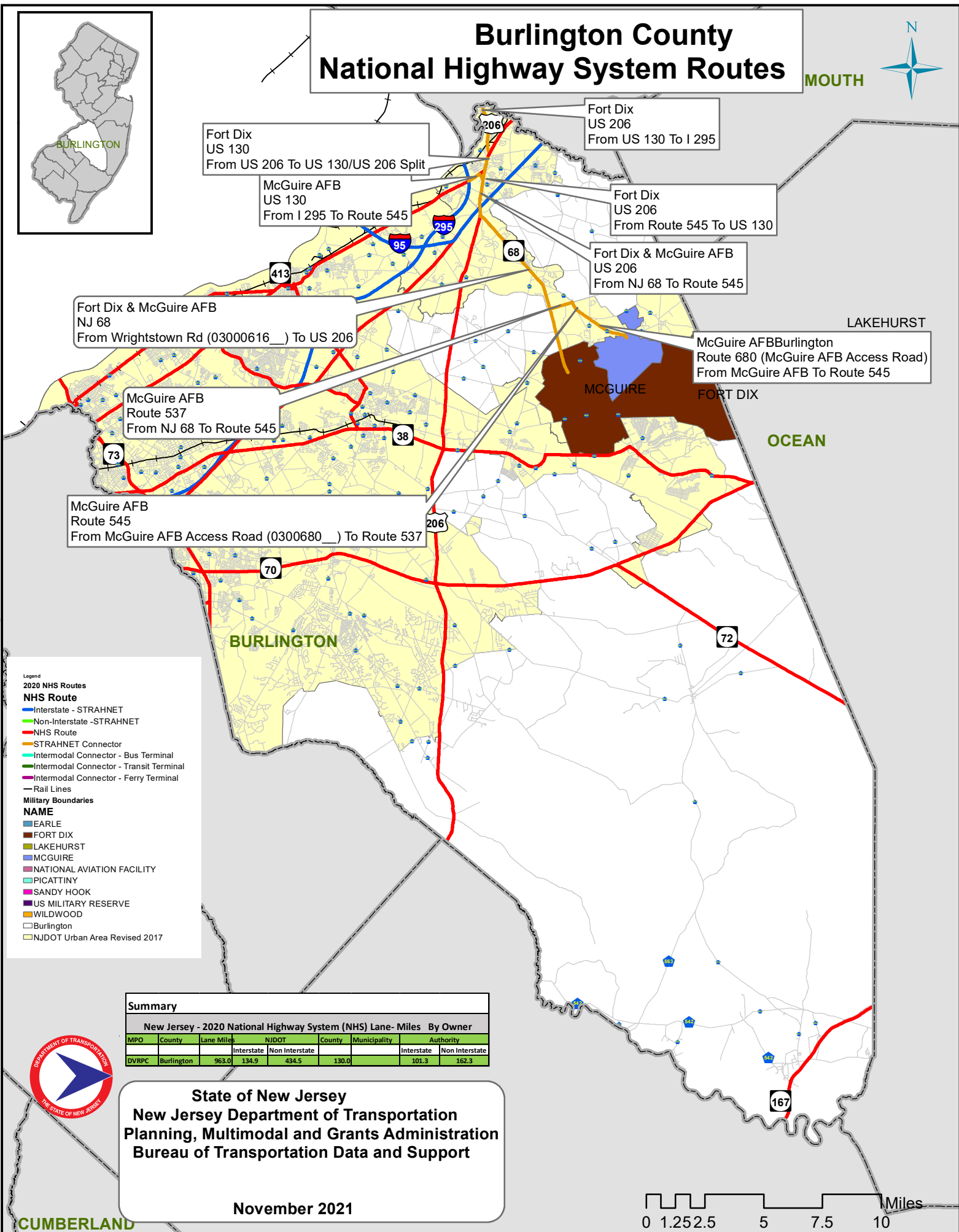
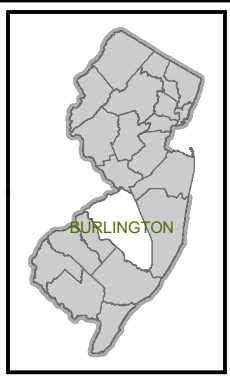


Burlington County National Highway System Routes

MOUTH



Fort Dix & McGuire AFB
NJ 68
From Wrightstown Rd (03000616 __) To US 206

McGuire AFB
Route 537
From NJ 68 To Route 545

McGuire AFB
Route 545
From McGuire AFB Access Road (03000680 __) To Route 537

McGuire AFB
US 130
From I 295 To Route 545

Fort Dix
US 206
From US 130 To I 295

Fort Dix
US 206
From Route 545 To US 130

Fort Dix & McGuire AFB
US 206
From NJ 68 To Route 545

McGuire AFB Burlington
Route 680 (McGuire AFB Access Road)
From McGuire AFB To Route 545

- Legend**
2020 NHS Routes
NHS Route
Interstate - STRAHNET
Non-Interstate - STRAHNET
NHS Route
STRAHNET Connector
Intermodal Connector - Bus Terminal
Intermodal Connector - Transit Terminal
Intermodal Connector - Ferry Terminal
Rail Lines
Military Boundaries
NAME
EARLE
FORT DIX
LAKEHURST
MCGUIRE
NATIONAL AVIATION FACILITY
PICATTINY
SANDY HOOK
US MILITARY RESERVE
WILDWOOD
Burlington
NJDOT Urban Area Revised 2017

Summary							
New Jersey - 2020 National Highway System (NHS) Lane-Miles By Owner							
MPO	County	Lane Miles		NJDOT		Municipality	
		Interstate	Non Interstate	Interstate	Non Interstate	Interstate	Non Interstate
DVRPC	Burlington	963.0	134.9	434.5	130.0	101.3	162.3

State of New Jersey
New Jersey Department of Transportation
Planning, Multimodal and Grants Administration
Bureau of Transportation Data and Support

November 2021

0 1.25 2.5 5 7.5 10 Miles

