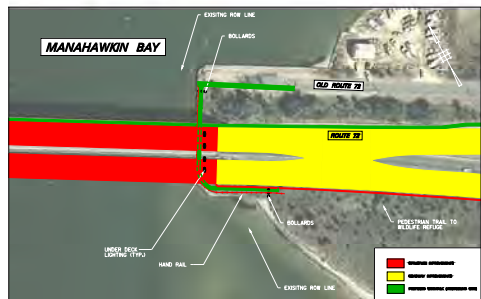
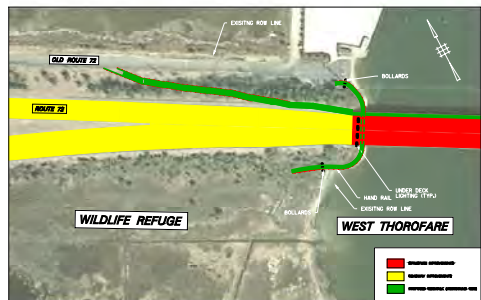


PEDESTRIAN ACCESS TO BEACH HAVEN WEST UNDER THE BRIDGE
DETAIL 'A'



PEDESTRIAN ACCESS TO WILDLIFE REFUGE UNDER THE BRIDGE
DETAIL 'B'



PEDESTRIAN ACCESS TO WILDLIFE REFUGE UNDER THE BRIDGE
DETAIL 'C'



- STRUCTURE IMPROVEMENTS
- ROADWAY IMPROVEMENTS
- PROPOSED SIDEWALK (WESTBOUND SIDE)

ROUTE 72
Manahawkin Bay Bridges
PROPOSED SIDEWALK - WESTBOUND SIDE

TOWNSHIP OF STAFFORD
 BOROUGH OF SHIP BOTTOM
 NOVEMBER, 2009
 OCEAN COUNTY