

Nonfarm Payroll Employment, January 2007 -- Present (United States)

Jun-2019:
151,267

160,000
140,000
120,000
100,000
80,000
60,000
40,000
20,000
0

Jan-2007
Apr-2007
Jul-2007
Oct-2007
Jan-2008
Apr-2008
Jul-2008
Oct-2008
Jan-2009
Apr-2009
Jul-2009
Oct-2009
Jan-2010
Apr-2010
Jul-2010
Oct-2010
Jan-2011
Apr-2011
Jul-2011
Oct-2011
Jan-2012
Apr-2012
Jul-2012
Oct-2012
Jan-2013
Apr-2013
Jul-2013
Oct-2013
Jan-2014
Apr-2014
Jul-2014
Oct-2014
Jan-2015
Apr-2015
Jul-2015
Oct-2015
Jan-2016
Apr-2016
Jul-2016
Oct-2016
Jan-2017
Apr-2017
Jul-2017
Oct-2017
Jan-2018
Apr-2018
Jul-2018
Oct-2018
Jan-2019
Apr-2019
Jul-2019

Compiled by OREA using BLS data

Private-Sector Employment, January 2007 -- Present (United States)

140,000

120,000

100,000

80,000

60,000

40,000

20,000

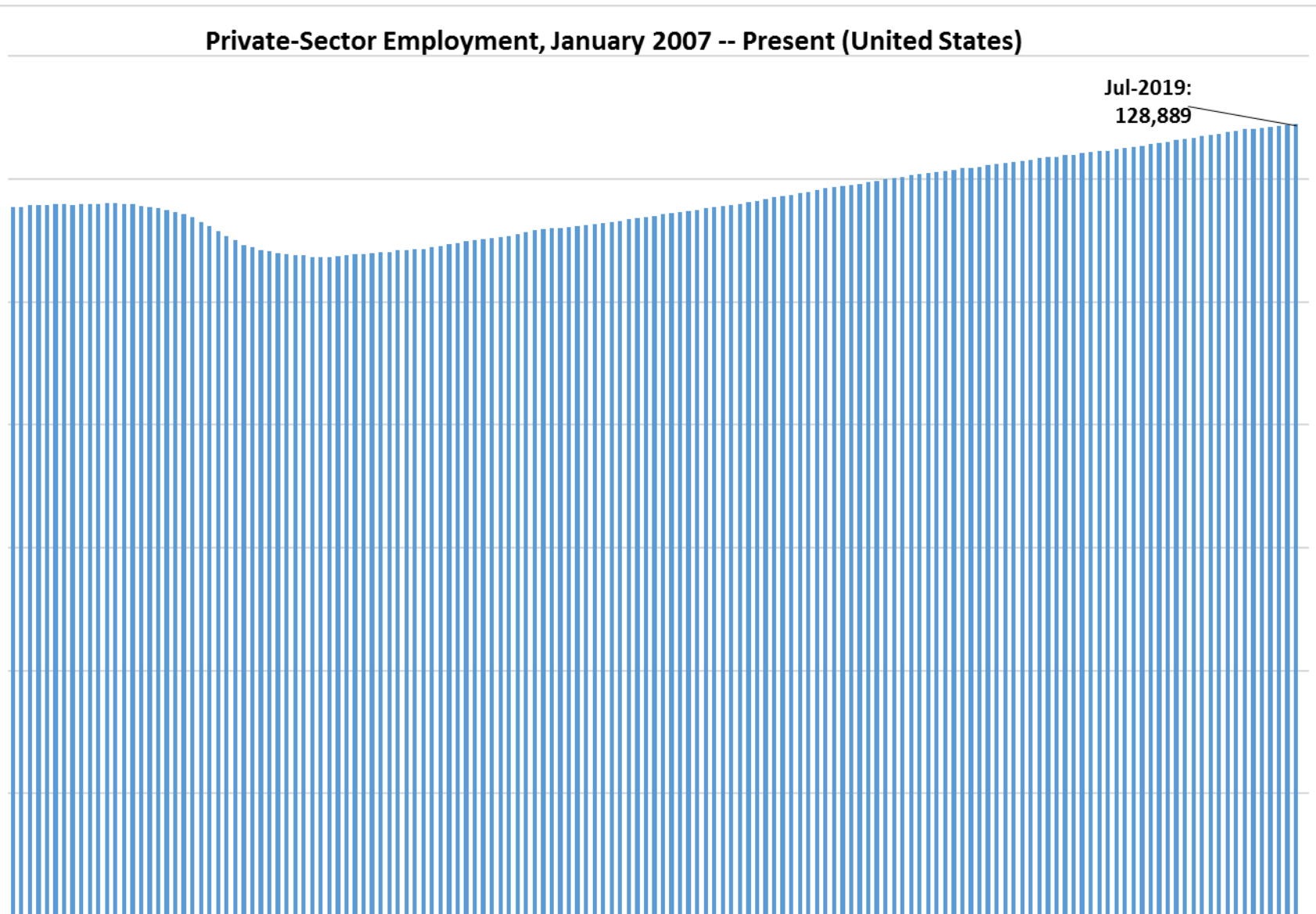
0

Jul-2019:

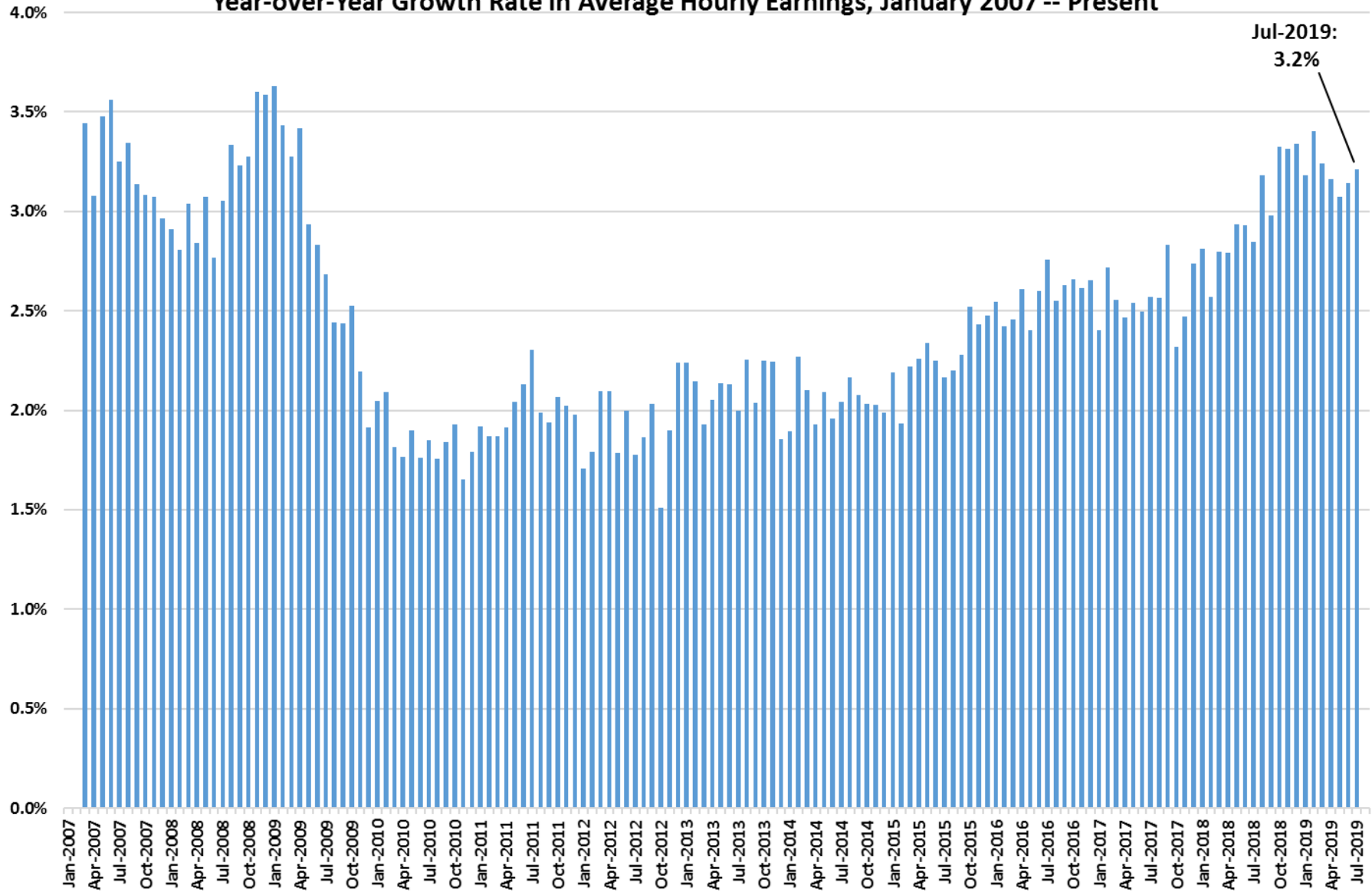
128,889

Jan-2007
Apr-2007
Jul-2007
Oct-2007
Jan-2008
Apr-2008
Jul-2008
Oct-2008
Jan-2009
Apr-2009
Jul-2009
Oct-2009
Jan-2010
Apr-2010
Jul-2010
Oct-2010
Jan-2011
Apr-2011
Jul-2011
Oct-2011
Jan-2012
Apr-2012
Jul-2012
Oct-2012
Jan-2013
Apr-2013
Jul-2013
Oct-2013
Jan-2014
Apr-2014
Jul-2014
Oct-2014
Jan-2015
Apr-2015
Jul-2015
Oct-2015
Jan-2016
Apr-2016
Jul-2016
Oct-2016
Jan-2017
Apr-2017
Jul-2017
Oct-2017
Jan-2018
Apr-2018
Jul-2018
Oct-2018
Jan-2019
Apr-2019
Jul-2019

Compiled by OREA using BLS data



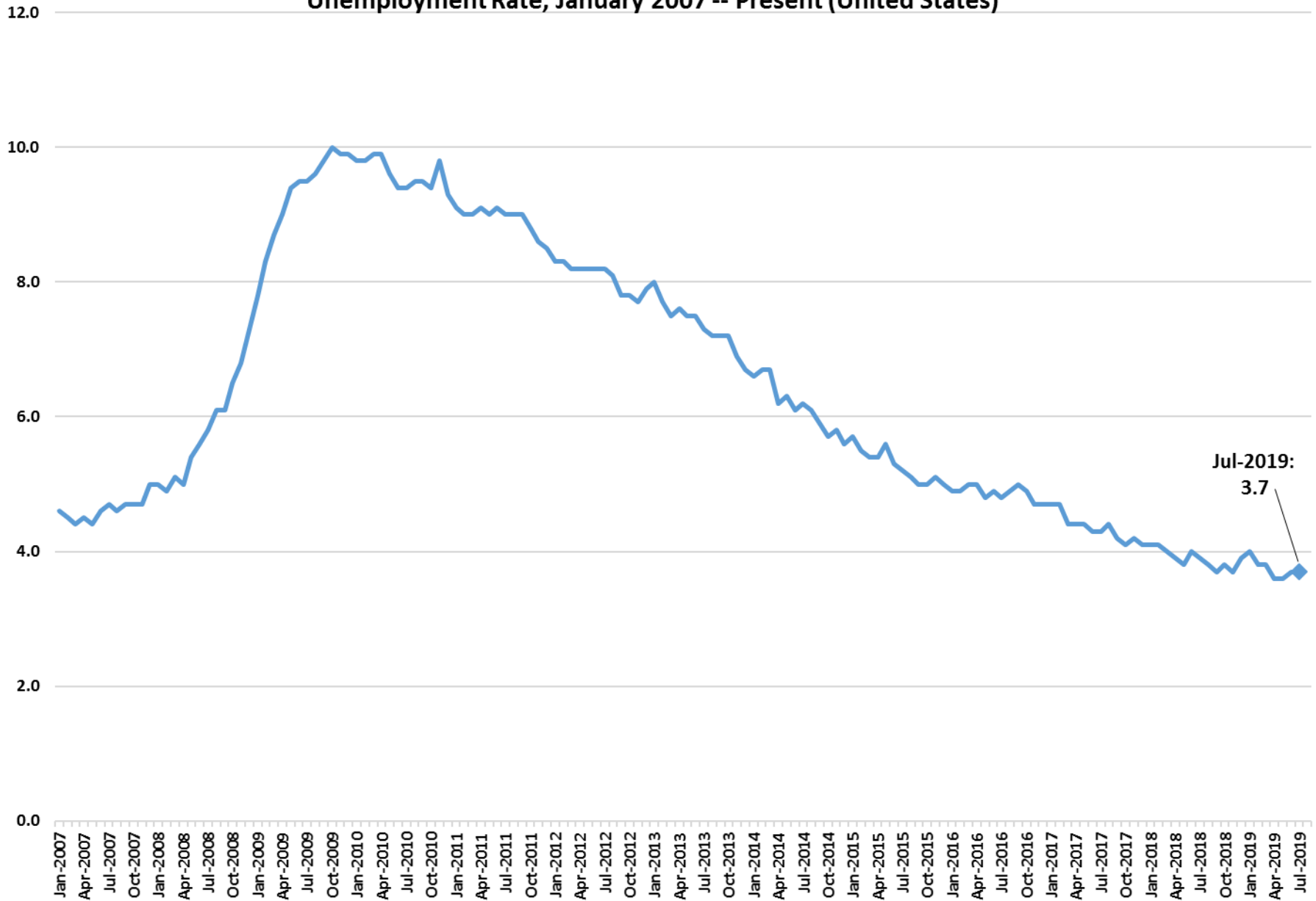
Year-over-Year Growth Rate in Average Hourly Earnings, January 2007 -- Present



Jul-2019:
3.2%

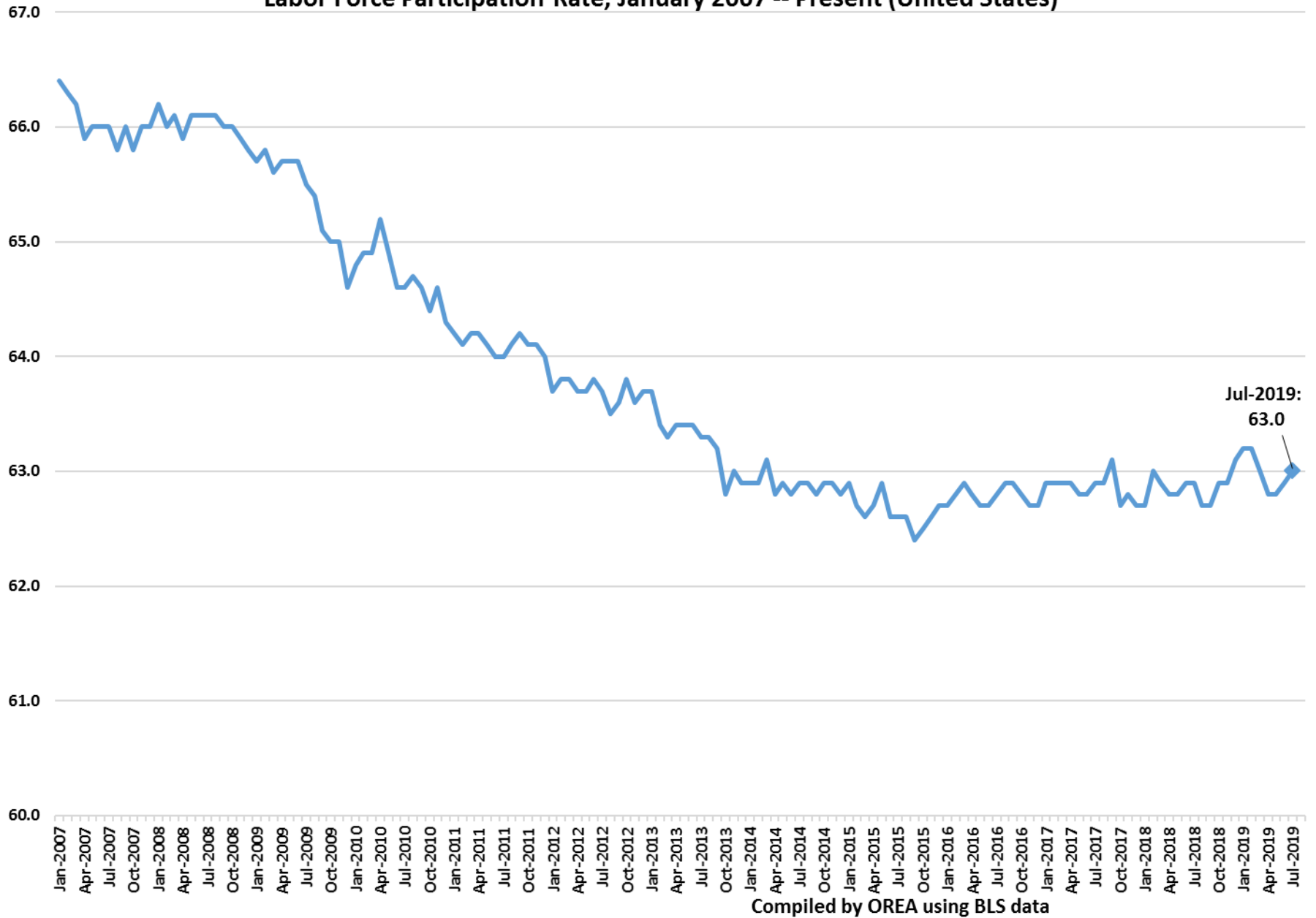
Compiled by OREA using BLS data

Unemployment Rate, January 2007 -- Present (United States)



Compiled by OREA using BLS data

Labor Force Participation Rate, January 2007 -- Present (United States)



Compiled by OREA using BLS data