

**THE CONSOLIDATED POLICE AND
FIREMEN'S PENSION FUND
OF NEW JERSEY
ANNUAL REPORT
OF THE ACTUARY
PREPARED AS OF JULY 1, 2002**

March 12, 2003

Commission
Consolidated Police and Firemen's Pension
Fund of New Jersey
Trenton, New Jersey

Ladies and Gentlemen:

The law governing the operation of The Consolidated Police and Firemen's Pension Fund of New Jersey provides for annual actuarial valuations of the System. The results of the July 1, 2002 valuation are submitted in this report which also includes a comparison with the preceding year's valuation.

The valuation shows the financial condition of the Plan as of July 1, 2002 and gives the basis for determining the required annual contribution for the plan year beginning July 1, 2002.

The valuation was prepared on the basis of the same assumptions as were employed for the previous valuation which include an interest rate of 8.75% per year.

Once again, the actuaries continue to recommend that the funding policy be reviewed since the actual investment returns have been consistently less than 8.75% .

The Table of Contents, which follows, highlights the Sections of the Report.

Respectfully submitted,

(Signed) GEORGE M. LOVAGLIO

George M. Lovaglio
Principal, Consulting Actuary

(Signed) LISA A. WITLEN

Lisa A. Witlen
Principal, Consulting Actuary

TABLE OF CONTENTS

<u>Section</u>	<u>Item</u>	<u>Page No.</u>
I	Summary of Key Results	1
II	Employee Data	6
III	Assets, Liabilities and Contributions	8
	A. Market Value of Assets as of June 30, 2002	
	B. Reconciliation of Market Value of Assets from June 30, 2001 to June 30, 2002	
	C. Development of Actuarial Value of Assets as of July 1, 2002	
	D. Present Value of Benefits	
	E. Development of State Contribution	
IV	Comments Concerning the Valuation	11
V	Accounting Information	12
 <u>Appendix</u>		
A	Brief Summary of the Benefit and Contribution Provisions as Interpreted for Valuation Purposes	15
B	Outline of Actuarial Assumptions and Methods	17
C	Tabulations Used as a Basis for the 2002 Valuation	19
	Table 1 – Service Retirements	
	Table 2 – Ordinary Disability Retirements	
	Table 3 – Accidental Disability Retirements	
	Table 4 – Active Members’ Death Benefits	
	Table 5 – Retired Members’ Death Benefits	

REPORT ON THE ANNUAL
VALUATION OF
THE CONSOLIDATED POLICE AND FIREMEN'S PENSION FUND
OF NEW JERSEY
PREPARED AS OF JULY 1, 2002

SECTION I - SUMMARY OF KEY RESULTS

The Consolidated Police and Firemen's Pension Fund of New Jersey was established by Chapter 358, P.L. 1952. This report, prepared as of July 1, 2002 presents the results of the annual actuarial valuation of the Fund.

For convenience of reference, the principal results of the valuation and a comparison with the preceding year's results are summarized on the following pages.

Valuation Date	July 1, 2002	July 1, 2001
<u>Participant Data</u>		
Active Members	0	0
Retired Members and Beneficiaries	<u>1,198</u>	<u>1,364</u>
Total Participants	1,198	1,364
Annual Compensation	\$ 0	\$ 0
Annual Retirement Allowances	\$ 8,155,821	\$ 9,098,628
<u>Assets</u>		
Market Value of Assets	\$ 27,258,756	\$ 32,090,874
Actuarial Value of Assets	\$ 34,556,890	\$ 39,162,802
<u>Contribution Amounts</u>		
Normal Contribution	\$ 0	\$ 0
Accrued Liability Contribution*	<u>1,950,425</u>	<u>2,713,914</u>
Total Contribution	\$ 1,950,425	\$ 2,713,914

*The unfunded accrued liability has been amortized over a period of one year.

The major benefit and contribution provisions of the statute as reflected in the valuation are summarized in Appendix A. There were no other changes from the provisions used in the previous valuation.

The actuarial assumptions and methods used for valuing the Fund are summarized in Appendix B. There were no changes in actuarial assumptions and methods since the previous valuation. As noted in prior valuations, the actuaries continue to recommend reviewing the funding alternatives since recent investment rates of return have been considerably less than the assumed rate of 8.75%. Alternatives that could be considered are to merge the Fund into another Fund, to revise the actuarial rate of return, or to revise the asset allocation.

The combination of the plan provisions, actuarial assumptions and member and beneficiary data is used to generate the overall required level of State contributions. The required State contribution is developed in Section III E.

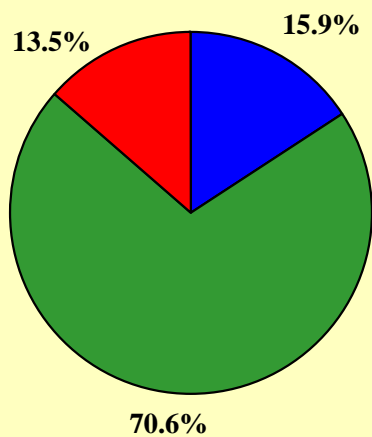
The valuation also generates a balance sheet which summarizes in some detail the total present and prospective assets and liabilities of the Fund. A summary comparison of the balance sheets as of July 1, 2001 and July 1, 2002 is set forth in the following table. The allocation of assets among the various investment alternatives is shown in graphic form on page 5.

TABLE I
COMPARATIVE BALANCE SHEET

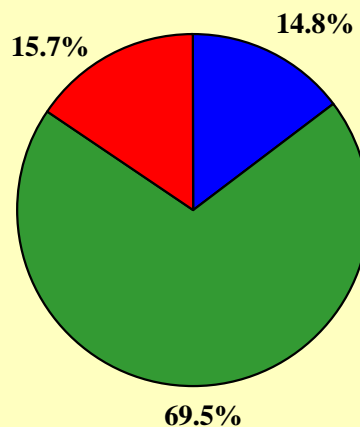
<u>ASSETS</u>	2002	2001
Actuarial value of assets of Fund	\$ 34,556,890	\$ 39,162,802
Unfunded accrued liability/(surplus)	1,793,494	2,495,553
Total Assets	\$ 36,350,384	\$ 41,658,355
<u>LIABILITIES</u>		
Present value of benefits to present beneficiaries payable from the Retirement Reserve Fund	\$ 36,350,384	\$ 41,658,355
Present value of benefits to present active members	0	0
Total Liabilities	\$ 36,350,384	\$ 41,658,355

THE CONSOLIDATED POLICE AND FIREMEN'S PENSION FUND OF NEW JERSEY

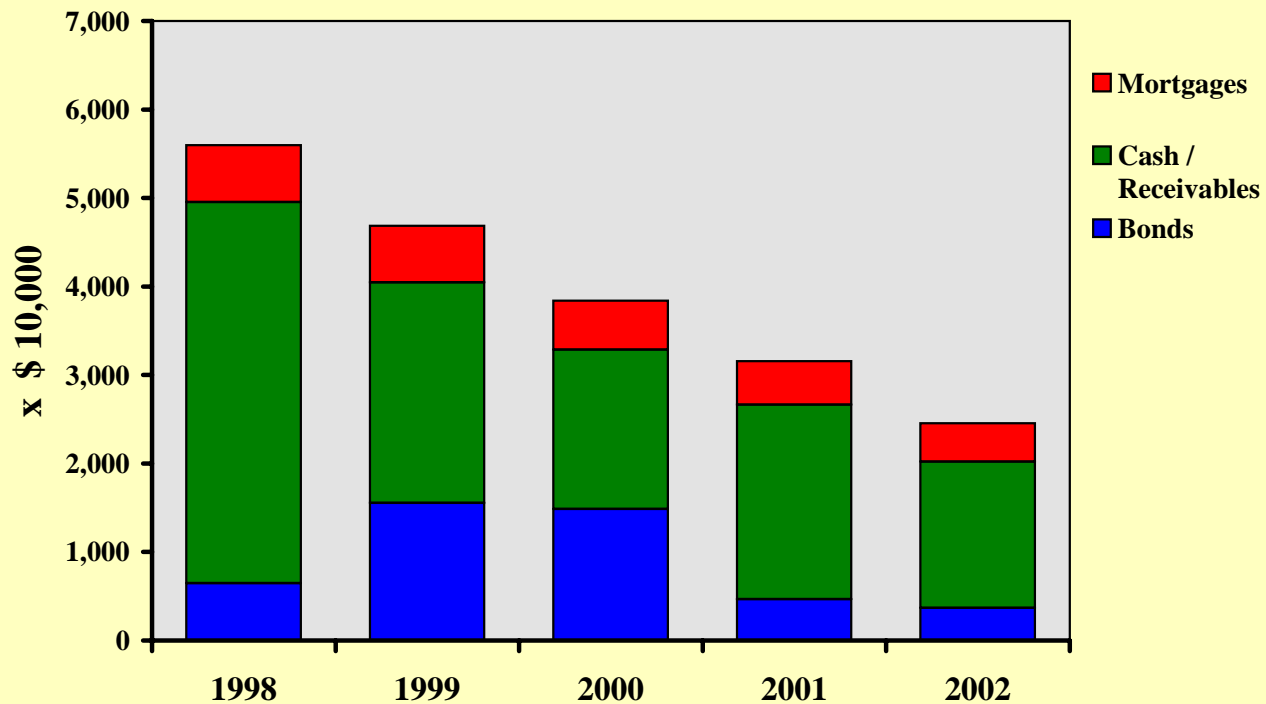
ASSET ALLOCATION MARKET VALUE



2002



2001



SECTION II - EMPLOYEE DATA

The data employed for the valuations were furnished to the actuary by the Division of Pensions and Benefits. Appendix C contains summary tables which present the number and retirement allowances of members classified by age. The following summarizes and compares the Fund membership as of July 1, 2001 and July 1, 2002 by various categories.

ACTIVE MEMBERSHIP

- There have been no active participants in the Plan since July 1, 1992.

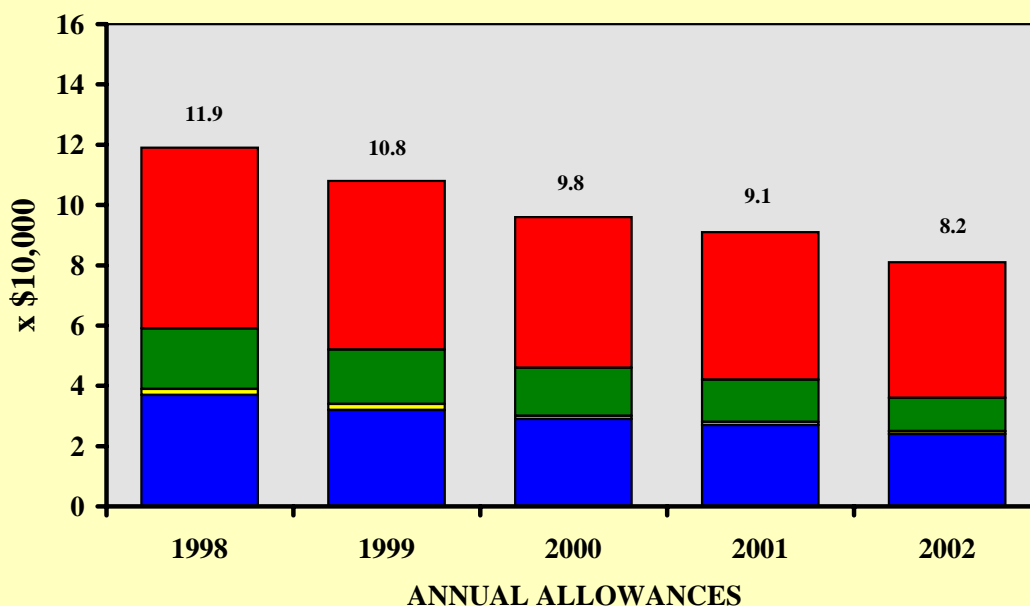
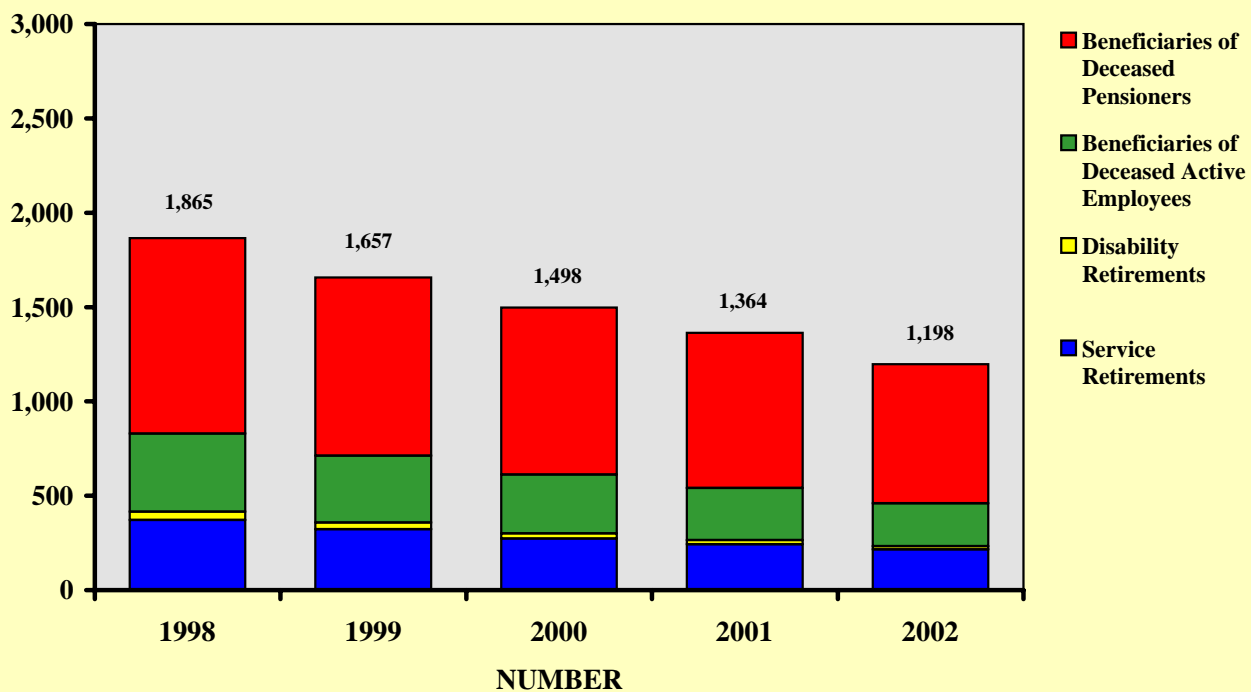
RETIRED MEMBERS AND BENEFICIARIES

GROUP	2002		2001	
	Number	Annual Allowances	Number	Annual Allowances
Service Retirements	215	\$ 2,441,034	243	\$ 2,715,171
Ordinary Disability Retirements	12	\$ 43,902	15	\$ 55,430
Accidental Disability Retirements	6	\$ 38,780	7	\$ 40,797
Beneficiaries of Deceased Pensioners	739	\$ 4,514,218	823	\$ 4,927,053
Beneficiaries of Deceased Active Employees	226	\$ 1,117,887	276	\$ 1,360,177

Graphic presentations of the statistical data on membership for the five preceding years are shown on the following page.

THE CONSOLIDATED POLICE AND FIREMEN'S PENSION FUND OF NEW JERSEY

SUMMARY OF RETIRED PARTICIPATION



SECTION III - ASSETS, LIABILITIES AND CONTRIBUTIONS**A. Market Value of Assets as of June 30, 2002**

1.	Assets		
	a. Cash	\$	663,520
	b. Investment Holdings		22,600,893
	c. Accrued Interest on Investments		98,773
	d. Accounts Receivable - Other		1,869,650
	e. Administrative Expense Receivable		62,379
	f. Employers' Contributions Receivable – Pension Adjustment		981,084
	g. Total	\$	26,276,299
2.	Liabilities		
	a. Pension Payroll Payable	\$	567,973
	b. Pension Adjustment Payroll Payable		992,056
	c. Withholdings Payable		129,546
	d. Administrative Expense Payable		7,364
	e. Accounts Payable – Other		4,492
	f. Accounts Payable – Pension Adjustment		30,026
	g. Total	\$	1,731,457
3.	Preliminary Market Value of Assets as of June 30, 2002 = 1(g) – 2(g)	\$	24,544,842
4.	State Appropriations Receivable	\$	2,713,914
5.	Market Value of Assets as of June 30, 2002 = 3 + 4	\$	27,258,756

B. Reconciliation of Market Value of Assets from June 30, 2001 to June 30, 2002

1.	Market Value of Assets as of June 30, 2001	\$	31,584,333
2.	Increases		
	a. Members' Contributions at 7%	\$	0
	b. Municipal Contributions at 6%		0
	c. State Appropriations		506,541
	d. Administrative Revenue – Local		57,252
	e. Pension Adjustment		12,199,212
	f. Minimum Pension Benefit		1
	g. Investment Income		980,795
	h. Total	\$	13,743,801
3.	Decreases		
	a. Retirement Allowances	\$	8,521,985
	b. Benefit Expense – Pension Adjustment		12,199,212
	c. Benefit Expense – Minimum Pension		1
	d. Miscellaneous Expense		0
	e. Administrative Expenses		62,094
	f. Total	\$	20,783,292
4.	Preliminary Market Value of Assets as of June 30, 2002 = 1 + 2(h) – 3(f)	\$	24,544,842
5.	State Appropriations Receivable	\$	2,713,914
6.	Market Value of Assets as of June 30, 2002 = 4 + 5	\$	27,258,756

C. Development of Actuarial Value of Assets as of July 1, 2002

1.	Actuarial Value of Assets as of July 1, 2001 (without State Appropriations Receivable)	\$	38,656,261
2.	Net Cash Flow excluding Investment Income and receivable Employer Contributions		(8,020,286)
3.	Expected Investment Income at 8.75%:		
	a. Interest on Assets as of July 1, 2001	\$	3,382,423
	b. Interest on Net Cash Flow		<u>(350,888)</u>
	c. Total	\$	3,031,535
4.	Expected Actuarial Value of Assets as of July 1, 2002 = 1 + 2 + 3 (c)	\$	33,667,510
5.	20% of Difference from Preliminary Market Value of Assets		(1,824,534)
6.	State Appropriations Receivable		<u>2,713,914</u>
7.	Actuarial Value of Assets as of July 1, 2002 = 4 + 5 + 6	\$	34,556,890

D. Present Value of Benefits

1.	Active Members		
	a. Service Retirement	\$	0
	b. Death After Retirement		<u>0</u>
	c. Total: (a) + (b)	\$	0
2.	Service Retirees		11,559,156
3.	Disability Retirees		354,257
4.	Beneficiaries of Deceased Pensioners		20,119,583
5.	Beneficiaries of Deceased Active Employees		<u>4,317,388</u>
6.	Total Present Value of Benefits = 1(c) + 2 + 3 + 4 + 5	\$	36,350,384

E. Development of State Contribution

1.	Present Value of Benefits as of July 1, 2002	\$	36,350,384
2.	Actuarial Value of Assets		<u>34,556,890</u>
3.	Unfunded Accrued Liability/(Net Surplus) = 1. – 2.	\$	1,793,494
4.	Amortization Years Remaining*		1
5.	Total State Contribution as of July 1, 2002		1,793,494
6.	Total State Contribution as of July 1, 2003	\$	1,950,425

*The latest unfunded accrued liability payment schedule required the amortization of any plan gains or losses over the remainder of the 9 year period that began on June 30, 1991. Without additional guidance, we have assumed the immediate payment of any unfunded accrued liability.

SECTION IV - COMMENTS CONCERNING THE VALUATION

The variation in liabilities and contributions reflects the Fund's actual experience during the year.

The Fund experienced a net actuarial loss during the year that ended June 30, 2002.

The experience loss is, once again, primarily due to an actual return on Fund assets less than that expected. For valuation purposes, an 8.75% per annum rate of return was assumed. The actual return on the Fund's actuarial value of assets was approximately 3.48% for the period from July 1, 2001 through June 30, 2002.

The following shows the development of the actuarial experience and identifies the major experience components:

A. Calculation of Actuarial Experience for the Year Ended June 30, 2002

1.	Unfunded Accrued Liability as of July 1, 2001	\$ 2,495,553
2.	Interest on 1. at 8.75%	218,361
3.	Contributions Receivable	2,713,914
4.	Interest on 3.	<u>N/A</u>
5.	Expected Unfunded Accrued Liability as of July 1, 2002 = 1. + 2. - 3. - 4.	\$ 0
6.	Actual Unfunded Accrued Liability as of July 1, 2002	\$ 1,793,494
7.	Actuarial Loss (Gain) = 6. - 5.	\$ 1,793,494

B. Components of Actuarial Experience

1.	Investment (Gain) Loss	\$ 1,824,534
2.	Other (Gain) Loss, including mortality and changes in employee data	<u>(31,040)</u>
3.	Total Actuarial (Gain) Loss = 1. + 2.	\$ 1,793,494

SECTION V - ACCOUNTING INFORMATION

Statement No. 5 of the Governmental Accounting Standards Board, issued November 1986, established standards of disclosure of pension information by public retirement systems. Statement No. 25 of the Governmental Accounting Standards Board, issued November 1994, established financial reporting standards for defined benefit pension plans and for the notes to the financial statements of defined contribution plans of state and local governmental liabilities and superseded Statement No. 5 effective for periods beginning after June 15, 1996. Statement No. 27, Accounting for Pensions by State and Local Governmental Employers superseded Statement 5 for employers participating in pension plans and is effective for periods beginning after June 15, 1997.

The information required by both Statements No. 25 and No. 27 is presented in the following tables. These include the development of the Annual Required Contribution (ARC), the development of the Net Pension Obligation (NPO), the Schedule of Funding Progress and the Schedule of Employer Contributions.

(A) Development of the Annual Required Contribution (ARC) as of June 30, 2004

1.	Actuarial Value of Plan Assets as of June 30, 2002		
	(a) Valuation Assets as of June 30, 2002	\$	34,556,890
	(b) Adjustment for Receivable Contributions included in (a)		<u>2,713,914</u>
	(c) Valuation Assets as of June 30, 2002 for GASB Disclosure = (a) - (b)	\$	31,842,976
2.	Actuarial Accrued Liability as of June 30, 2002 for GASB Disclosure	\$	36,350,384

3.	Unfunded Actuarial Accrued Liability/(Surplus) as of June 30, 2002 = 2 - 1 (c)	\$	4,507,408
4.	Amortization of Unfunded Actuarial Accrued Liability/(Surplus) over 1 year	\$	4,507,408
5.	Normal Cost as of June 30, 2002	\$	0
6.	Annual Required Contribution as of June 30, 2004		
	(a) Annual Required Contribution as of June 30, 2002 = 4. + 5.	\$	4,507,408
	(b) Interest Adjustment to June 30, 2004		<u>823,306</u>
	(c) Annual Required Contribution as of June 30, 2004 = (a) + (b)	\$	5,330,714

(B) Development of the Net Pension Obligation (NPO) as of June 30, 2004:

1.	Annual Required Contribution as of June 30, 2004	\$	5,330,714
2.	Interest on Net Pension Obligation		73,196
3.	Adjustment to Annual Required Contribution		<u>(909,727)</u>
4.	Annual Pension Cost = 1. + 2. + 3.	\$	4,494,183
5.	Expected Employer Contributions for Fiscal Year 2004		<u>1,950,425</u>
6.	Increase in Net Pension Obligation = 4. - 5.	\$	2,543,758
7.	Net Pension Obligation at June 30, 2003		<u>836,531</u>
8.	Net Pension Obligation at June 30, 2004 = 6. + 7.	\$	3,380,289

C. Schedule of Funding Progress

Actuarial Valuation Date	Actuarial Value of Assets (a)	Actuarial Accrued Liability (b)	Unfunded Actuarial Accrued Liability (b-a)	Funded Ratio (a/b)	Covered Payroll (c)	Unfunded Actuarial Accrued Liability as a Percentage of Covered Payroll $\frac{(b-a)}{c}$
6/30/97	\$ 70,420,937	\$ 66,004,245	\$ (4,416,692)	106.7%	\$ 0	N/A
6/30/98	\$ 62,205,001	\$ 59,272,789	\$ (2,932,212)	104.9%	\$ 0	N/A
6/30/99	\$ 54,018,660	\$ 52,226,208	\$ (1,792,452)	103.4%	\$ 0	N/A
6/30/00	\$ 46,078,644	\$ 46,544,429	\$ 465,785	99.0%	\$ 0	N/A
6/30/01	\$ 38,656,261	\$ 41,658,355	\$ 3,002,094	92.8%	\$ 0	N/A
6/30/02	\$ 31,842,796	\$ 36,350,384	\$ 4,507,408	87.6%	\$ 0	N/A

D. Schedule of Employer Contributions

Fiscal Year	Annual Required Contribution	Employer Contribution	Percentage Contributed
1999	\$ 0	\$ 0	100.0%
2000	\$ 0	\$ 0	100.0%
2001	\$ 0	\$ 0	100.0%
2002	\$ 550,864	\$ 506,541	92.0%
2003	\$ 3,550,445	\$ 2,713,914	76.4%
2004	\$ 5,330,714	\$ 1,950,425	36.6%

E. The information presented in the required supplementary schedules was determined as part of the actuarial valuation. Additional information follows:

Valuation Date	June 30, 2002
Actuarial Cost Method	Projected Unit Credit
Amortization Method	Level Dollar, closed
Remaining Amortization Period	1 year
Asset Valuation Method	5 year average of market value
Actuarial Assumptions:	
Investment Rate of Return	8.75%

APPENDIX A

BRIEF SUMMARY OF THE BENEFIT AND
CONTRIBUTION PROVISIONS AS INTERPRETED
FOR VALUATION PURPOSES

Eligibility for Membership

Member of a municipal police department, municipal paid or part-paid fire department or county police department, or a paid or part-paid fire department of a fire district located in a township who has contributed to this pension fund; and who is not covered by the Police and Firemen’s Retirement System which became effective on July 1, 1994.

Active Member: Any member who is a policeman, fireman, detective, lineman, driver of police van, fire alarm operator, or inspector of combustibles and who is subject to call for active service as such.

Employee Member: Any member who is not subject to active service or duty.

1. Definitions

Plan Year	The 12-month period beginning on July 1 and ending on June 30.
Service	Service rendered while a member as described above.
Compensation	Base salary; not including individual salary adjustments which are granted primarily in anticipation of retirement or additional remuneration for performing temporary duties beyond the regular work day. (Effective June 30, 1996 Chapter 113, P.L. 1997 provided that the amount of compensation used for employer and member contributions and benefits under the program cannot exceed the compensation limitation of Section 401(a)(17) of the Internal Revenue Code).
Final Compensation	Compensation received during the last 12 months of service preceding retirement or termination of service.
Average Salary	Salary averaged over the last three years prior to retirement or other termination of service.

2. Benefits:

Service

Retirement

Mandatory retirement at age 65 with 25 years of service (a municipality may retain the Chief of Police until age 70). Voluntary retirement after 25 years of service for an active member and after age 60 with 25 years of service for an employee member. Benefit is life annuity equal to 60% of final compensation, plus 1% of final compensation for years of service in excess of 25.

Death

Benefit

While on duty:

Immediate life annuity equal to 70% of average salary payable to the spouse. If there is no spouse or if the spouse dies or remarries, 20% of final compensation will be payable to one surviving child and 35% (50%) of final compensation will be payable, to two (three) surviving children. If there is no surviving spouse or child, 25% (40%) of final compensation will be payable to one (two) surviving dependent parent(s). The minimum spousal annuity is \$4,500 per annum.

While not on duty after retirement:

Life annuity equal to 50% of the member's average salary payable to the spouse, plus 15% (25%) to one (two or more) surviving child (children). If there is no surviving spouse or if the surviving spouse dies or remarries, 20% (35%, 50%) of the member's average salary to one (two, three or more) surviving child (children). In the event that there is no surviving spouse or child, 25% (40%) of the member's average salary will be payable to one (two) dependent parent(s). The minimum spousal annuity is \$4,500 per annum.

Ordinary

Disability

Retirement

Totally and permanently incapacitated from service for any cause other than as a direct result of a traumatic event occurring during the performance of duty. Benefit is an immediate life annuity equal to 1/2 of average salary.

Accidental

Disability

Retirement

Totally and permanently incapacitated as a direct result of a traumatic event occurring while performing regular or assigned duties. Benefit is an immediate life annuity equal to 2/3 of average salary.

3. Contributions

Each member contributes 7% of his salary to the pension fund.

APPENDIX B

OUTLINE OF ACTUARIAL ASSUMPTIONS AND METHODS

VALUATION INTEREST RATE: 8.75% per annum, compounded annually for development of costs.

DEATHS AFTER RETIREMENT: Rates vary by age. Representative values of the assumed orders of mortality are as follows:

Age	Lives Per 1,000		
	Service Pensioners	Disability Pensioners	Widows
50	6.2	12.8	2.2
55	9.9	17.4	3.3
60	15.6	24.5	5.5
65	23.9	35.7	9.6
70	30.3	53.2	16.5
75	49.1	80.2	32.4
80	81.5	121.1	56.1
85	126.3	182.0	89.2

MARRIAGE: Males are assumed to be 4 years older than females, no assumption was made as to children.

For those participants with listed beneficiaries, the beneficiary allowance was assumed to be the greater of twice the amount contained in the record or the minimum of \$4,500/yr. (The information contained in the record has not been updated for the change from 25% to 50% payment to the survivor.)

For those participants without listed beneficiaries, 65% were assumed to be married and the beneficiary amount was assumed to be the minimum benefit payable (\$4,500/yr.).

Actuarial Method: The unfunded accrued liability was measured as of June 30, 1990 and the accrued liability contribution rate was then determined such that the unfunded accrued liability was to be amortized over a period of 9 years with contributions expected to remain constant.

In determining the unfunded accrued liability and the contribution rate, the actuarial value of assets as of June 30, 1990 was based upon 100% of the market value of system assets. For subsequent actuarial valuations, the actuarial value of assets is adjusted to reflect actual contributions and benefit payments, an assumed rate of return on the previous years' assets and current years' cash flow at an annual rate of 8.75% with an adjustment to reflect 20% of the difference between the resulting value and the actual market value of System assets.

In developing the unfunded accrued liability contribution rate as of June 30, 1991 and subsequent years, the contribution rate is adjusted to amortize any gains or losses over the remainder of the 9-year period. (Without additional guidance, we have assumed that the unfunded accrued liability determined as of June 30, 2002 will be amortized over 1 year.)

APPENDIX C

TABULATIONS USED AS A BASIS FOR THE 2002 VALUATION

The following tables give the number and retirement allowances of beneficiaries classified by age as of July 1, 2002

TABLE 1

**THE NUMBER AND ANNUAL RETIREMENT
ALLOWANCES OF RETIRED MEMBERS DISTRIBUTED
BY AGE AS OF JULY 1, 2002**

SERVICE RETIREMENTS

AGE	MEN		WOMEN	
	NUMBER	AMOUNT	NUMBER	AMOUNT
80	1	\$ 44,740		
82	2	57,085		
83	3	61,289		
84	12	157,052		
85	27	394,661		
86	16	175,543		
87	29	377,476		
88	25	300,071		
89	14	126,438	1	\$ 8,527
90	17	185,079		
91	18	180,007		
92	13	88,921		
93	12	101,149		
94	7	57,888		
95	5	35,531		
96	5	30,998		
97	3	31,442		
98	2	14,133		
99	1	3,356		
100	2	9,646		
TOTAL	214	\$ 2,432,507	1	\$ 8,527

TABLE 2

**THE NUMBER AND ANNUAL RETIREMENT
ALLOWANCES OF RETIRED MEMBERS DISTRIBUTED
BY AGE AS OF JULY 1, 2002**

ORDINARY DISABILITY RETIREMENTS

AGE	MEN		WOMEN	
	NUMBER	AMOUNT	NUMBER	AMOUNT
81	1	\$ 3,212		
82	1	3,065		
84	1	2,892		
86	1	5,377		
88	1	5,852		
89	1	3,592		
90	2	5,638		
91	1	5,816		
92	1	3,113		
94	2	5,346		
TOTAL	12	\$ 43,902		

TABLE 3

**THE NUMBER AND ANNUAL RETIREMENT
ALLOWANCES OF RETIRED MEMBERS DISTRIBUTED
BY AGE AS OF JULY 1, 2002**

ACCIDENTAL DISABILITY RETIREMENTS

AGE	MEN		WOMEN	
	NUMBER	AMOUNT	NUMBER	AMOUNT
85	1	\$ 4,897		
86	1	5,950		
87	2	15,717		
88	1	5,620		
90	1	6,596		
TOTAL	6	\$ 38,780		

TABLE 4

**THE NUMBER AND ANNUAL RETIREMENT
ALLOWANCES OF BENEFICIARIES DISTRIBUTED
BY AGE AS OF JULY 1, 2002**

ACTIVE MEMBERS' DEATH BENEFITS

AGE	MEN		WOMEN	
	NUMBER	AMOUNT	NUMBER	AMOUNT
51			1	\$ 778
57			1	1,800
58	1	\$ 1,800		
60			1	2,215
65			1	4,500
66			1	705
74			2	9,000
75			1	700
76			2	4,845
77			2	15,163
78			2	9,000
79			3	13,500
80			4	18,000
81			7	46,575
82			3	13,500
83			7	39,909
84			12	63,836
85			13	73,344
86			8	42,288
87	1	4,500	24	124,371
88			13	64,718
89			10	57,662
90			14	63,867
91			14	66,291
92			16	76,813
93			9	42,885
94			10	48,595
95			8	47,145
96			11	51,582
97			8	36,000
98			3	13,500
99			7	31,500
100			2	9,000
101			1	4,500
102			1	4,500
103			1	4,500
104			1	4,500
TOTAL	2	\$ 6,300	224	\$ 1,111,587

TABLE 5

**THE NUMBER AND ANNUAL RETIREMENT
ALLOWANCES OF BENEFICIARIES DISTRIBUTED
BY AGE AS OF JULY 1, 2002**

RETIRED MEMBERS' DEATH BENEFITS

AGE	MEN		WOMEN	
	NUMBER	AMOUNT	NUMBER	AMOUNT
42			1	\$ 3,168
48	1	\$ 3,575		
49			1	2,070
54	1	1,670		
55			1	4,500
58			1	1,686
59	1	5,137	2	3,515
62			2	5,412
63			2	1,859
64	1	1,350	1	4,500
66			4	18,000
67	1	450	3	10,295
69			1	4,500
70			3	13,500
71			4	24,316
72			5	25,653
73	1	1,923	5	40,855
74			5	35,182
75			6	54,670
76			7	59,498
77			8	66,570
78			10	74,353
79			12	98,669
80			23	136,249
81			19	143,025
82			34	232,572
83			36	261,716
84			37	250,530
85			61	431,316
86			55	362,895
87			61	361,446
88			53	325,872
89			53	297,735
90			42	232,730
91			49	270,487
92			31	160,782
93			25	139,019
94			17	84,891
95			18	89,037
96	1	4,500	8	43,915
97			15	69,123
98			2	9,000
99			8	36,000
102			1	4,500
TOTAL	7	\$ 18,605	732	\$ 4,495,613