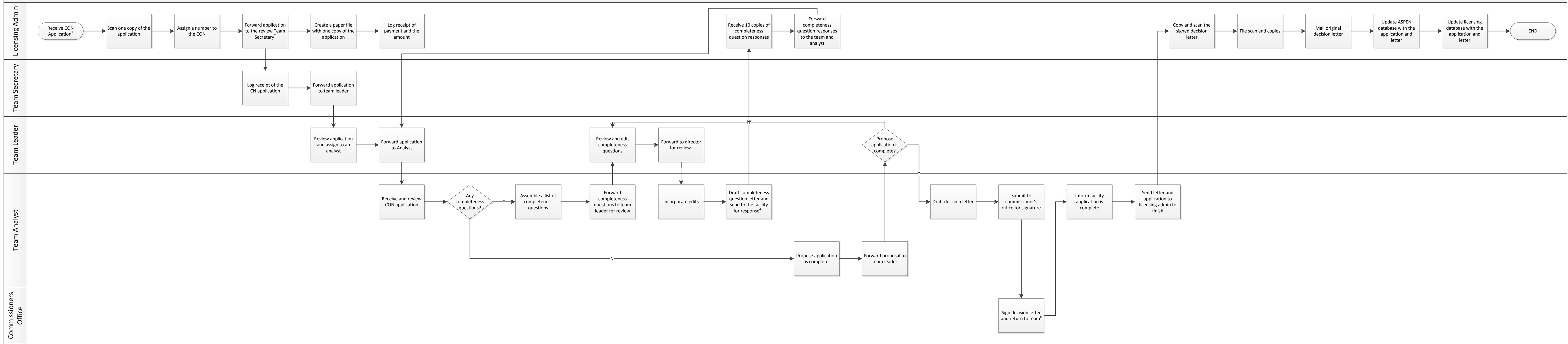


- Comments:**
- 35 copies are sent to Licensing, and should include a check for payment of fees
 - 34 copies can be sent out to the teams and other reviewers
 - Other state agencies may need to review the CON and can do so concurrently with the analyst review
 - Other agencies may or may not have completeness questions to add
 - Completeness questions letters are reviewed by the team, program director, assistant commissioner, to deputy commissioner
 - Completeness questions letter is sent out and may result in 2-3 cycles with the facility before completion
 - Board receives at least 10 copies.
 - Response letter could be approval or rejection of the CON



Comments:

1. 10 copies are sent to Licensing, and should include a check for payment of fees
2. 9 copies can be sent out to the teams and other reviewers
3. Review process only needs to go from team analyst, team leader, and director
4. Completeness questions letter is sent out and may result in 2-3 cycles with the facility before completion. Cycles are significantly shorter than a full review.
5. Completeness questions letters are reviewed by the team, program director. Does not need to go to the commissioner's office unless the application is 'controversial'. Team can often decide, but commissioner's office may make the final determination if it's controversial. If it is, then it should go through the full review process.
6. Approval letter is reviewed similar to note 3 with the addition of assistant commissioner and deputy commissioner.