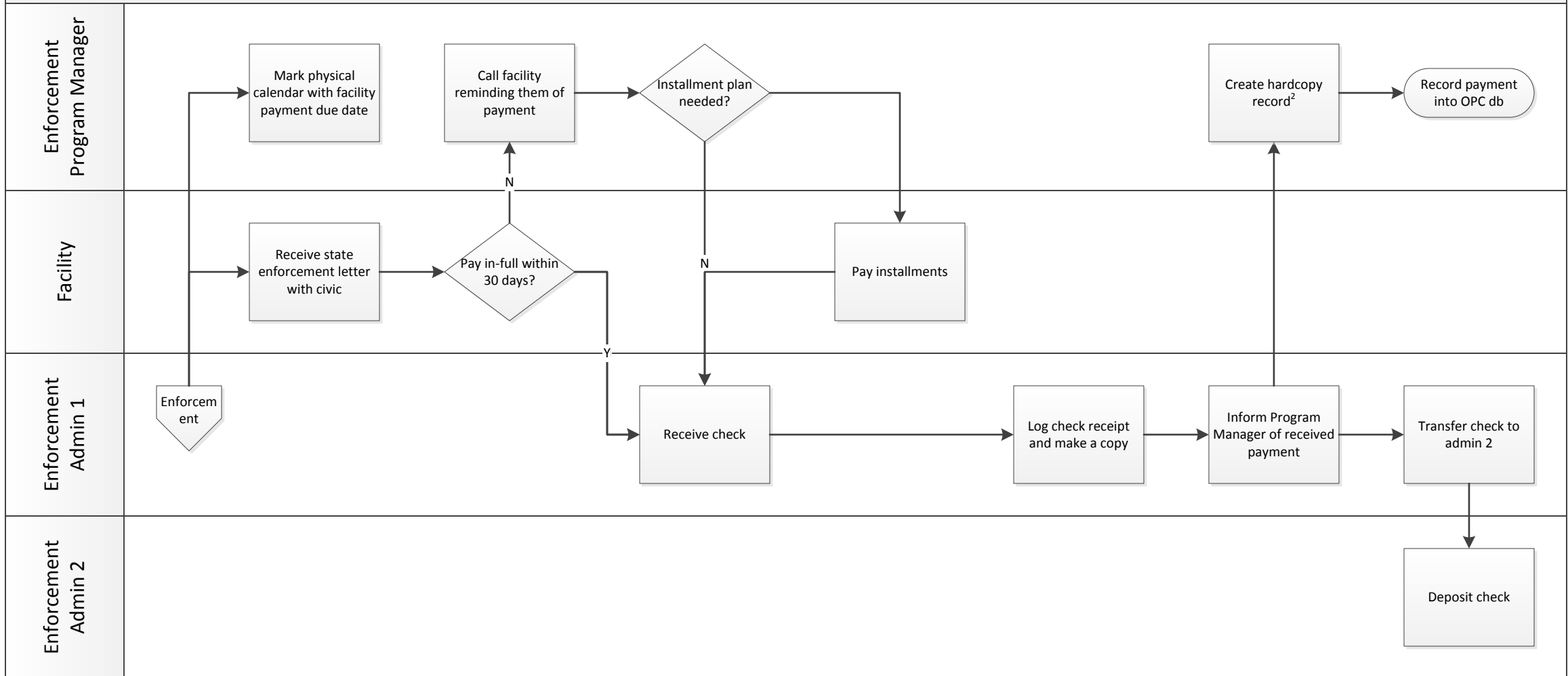
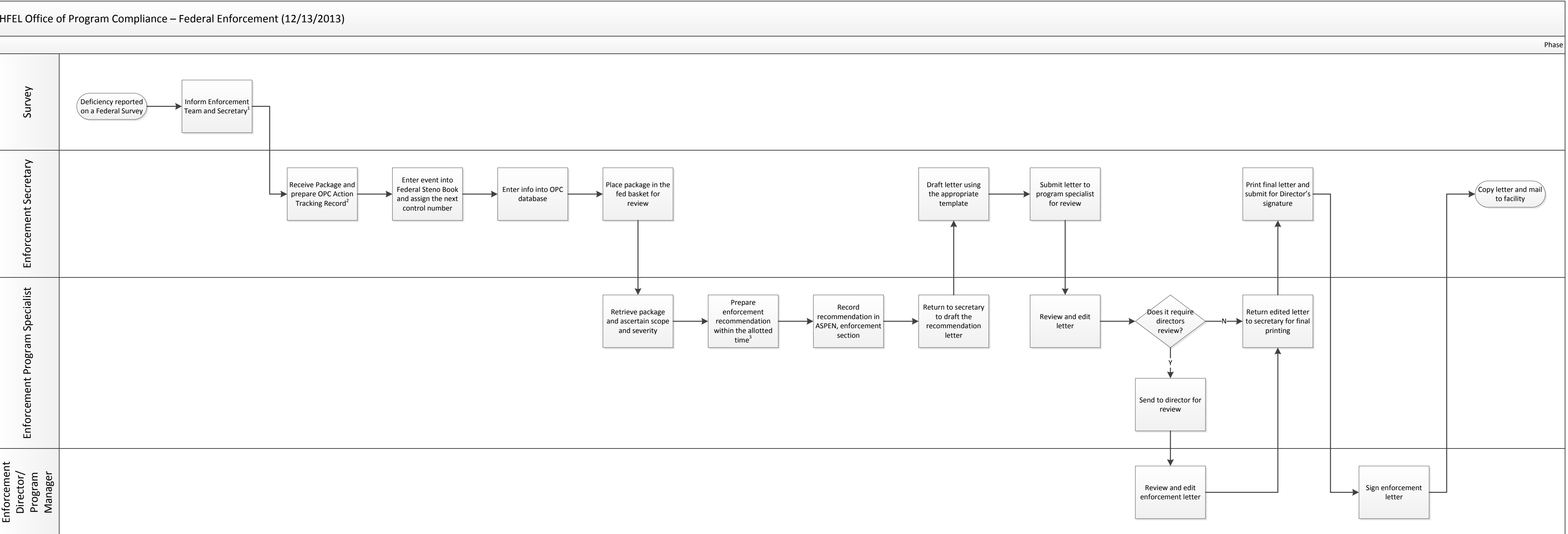


- Comments:
1. Acute sends a paper packet. Long term care will either fax, send the survey as an attachment, or notify that a survey with deficiencies was entered into ASPEN
 2. If IJ, may printout for ease of use. If less complex, may review solely on ASPEN.
 3. Survey information, deficiencies, date, control number
 4. Enter penalties and remedies and the date into the OPC database



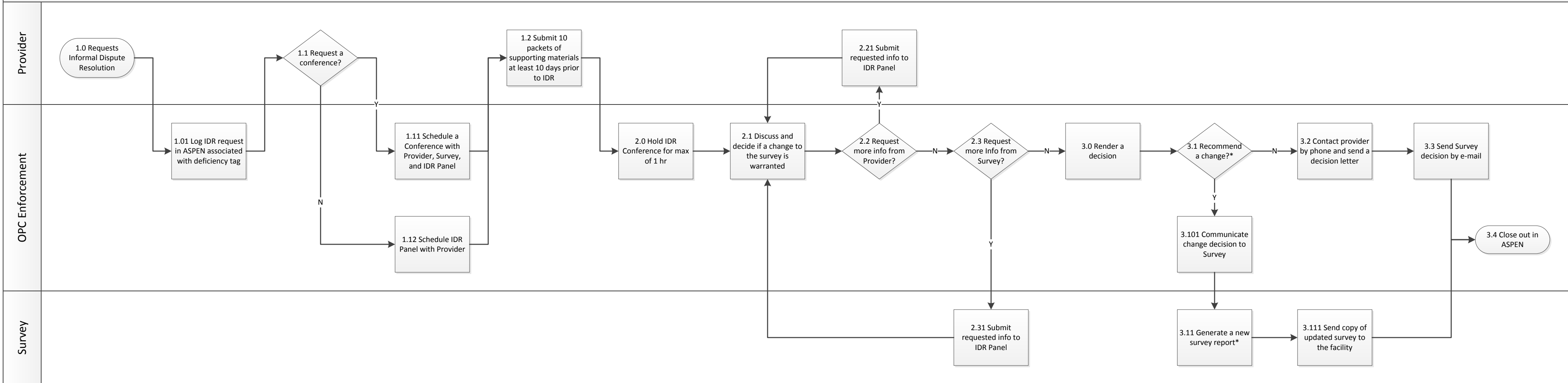
Comments:

- 1.
2. Hardcopy file includes enforcement letter, copy of the check, amount paid, check #. Filed by facility and can also include information about installment payments



Comments:

1. Survey may inform enforcement by fax or e-mail. When fax, OPC tracking form is often sent. When e-mail, OPC tracking form may be attached, or it may inform enforcement that an OPC tracking form is available in ASPEN.
2. Preparation of the OPC Tracking Record involves – writing the date received on the OPC TRACKING FORM; entering the control number, facility name, and admin onto the VARIABLE SHEET; Reviewing and pulling the facility history from the OPC and ASPEN databases.
3. Federal standards for turnaround: 2 days for immediate jeopardy, 10 days for potential harm, 120 days for medium. Enforcement recommendation according to the grid, however CMS is developing a new CMP formula.



Comments:

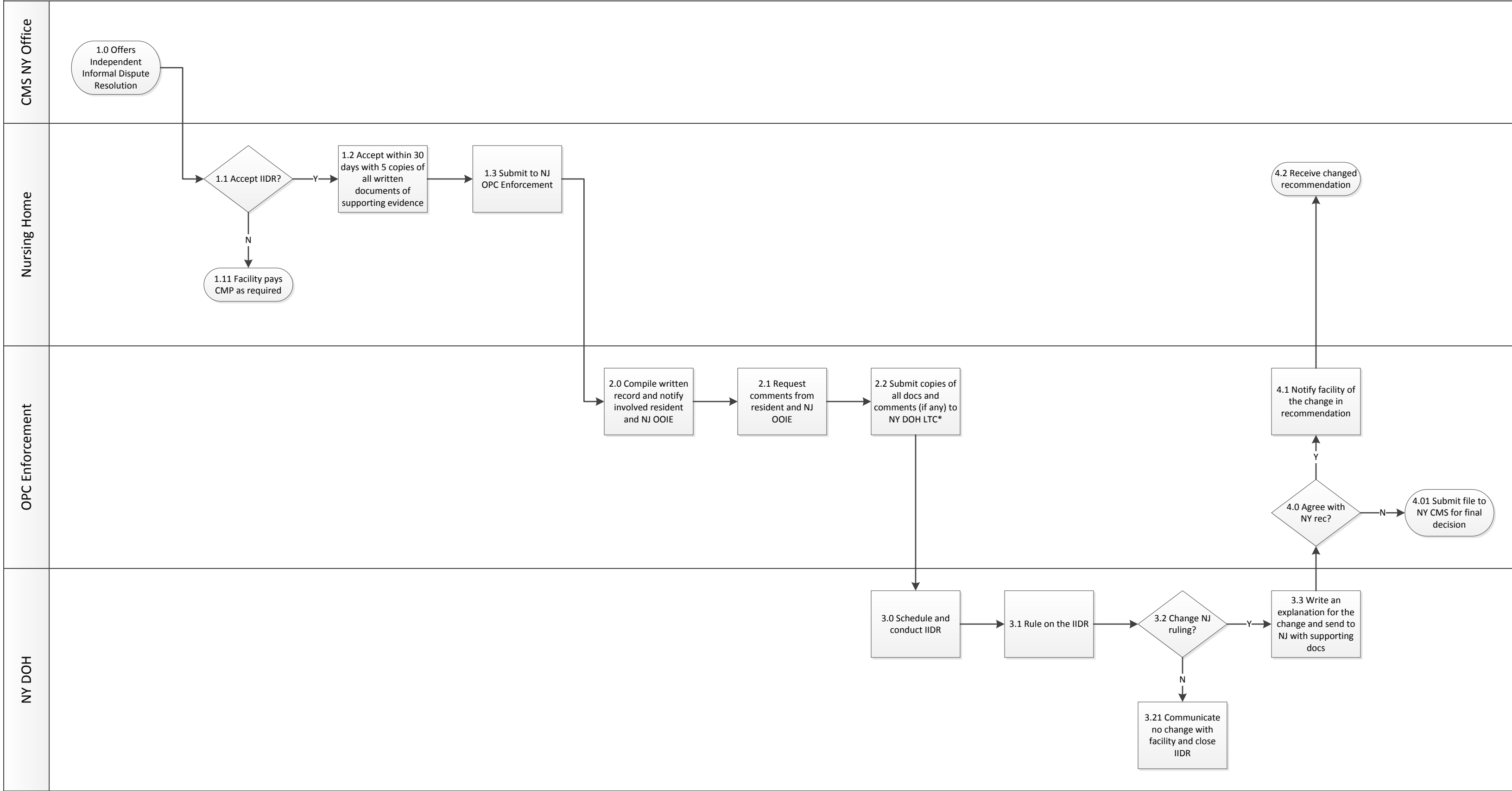
*For a nursing home challenge, the Panels decision is a recommendation to CMS. CMS has final authority to accept or reject the changes.

New items:

1.01 – Requests for IDR are logged into the IDR tab in ASPEN. They may be entered by OPC or Survey

3.101 – Communicate change recommendation to survey: May be in person if it’s an in-person IDR, or may be by phone.

3.111 – communicate new survey to the facility – **does this happen?**



Comments:
 “Offered to nursing homes for deficiencies of scope and severity constituting actual harm, substandard quality of care, or immediate jeopardy to resident health or safety, that lead to the imposition of a civil monetary penalty (CMP) and for which notices has been provided by CMS to the nursing home that the CMP will be collected and place in escrow.”

- *New York State Department of Health Office of Long Term Care, Bureau of Quality Assurance and Surveillance
- OOIE – NJ Ombudsman for
- 1.1 – Requests are sent electronically through e-mail (HICS)
- 2.1 – OOIE responds to requests for more information with word documents
- 2.2 – packet is send to NY DOH as one large PDF file
- 3.3 – sent as an e-mail via HICS