

F5

Local Municipal Purpose Revenues and State Aid

N.J. Department of Community Affairs, Div. LGS 1998 – 2017

Updated for 2018 LTEM with 2017 data

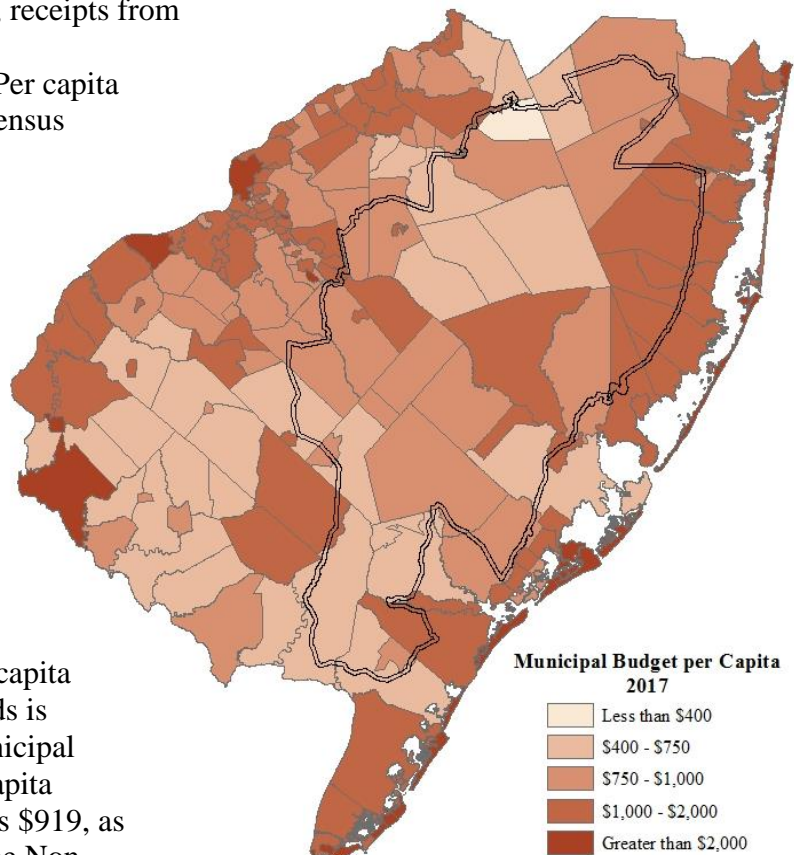
Highlight

Per capita municipal budgets in the Pinelands dropped 0.8% in 2017 to \$919. In the Non-Pinelands region, per capita budgets decreased to \$1,486, representing 0.7% less than in 2016. State aid increased in both regions. It was up \$3 per capita for the average municipality in the Pinelands and \$36 per capita on average in the Non-Pinelands region. The trend for lower state aid per capita in Pinelands municipalities continues.

Description: Per capita revenues provide an insight into the level or amount of service a municipality can provide. Money budgeted for local municipal purposes is used for maintaining all services within a municipality other than schools or infrastructure maintained by the county or state (such as roads). Local municipal purpose monies are raised largely through property taxes. Miscellaneous revenues have been added to local purpose monies and include surplus revenues apportioned, receipts from delinquent taxes and liens, and other miscellaneous revenues anticipated. Per capita rates were calculated by using inter-census estimates and census counts, when available.

Unit of Analysis: Municipal level data are regionally aggregated to allow for inside/outside the Pinelands analysis. Aggregates are sums, not averages. Unless otherwise noted, all dollar amounts have been adjusted to 2017 dollars.

Findings: As in all previous years of the Long Term Economic monitoring program, the average per capita municipal budget in the Non-Pinelands is greater than that of the Pinelands municipal average. For 2017, the average per capita municipal budget in the Pinelands was \$919, as compared with \$1,486 per capita in the Non-Pinelands municipalities. Since 2007, per capita



budgets decreased by 4.5% on average in the Pinelands region and increased by 3.9% in the non-Pinelands region.

Table 1. Municipal Budgets and State Aid

	Population Estimate	Total Municipal Budget	Municipal Budget per Capita	State Aid	State Aid per Capita
Pinelands in 2007	683,974	\$657,970,456	\$962	\$134,545,496	\$197
Pinelands in 2017	702,492	\$645,380,714	\$919	\$87,605,738	\$125
Change	3%	-2%	-4%	-35%	-37%
Non-Pinelands in 2007	1,716,916	\$2,457,218,326	\$1,431	\$454,327,366	\$265
Non-Pinelands in 2017	1,724,970	\$2,563,765,181	\$1,486	\$373,555,747	\$217
Change	<1%	4%	4%	-18%	-18%

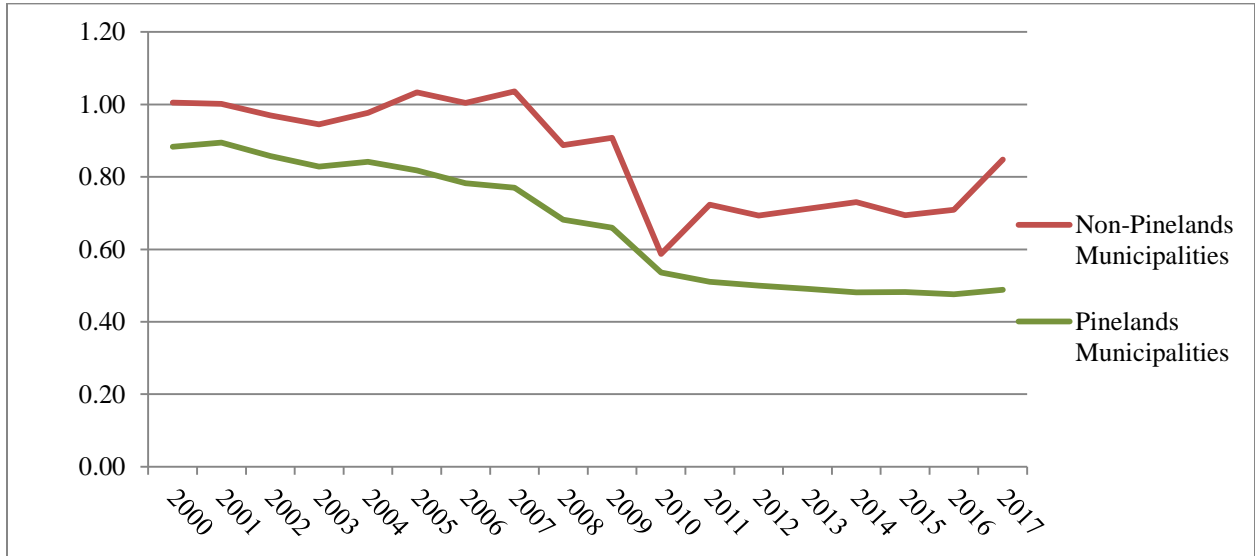
Since the year 2000, average per capita municipal budgets inside the Pinelands region ranged from a low of \$840 in 2000 up to a high of \$970 in 2009. For that same time period, the Non-Pinelands average per capita municipal budget ranged from a low of \$1,240 in 2001 up to a high of \$1,497 in 2016. See Table 2 below.

A look at trends in state aid finds a slight rebound in 2017 over the state aid budgets in 2016. However, state aid remains significantly lower than it was in the year 2000. Inside the Pinelands, state aid per capita for the average municipality came to \$125, up from \$122 per capita in 2016. However, the 2017 figure is 44% less than the per capita state aid offered in the year 2000. In the average Non-Pinelands municipality, state aid rose from \$181 in 2016 up to \$217 in 2017. The Non-Pinelands average per capita state aid decreased by 12% compared to the year 2000.

The Long Term Economic Monitoring report does not research correlated data that might contribute to the differences between per capita budgets and state aid inside versus outside the Pinelands. However, levels of municipal services and poverty in certain jurisdictions of the Non-Pinelands region may have a significant impact on the averages.

The graphs below relate to average per capita state aid. Graph 1 shows average per capita state aid to municipalities in the Pinelands and Non-Pinelands regions indexed to the average for all of southern New Jersey in 1999. The graph uses an estimated per capita aid for all southern New Jersey municipalities of \$244 (adjusted to 2016 dollars) in 1999 and compares average aid in the Pinelands and Non-Pinelands municipalities to the aid in that initial year. Graph 2 shows trends in actual average aid adjusted to 2017 dollars. Further information for the Pinelands and non-Pinelands regional average budgets and aid can be seen in Table 2 below.

Graph 1. Index of per Capita State Aid (indexed to average in 1999 for all of southern New Jersey)



Graph 2. State Aid per Capita

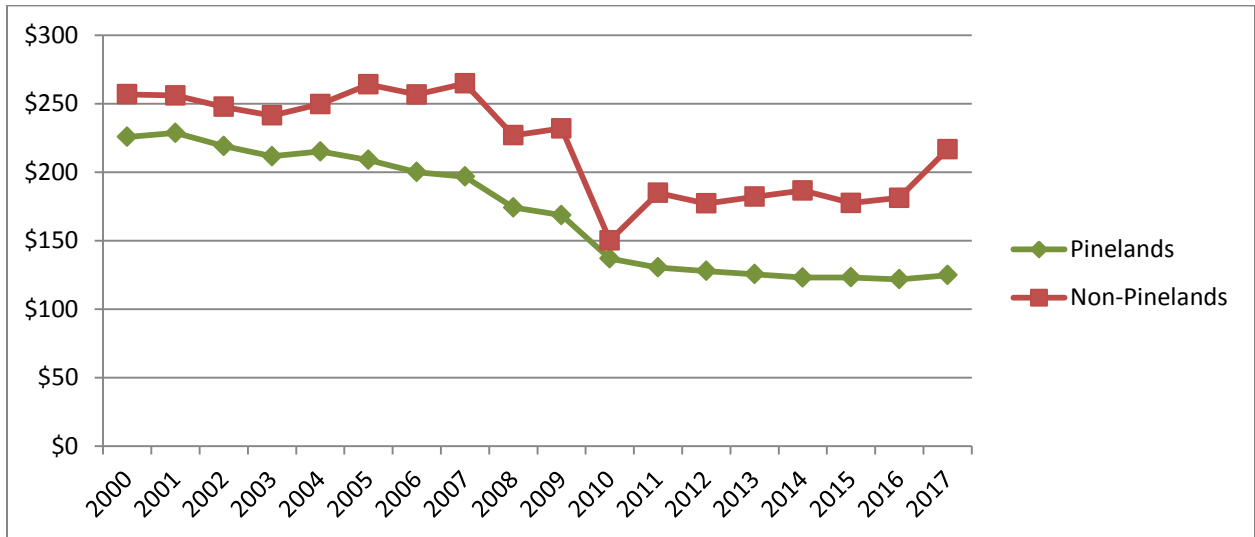


Table 2. Local Municipal Purpose Revenues and State Aid**Pinelands**

Year	Population Estimate	Local Municipal Purpose Revenue	Miscellaneous Revenues	Total Municipal Budget	Municipal Budget per Capita	Total State Aid	State Aid per Capita
2000	618,063	\$200,274,132	\$319,146,704	\$519,420,836	\$840	\$139,484,056	\$226
2001	630,581	\$215,779,229	\$326,886,254	\$542,665,484	\$861	\$144,165,934	\$229
2002	643,688	\$224,516,838	\$330,371,878	\$554,888,716	\$862	\$140,956,271	\$219
2003	655,268	\$239,898,769	\$326,438,985	\$566,337,754	\$864	\$138,622,960	\$212
2004	664,840	\$255,770,638	\$327,247,560	\$583,018,199	\$877	\$142,939,167	\$215
2005	671,991	\$270,657,835	\$341,507,304	\$612,165,139	\$911	\$140,336,806	\$209
2006	678,998	\$292,003,652	\$345,323,461	\$637,327,113	\$939	\$135,746,647	\$200
2007	683,974	\$311,217,624	\$346,752,832	\$657,970,456	\$962	\$134,545,496	\$197
2008	688,959	\$332,415,735	\$329,775,279	\$662,191,014	\$961	\$119,992,153	\$174
2009	693,936	\$354,207,426	\$319,211,100	\$673,418,526	\$970	\$116,967,353	\$169
2010	698,092	\$370,919,508	\$290,052,711	\$660,972,218	\$947	\$95,512,143	\$137
2011	701,018	\$377,174,818	\$259,564,374	\$636,739,192	\$908	\$91,355,107	\$130
2012	702,935	\$379,752,491	\$238,727,583	\$618,480,073	\$880	\$89,764,457	\$128
2013	704,310	\$389,316,427	\$246,417,871	\$635,734,297	\$903	\$88,300,254	\$125
2014	705,262	\$394,516,135	\$239,816,565	\$634,332,700	\$899	\$86,745,762	\$123
2015	703,865	\$400,582,444	\$246,081,857	\$646,664,301	\$919	\$86,642,919	\$123
2016	703,189	\$406,990,181	\$244,263,292	\$651,253,474	\$926	\$85,563,524	\$122
2017	702,492	\$406,413,673	\$238,967,041	\$645,380,714	\$919	\$87,605,738	\$125

Non-Pinelands

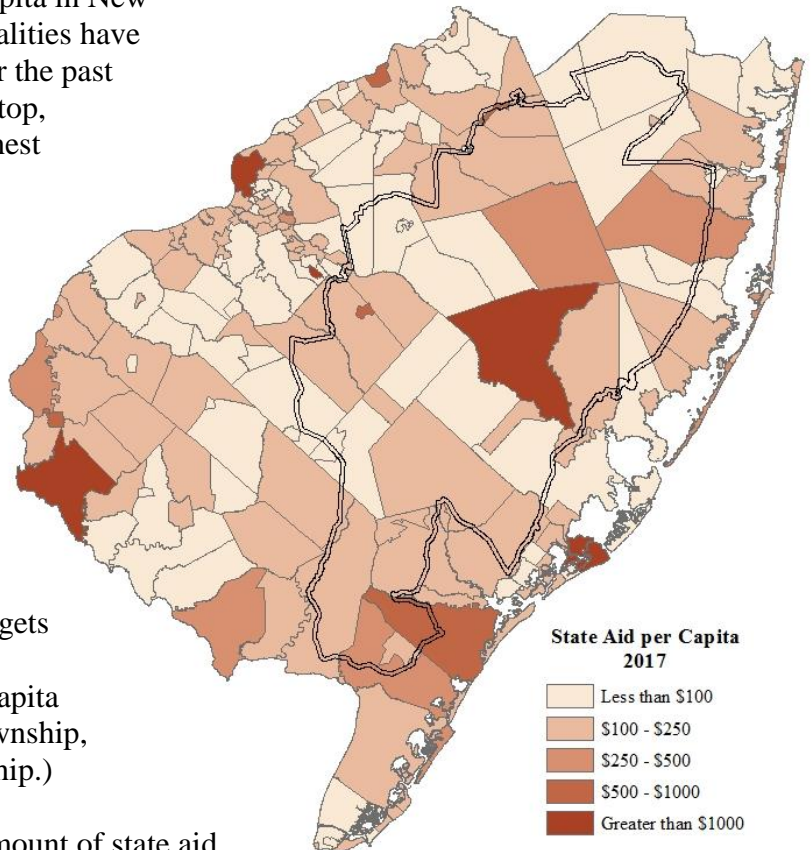
Year	Population Estimate	Local Municipal Purpose Revenue	Miscellaneous Revenues	Total Municipal Budget	Municipal Budget per Capita	Total State Aid	State Aid per Capita
2000	1,645,496	\$954,515,735	\$1,100,195,316	\$2,054,711,051	\$1,249	\$422,443,463	\$257
2001	1,655,892	\$951,890,088	\$1,101,516,178	\$2,053,406,266	\$1,240	\$423,749,947	\$256
2002	1,672,319	\$1,003,087,090	\$1,120,945,496	\$2,124,032,585	\$1,270	\$414,172,612	\$248
2003	1,686,044	\$1,047,891,160	\$1,117,394,525	\$2,165,285,685	\$1,284	\$406,914,288	\$241
2004	1,697,698	\$1,093,295,405	\$1,175,151,880	\$2,268,447,285	\$1,336	\$423,691,011	\$250
2005	1,705,381	\$1,159,763,596	\$1,223,087,002	\$2,382,850,599	\$1,397	\$450,085,737	\$264
2006	1,713,543	\$1,220,442,936	\$1,167,073,733	\$2,387,516,670	\$1,393	\$439,631,639	\$257
2007	1,716,916	\$1,269,149,113	\$1,188,069,213	\$2,457,218,326	\$1,431	\$454,327,366	\$265
2008	1,719,558	\$1,359,149,120	\$1,188,462,397	\$2,547,611,516	\$1,482	\$389,999,022	\$227
2009	1,721,609	\$1,449,241,328	\$1,105,792,742	\$2,555,034,070	\$1,484	\$399,118,370	\$232
2010	1,723,949	\$1,517,797,848	\$1,053,028,240	\$2,570,826,088	\$1,491	\$258,784,640	\$150
2011	1,726,247	\$1,496,901,800	\$1,003,178,076	\$2,500,079,876	\$1,448	\$318,866,385	\$185
2012	1,727,178	\$1,501,764,867	\$936,533,165	\$2,438,298,032	\$1,412	\$305,888,890	\$177
2013	1,725,583	\$1,505,728,620	\$975,770,041	\$2,481,498,661	\$1,438	\$313,928,062	\$182
2014	1,725,407	\$1,525,724,330	\$1,007,688,060	\$2,533,412,390	\$1,468	\$321,821,226	\$187
2015	1,724,062	\$1,483,037,580	\$1,083,507,494	\$2,566,545,074	\$1,489	\$305,895,848	\$177
2016	1,723,726	\$1,496,234,090	\$1,083,510,313	\$2,579,744,403	\$1,497	\$312,298,042	\$181
2017	1,724,970	\$1,429,268,182	\$1,134,496,999	\$2,563,765,181	\$1,486	\$373,555,747	\$217

Further data on municipal budgets and state aid for Pinelands municipalities is offered below. Stafford Township ranked highest in municipal budgets among Pinelands communities with a total budget of \$45,683,229. Berkeley Township was second at \$45,292,831 and Jackson Township was third with a budget of \$42,398,789. As was the case in 2016, these three are the only Pinelands municipalities to have a budget greater than \$40 million. About half (23) of the

Pinelands municipalities have budgets in excess of \$10 million. At the other end of the ranking, Wrightstown Borough had the lowest municipal budget (\$1,020,776). Woodland Township (\$1,084,144) and the City of Estell Manor (\$1,137,659) had the next lowest municipal budgets. For the first time, there were no municipalities in the Pinelands region with a budget under \$1 million.

Reviewed at the per capita scale, municipal budgets for Pinelands municipalities ranged from a high of \$1,997 per capita in Berlin Township to a low of \$220 per capita in New Hanover Township. These two municipalities have ranked the same in per capita budgets for the past two years. After Berlin Township at the top, Chesilhurst Borough has the second highest per capita budget among Pinelands municipalities (\$1,744.) Plumsted Township ranked second lowest with a budget of \$412 per capita.

There were fewer Pinelands municipalities that increased their per capita municipal budgets this year (21) than in 2016, when 27 had per capita budget increases. The average increase was \$27 from 2016 to 2017. Conversely, 26 Pinelands municipalities decreased their per capita municipal budgets by an average of \$52. There were three municipalities where the change in per capita budgets was \$1 or less (Buena Vista Township, Dennis Township, and Hamilton Township.)



Lacey Township received the greatest amount of state aid among the Pinelands municipalities at \$11,471,849. Upper Township, Winslow Township, and Egg Harbor Township received the next highest amounts (each about \$6.3 million) and are the only other Pinelands municipalities to exceed \$6 million in State aid. Port Republic City and Folsom Borough received the least amount of aid at \$180,281 and \$192,670, respectively.

In general, per capita state aid has declined by an average of 30% across southern New Jersey since 2005. However, per capita State aid grew an average of \$3 per capita in 2017 across Pinelands municipalities over 2016 values. Non-Pinelands municipalities received an average increase of \$35 per capita. At \$52 per person, Barnegat Township received the least state aid per capita. Washington Township saw the highest per capita state aid, receiving about \$1,111 per person. More details for Pinelands towns can be found in Table 3, below.

Table 3. Municipal Purpose Revenues and State Aid

Municipality	County	Population Estimate	Municipal Budget	Municipal Budget per Capita	Total State Aid	State Aid per Capita
Washington Township	Burlington	736	\$904,970	\$1,230	\$817,928	\$1,111
Wrightstown Borough	Burlington	708	\$1,020,776	\$1,442	\$415,465	\$587
Upper Township	Cape May	11,990	\$12,694,876	\$1,059	\$6,378,943	\$532
Chesilhurst Borough	Camden	1,647	\$2,872,288	\$1,744	\$841,407	\$511
Woodland Township	Burlington	1,510	\$1,084,144	\$718	\$636,740	\$422
Lacey Township	Ocean	28,444	\$30,545,307	\$1,074	\$11,471,849	\$403
Dennis Township	Cape May	6,298	\$4,612,536	\$732	\$1,674,841	\$266
Berlin Township	Camden	5,453	\$10,888,402	\$1,997	\$1,348,035	\$247
Bass River Township	Burlington	1,453	\$1,242,475	\$855	\$310,520	\$214
Estell Manor City	Atlantic	1,742	\$1,137,660	\$653	\$320,745	\$184
Port Republic City	Atlantic	1,056	\$1,220,743	\$1,156	\$180,281	\$171
Maurice River Township	Cumberland	6,958	\$3,891,289	\$559	\$1,131,016	\$163
Winslow Township	Camden	39,317	\$31,060,850	\$790	\$6,305,746	\$160
Egg Harbor Township	Atlantic	43,651	\$39,967,752	\$916	\$6,282,369	\$144
Eagleswood Township	Ocean	1,605	\$1,772,369	\$1,104	\$212,816	\$133
Waterford Township	Camden	10,749	\$11,003,325	\$1,024	\$1,370,400	\$127
Egg Harbor City	Atlantic	4,222	\$5,987,173	\$1,418	\$526,220	\$125
Woodbine Borough	Cape May	2,454	\$2,145,737	\$874	\$297,351	\$121
Lakehurst Borough	Ocean	2,687	\$4,098,616	\$1,525	\$323,643	\$120
New Hanover Township	Burlington	7,665	\$1,684,177	\$220	\$905,462	\$118
Monroe Township	Gloucester	36,779	\$36,474,040	\$992	\$4,261,144	\$116
Pemberton Township	Burlington	27,573	\$24,716,277	\$896	\$3,108,642	\$113
Hamilton Township	Atlantic	26,663	\$26,415,397	\$991	\$2,989,676	\$112
Southampton Township	Burlington	10,274	\$6,603,555	\$643	\$1,127,106	\$110
Berkeley Township	Ocean	41,676	\$45,292,831	\$1,087	\$4,544,098	\$109
Folsom Borough	Atlantic	1,804	\$1,424,435	\$790	\$192,670	\$107
Stafford Township	Ocean	27,012	\$45,683,229	\$1,691	\$2,809,603	\$104
Weymouth Township	Atlantic	2,772	\$1,332,652	\$481	\$285,740	\$103
Buena Borough	Atlantic	4,510	\$4,327,290	\$959	\$446,972	\$99
Buena Vista Township	Atlantic	7,488	\$4,638,774	\$619	\$729,712	\$97
Hammonton Town	Atlantic	14,557	\$13,095,577	\$900	\$1,386,558	\$95
Franklin Township	Gloucester	16,579	\$11,180,072	\$674	\$1,549,307	\$93
Tabernacle Township	Burlington	6,920	\$4,276,621	\$618	\$643,788	\$93
South Toms River Borough	Ocean	3,741	\$4,643,758	\$1,241	\$346,455	\$93
Medford Township	Burlington	23,353	\$20,464,503	\$876	\$2,158,673	\$92
Shamong Township	Burlington	6,470	\$2,866,376	\$443	\$592,065	\$92
Mullica Township	Atlantic	6,088	\$5,538,522	\$910	\$519,967	\$85
Manchester Township	Ocean	43,418	\$33,906,697	\$781	\$3,513,113	\$81
Medford Lakes Borough	Burlington	4,075	\$4,786,734	\$1,175	\$321,379	\$79
Little Egg Harbor Township	Ocean	20,695	\$21,122,619	\$1,021	\$1,557,725	\$75
Ocean Township	Ocean	8,838	\$11,239,536	\$1,272	\$662,513	\$75
Evesham Township	Burlington	45,489	\$36,470,977	\$802	\$3,385,524	\$74
Galloway Township	Atlantic	37,029	\$27,117,287	\$732	\$2,730,237	\$74
Jackson Township	Ocean	56,501	\$42,398,789	\$750	\$3,659,422	\$65
Beachwood Borough	Ocean	11,193	\$10,629,048	\$950	\$721,532	\$64
Plumsted Township	Ocean	8,509	\$3,503,280	\$412	\$469,160	\$55
Barneget Township	Ocean	22,141	\$25,396,373	\$1,147	\$1,141,180	\$52
<i>"Outside" Municipalities (less than 10% of total area in Pinelands boundary)</i>						
Corbin City	Atlantic	497	\$566,155	\$1,139	\$103,907	\$209
Springfield Township	Burlington	3,345	\$3,932,070	\$1,176	\$437,839	\$131
Vineland City	Cumberland	60,824	\$62,853,310	\$1,033	\$6,968,797	\$115
North Hanover Township	Burlington	7,634	\$3,394,760	\$445	\$784,363	\$103
Toms River Township	Ocean	91,415	\$124,574,289	\$1,363	\$9,218,198	\$101
Berlin Borough	Camden	7,612	\$7,893,640	\$1,037	\$750,666	\$99